

Classification	System and Application FAQ on WinCE PAC				No.	1-009-02	
Author	Tunglu-Yu	Version	1.0.0	Date	2010/2/12	Page	1/4

## How to change the display type for WP-8x3x

Applies to:

Platform	OS version	WinPAC/ViewPAC utility version
WP-8x3x	All versions	All versions
WP-8x4x	N/A	N/A
VP-25W1	N/A	N/A
VP-23W1	N/A	N/A

*N/A: Not applicable to this platform and OS.*

### Tips & Warnings

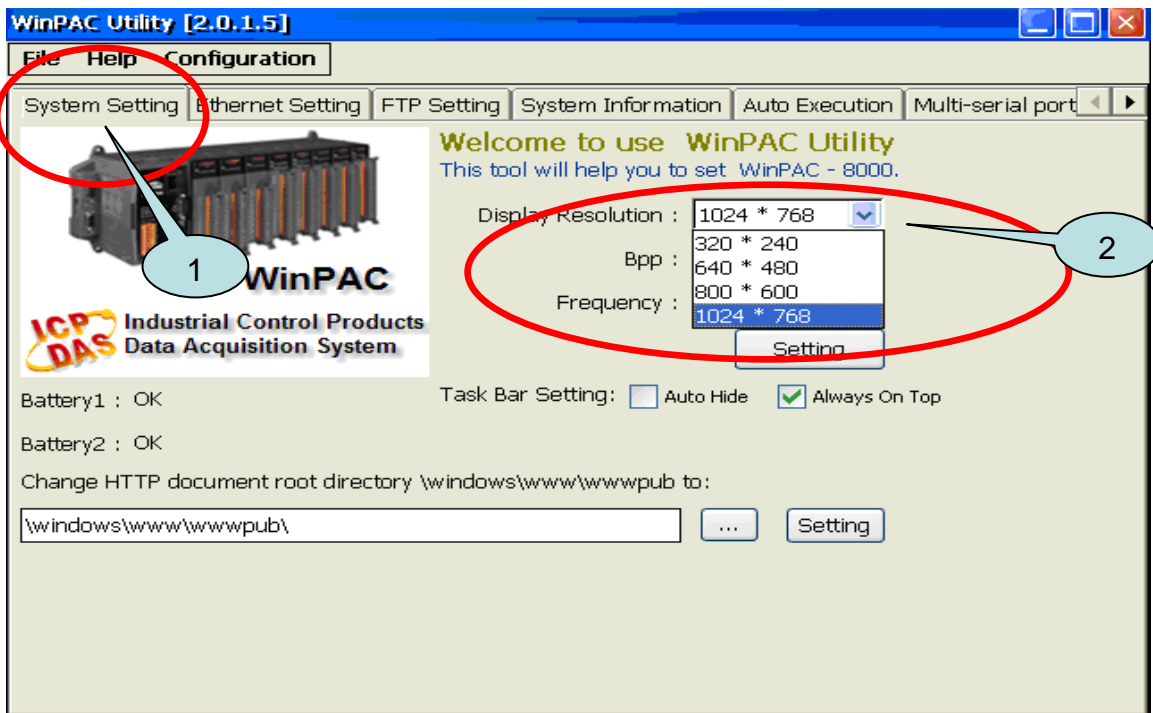


*If your monitor doesn't support the display mode that you set, the monitor may not display correctly.*

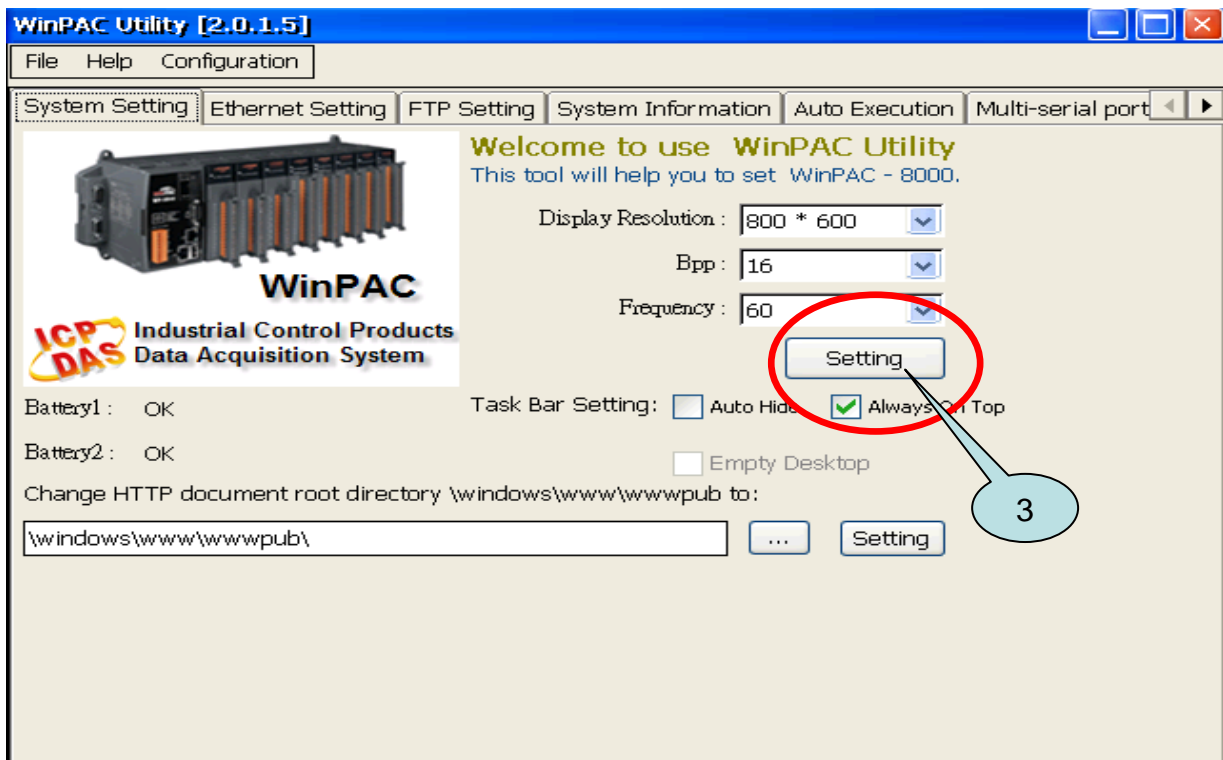
The default display resolution for WP-8x3x is "1024\*768". To change the display mode for WP-8x3x, perform the following steps:

**Step 1:** Change the display resolution.

Start the WinPAC Utility on the desktop, select the display resolution and click the setting button below the Frequency column.



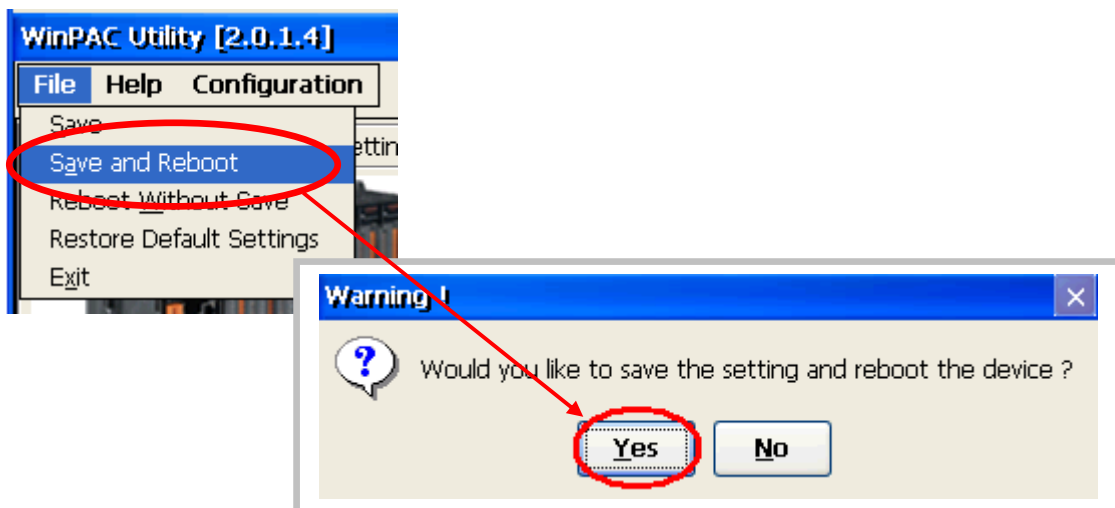
Classification	System and Application FAQ on WinCE PAC				No.	1-009-02	
Author	Tunglu-Yu	Version	1.0.0	Date	2010/2/12	Page	2/4



**Step 2: Save and Reboot your WinPAC.**

2.1. Click **“File”** → **“Save and Reboot”**.

2.2. Click the **“Yes”** button and wait for the device to reboot.



Classification	System and Application FAQ on WinCE PAC				No.	1-009-02	
Author	Tunglu-Yu	Version	1.0.0	Date	2010/2/12	Page	3/4

## Tips & Warnings

---



*If nothing displayed on your monitor while booting, the display settings selected on the WP-8x3x may not be supported by your monitor.*

*Please see the document "**W1-009-04**: How to change the display type for WP-8x3x when display out of range" for more details.*

---

Classification	System and Application FAQ on WinCE PAC				No.	1-009-02	
Author	Tunglu-Yu	Version	1.0.0	Date	2010/2/12	Page	4/4

## Revision History

Revision	Date	Description
1.0.0	2010/02/12	Initial release