

Classification	System and Application FAQ on WinCE PAC				No.	1-007-02	
Author	Tunglu-Yu	Version	1.0.1	Date	2013/08/06	Page	1/12

## How to label serial ports on i-8112/ i-8114/ i-8142/ i-8144 with MSAx/ MSBx

Applies to:

Platform	OS version	WinPAC/ViewPAC utility version
WP-8x3x	All versions	V2.0.1.5 and later
WP-8x4x	V1.4.1.0 and later	V2.0.1.5 and later
WP-5000	<b>N/A</b>	<b>N/A</b>
VP-23W1/ VP-25W1	V1.0.0.7 and later	V2.0.1.5 and later
VP-4131	All versions	All versions

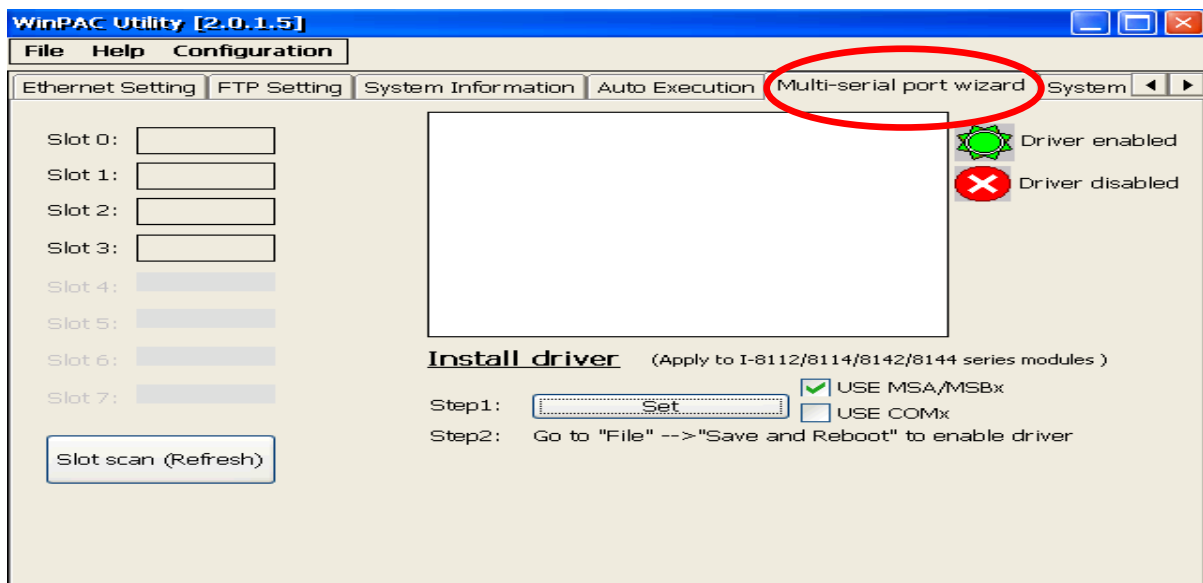
**N/A**: Not applicable to this platform and OS.

Serial communication modules are designed for use with intelligent devices such as bar code readers, serial printers, intelligent sensors, instrumentation equipment, computers, and almost any device providing the RS-232 or RS-422/485 serial communication.

### To set up a communication module

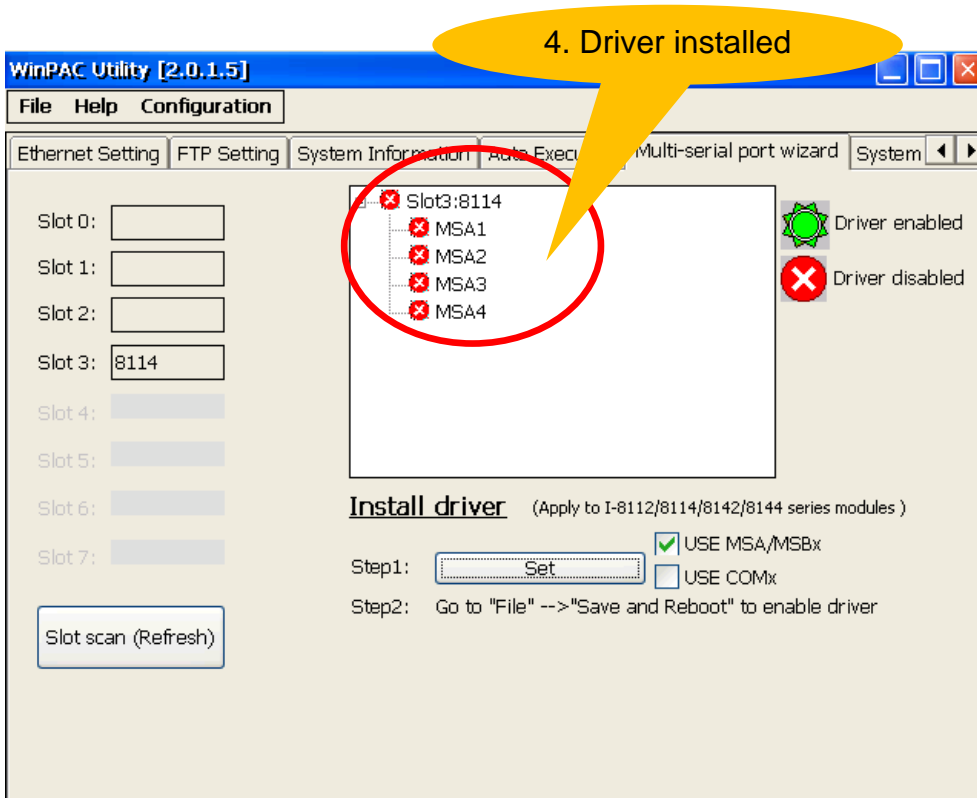
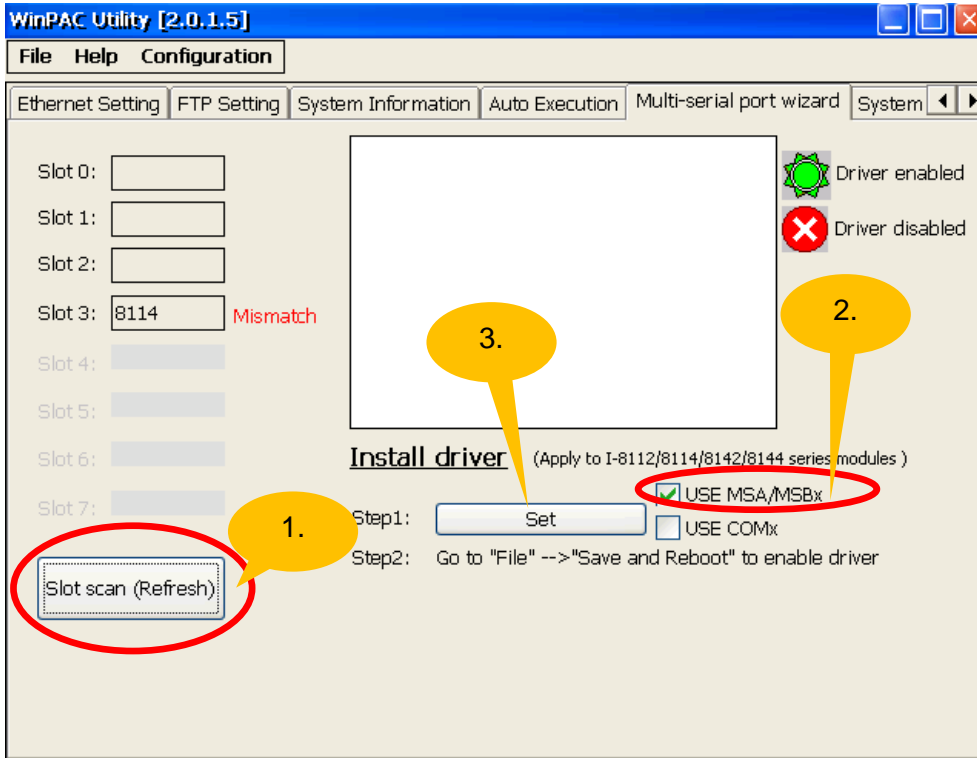
**Step 1:** Install the multi-serial port module driver.

- 1.1. Power off the WP-8000/ViewPAC
- 1.2. Insert the module into any slot
- 1.3. Power on the WP-8000/ViewPAC
- 1.4. Start the WinPAC/ViewPAC utility on the desktop, and then click the **“Multi-serial port wizard”** index page.



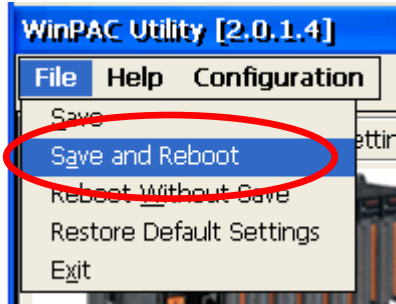
Classification	System and Application FAQ on WinCE PAC				No.	1-007-02	
Author	Tunglu-Yu	Version	1.0.1	Date	2013/08/06	Page	2/12

1.5. Press “**Slot scan (Refresh)**” button, check the USE MSA/MSBx checkbox and then press”**Set**” button to install driver.

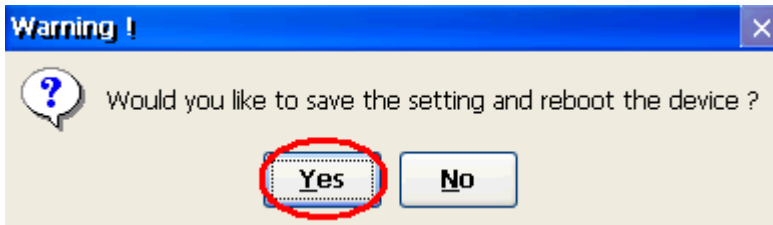


Classification	System and Application FAQ on WinCE PAC				No.	1-007-02	
Author	Tunglu-Yu	Version	1.0.1	Date	2013/08/06	Page	3/12

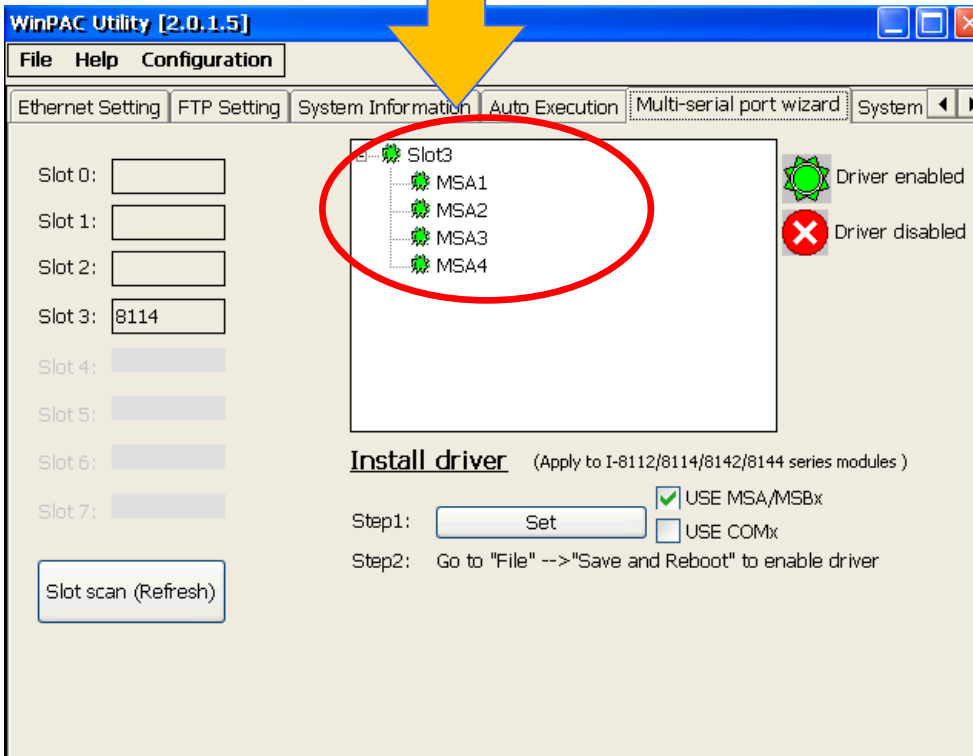
1.6. Click the “File” → “Save and Reboot” menu option.



1.7. Click the “Yes” button and wait for the device to reboot.



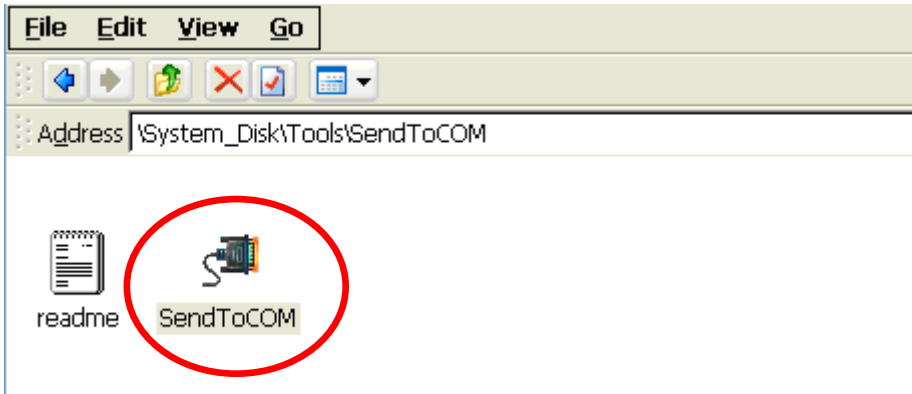
The driver is installed and enabled after rebooting.



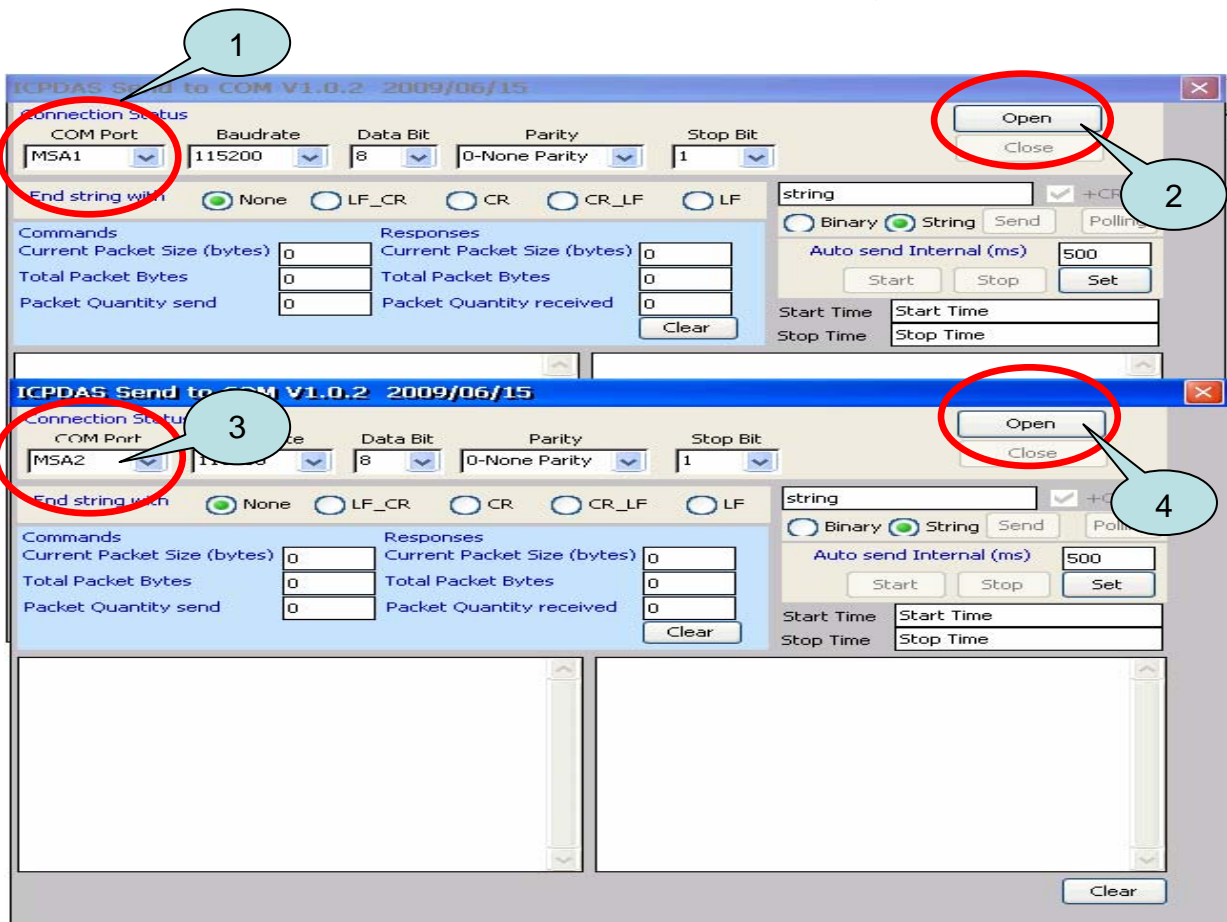
Classification	System and Application FAQ on WinCE PAC				No.	1-007-02	
Author	Tunglu-Yu	Version	1.0.1	Date	2013/08/06	Page	4/12

**Step 2:** Test the multi-serial port module(s).

2.1. Connect the two ports of I-8142 and execute the **SendToCOM.exe** file located in “**System\_Disk\Tools\SendToCOM**”.

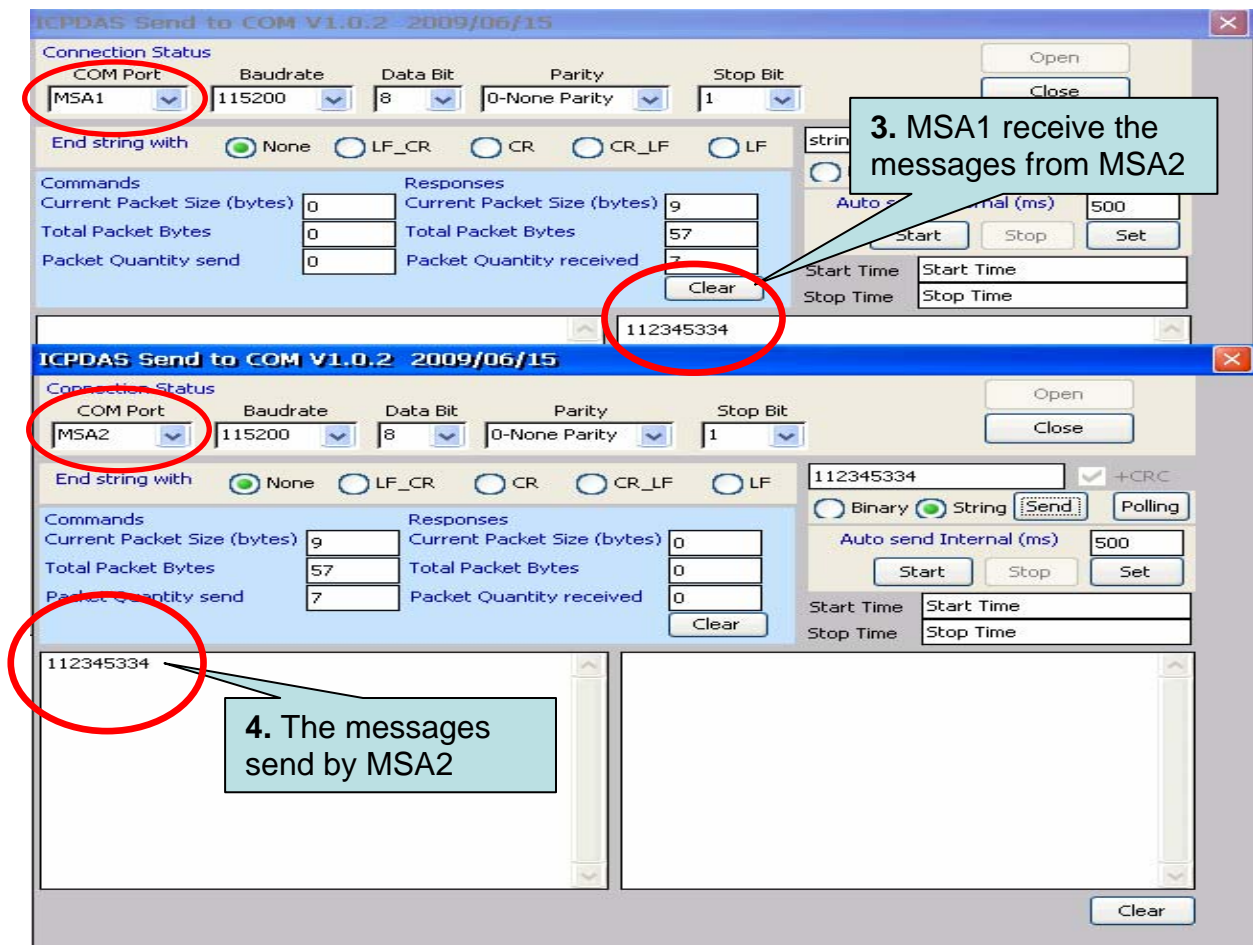
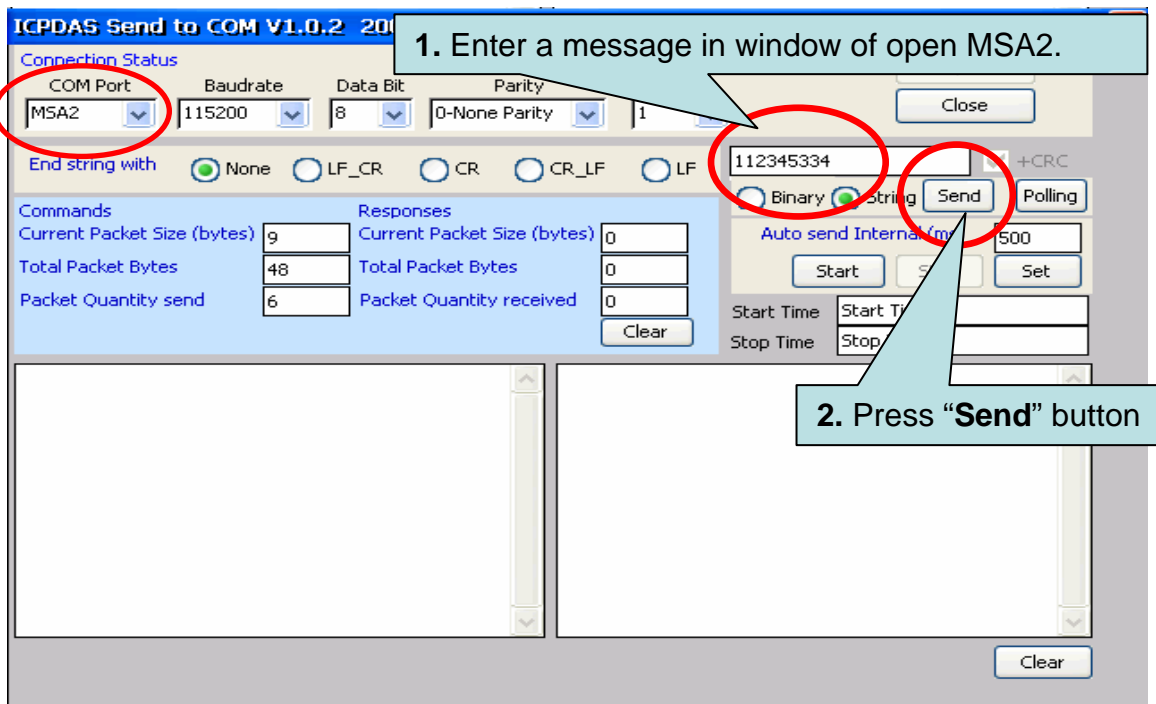


2.2. Execute the SendToCOM.exe files again, now two SendToCOM.exe are running; and then open COM Ports “**MSA1**” and “**MSA2**” (each corresponding to a real COM port).



Classification	System and Application FAQ on WinCE PAC				No.	1-007-02	
Author	Tunglu-Yu	Version	1.0.1	Date	2013/08/06	Page	5/12

### 2.3. Use MSA2 to send a message to MSA1 and check the result.



Classification	System and Application FAQ on WinCE PAC				No.	1-007-02	
Author	Tunglu-Yu	Version	1.0.1	Date	2013/08/06	Page	6/12

## How to get the name of COM Ports

### Overview

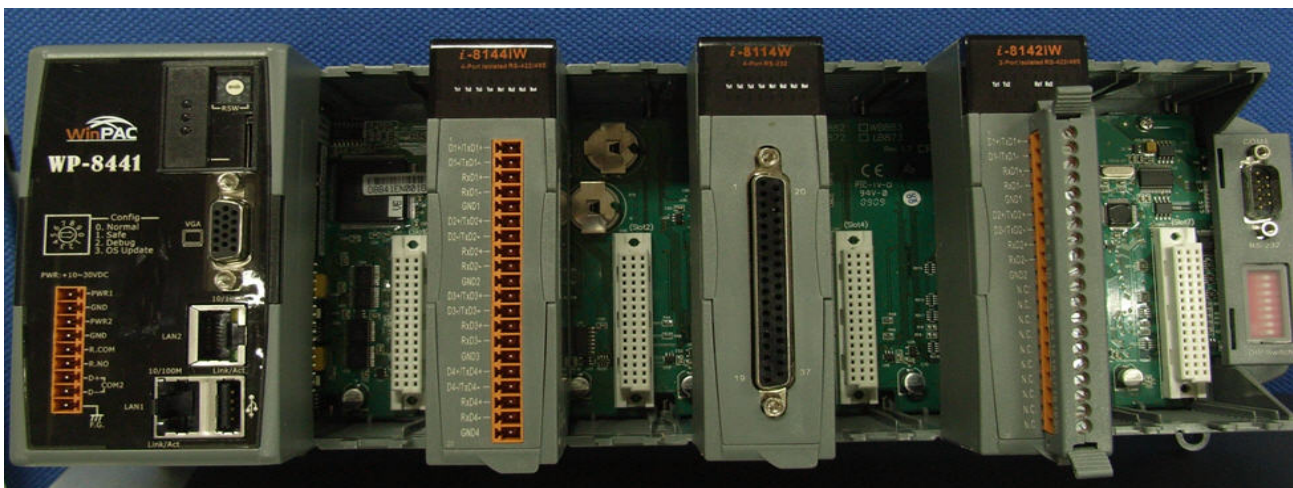
The maximum number of expanded COM port on communication modules supported is up to 16. The 16 COM ports will be named in order of **MSA1~MSA8** and then **MSB1~MSB8** since the driver installed.

To use the COM ports, you need assign the com port name as belows:

**VB.net:** Dim port As SerialPort = New SerialPort("MSA1")

**C#:** System.IO.Ports.SerialPort port = new System.IO.Ports.SerialPort("MSA1");

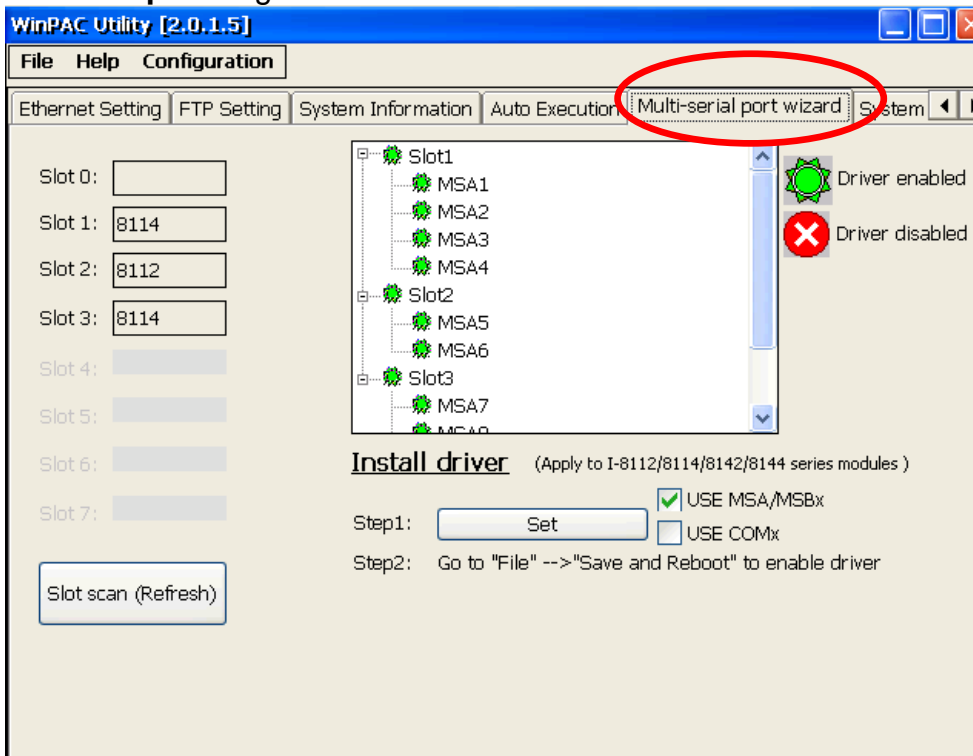
**EVC:** HANDLE hport=CreateFile(\_T("MSA1:"),.....);



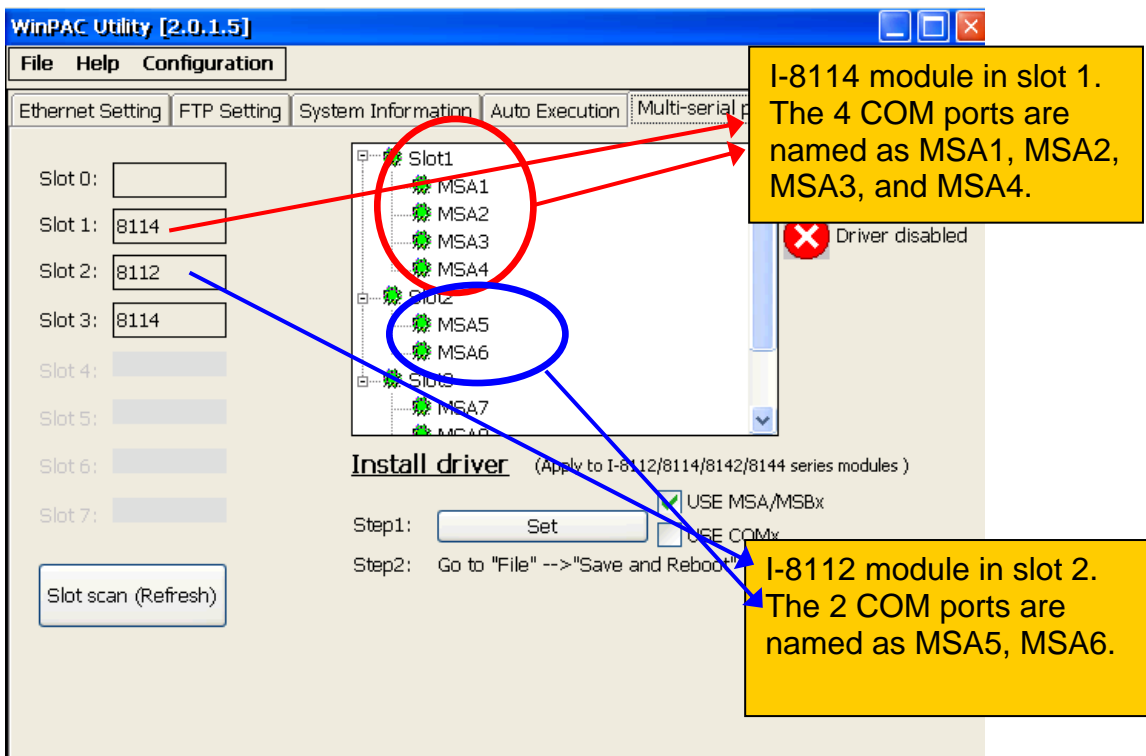
The following are the steps of getting the name of each COM Port:

Classification	System and Application FAQ on WinCE PAC				No.	1-007-02	
Author	Tunglu-Yu	Version	1.0.1	Date	2013/08/06	Page	7/12

**Step 1:** Start the WinPAC/ViewPAC Utility on the desktop, and then click the **“Multi-serial port”** tag.



The COM ports are grouped in the slot that the module plugged.



Classification	System and Application FAQ on WinCE PAC				No.	1-007-02	
Author	Tunglu-Yu	Version	1.0.1	Date	2013/08/06	Page	8/12

WinPAC Utility [2.0.1.5]

File Help Configuration

Ethernet Setting FTP Setting System Information Auto Execution Multi-serial port wizard System

Slot 0:

Slot 1:

Slot 2:

Slot 3:

Slot 4:

Slot 5:

Slot 6:

Slot 7:

Slot scan (Refresh)

MSA3  
MSA4  
Slot2  
MSA5  
MSA6  
Slot3  
MSA7  
MSA8  
MSB1  
MSB2

Driver enabled  
Driver disabled

**Install driver** (Apply to I-8112/8114/8142/8144 series modules)

Step1:   USE MSA/MSBx  USE COMx

Step2: Go to "File" --> "Save and Reboot" to enable driver

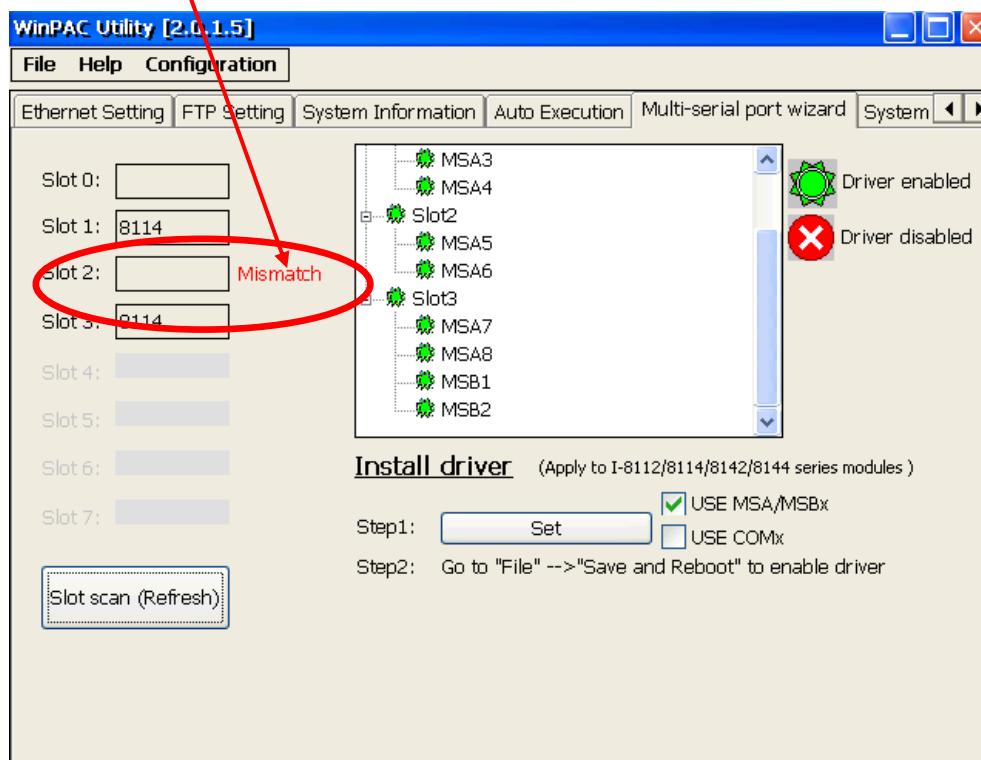
I-8114 module in slot 3.  
The 4 COM ports are named as MSA7,MSA8,MSB1, MSB2



Classification	System and Application FAQ on WinCE PAC				No.	1-007-02	
Author	Tunglu-Yu	Version	1.0.1	Date	2013/08/06	Page	9/12

## Troubleshooting Note

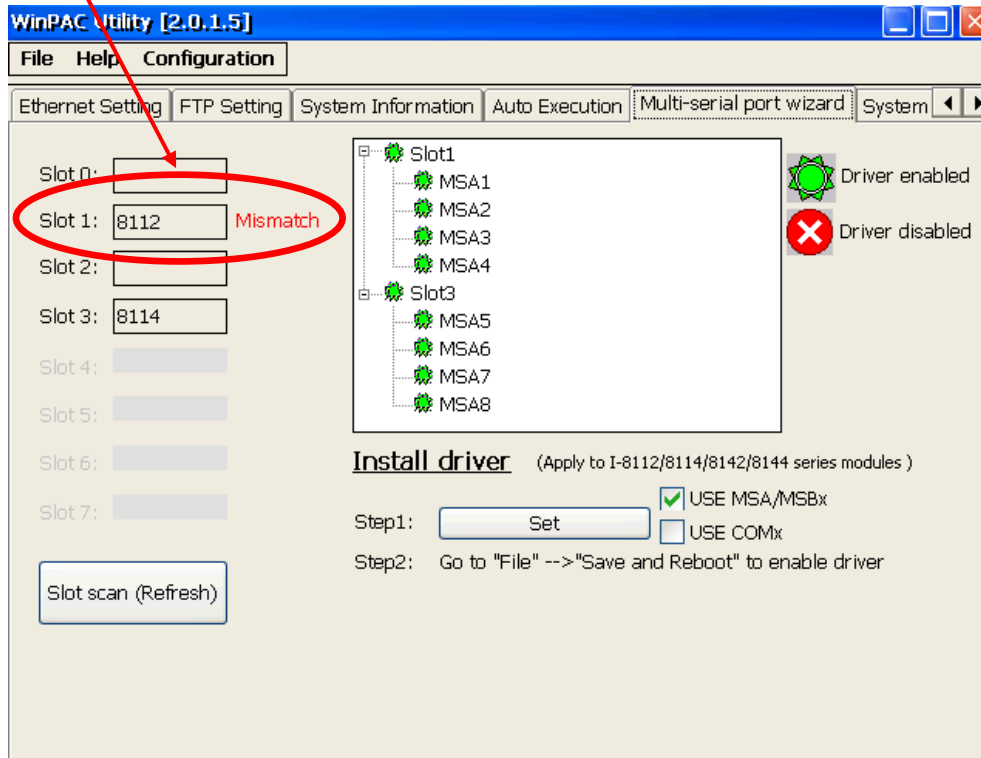
**Case1:** If the multi-serial port driver has been enabled, but there is no module in slot, a flashing “Mismatch” warning message will be displayed next to the slot scan list column.



**Solution:** Reinstall the multi-serial port driver.

Classification	System and Application FAQ on WinCE PAC				No.	1-007-02	
Author	Tunglu-Yu	Version	1.0.1	Date	2013/08/06	Page	10/12

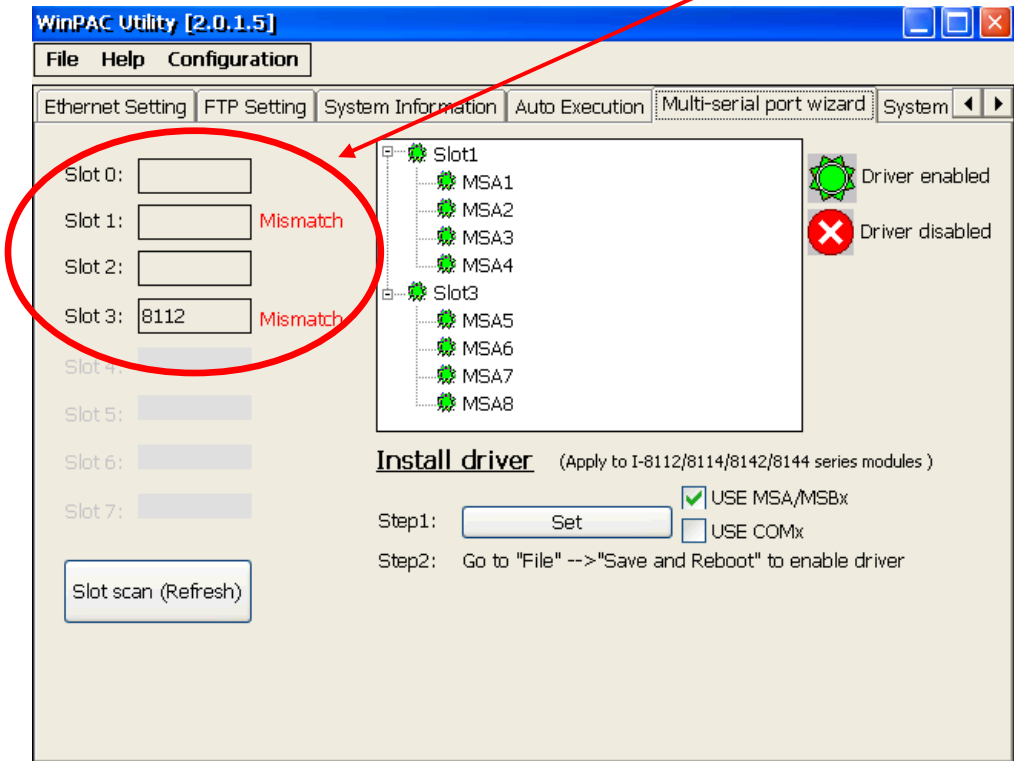
**Case2:** If the driver installed is for a 4-port module (For example: I-8112/I-8114/I-8144) but the module current inserted in the slot is not a 4-port one (such as I-8142), the read “Mismatch” text message will flash next to the slot column to warn you.



**Solution:** Reinstall the multi-serial port driver.

Classification	System and Application FAQ on WinCE PAC				No.	1-007-02	
Author	Tunglu-Yu	Version	1.0.1	Date	2013/08/06	Page	11/12

**Case3:** You may want to remove a module with driver installed and enabled and use new type modules for different applications. Whether you remove a module installed and enabled or you add a new module without driver installed, a flashing “Mismatch” warning message will be display.



**Solution:** Reinstall the multi-serial port driver.

Classification	System and Application FAQ on WinCE PAC				No.	1-007-02	
Author	Tunglu-Yu	Version	1.0.1	Date	2013/08/06	Page	12/12

## Revision History

Revision	Date	Description
1.0.1	2013/08/06	NEW: Added support information for VP-4131 series
1.0.0	2010/02/12	Initial release