

Classification	System and Application FAQ on WinCE PAC				No.	1-005-05	
Author	Tunglu-Yu	Version	1.0.1	Date	2013/08/06	Page	1/4

How to calibrate an ELO serial touch panel

Applied to:

Platform	OS version	WinPAC/ViewPAC utility version
WP-8x3x/ WP-8x4x	All versions	All versions
WP-5000	All versions	All versions
VP-23W1/ VP-25W1	N/A	N/A
VP-4131	N/A	N/A

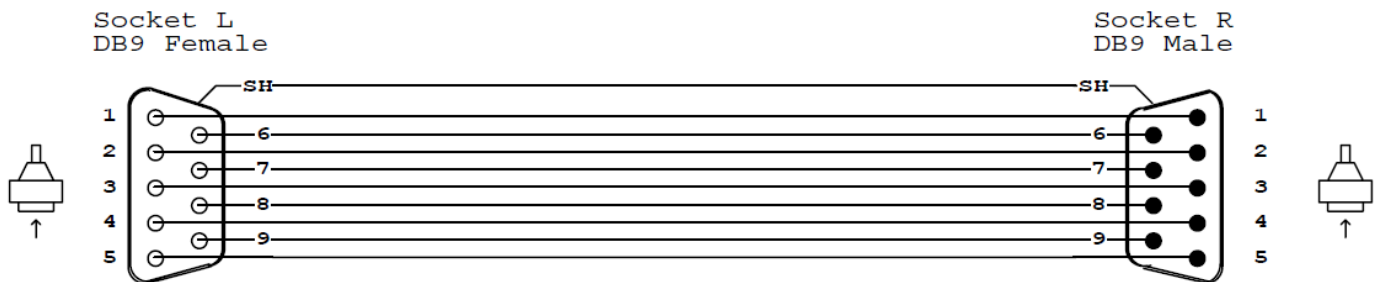
N/A: Not applicable to this platform and OS.

Tips & Warnings

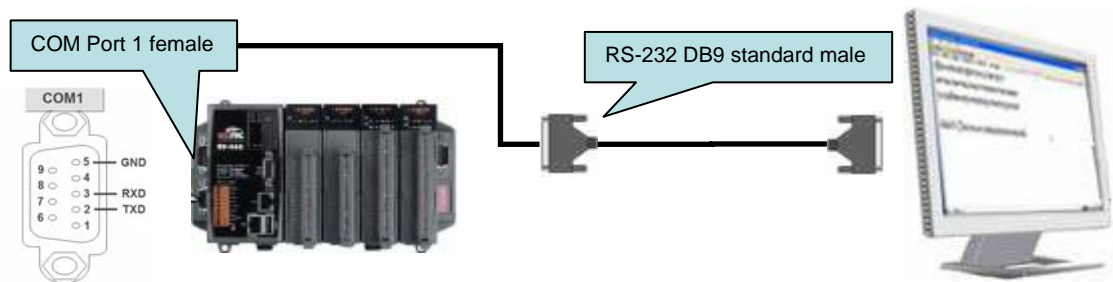


Serial COM Ports 1 and 4 on WP-8000 are standard female/male RS-232 COM Ports. If COM3 is used to connect to the touch panel, you will need a "NULL MODEM".

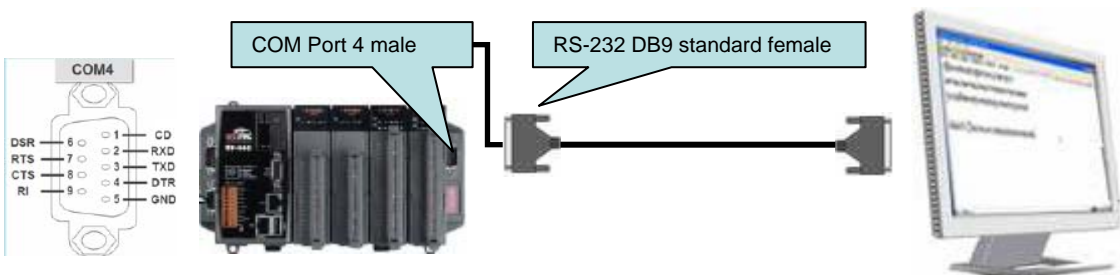
Standard Wiring



Connecting to COM1

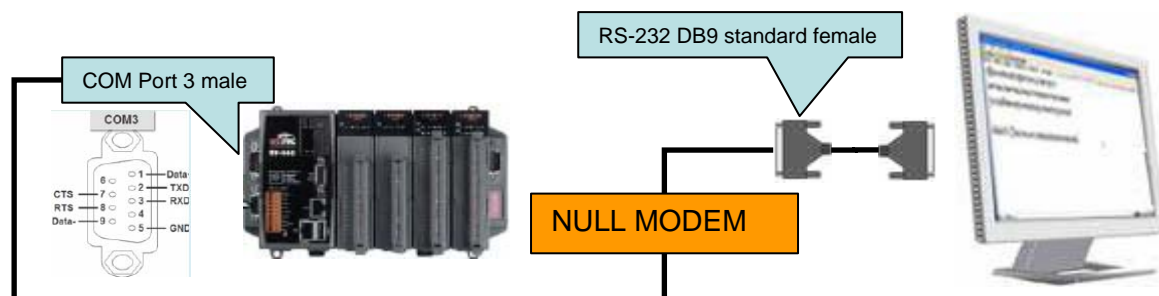


Connecting to COM4



Classification	System and Application FAQ on WinCE PAC				No.	1-005-05	
Author	Tunglu-Yu	Version	1.0.1	Date	2013/08/06	Page	2/4

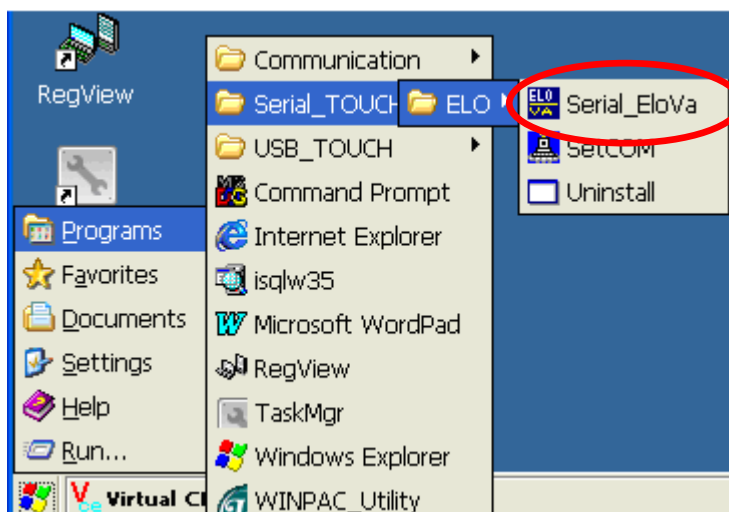
Connecting to COM3



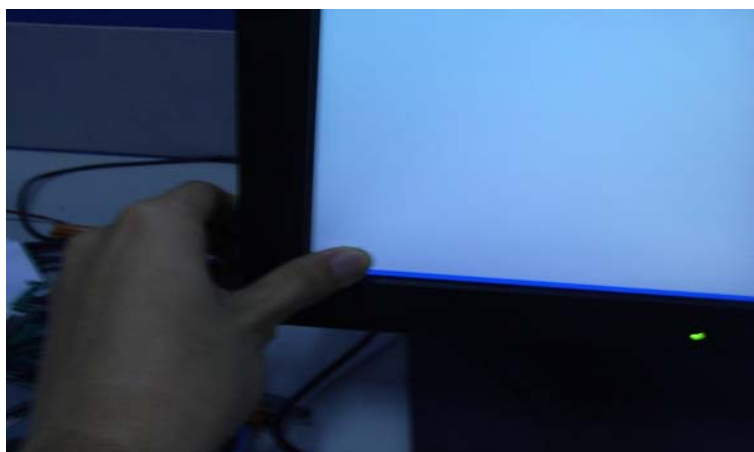
To calibrate an ELO serial touch panel, perform the following steps:

Step 1: Execute the calibration program.

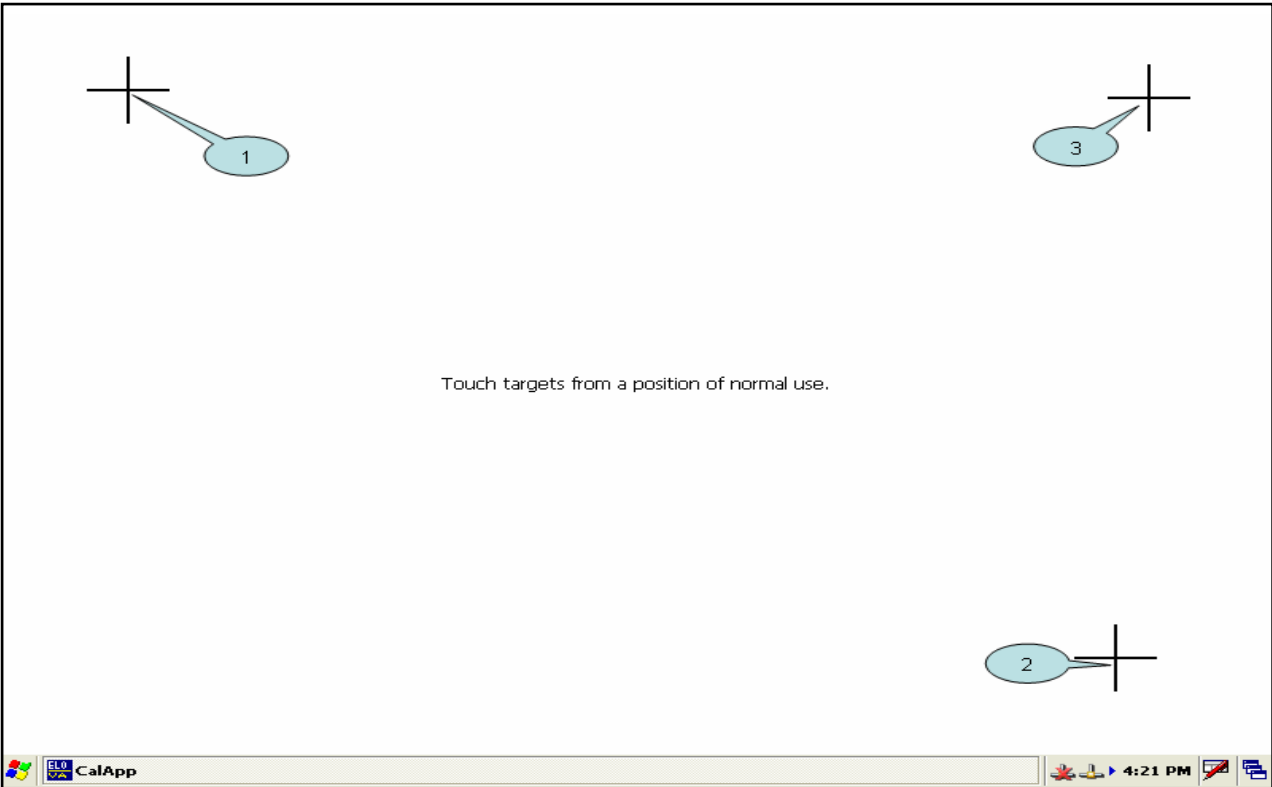
1.1. Click the Start → Programs → Serial_TOUCH → ELO → Serial_EloVa.



1.2. Touch the “+” icons on the monitor one by one to perform the calibration process.

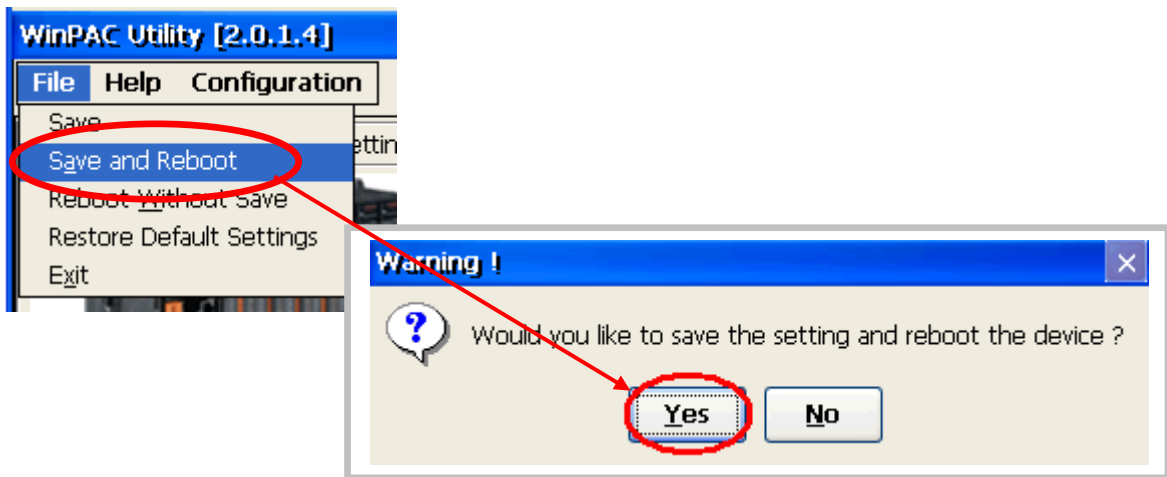


Classification	System and Application FAQ on WinCE PAC				No.	1-005-05	
Author	Tunglu-Yu	Version	1.0.1	Date	2013/08/06	Page	3/4



Step 2: Save and Reboot your WinPAC.

- 2.1. Start the Win PAC utility on the desktop and click **“File”** → **“Save and Reboot”**.
- 2.2. Click the **“Yes”** button and wait for the device to reboot.



Classification	System and Application FAQ on WinCE PAC				No.	1-005-05	
Author	Tunglu-Yu	Version	1.0.1	Date	2013/08/06	Page	4/4

Revision History

Revision	Date	Description
1.0.1	2013/08/06	NEW: Added support information for WP-5000 series
1.0.0	2010/02/12	Initial release