

Classification	System and Application FAQ on WinCE PAC				No.	1-005-04	
Author	Tunglu-Yu	Version	1.0.1	Date	2013/08/06	Page	1/4

# How to calibrate an Egalax serial touch panel

Applied to:

Platform	OS version	WinPAC/ViewPAC utility version
WP-8x3x/ WP-8x4x	All versions	All versions
WP-5000	All versions	All versions
VP-23W1/ VP-25W1	N/A	N/A
VP-4131	N/A	N/A

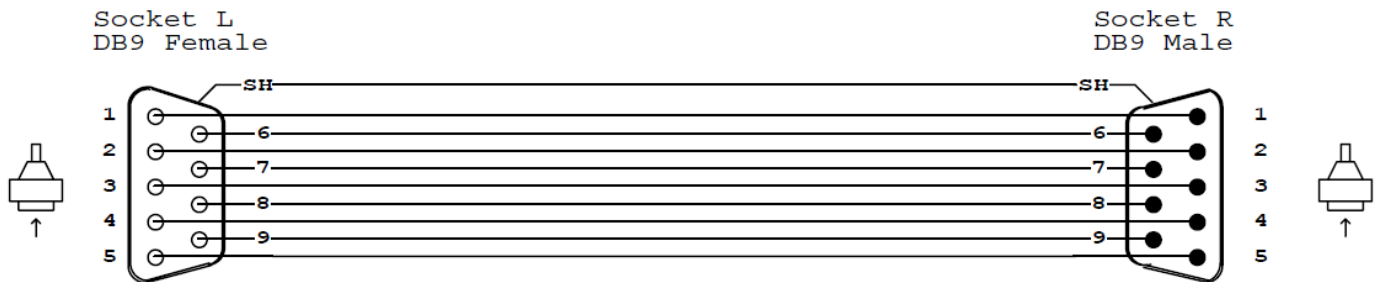
N/A: Not applicable to this platform and OS.

## Tips & Warnings

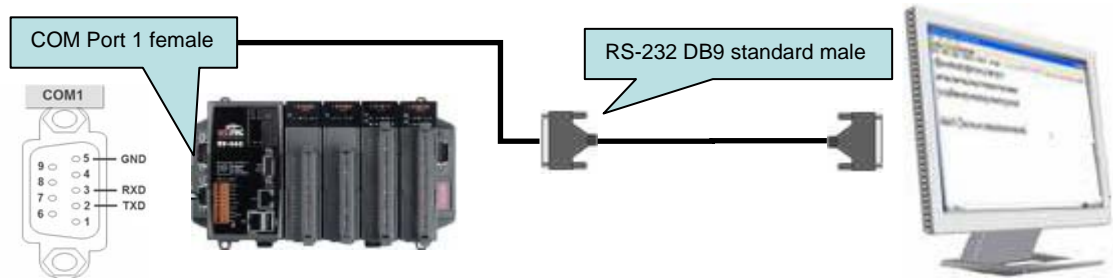


Serial COM Ports 1 and 4 on WP-8000 are standard female/male RS-232 COM Ports. If COM3 is used to connect to the touch panel, you will need a "NULL MODEM".

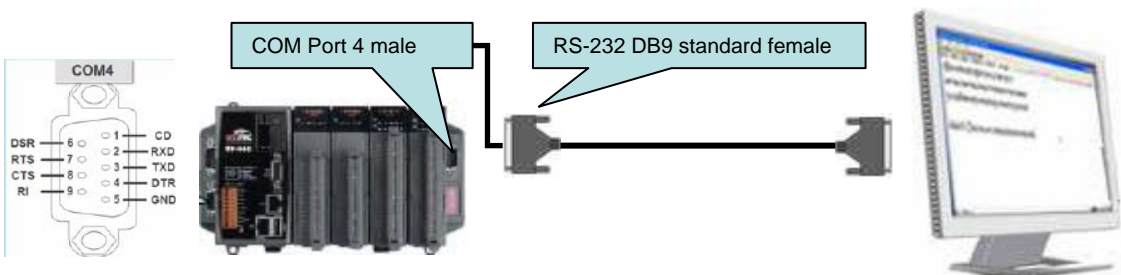
## Standard Wiring



## Connecting to COM1

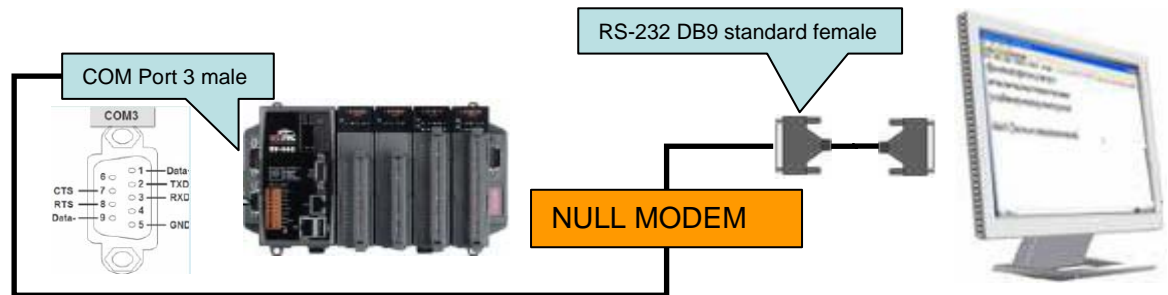


## Connecting to COM4



Classification	System and Application FAQ on WinCE PAC				No.	1-005-04	
Author	Tunglu-Yu	Version	1.0.1	Date	2013/08/06	Page	2/4

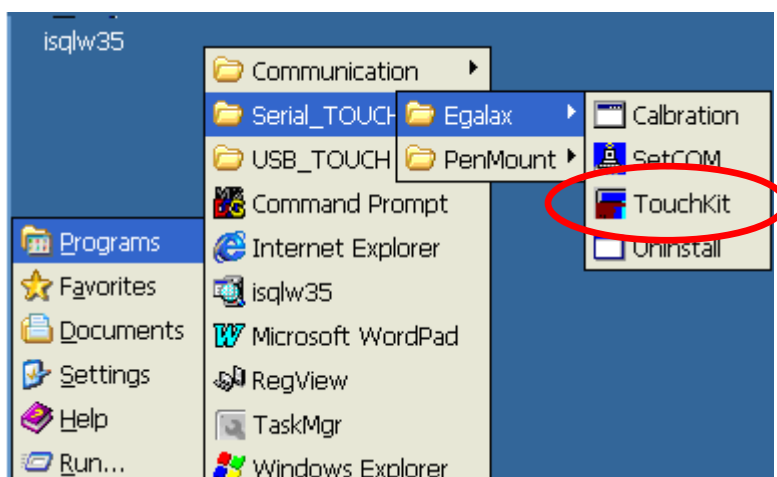
### Connecting to COM3



To calibrate an Egalax serial touch panel, please perform the following steps:

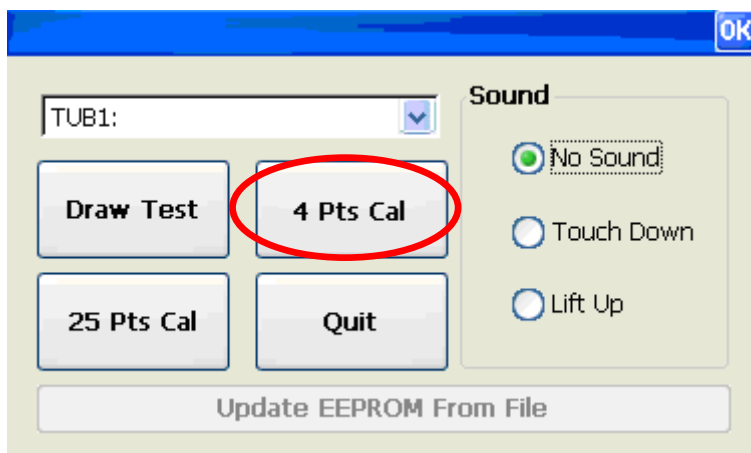
#### Step 1: Execute the calibration program.

1.1. Click Start → Programs → Serial\_TOUCH → Egalax → TouchKit.



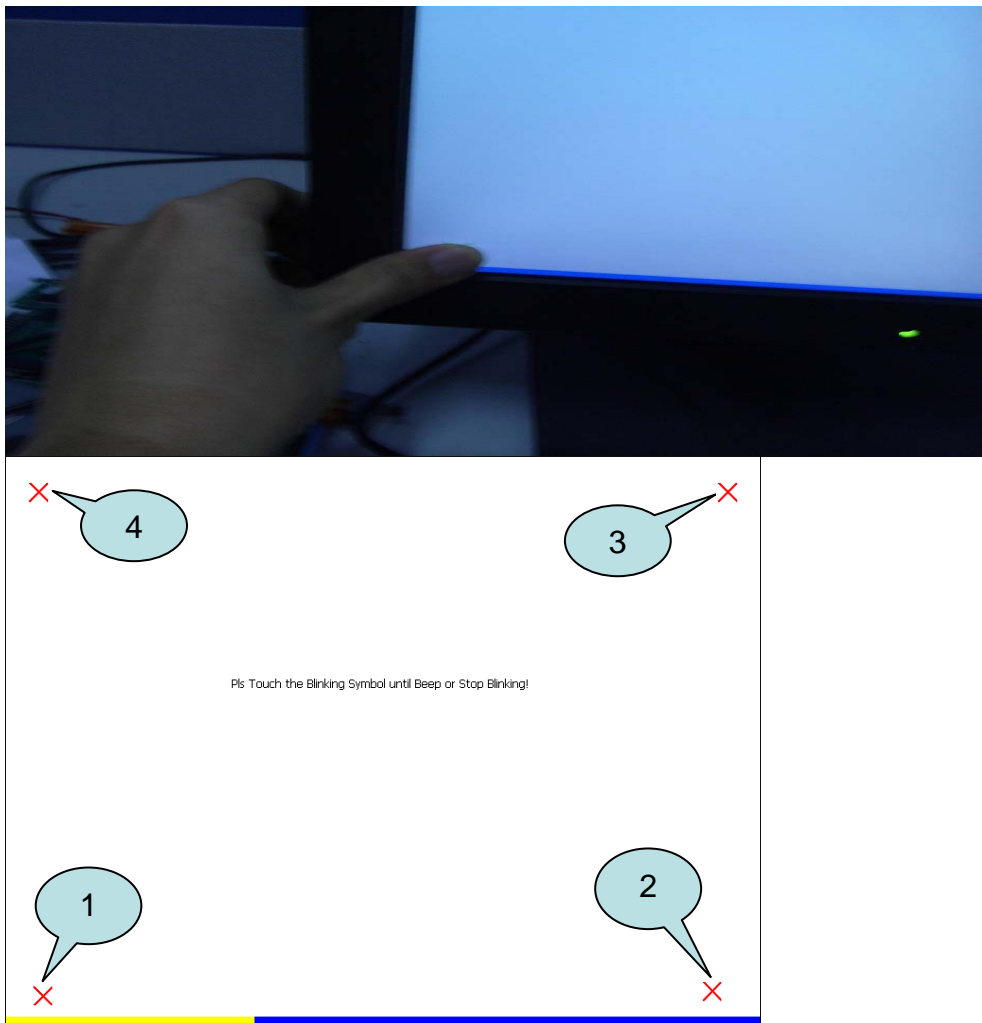
1.2. Click the “4 Pts Cal” button.

(Pressing the “25 Pts Cal” button would process more accurate calibration)



Classification	System and Application FAQ on WinCE PAC				No.	1-005-04	
Author	Tunglu-Yu	Version	1.0.1	Date	2013/08/06	Page	3/4

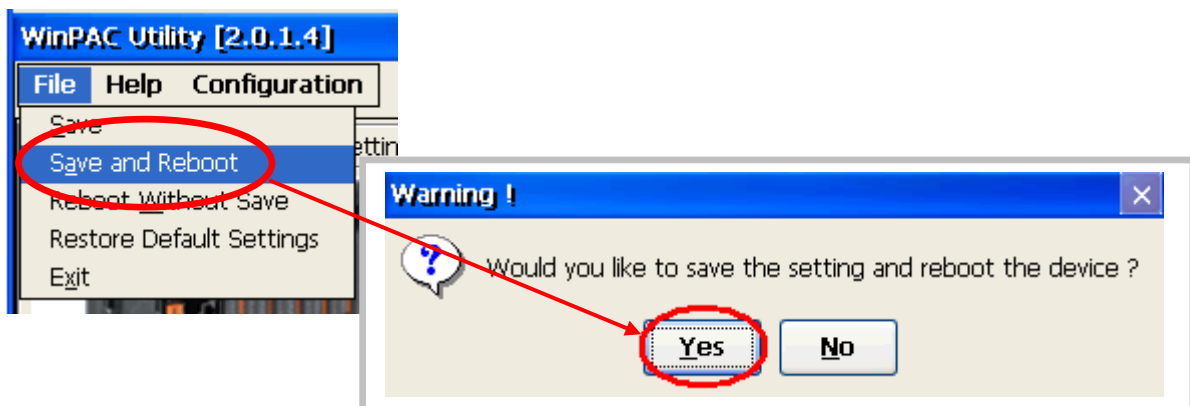
1.3. Touch the “X” icons on the monitor to perform the calibration process.



**Step 2:** Save the settings and reboot your WinPAC.

2.1. Start the WinPAC Utility on the desktop and then click “File” → “Save and Reboot”.

2.2. Click “Yes” button and wait for reboot.



Classification	System and Application FAQ on WinCE PAC				No.	1-005-04	
Author	Tunglu-Yu	Version	1.0.1	Date	2013/08/06	Page	4/4

## Revision History

Revision	Date	Description
1.0.1	2013/08/06	NEW: Added support information for WP-5000 series
1.0.0	2010/02/12	Initial release