

| | | | | | | | |
|----------------|---|---------|-------|------|------------|----------|-----|
| Classification | System and Application FAQ on WinCE PAC | | | | No. | 1-005-01 | |
| Author | Tunglu-Yu | Version | 1.0.1 | Date | 2013/08/06 | Page | 1/4 |

How to calibrate an Egalax USB touch panel

Applies to:

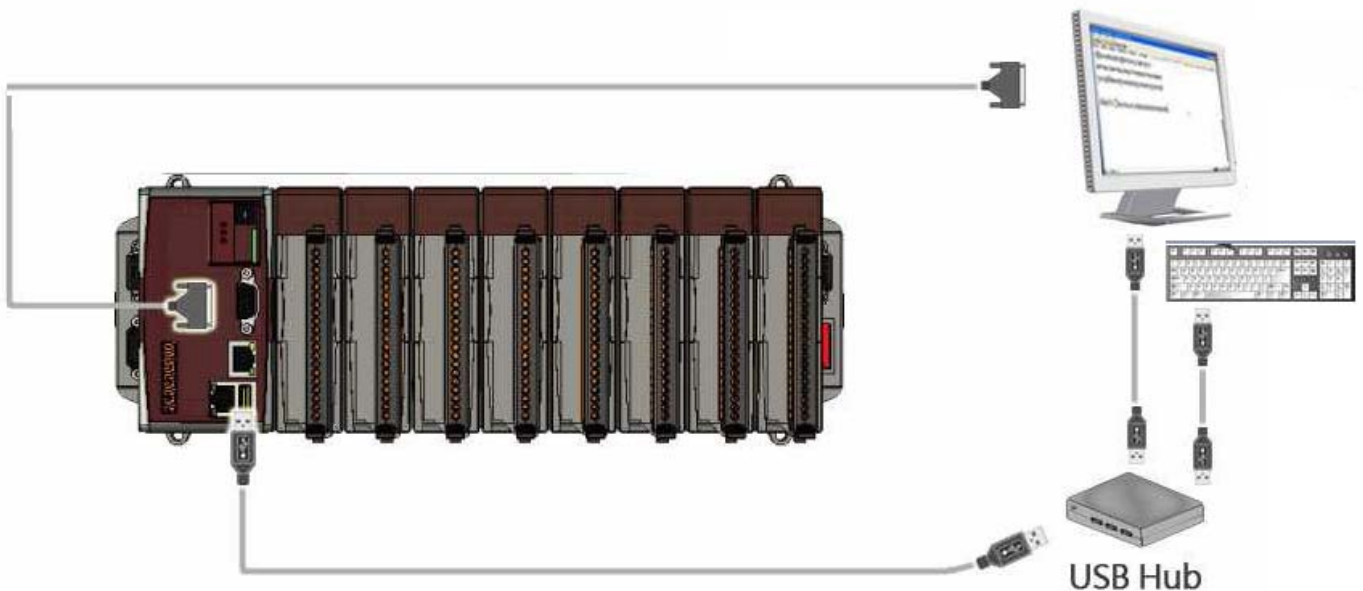
| Platform | OS version | WinPAC/ViewPAC utility version |
|------------------|--------------|--------------------------------|
| WP-8x3x/ WP-8x4x | All versions | All versions |
| WP-5000 | All versions | All versions |
| VP-23W1/ VP-25W1 | N/A | N/A |
| VP-4131 | N/A | N/A |

N/A: Not applicable to this platform and OS.

Tips & Warnings



To use a touch panel and a keyboard at the same time on WP-8x4x, you need a USB hub to expand the single USB port into several.

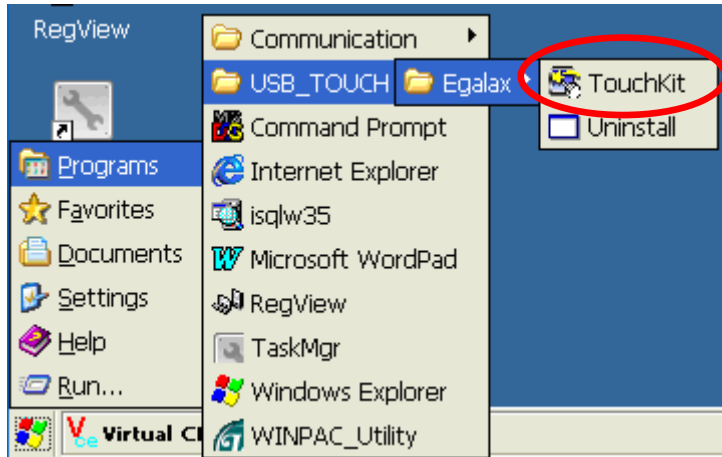


| | | | | | | | |
|----------------|---|---------|-------|------|------------|----------|-----|
| Classification | System and Application FAQ on WinCE PAC | | | | No. | 1-005-01 | |
| Author | Tunglu-Yu | Version | 1.0.1 | Date | 2013/08/06 | Page | 2/4 |

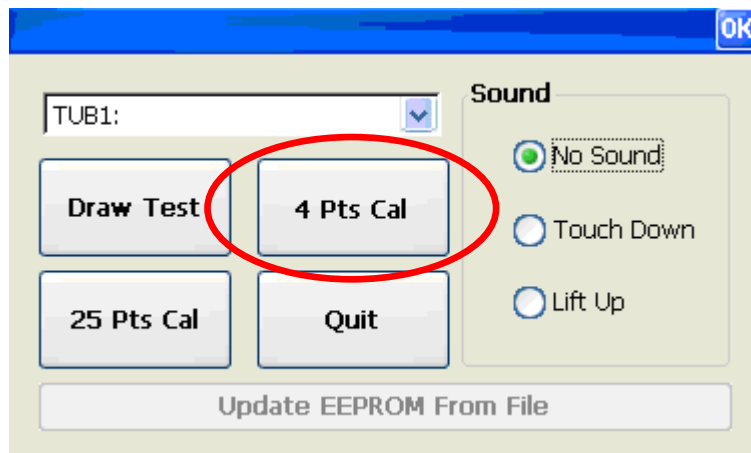
To calibrate an Egalax USB touch panel, perform the following steps:

Step 1: Execute the calibration program.

1.1. Click Start → Programs → USB_TOUCH → Egalax → TouchKit.

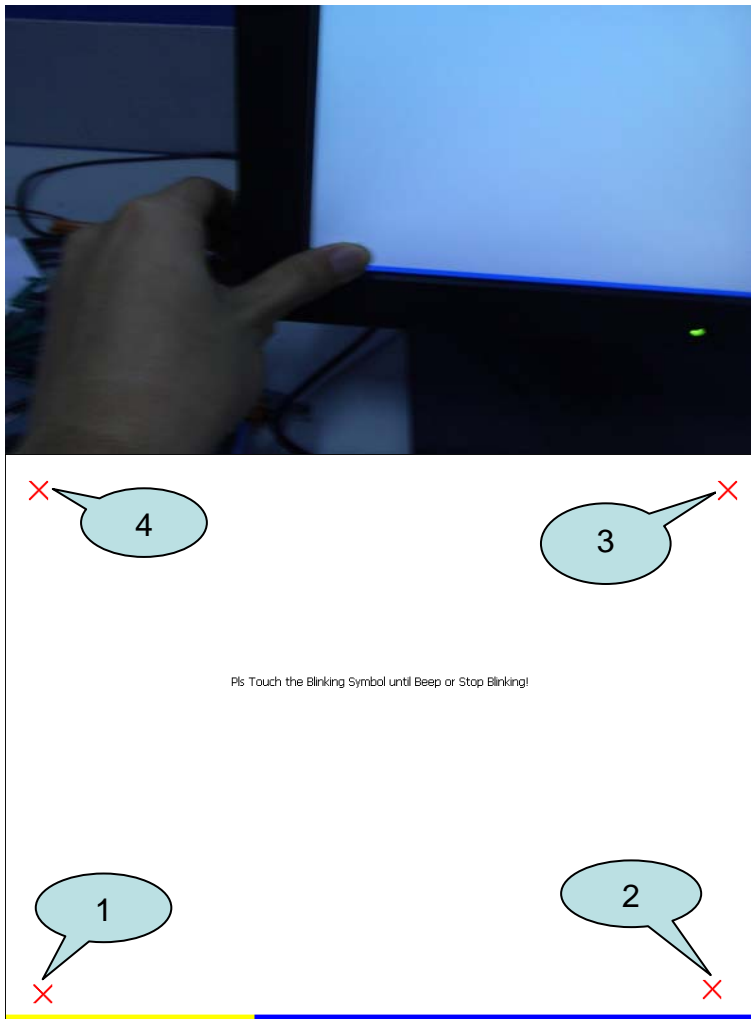


1.2. Click the “4 Pts Cal” button.
(Pressing “25 Pts Cal” button could process a more accurate calibration)



| | | | | | | | |
|----------------|---|---------|-------|------|------------|----------|-----|
| Classification | System and Application FAQ on WinCE PAC | | | | No. | 1-005-01 | |
| Author | Tunglu-Yu | Version | 1.0.1 | Date | 2013/08/06 | Page | 3/4 |

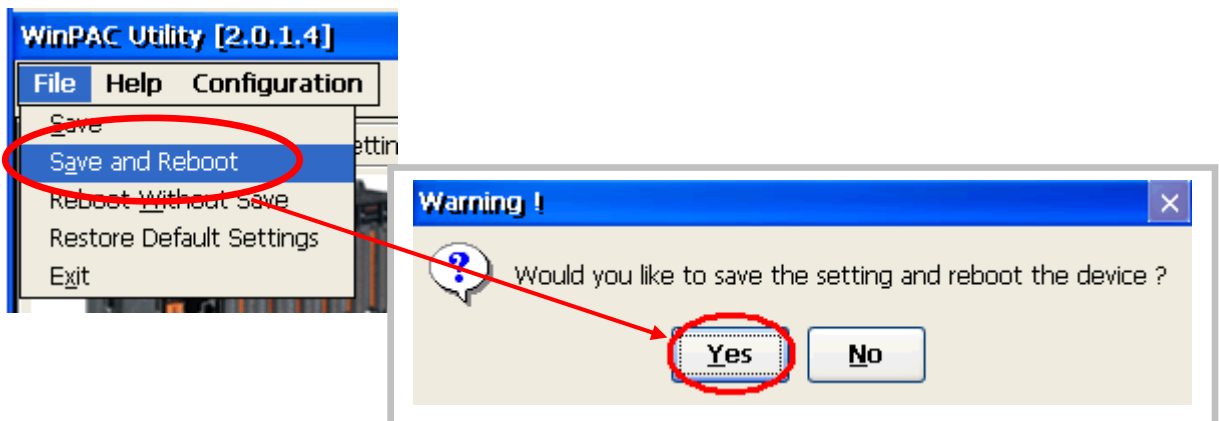
1.3. Touch the “X” icons on the monitor to perform the calibration process.



Step 2: Save and Reboot your WinPAC.

2.1. Start the Win PAC utility on the desktop and click the “File” → “Save and Reboot”.

2.2. Click the “Yes” button and wait for reboot.



| | | | | | | | |
|----------------|---|---------|-------|------|------------|----------|-----|
| Classification | System and Application FAQ on WinCE PAC | | | | No. | 1-005-01 | |
| Author | Tunglu-Yu | Version | 1.0.1 | Date | 2013/08/06 | Page | 4/4 |

Revision History

| Revision | Date | Description |
|----------|------------|---|
| 1.0.1 | 2013/08/06 | NEW: Added support information for WP-5000 series |
| 1.0.0 | 2010/02/12 | Initial release |