

Classification	System and Application FAQ on WinCE PAC				No.	1-004-04	
Author	Tunglu-Yu	Version	1.0.1	Date	2013/8/06	Page	1/6

How to set up an Egalax serial touch panel

Applied to:

Platform	OS version	WinPAC/ViewPAC utility version
WP-8x3x/ WP-8x4x	All versions	All versions
WP-5000	All versions	All versions
VP-23W1/ VP-25W1	N/A	N/A
VP-4131	N/A	N/A

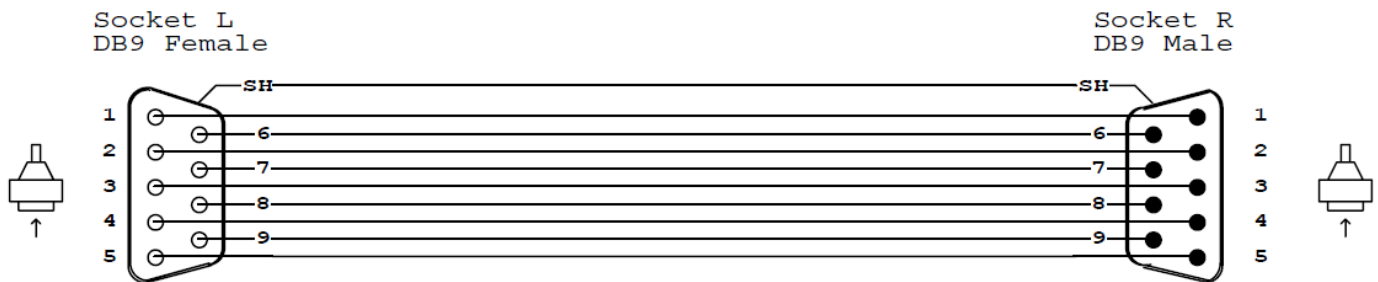
N/A: Not applicable to this platform and OS.

Tips & Warnings

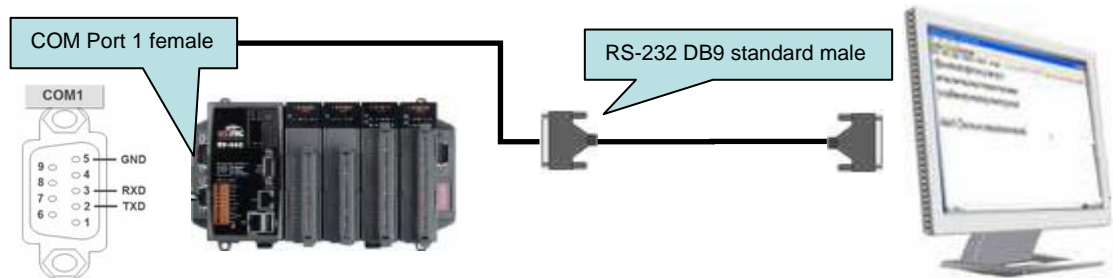


Serial COM Ports 1 and 4 on WP-8000 are standard female/male RS-232 COM Ports. If COM3 is used to connect to the touch panel, you will need a "NULL MODEM".

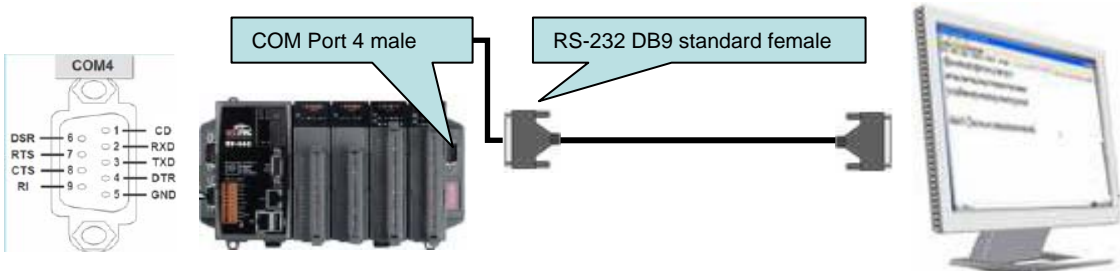
Standard Wiring



Connecting to COM1

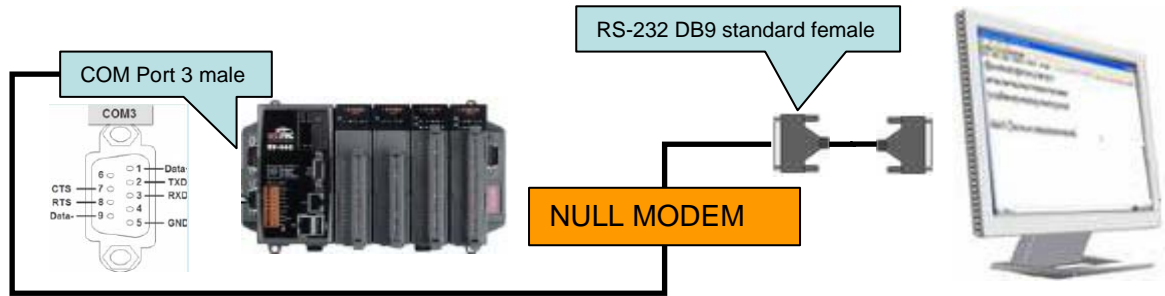


Connecting to COM4



Classification	System and Application FAQ on WinCE PAC				No.	1-004-04	
Author	Tunglu-Yu	Version	1.0.1	Date	2013/8/06	Page	2/6

Connecting to COM3



To use an Egalax serial touch panel, please perform the following steps:

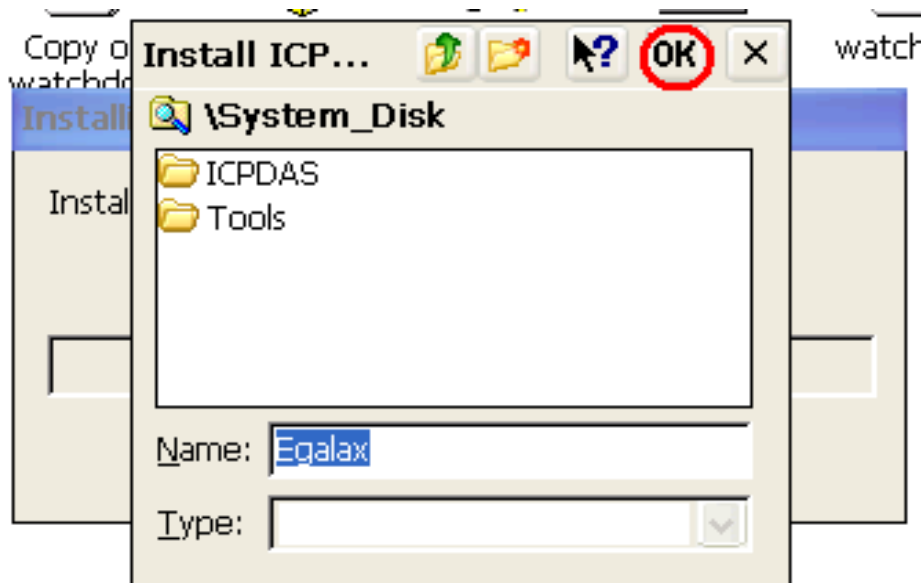
Step 1: Locate the driver.

The **Egalax_Serial_TOUCH_V20100729.cab** file is located at

1. WinPAC file path: \Micro_SD\External_device_driver\
2. CD: \napdos\wp-8x4x_ce50\Micro_SD\External_device_driver\
3. ftp://ftp.icpdas.com/pub/cd/winpac/napdos/wp-8x4x_ce50/Micro_SD/external_device_driver/

Step 2: Install the driver.

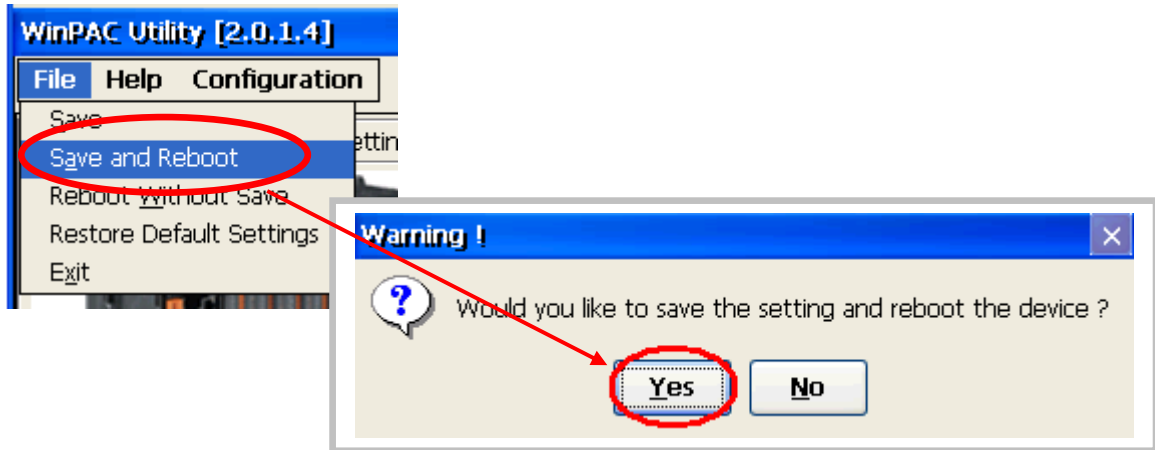
- 2.1. Double click the **Egalax_Serial_TOUCH_V20100729.cab** file, and then click "OK".



Classification	System and Application FAQ on WinCE PAC				No.	1-004-04	
Author	Tunglu-Yu	Version	1.0.1	Date	2013/8/06	Page	3/6

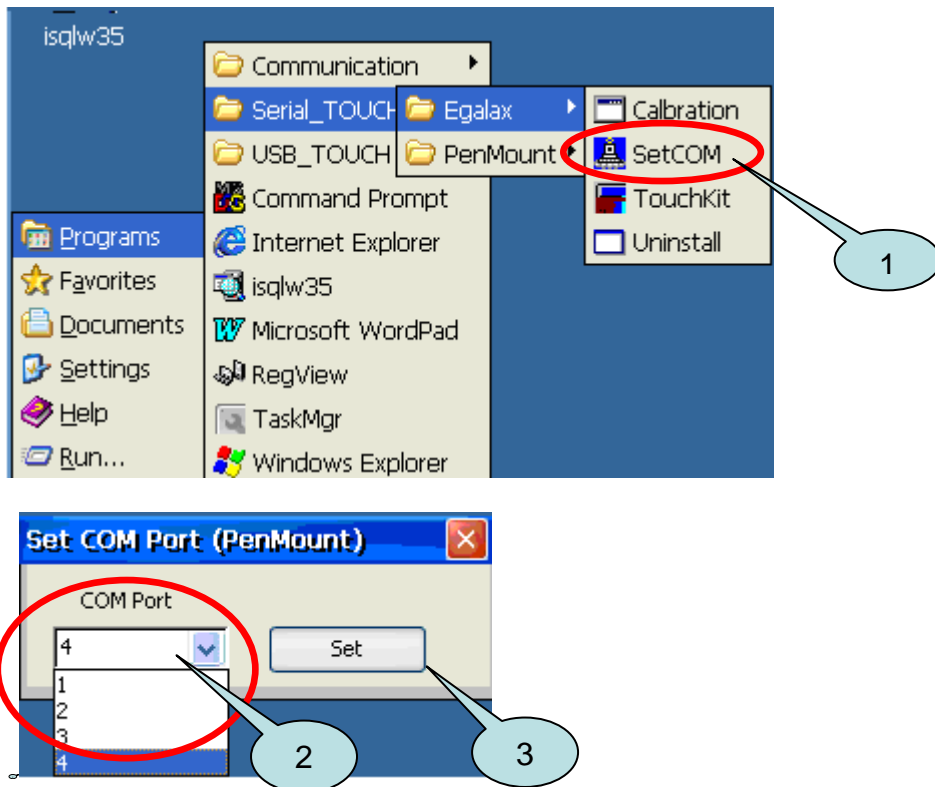
Step 3: Save and Reboot your WinPAC.

- 3.1. Start the Win PAC utility on the desktop and click **“File”** → **“Save and Reboot”**.
- 3.2. Click the **“Yes”** button on the warning box and wait for reboot.



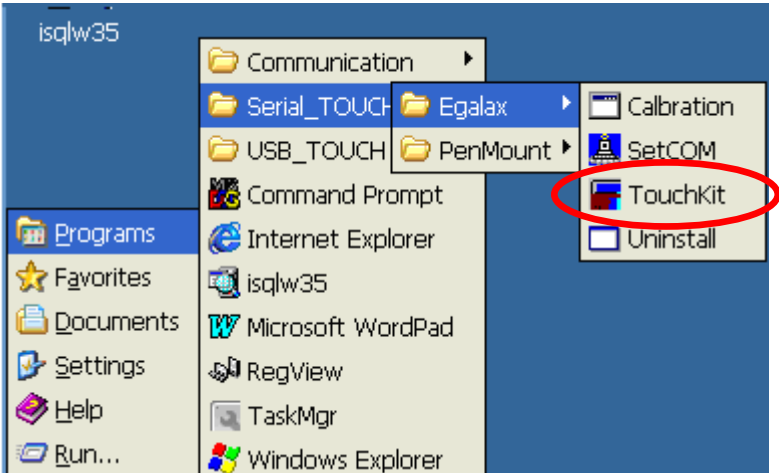
Step 4: Calibrate the touch panel.

- 4.1 Select the COM Port connected to the touch panel after rebooting.
 1. Click Start → Programs → Serial_TOUCH → Egalax → SetCOM.
 2. Select the COM port used and press **“Set”** button.



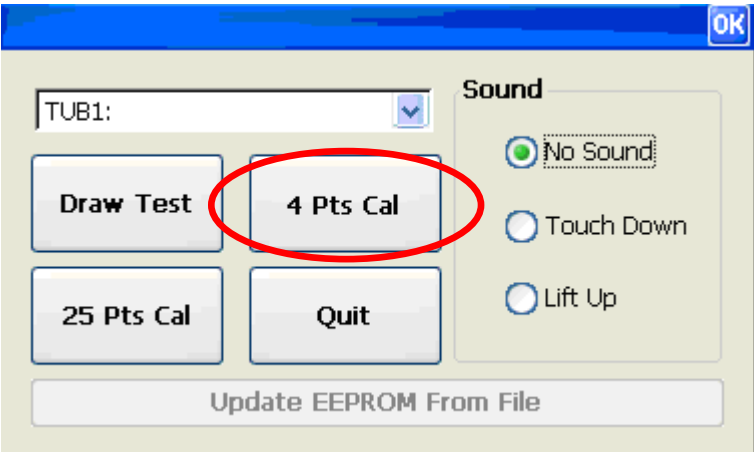
Classification	System and Application FAQ on WinCE PAC				No.	1-004-04	
Author	Tunglu-Yu	Version	1.0.1	Date	2013/8/06	Page	4/6

4.2. Click Start → Programs → Serial_TOUCH → Egalax → TouchKit

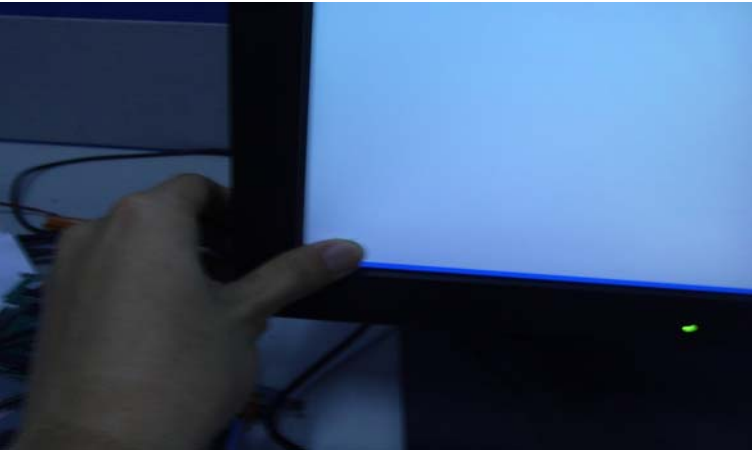


4.3. Click the “4 Pts Cal” button.

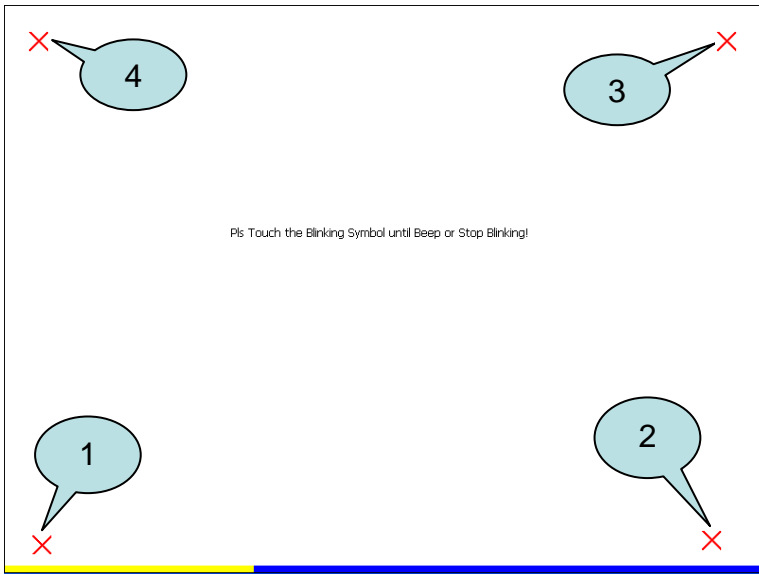
(Pressing “25 Pts Cal” button could process a more accurate calibration)



4.4. Touch the “X” icons on the monitor one by one to perform the calibration process.

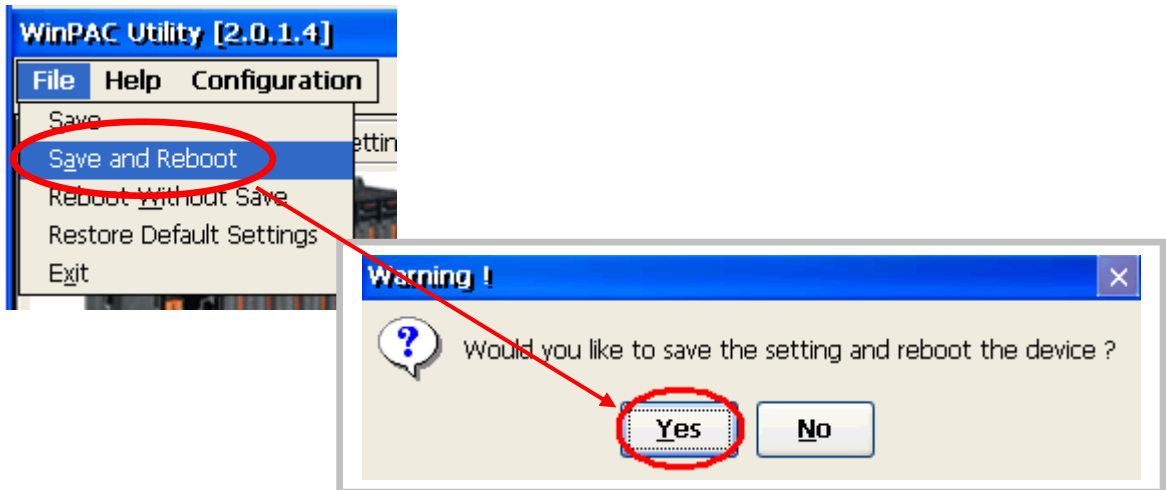


Classification	System and Application FAQ on WinCE PAC				No.	1-004-04	
Author	Tunglu-Yu	Version	1.0.1	Date	2013/8/06	Page	5/6



Step 5: Save the settings.

- 5.1. Start the WinPAC and click the **“File”** → **“Save and Reboot”** menu option.
- 5.2. Click **“Yes”** button on the warning box and wait for reboot.



Classification	System and Application FAQ on WinCE PAC				No.	1-004-04	
Author	Tunglu-Yu	Version	1.0.1	Date	2013/8/06	Page	6/6

Revision History

Revision	Date	Description
1.0.1	2013/08/06	NEW: Added support information for WP-5000 series
1.0.0	2010/02/12	Initial release