


WP-8x3x OS 1.6.0.0 Release Notes

Release Date: 01/25/2013

Key Features:

Features	Supported	Description
OS Language	Yes	WP-8x3x-EN: Multi-language, including: <ul style="list-style-type: none"> - English - German - Russian - French - Spanish - Italian - Korean WP-8x3x -SC: Simplified Chinese WP-8x3x -TC: Traditional Chinese
.NET Compact Framework 2.0 .NET Compact Framework 3.5	Yes	V2.0.7045 for Visual Studio .Net 2005/2008 V3.5.7283.0 for Visual Studio .Net 2008
SQL CE 3.5	Yes	SQL CE 3.5 (3.5.5386.0)
FTP Server	Yes	
HTTP Server	Yes	
Telnet	Yes	
Printer	Yes (PCL 6)	Support for HP Laser Jet printers with USB and Ethernet interfaces
Display Resolution	Yes	1024 * 768, 800 * 600, 640 * 480
Touch Panel	Yes	Support for touch panels using the RS-232 and USB interface
Multiport Serial Communication Module 	Yes	Support modules: <ul style="list-style-type: none"> I-8112iW (RS-232 *2) I-8114W (RS-232 *4) I-8114iW (RS-232 *4) I-8142iW (RS-485 *2) I-8144iW (RS-485 *4) The maximum number of ports can be extended is 16 (i.e., 4 slots * 4 ports per module = max. of 16 ports)

Software and Hardware Compatibility

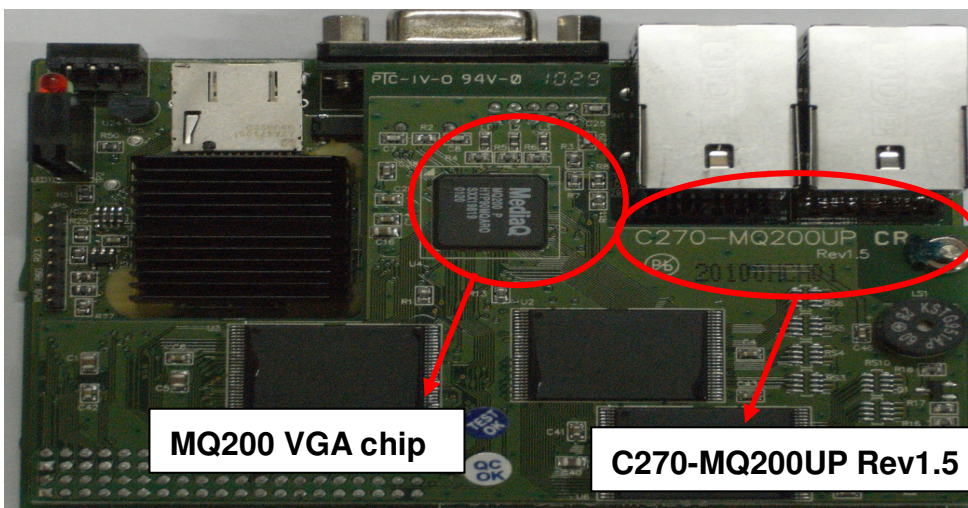
Software		Hardware		
OS	Eboot	C270-MQ200UP V1.5	C270-SM107UP V1.4	C270-SM107UP V1.5
V1.6.0.0 [01/22/2013]	V1.3.0.0	Yes	Yes	Yes
V1.3.0.1 [04/05/2012]	V1.3.0.0	Yes	Yes	Yes
V1.3.0.0 [11/30/2011]	V1.3.0.0	Yes	Yes	Yes
V1.2.0.3 [03/22/2011]	V1.2.1.0	Yes	Yes	-
V1.2.0.1 [04/15/2010]	V1.2.0.5	Yes		-

Notes:

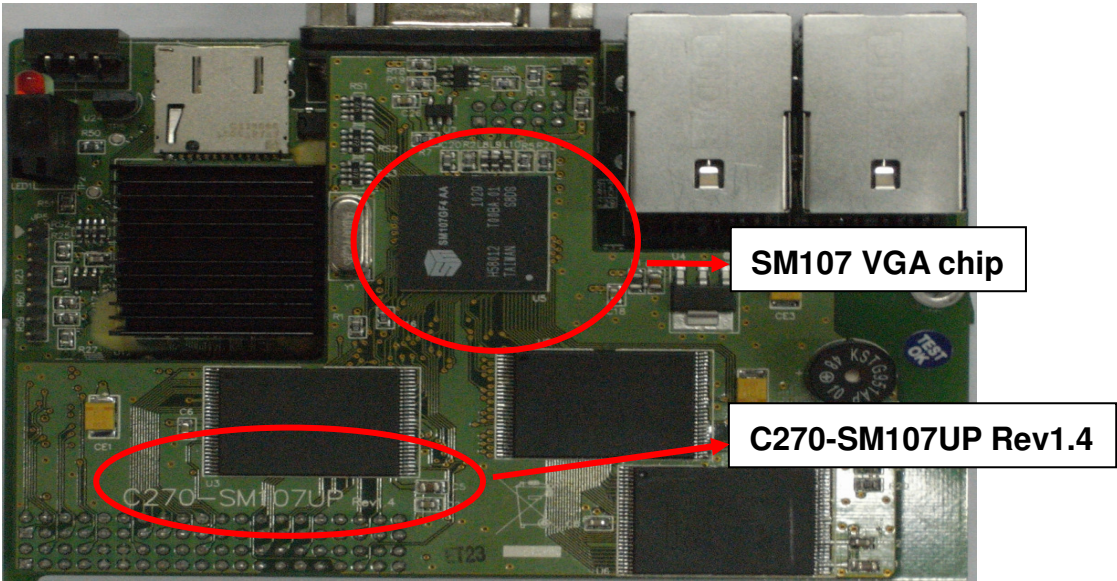
1. If you install the wrong OS Version, you will be unable to use the system_disk or the VGA.
2. The hardware for C270-MQ200UP V1.5 or earlier is equipped with the MQ200 VGA Chip and the Intel J3 105n flash chip.
3. The hardware for C270-SM107UP V1.4 is equipped with the SM107 VGA chip and the Intel J3 105n flash chip.
4. The hardware for C270-SM107UP V1.5 and later is equipped with the SM107 VGA chip and the MXIC MX28GL256F flash chip.

How to identify the hardware version number

For C270-MQ200UP Rev1.5



For C270-SM107UP Rev1.4



For C270-SM107UP Rev1.5

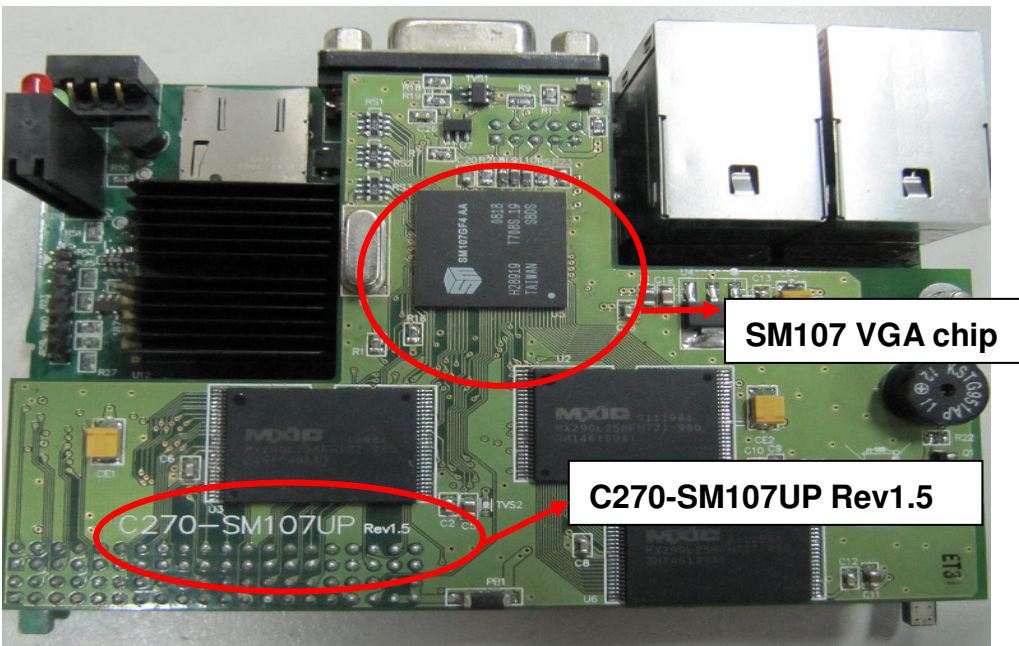


Table of Contents

WP-8x3x OS 1.6.0.0-Release Notes.....	5
How to Add a PPPoE Dial-up Connection	6

WP-8x3x OS 1.6.0.0-Release Notes

This release **adds supporting for PPPoE protocol** which can be used to connect to an ADSL network; increases the system_disk read/write speed, extends the useful life of the system_disk and resolves a problem that the system_disk couldn't be written in a particular situation. An error with the system may crash caused by 4 COM ports communicating simultaneously has been fixed. And the problem that the MMTIMER sometimes wouldn't work has also been solved.

New Features

- Added supporting for "PPPoE" dial-up, which can be used on an ADSL connection.
- Updated driver to support the I-8144iW hardware v2.20.

Improvements and Bug Fixes

- Resolved the problem that the system_disk would not be writable if the system was rebooted when the system_disk is defragmenting in the background.
- Increased the system_disk read/write speed and extended the useful life of the system_disk.
- Fixed an error with the multi-serial driver that the system sometimes crashed when four COM ports were communicating at the same time.
- Fixed the problem where MMTIMER sometimes wouldn't work.

Eboot Version

- No update (V1.3.0.0, 12/02/2011)

Software and Hardware Compatibility

Software		Hardware		
OS	Eboot	C270-MQ200UP V1.5	C270-SM107UP V1.4	C270-SM107UP V1.5
V1.6.0.0 [01/22/2013]	V1.3.0.0	相容	相容	相容

ViewPAC Utility and WinPAC SDK

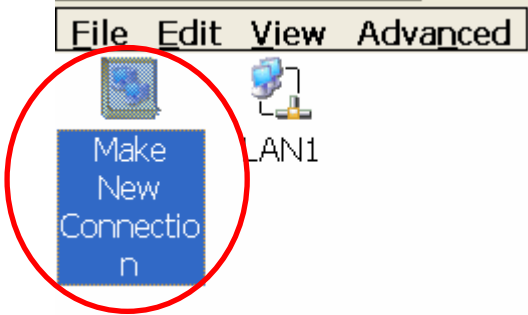
- WinPAC SDK DLL Version: 4.2.2.5 (11/21/2012)
- ViewPAC Utility Version: 2.1.0.3 (11/21/2012)

How to create a PPPoE Dial-up Connection

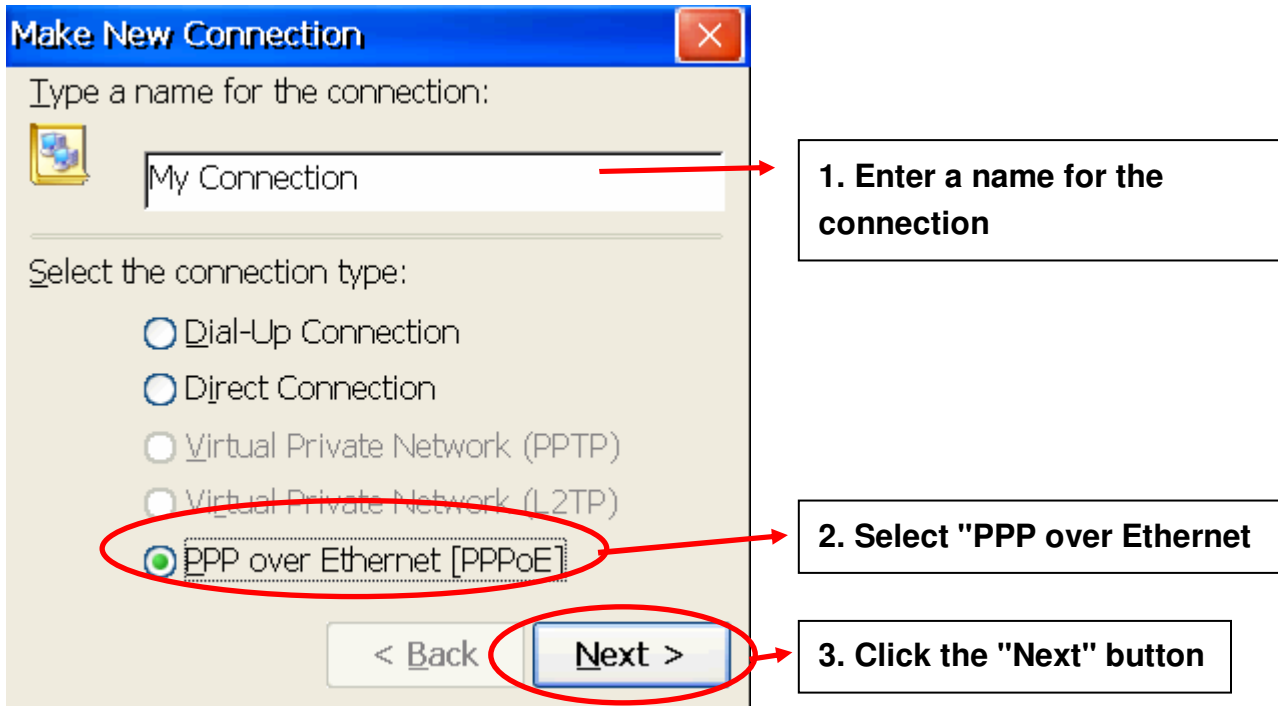
Step 1: Open the Network settings by clicking "Settings" → "Control Panel" and then double-click the "Network and Dial-up connections" icon.



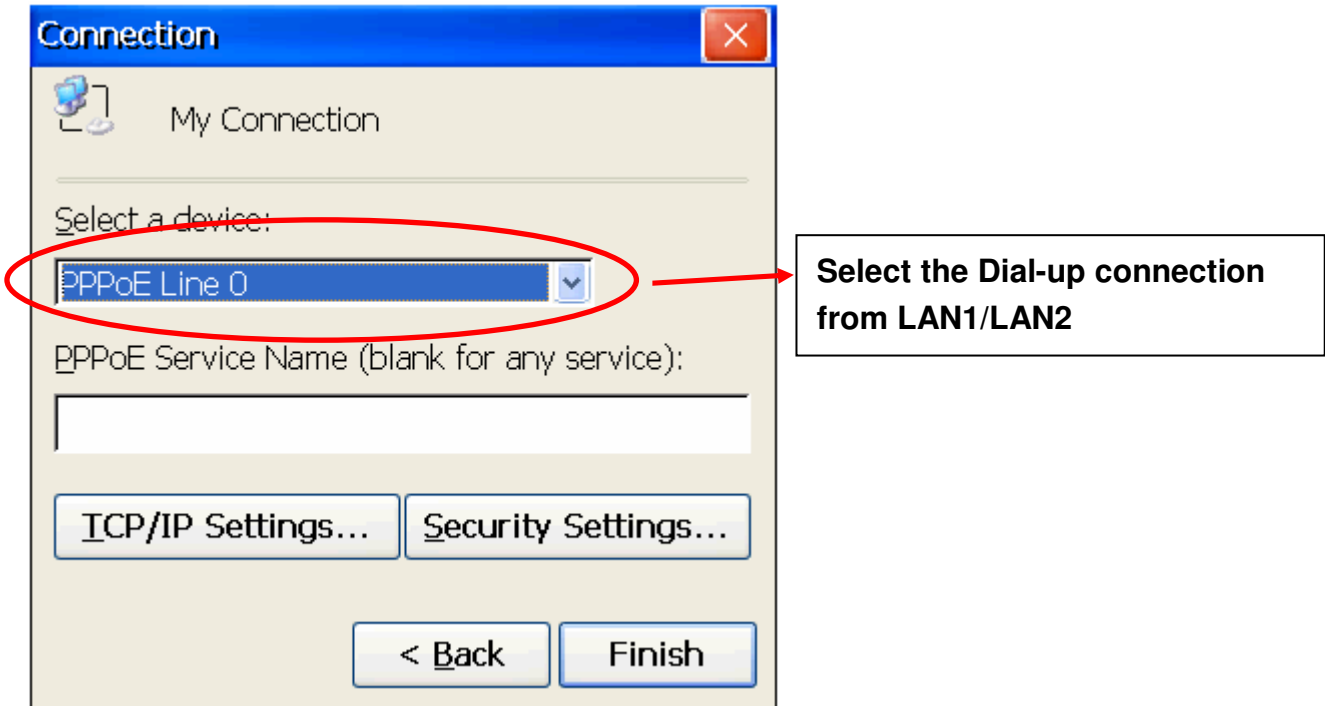
Step 2: Double-click the "Make New Connection" icon to create a new connection.



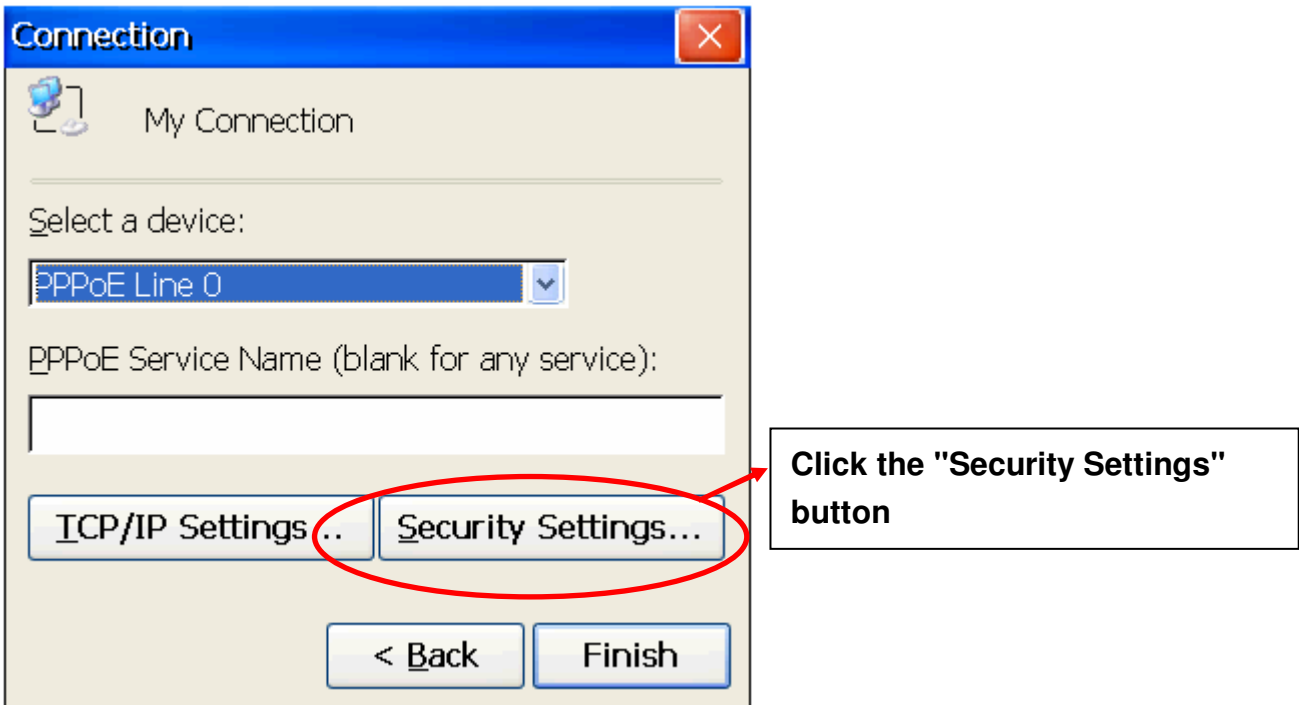
Step 3: In the pop-up dialog box, enter a name for the connection and select the "PPP over Ethernet (PPPoE)" option as the connection type, and then click the "Next" button.



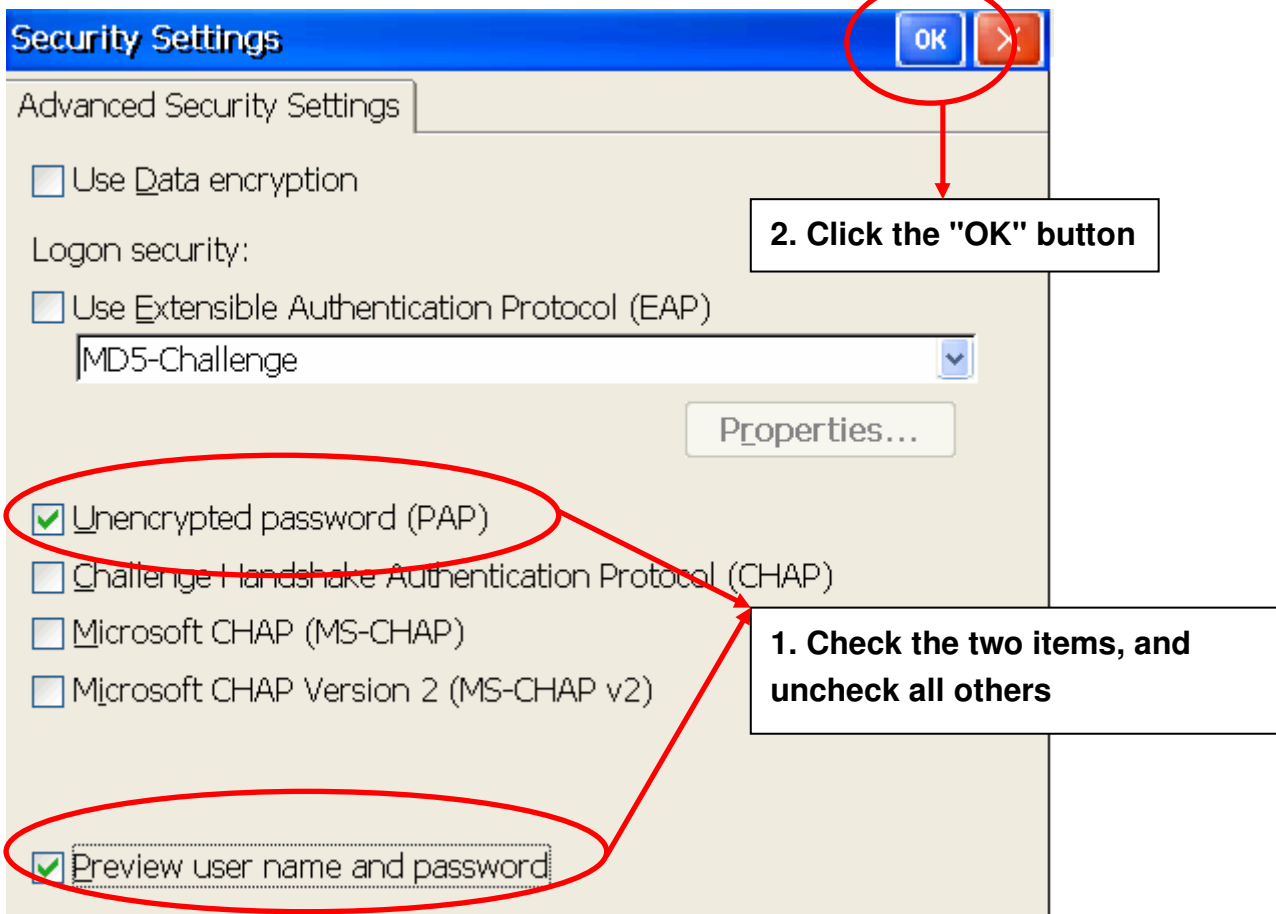
Step 4: In the "Select a device" drop-down menu, select the "PPPoE Line 0" option indicated as the dial-up connection from LAN1, select the "PPPoE Line 1" option indicated as the dial-up connection from LAN2.



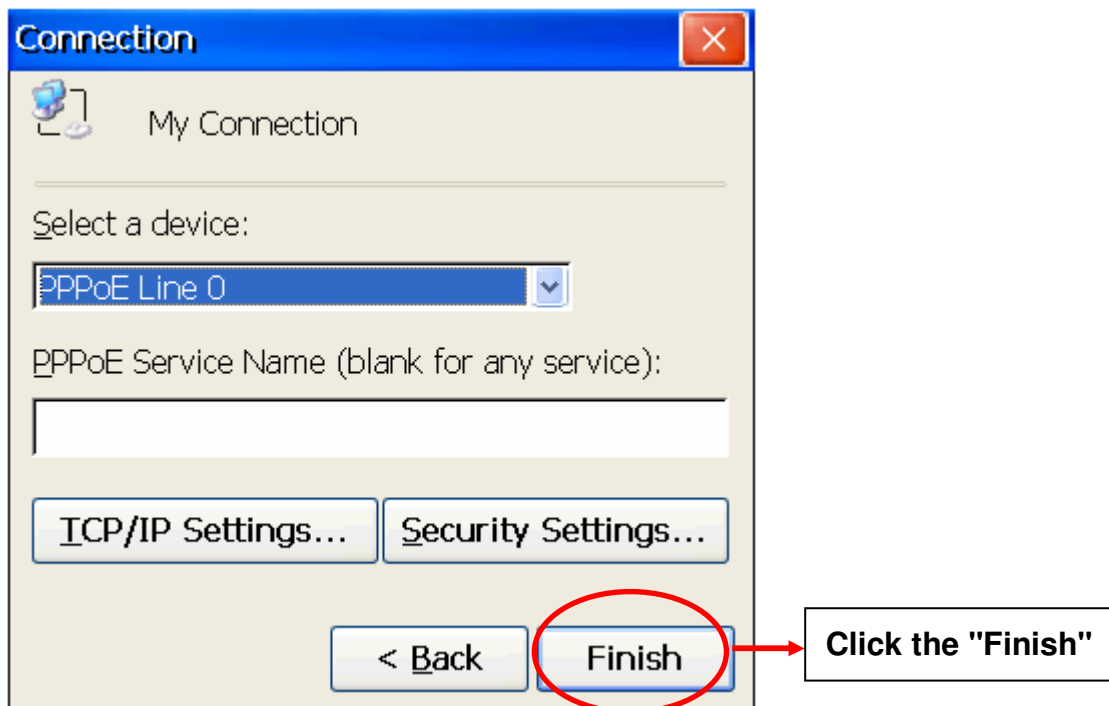
Step 5: Click the "Security Settings" button.



Step 6: In the "Security Settings" dialog box, check the "Unencrypted password (PAP)" and the "Preview user name and password" checkbox items, and uncheck all other items, then click the "OK" button.

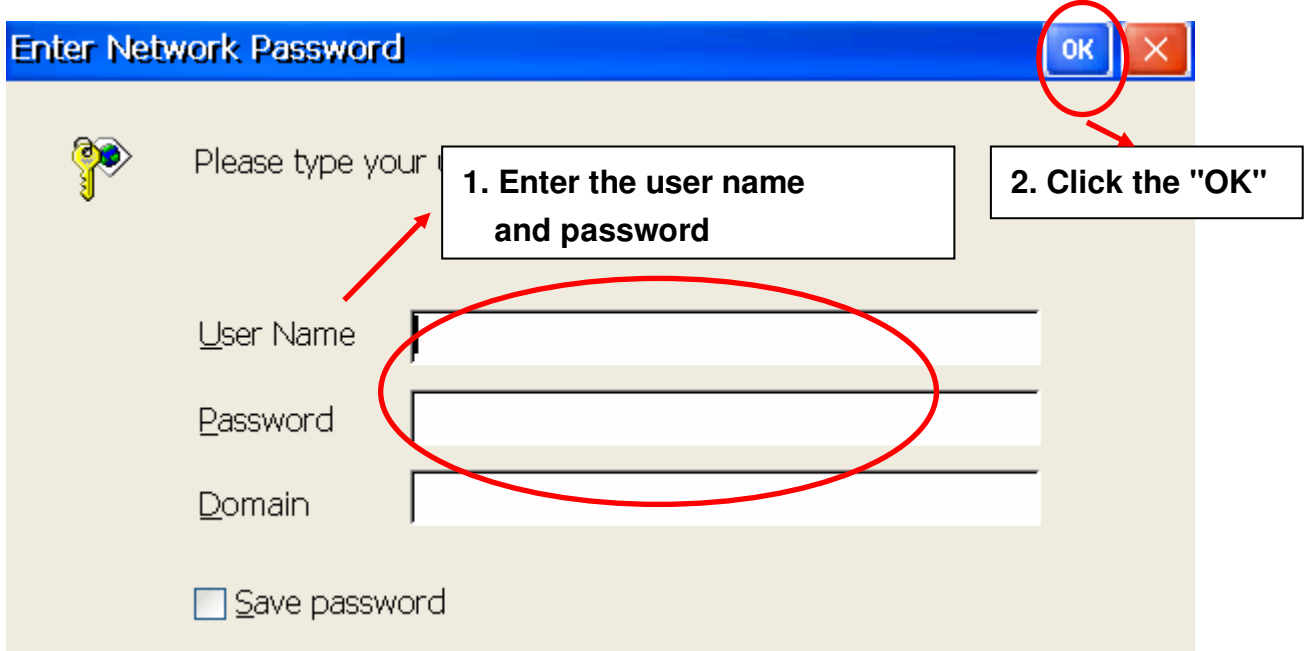


Step 7: Click the "Finish" button to save the settings.



Step 8: Double-click the icon for the new PPPoE connection (in the Network settings window) and then enter the user name and password in the login window. Click the "OK" button to establish the connection.

Note: If you wish to save the password for future use, check the "Save password" checkbox before pressing the OK button.



Step 9: The status window displayed with the message "Connected" indicates that the connection is successfully established.

