


WP-5000 CE 5.0 OS 1.3.3.0 Release Notes

Release Date: 04/27/2015

Key Features:

Features	Supported	Description
Windows CE 5.0 Core OS	Yes	
OS Language	Yes	WP-5000-EN: Multi-language <ul style="list-style-type: none"> - English - German - Russian - French - Spanish - Italian - Korean WP-5000 -SC: Simplified Chinese WP-5000 -TC: Traditional Chinese
.NET Compact Framework 2.0 .NET Compact Framework 3.5	Yes	V2.0.7045 for Visual Studio .Net 2005/2008 V3.5.7283.0 for Visual Studio .Net 2008
SQL CE 3.5	Yes	SQL CE 3.5 (3.5.5386.0)
FTP Server	Yes	
HTTP Server	Yes	
Telnet	Yes	
Printer	Yes(PCL 6)	Support for HP Laser Jet printers with USB and Ethernet interfaces
Display Resolution	Yes	800 * 600, 640 * 480
Touch Panel	Yes	Support for touch panels using the RS-232 and USB interfaces
XW board 	Yes	Support modules: <ul style="list-style-type: none"> XW107 (8 DI, 8 DO) XW506 (RS-232 * 6) XW507 (6 DI, 6 DO, RS-485 * 1) XW509 (4 DI, 4 DO, RS-232 * 2) XW511i (RS-485 * 4) XW514 (RS-485 * 8)

Software and Hardware Compatibility

Software		Hardware		
OS	Eboot	V1.6	V2.21	V2.4
V1.3.3.0 [04/27/2014]	V1.2.1.0	Yes	Yes	Yes
V1.3.2.0 [03/10/2014]	V1.2.1.0	Yes	Yes	Yes
V1.3.1.0 [09/03/2013]	V1.2.0.0	Yes	Yes	Yes
V1.3.0.0 [02/06/2013]	V1.2.0.0	Yes	Yes	Yes
V1.1.1.0 [05/29/2012]	V1.2.0.0	Yes	Yes	(* Note 1)
V1.0.0.0 [03/22/2011]	V1.0.0.0	Yes	Yes	-

Note1:

OS 1.1.1.0 works well on hardware v2.4 except support for COM 2 and COM 3.

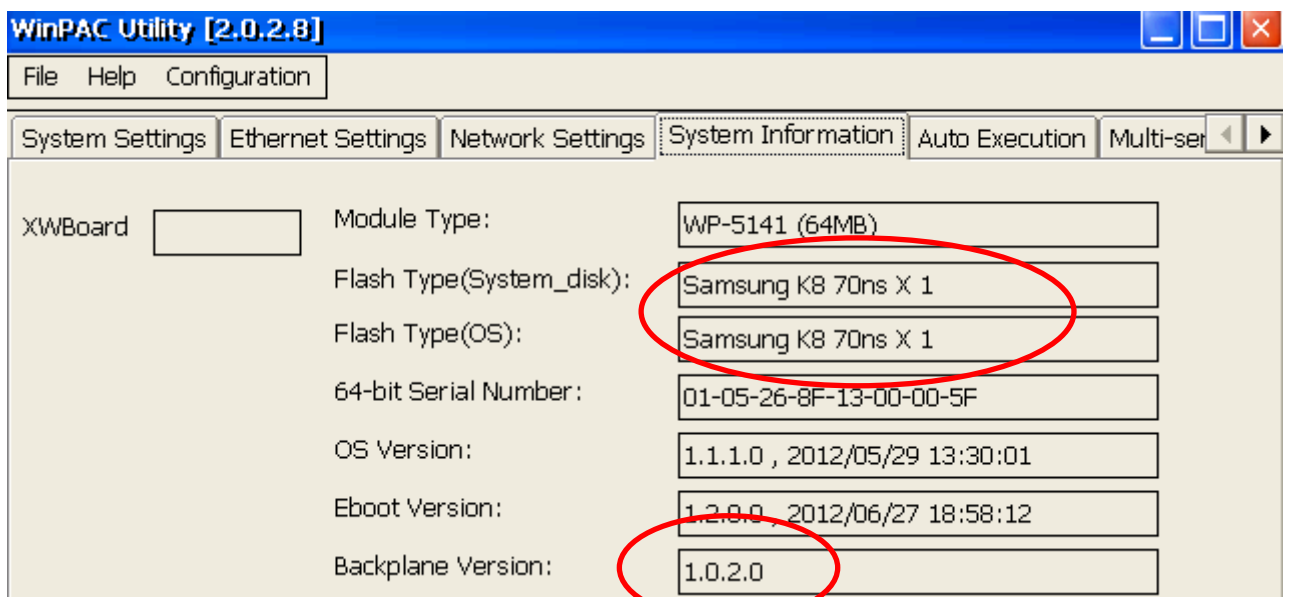
Note2:

1. V1.6 hardware is equipped with the PXA270 CPU and Samsung K8 70ns chip.
2. V2.21 hardware is equipped with the PXA270M CPU and MXIC MX29GL256F chip.
3. V2.4 hardware is equipped with the PXA270M CPU and MXIC MX29GL256F chip, while COM 2 and COM3 use the 16C950 chip.

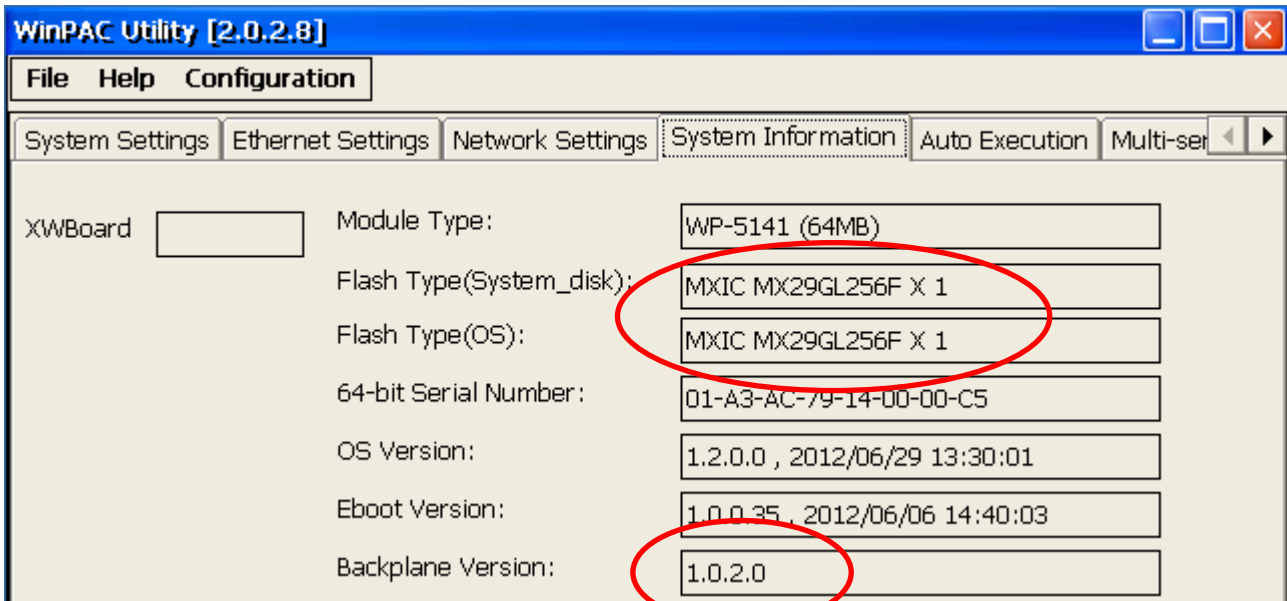
How to determine the Hardware version number

From the information displayed on the “System information” tag in WinPAC Utility (Ver. 2.0.2.8 and later), you can determine the hardware version number as below:

Hardware v.1.6: Samsung K8 70ns + Backplane 1.0.2.0



Hardware V2.21: MXIC MX29GL256F + Backplane 1.0.2.0



Hardware V2.4: MXIC MX29GL256F + Backplane 1.0.82.0

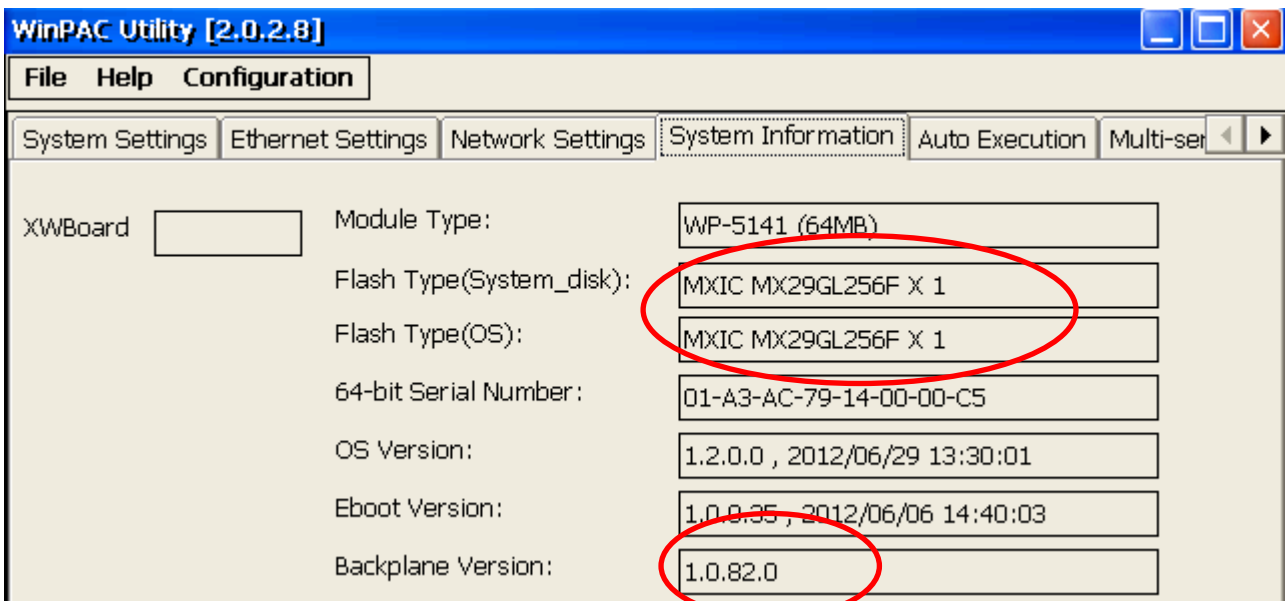


Table of Contents

WP-5000 OS 1.3.3.0 - Release Notes [04/27/2015]5
How to use the Power-on Password Protection?6

WP-5000 OS 1.3.3.0 - Release Notes [04/27/2015]

Abstract

This release fixes a problem of LAN1 not working when the “Automatically adjust clock for daylight saving” function is enabled; and adds new supports for the power-on password protection.

New Features

- Adds support for power on password protection.

Improvements and Bug Fixes

- Solved the problem of LAN1 not working when the “Automatically adjust clock for daylight saving” function is used.
- UDPSearch settings error.

Eboot Version

- No updates (V1.2.1.0, 09/27/2011).

Software and Hardware Compatibility

Software		Hardware		
OS	Eboot	V1.6	V2.21	V2.4
V1.3.3.0 [04/27/2014]	V1.2.1.0	Yes	Yes	Yes

WinPAC Utility and PACSDK

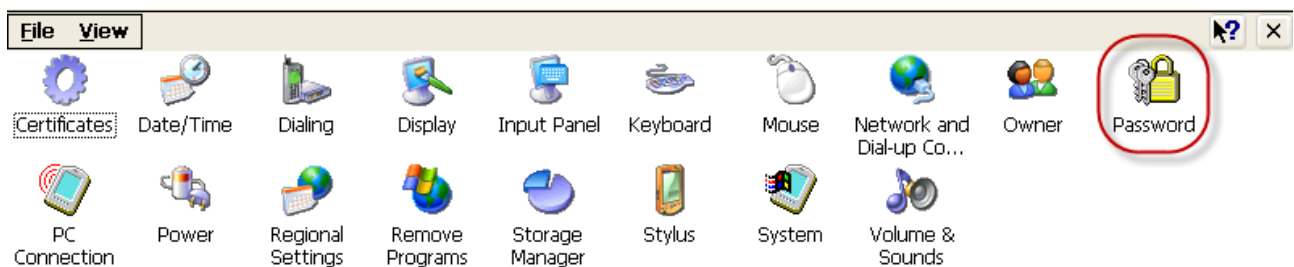
- PACSDK DLL Version 4.3.3.0 (Released on 12/04/2014)
- WinPAC Utility Version 2.1.0.6 (Released on 11/30/2013)

How to use the Power-on Password Protection?

The power-on password prevents anyone from starting the controller until they enter the correct password. With the power-on password enabled, the system is protected from unauthorized use.

The steps for setting and enabling the power-on password:

Step 1: Double-click on the icon of Password in the “Control Panel” window.



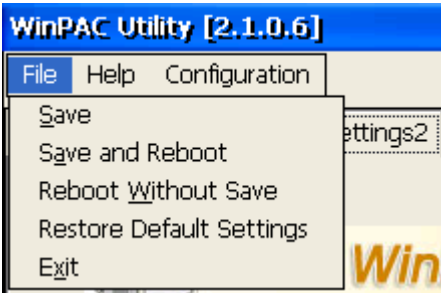
Step 2: Enter the same password in the Password and Confirm password fields, check the checkbox next to “Enable password protection at power-on”, and then click on the “OK” button.



Step 3: Execute the WinPAC Utility ◦



Step 4: Click on the “Save and Reboot” option in the “File” drop-down menu to save the settings and then reboot the controller.



Step 5: After reboot, the power-on password will be required to enter the operating system.

