

WinPAC-5000 Quick Start Guide

Version 1.0.2, August 2012

Congratulations!

Congratulations on purchasing Win PAC - the most popular automation solution for remote monitoring and control application. This Quick Start Guide will provide information needed to get started with WinPAC. Please also consult the User Manual for detailed information on the setup and use of Win PAC.

What's In the Box?

In addition to this guide, the package includes the following items:



Win PAC Module

(WP-5141/WP-5141-OD)



2 GB microSD card



Software Utility CD



Screw Driver

(1C016)
2.4 mm

Technical Support

- **WinPAC 5000 User Manual**

CD:\napdos\wp-5000_ce50\Document\

http://ftp.icpdas.com/pub/cd/winpac/napdos/wp-5000_ce50/document/

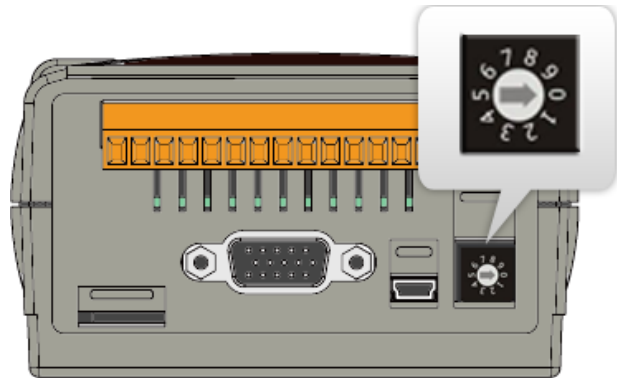
- **WinPAC 5000 Website**

http://www.icpdas.com/products/PAC/winpac/wp-5000_selection_guide.htm

1

Configuring the boot mode

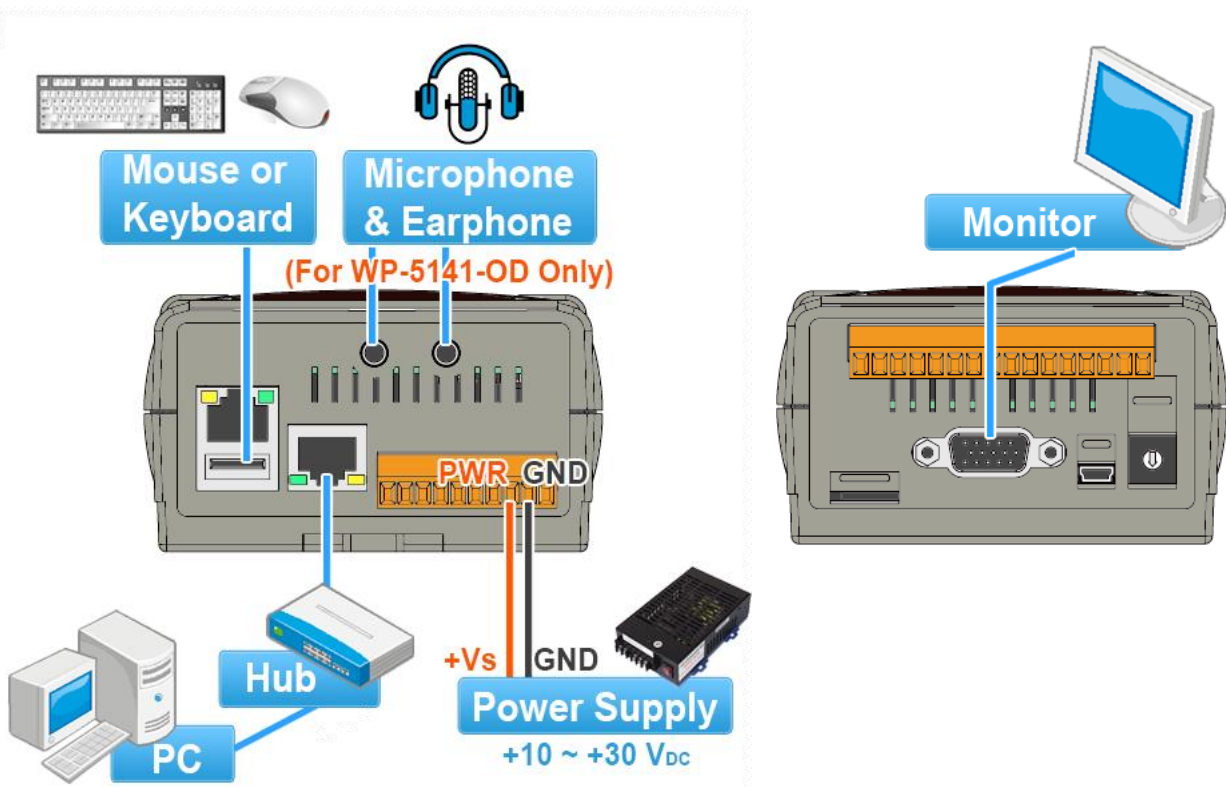
Before starting any installation, be sure that the switch is placed in the "0" position.



2

Connecting to PC, Monitor and Power Supply

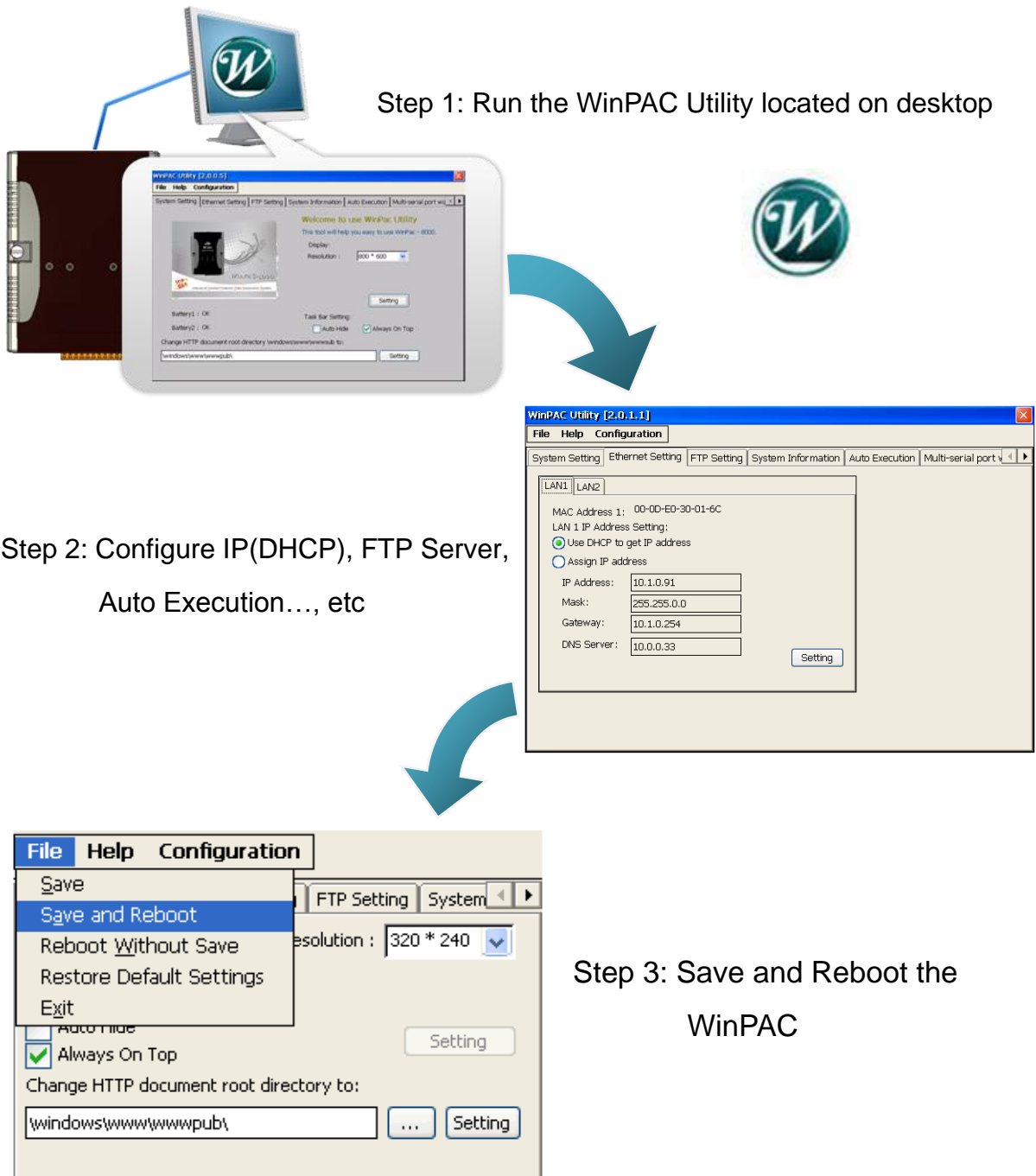
- Connect the mouse or keyboard to the USB port.
- Connect the microphone and earphone to the microphone-in and earphone-out (for WP-5141-OD only).
- Connect PC to the Ethernet port through a hub.
- Connect the power supply (10 ~ 30 V_{DC}) to PWR and GND terminals.
- Connect the monitor to the VGA port.



3

Changing the User Interface Language

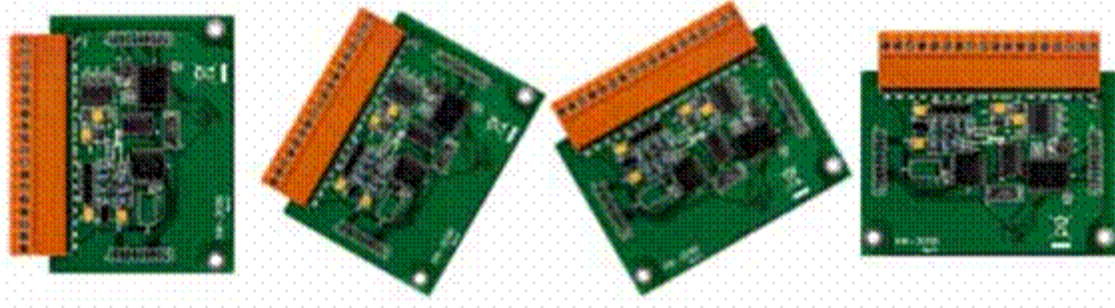
The WinPAC Utility is a toolkit used to quickly control and manage the WinPAC.



4

Inserting and Wiring the I/O Modules

The WinPAC expansion only supports XW-board series modules.



For more information about the XW-board expansion module, please refer to http://www.icpdas.com/products/PAC/up-5000/XW-board_Selection_Guide.htm

Additional Information

After you have finished configuring your module(s), you may start to develop your own applications. For detailed instructions and more applications, please refer to WinPAC-5000 User Manual.