

VP-413x CE 5.0 OS 2.4.2.0 Release Notes

Release Date: 11/08/2013

Key Features:


Features	Supported	Description
OS Language	Yes	VP-413x-EN : Multi-language including : <ul style="list-style-type: none">- English- German- Russian- French- Spanish- Italian- Korean VP-413x-SC : Simplified Chinese VP-413x-TC : Traditional Chinese
.NET Compact Framework 2.0 .NET Compact Framework 3.5	Yes	V2.0.7045 for Visual Studio .Net 2005/2008 V3.5.7283.0 for Visual Studio .Net 2008
SQL CE 3.5	Yes	SQL CE 3.5 (3.5.5386.0)
FTP Server	Yes	
HTTP Server	Yes	
Telnet	Yes	
Printer	Yes (PCL 6)	Support for HP Laser Jet printers with USB and Ethernet interfaces
Display Resolution	Yes	800* 600
Multiport Serial Communication Module 	Yes	Support modules: <ul style="list-style-type: none">I-8112iW (RS-232 *2)I-8114W (RS-232 *4)I-8114iW (RS-232 *4)I-8142iW (RS-485 *2)I-8144iW (RS-485 *4) The maximum number of ports can be extended is 12 (i.e., 3 slots * 4 ports per module = max. of 12 ports)

Table of Contents

VP-413x OS 2.4.2.0 - Release Notes	3
How to change to use non-Windows XP style skin GWES	4
How to set the ViewPAC to assign the DHCP IP address in LAN	5
How to create a VPN connection	7
How to connect to a VPN automatically at start-up	11

VP-413x OS 2.4.2.0 - Release Notes [11/08/2013]

Abstract

This release adds new supports for non-Windows XP-style GWES that allows the user to change the button color, DHCP allocator to assign the DHCP IP address in LAN, and PPTP/L2TP protocols to connect to a VPN as a dial-up client. It also fixes issues of where the CPU usage may rise to 100% caused by a USB disk was inserted and then removed more than eight times, the micro SD card was sometimes not mounted after booting, and adds a function of “Schmitt trigger” to improve the stability for the Ethernet connection after boot-up.

New Features

- Users now can change the GWES to non-Windows XP style skin and then change the button color.
- Adds support for DHCP allocator to assign the DHCP IP address in LAN.
- Adds support for PPTP/L2TP dial-up access, which can be used to connect to a VPN.

Improvements and Bug Fixes

- Fixed an issue in the USB driver that caused the CPU usage to rise to 100% when a user inserted and then removed a USB Disk more than 8 times.
- Modified the driver for the micro SD card to solve a problem where the micro SD card was sometimes was not mounted after booting.
- Added a new function “Schmitt trigger” to improve the stability for Ethernet connection after boot-up.
- Fixed a problem that caused the LCD to emit a high frequency sound when the VP-413x waked up from system idle.

Eboot 1.0.1.0 [11/08/2013]

- Enabled the “Schmitt trigger” function to improve the Ethernet driver and prevent a problem where the user could not use Eshell to update the OS image file.

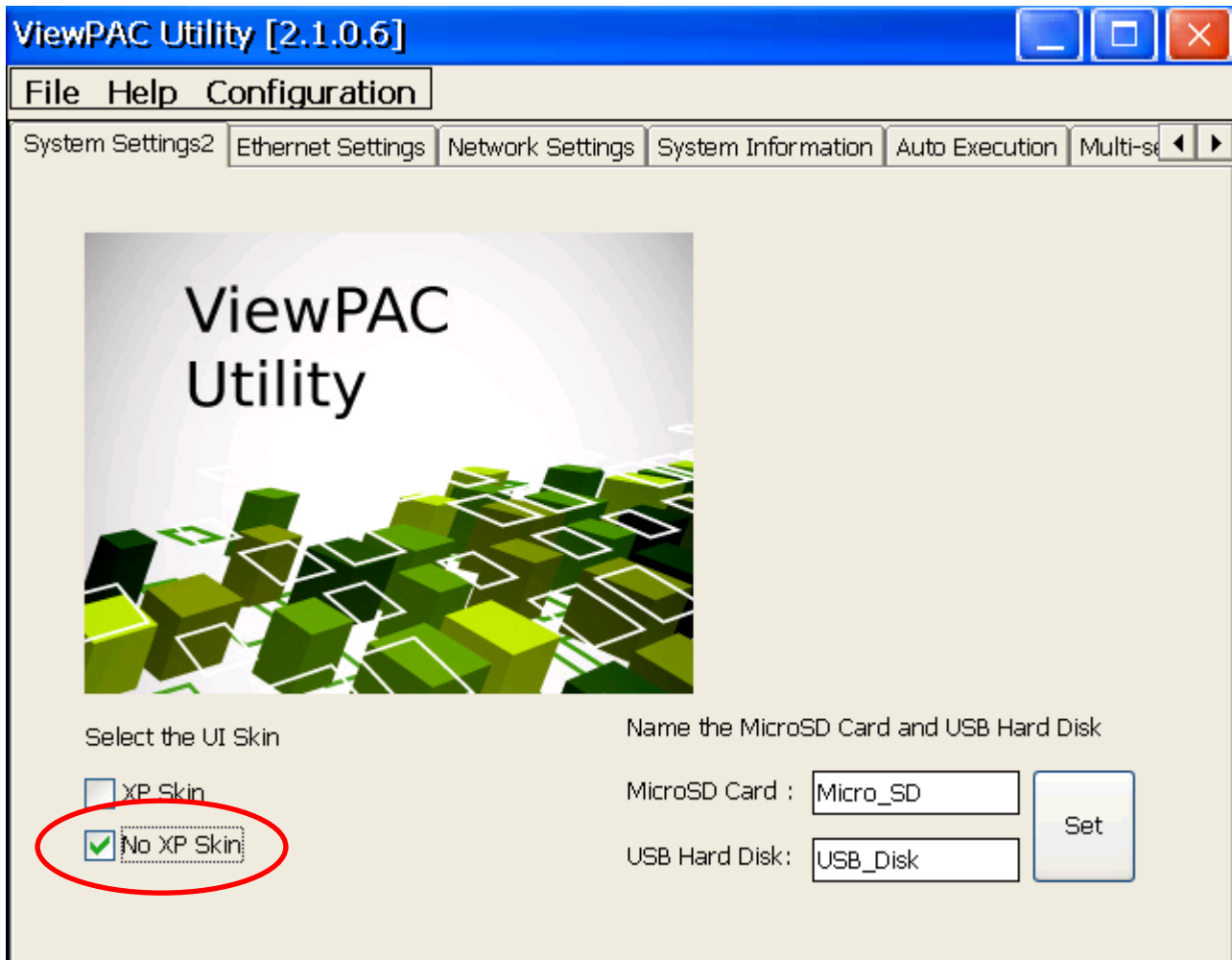
WinPAC Utility and WinPAC SDK

- PACSDK DLL V.4.2.3.8 (Released on: 10/30/2013)
- ViewPAC Utility V.2.1.0.6 (Released on: 11/30/2013)

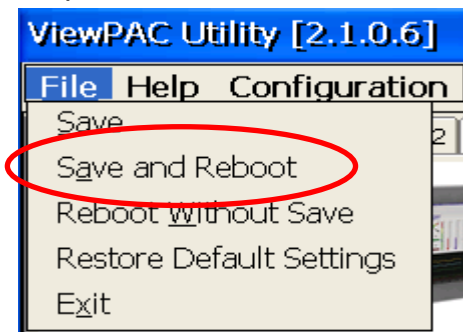
How to change to non-Windows XP style skin GWES

The GWES for the Windows CE5.0 uses a Windows style XP skin that does not allow the user to change the color of the buttons in the programs. If you wish to change the color of the button, perform the following steps:

Step 1: Execute the ViewPAC Utility, and check the “No XP Skin” checkbox on the System Settings2 tab.



Step 2: Select the “Save and Reboot” option from the “File” menu.



How to set the ViewPAC to assign DHCP IP address in LAN

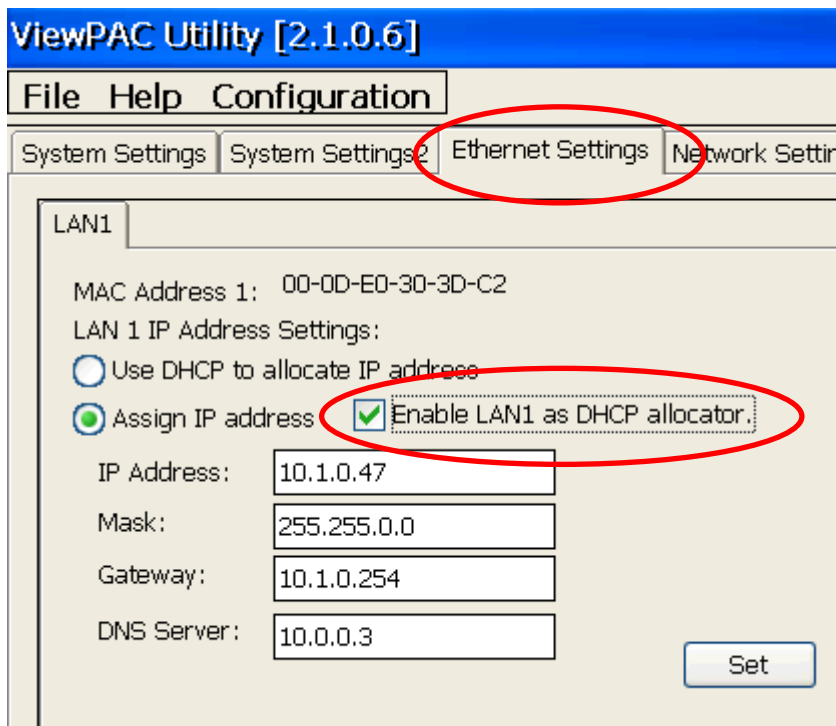
Although Windows CE does not support the services required to operate a full DHCP server, it does support a subset of these services called the DHCP allocator. Windows CE implements the DHCP allocator as part of the ipnat module (Ipnat.dll). Typically, the DHCP allocator is contained in a gateway device. The gateway always checks if another DHCP Server is available. A full DHCP Server always supercedes the gateway DHCP allocator.

Note: More information of DHCP allocator is at:

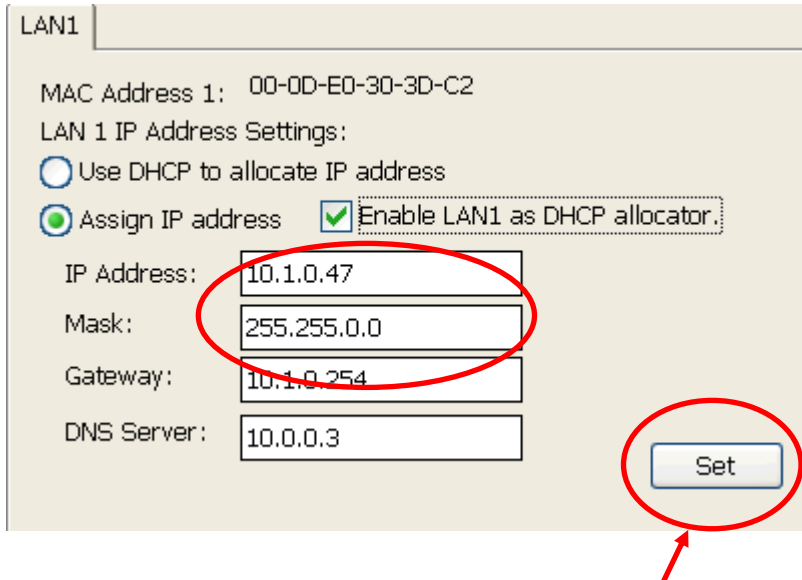
<http://msdn.microsoft.com/en-us/library/ms881700.aspx>

If your LAN network does not contain a DHCP server, you can set the ViewPAC to allocate a DHCP IP address to each device that sends a DHCP request by performing the following steps:

Step 1: Execute the ViewPAC Utility, and check the “Enable LAN1 as DHCP allocator” checkbox on the Ethernet Settings tab.

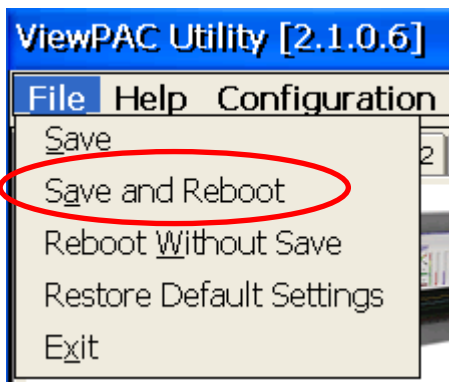


Step 2: Set a static IP address and a Mask for LAN1. The ViewPAC will then allocate the IP address to each device (i.e., if you set the Mask to 255.255.0.0, the ViewPAC will allocate the IP address 10.1.x.x. If you set the Mask to 255.255.255.0, the ViewPAC will allocate the IP address 10.1.0.x, where x=0 to 254).



Step 3: Click the Set button to set the new configuration.

Step 4: Select the "Save and Reboot" option from the "File" menu to save the settings and reboot the ViewPAC.



How to create a VPN connection

To create a VPN connection, perform the follows.

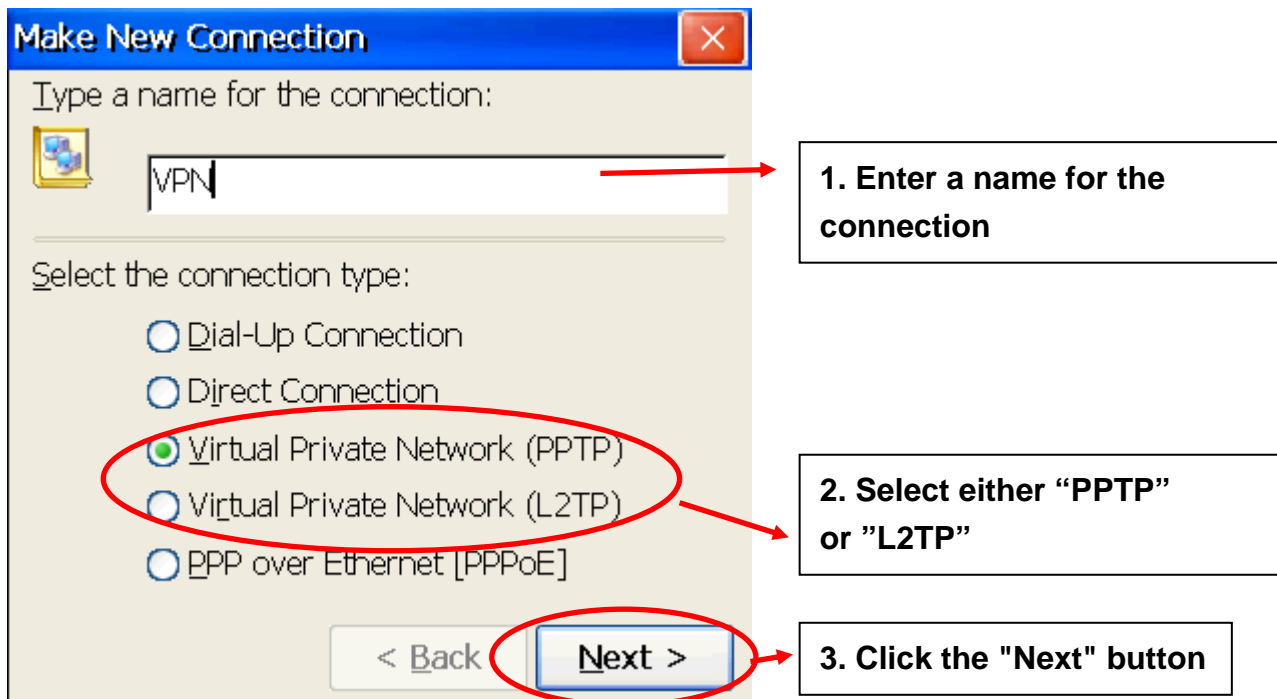
Step 1: Go to "control panel" and then double-click the icon for "Network and Dial-up connections".



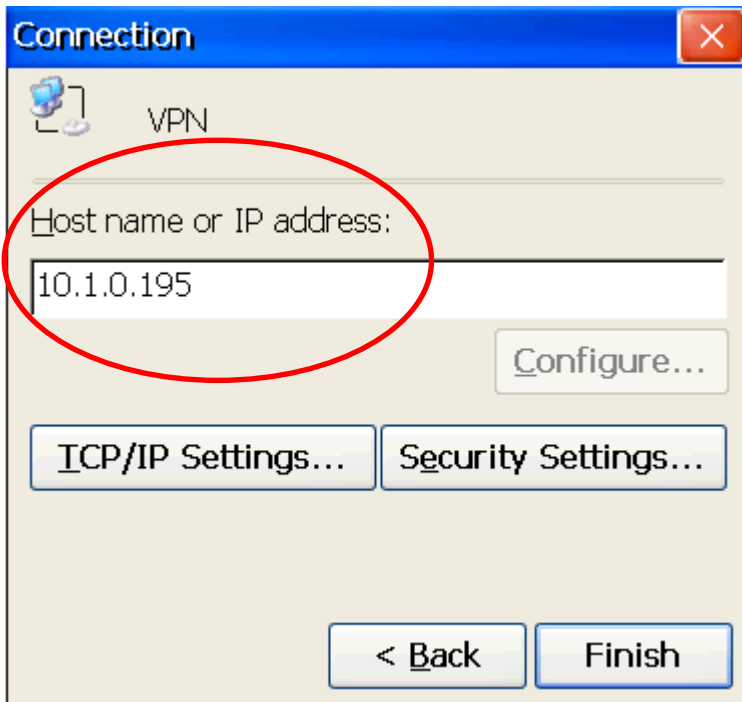
Step 2: Double-click the icon for "Make New Connection".



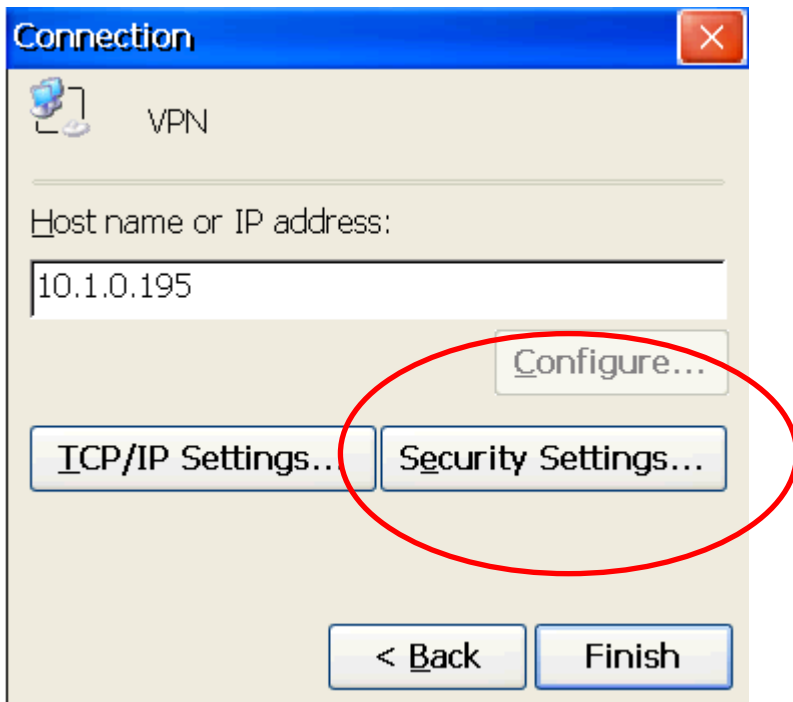
Step 3: In the "Make New Connection" dialog box, enter a name for the connection and select either the "PPTP" or the "L2TP" option as the connection type, and then click the "Next" button.



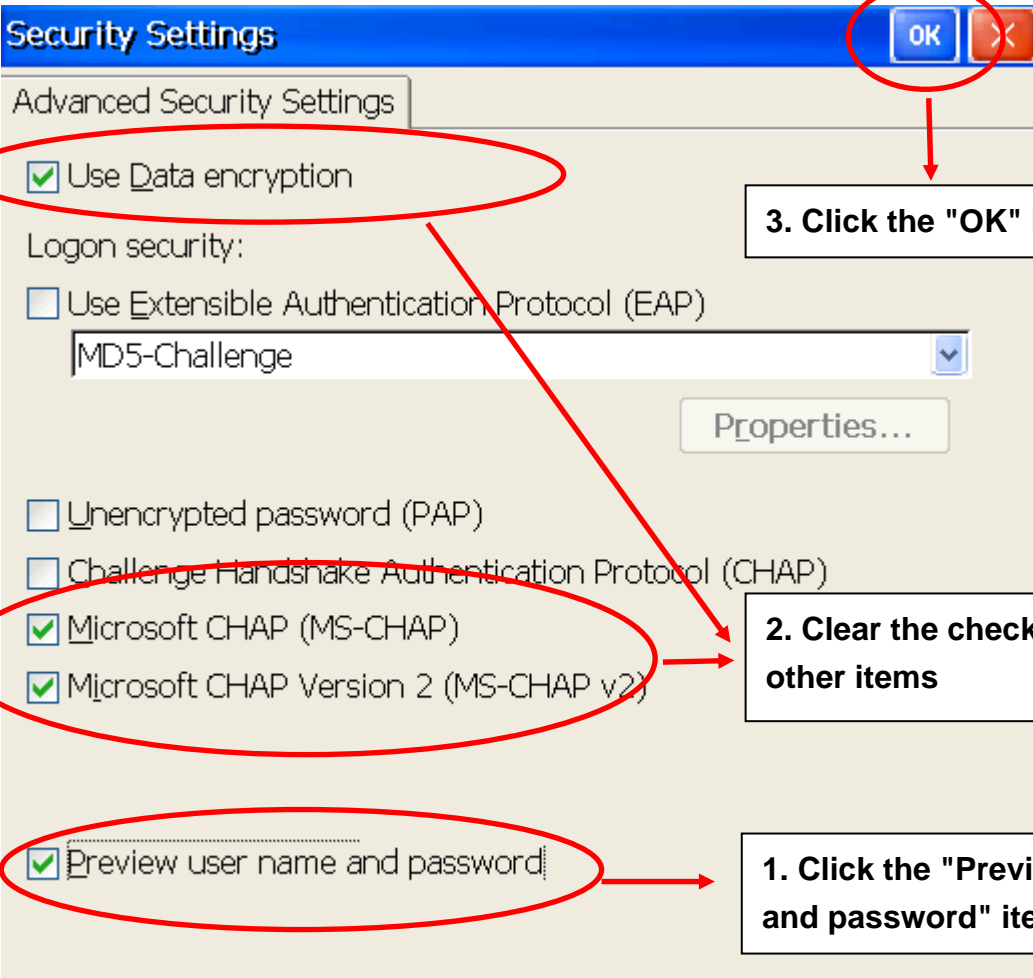
Step 4: Enter the host name or the IP address for the VPN server.



Step 5: Click the "Security Settings..." button to open the "Security Settings" dialog box.



Step 6: In the "Security Settings" dialog box, check the "Preview user name and password" checkbox item, and clear the checkboxes for all other items, and then click the "OK" button.



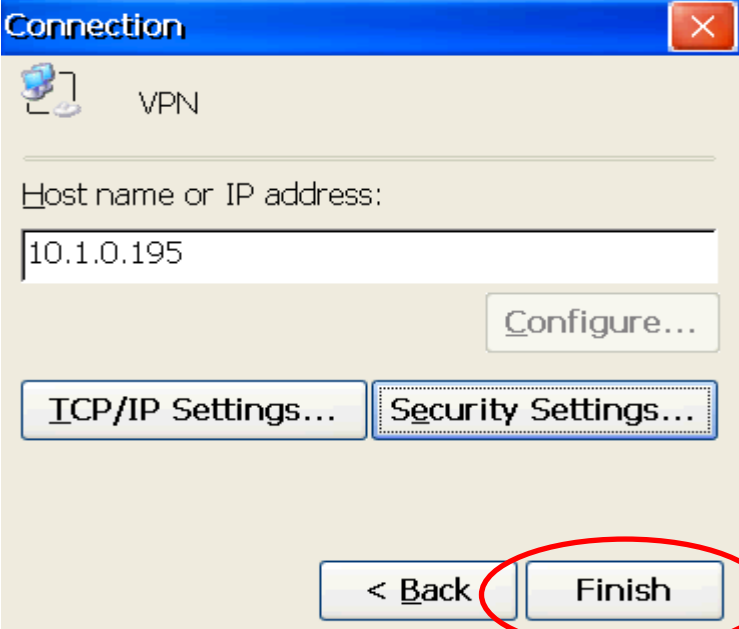
The screenshot shows the "Security Settings" dialog box with the following items circled in red:

- Use Data encryption
- Microsoft CHAP (MS-CHAP)
- Microsoft CHAP Version 2 (MS-CHAP v2)
- Preview user name and password
- The "OK" button in the top right corner.

Annotations with arrows point to these items:

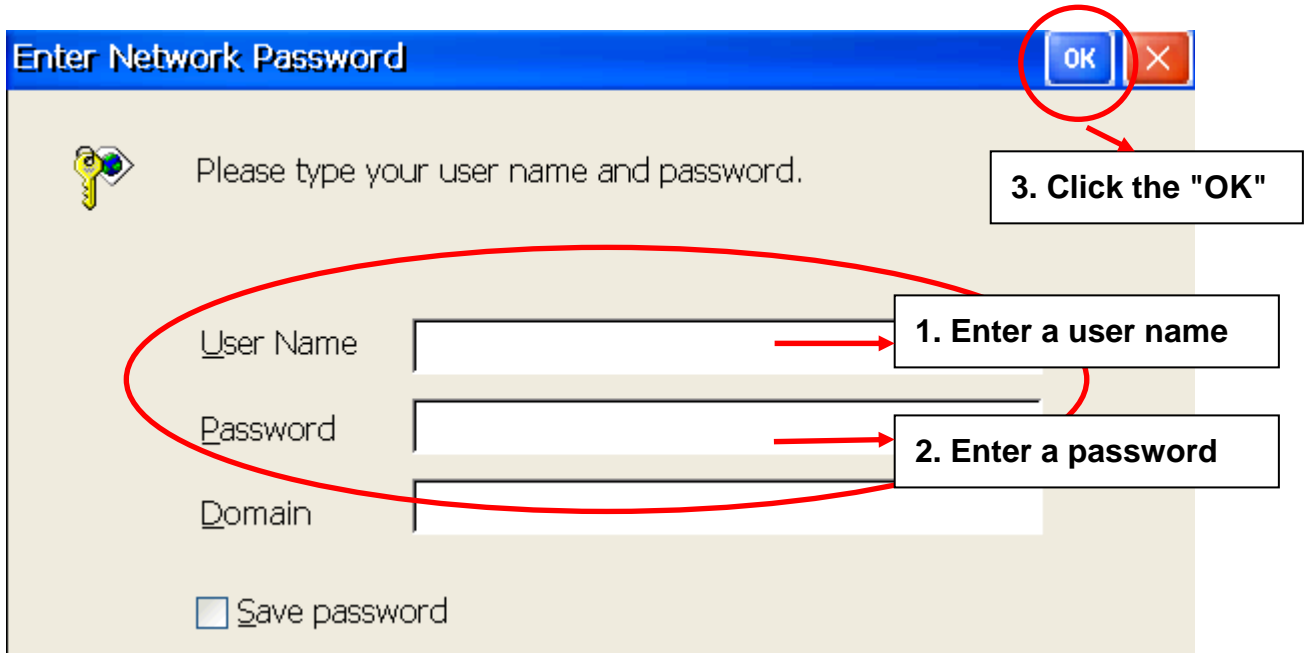
- Annotation 1: "1. Click the 'Preview user name and password' item." points to the "Preview user name and password" checkbox.
- Annotation 2: "2. Clear the checkboxes for all other items" points to the three checked checkboxes.
- Annotation 3: "3. Click the 'OK' button" points to the "OK" button.

Step 7: Click the "Finish" button to save the settings.

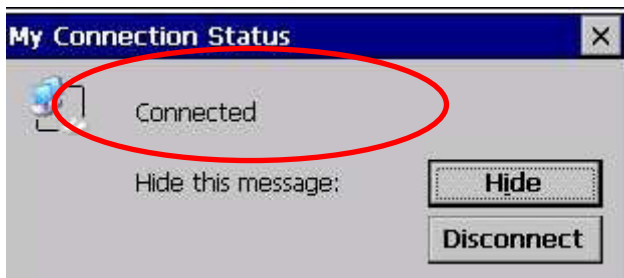


The screenshot shows the "Connection" dialog box for a VPN. The "Host name or IP address" field contains "10.1.0.195". At the bottom, the "< Back" and "Finish" buttons are circled in red.

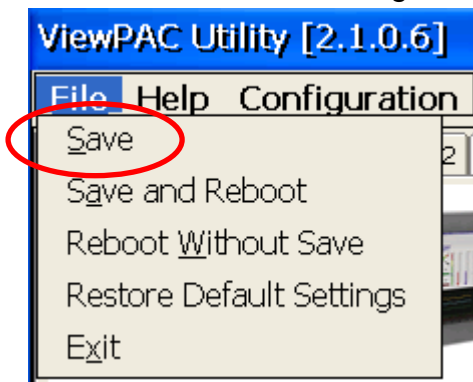
Step 8: In the Network settings window, double-click the icon for the new "VPN" connection and then enter a user name and password in the login window. Click the "OK" button to establish a connection.



Step 9: A status window will be displayed with the message "Connected", indicating that the connection was successfully established.



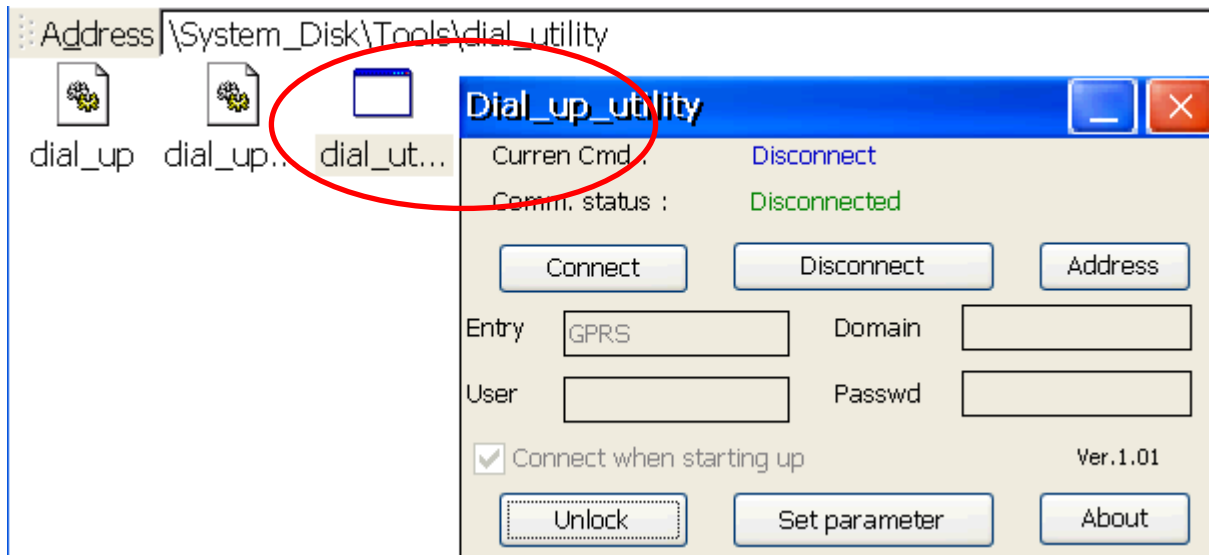
Step 10: Execute the ViewPAC Utility and then click the "Save" option from the "File" menu to save the settings.



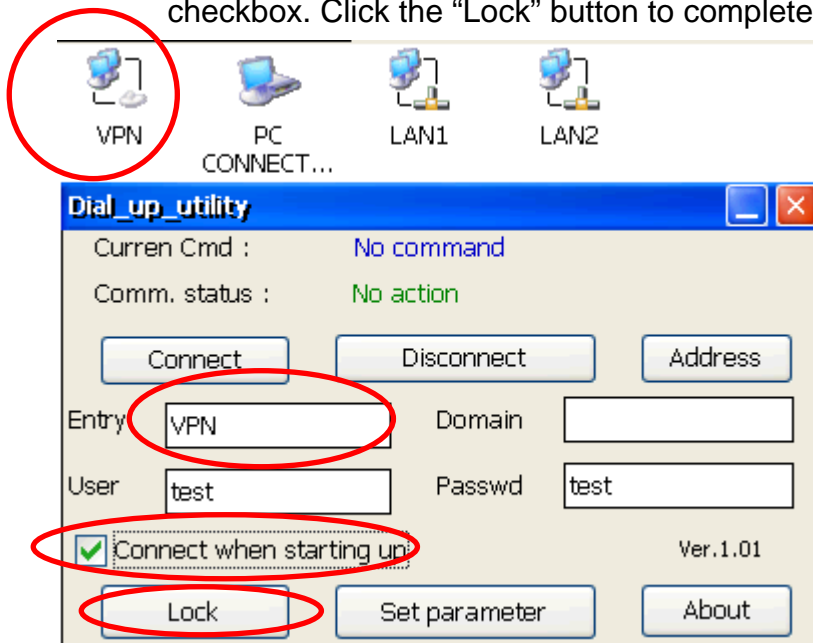
How to connect to a VPN automatically at start-up

The Dial_utility is a program that can be used to automatically connect to a VPN, and users can use VB.net, C# or C programs to send a command to instruct it to connect or interrupt the connection. It can also be used to retrieve details related to the connection status and the command status.

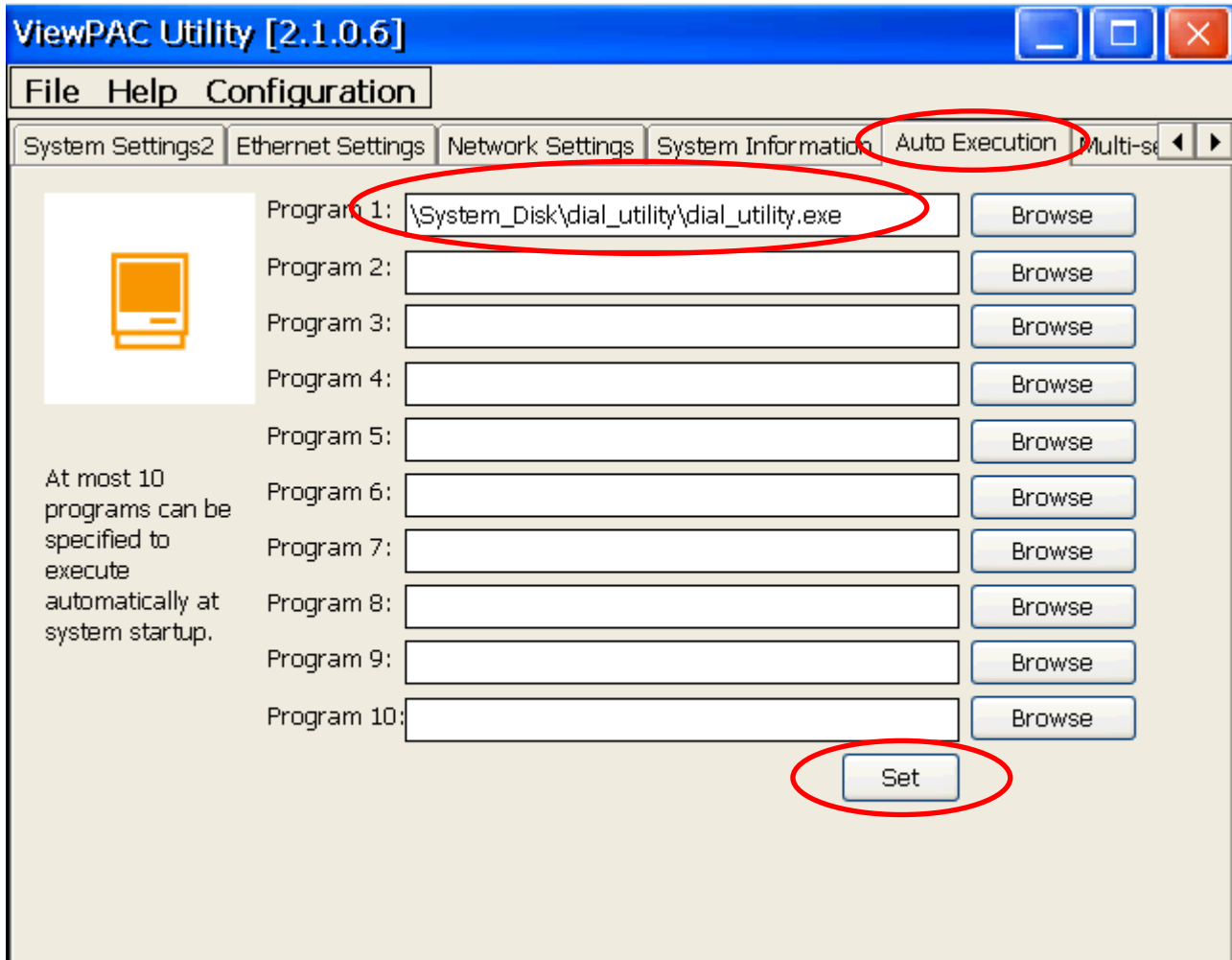
Step 1: In the \System_disk\Tools\dial_utility folder, execute dial_utility.exe program.



Step 2: Click the "Unlock" button and then enter the name for VPN connection, the User ID, and the password in the textbox and check the "Connect when starting up" checkbox. Click the "Lock" button to complete settings.

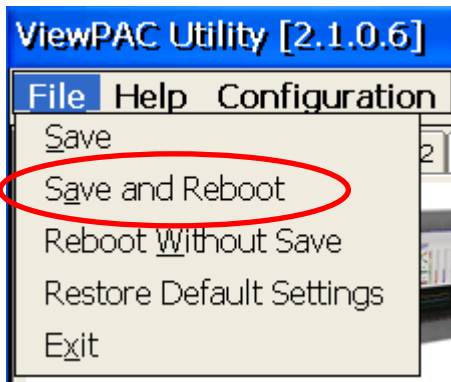


Step 3: Execute the ViewPAC Utility, and then click the “Auto Execution tab”. Set the dial_utility.exe to be automatically executed after booting by clicking the “Browse” button and selecting the file from the “dial_utility” folder.



Step 4: Click the “Set” button to complete the settings.

Step 5: Click the “Save” option from the “File” menu.



Next time when the ViewPAC reboots, the dial_utility will auto connect to the VPN.