



Features

- PXA270, 520 MHz CPU
- Windows CE 5.0
- Hard Real-Time Capability
- 3 I/O Slots
- IP65 Compliant Front Panel
- 10.4" TFT LCD
- Support eLogger HMI
- Audio with Earphone-Out
- Operating Temperature: -20 ~ +70°C



Introduction

The VP-4131 is a Windows CE 5.0 based PAC that combines a color graphic display and I/O expansion slots into a single unit. It is equipped with a PXA270 CPU (520 MHz), a variety of connectivity options (USB, Ethernet, RS-232/485), 3 I/O slots, 10.4" TFT LCD and a rubber keypad. The benefits of running Windows CE 5.0 on ViewPAC include hard real-time capability, small core size, fast boot speed, interrupt handling at a deeper level and achievable deterministic control. The VP-4131 is also capable of running PC-based control software such as Visual Basic .NET and Visual C#.

Compared to regular HMI + PLC solutions, the VP-4131 reduces overall system cost and space, and provides all the best features of HMIs and PLCs.

Windows CE5



Windows CE 5 is a compact and real-time OS used to quickly create time critical and high performance applications. Using Windows CE 5 gives an ability to run PC-based control software such as Visual Basic .NET, Virtual C#, SCADA software, SoftPLC.

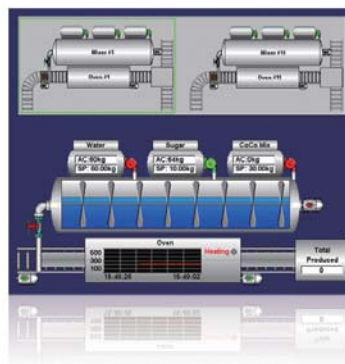
- ★ FTP Server
- ★ Web Server
- ★ SQL Compact Edition 3.5
- ★ .NET Compact Framework 3.5
- ★ Virtual CE Pro (VCEP)
- ★ OPC Server (NAPOPC_CE5 DA Server)
- ★ Soft PLC solution: WP-8xx7, WP-5xx7 and VP-25W7 (ISaGRAF inside)
- ★ SCADA solution: WP-8xx9, WP-5xx9 and VP-25W9 (InduSoft inside)

Applications

Machine Automation



SCADA System



Factory Automation



Specifications

Models	VP-4131
System Software	
OS	Windows CE 5.0
.Net Compact Framework	3.5
Embedded Service	FTP server, Web server (supports VB script, JAVA script), Embedded SQL server
SDK Provided	Dll for eVC, Dll for Visual Studio.Net 2005/2008
Multilanguage Support	English, German, French, Spanish, Russian, Italian, Korean, Simplified Chinese, Traditional Chinese
CPU Module	
CPU	PXA270, 520 MHz
SDRAM	128 MB
Dual Battery Backup SRAM	512 KB; data valid up to 5 years
Flash	128 MB
EEPROM	16 KB
Expansion Flash Memory	microSD socket with one 4 GB microSD card (support up to 32 GB microSDHC card)
RTC (Real Time Clock)	Provide second, minute, hour, date, day of week, month, year
64-bit Hardware Serial Number	Yes, for Software Copy Protection
Dual Watchdog Timers	Yes (0.8 second)
Rotary Switch	Yes (0 ~ 9)
VGA & Communication Ports	
Ethernet	RJ-45 x 1, 10/100 Base-TX (Auto-negotiating, Auto MDI/MDI-X, LED indicators)
USB 1.1 (host)	2
USB 1.1 (client)	1
COM 0	Internal communication with the high profile I-87K series modules in slots
COM 1	-
COM 2	RS-485 (Data+, Data-) with internal self-tuner ASIC; 2500 Vdc isolated
COM 3	RS-232 (Rx/D, Tx/D, CTS, RTS, DSR, DTR, CD, RI and GND); Non-isolated
MMI (Man Machine Interface)	
LCD	10.4" TFT (Resolution 800 x 600)
Touch Panel	Yes
Rubber Keypad	-
Audio	Earphone-Out
LED Indicators	2 LEDs (PWR, RUN)
I/O Expansion Slots	
Slot Number	3
Mechanical	
Dimensions (W x H x D)	293 mm x 231 mm x 129 mm
Installation	Panel Mounting
Ingress Protection	Front panel: IP65
Environmental	
Operating Temperature	-20 ~ +70°C
Storage Temperature	-30 ~ +80°C
Ambient Relative Humidity	10 ~ 90% RH (non-condensing)
Power	
Input Range	+10 ~ +30 Vdc
Isolation	1 kV
Capacity	12.5 W
Consumption	8.5 W

Ordering Information

VP-4131-EN CR	Standard ViewPAC with 10.4" LCD and 3 I/O slots (Multilanguage Version of OS) (RoHS)
VP-4131-TC CR	Standard ViewPAC with 10.4" LCD and 3 I/O slots (Traditional Chinese of OS) (RoHS)
VP-4131-SC CR	Standard ViewPAC with 10.4" LCD and 3 I/O slots (Simplified Chinese of OS) (RoHS)

Accessories

DP-660	24 Vdc/2.5 A, 60 W and 5 Vdc/0.5 A, 2.5 W Power Supply with DIN-Rail Mounting
MDR-60-24 CR	24 Vdc/2.5 A, 60 W Power Supply with DIN-Rail Mounting (RoHS)