

# VP-25Wx Release Notes

## What OS version is applicable to which hardware version?

As older typed of chips are phased out, earlier OS versions will no longer be applicable to the new hardware. However, the latest OS version will be suitable for all hardware versions, so it is recommended that you install the appropriate OS versions to match the hardware, otherwise you may have problem with your VP-25Wx.

The table below illustrates which OS version is applicable to which hardware:

<b>Hardware Version</b>	V1.5 or earlier	V1.7	V1.9 or later
<b>Eboot/OS Version</b>			
Eboot (Ver. 1.0.1.1 and earlier)	Ok	N/A	N/A
Eboot (Ver. 1.1.0.1 and later)	Ok	Ok	Ok
OS (Ver. 1.1.0.1 and earlier)	Ok	N/A	N/A
OS (Ver. 2.0.0.2 and earlier)	Ok	Ok	N/A
OS (Ver. 2.1.0.0 and later)	Ok	(Note5)	Ok

### Note:

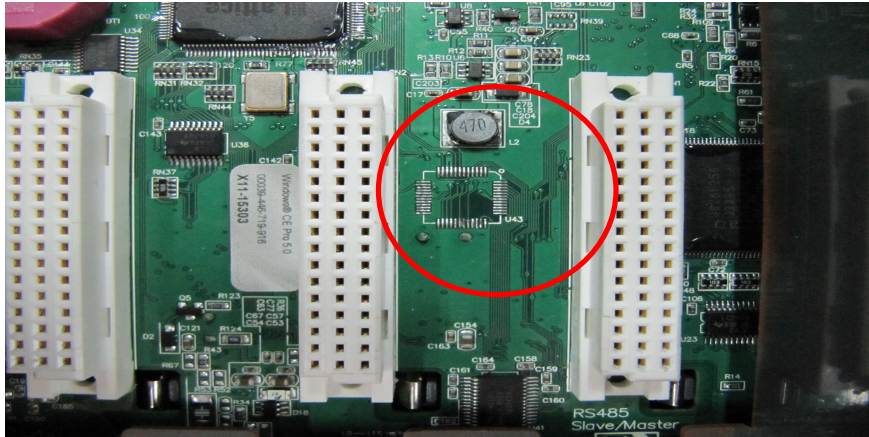
1. V1.5 hardware or earlier is equipped with the **Intel J3 Flash Chip (95ns)**
2. V1.7 hardware is equipped with the **Samsung K8 Flash Chip (70ns).**
3. The Touch/Audio chip on V1.7 hardware or earlier is equipped with the **USB1400** chip.
4. The Touch and audio chips on V1.9 hardware or later are equipped with the **PM6000** and the **AIC33** chips.
5. Booting ok, touch panel doesn't work, audio doesn't work.

# VP-25Wx Release Notes

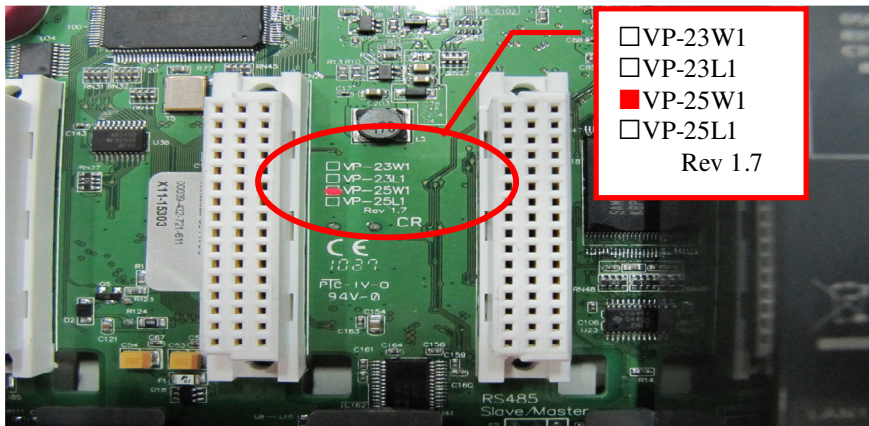
## How to determine the hardware version

The version number of the hardware can be found on the back of the ViewPAC, as illustrated below.

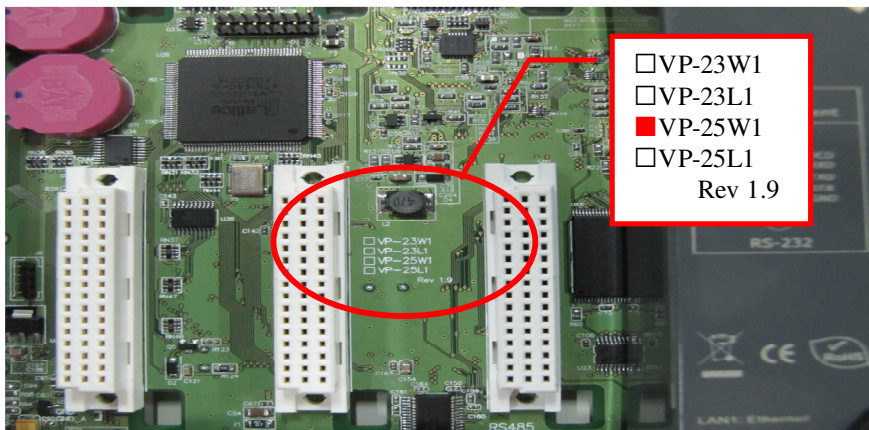
V1.5



V1.7



V1.9



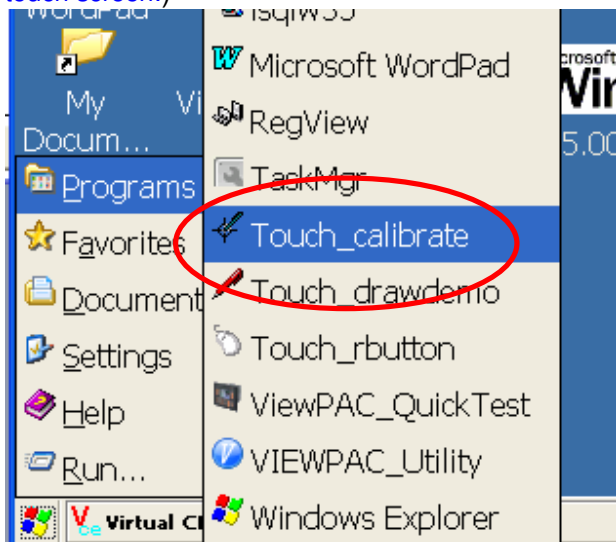
# VP-25Wx Release Notes

## How to use the new touch calibration

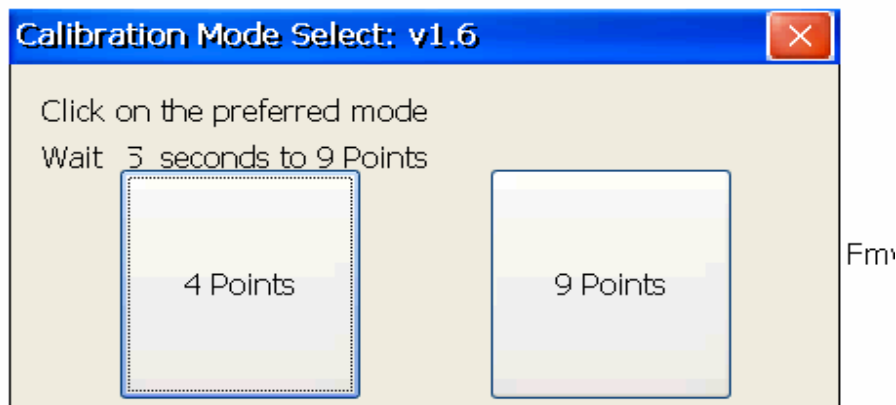
Because the UCB1400 touch chip has been phased out, the chip in the VP-25Wx has been replaced with a PM6000 touch chip.

To calibrate the new touch panel, perform the following steps:

**Step 1:** Click Start->Programs->Touch\_calibrate (If the [Touch\\_calibrate.exe utility doesn't execute](#), it means that the hardware is old. Please refer to section 8 in [ViewPAC\\_25w1\\_quick\\_start\\_guide\\_english\\_v1.0.2.pdf](#) file for details of recalibrate the touch screen.)



**Step 2:** Click the 4 points or 9 points Calibration button.



# VP-25Wx Release Notes

**Step 3:** Touch the “⊕” icons on the monitor to perform the calibration process



PenMount Calibration Program. Driver: 2.13, Firmware: 6000

Please touch the red point.

# VP-25Wx 注意事項

## 哪個版本的硬體需配合哪個版本之後的 OS?

因零件汰換，對於新版的硬體，舊版的 OS 已不適用，新版的 OS 則可向下相容，請依照表格安裝對應的 OS，否則將會出現不可預期的問題。

以下表格，列出各個硬體版本適合搭配的 OS 及 Eboot 版本

<b>Hardware Version</b>	<b>V1.5 or earlier</b>	<b>V1.7</b>	<b>V1.9 or later</b>
<b>Eboot/OS Version</b>			
Eboot (Ver. 1.0.1.1 and earlier)	Ok	N/A	N/A
Eboot (Ver. 1.1.0.1 and later)	Ok	Ok	Ok
OS (Ver. 1.1.0.1 and earlier)	Ok	N/A	N/A
OS (Ver. 2.0.0.2 and earlier)	Ok	Ok	N/A
OS (Ver. 2.1.0.0 and later)	Ok	(Note5)	Ok

Note:

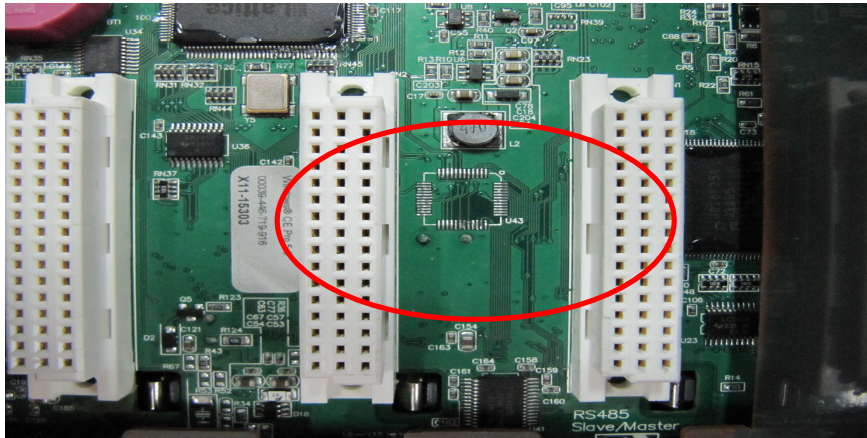
1. V1.5 及更早版本的硬體其 Flash 是搭配 **Intel J3 Flash Chip** (95ns)
2. V1.7 硬體其 Flash 是搭配 **Samsung K8 Flash Chip** (70ns).
3. V1.7 及更早版本的硬體其 Touch 及 Audio 晶片是使用 **USB1400**
4. V1.9 及以後版本的硬體 其 Touch 及 Audio 晶片各是使用 **PM6000** 及 **AIC33**
5. 可以開機，但觸控螢幕及音效無作用。

# VP-25Wx 注意事項

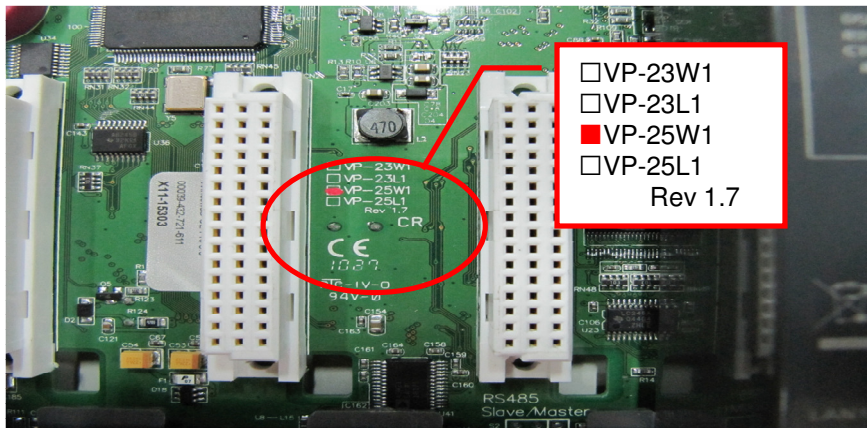
如何辨識新硬體版本？

透過查看 ViewPAC 後面的硬體版本號碼

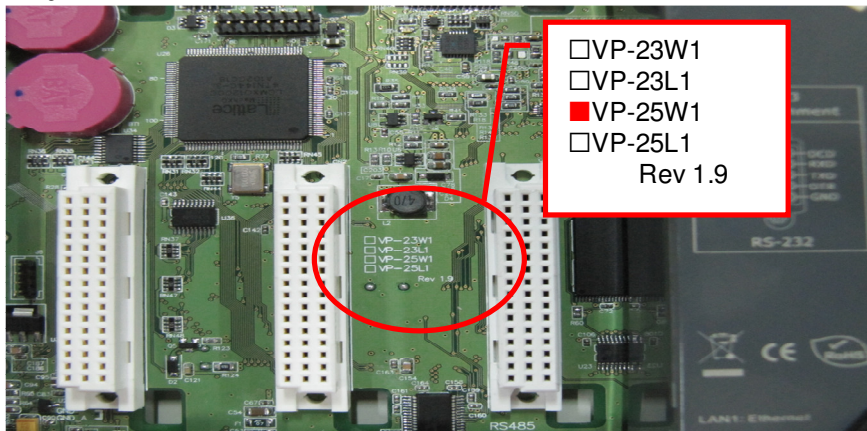
V1.5



V1.7



V1.9

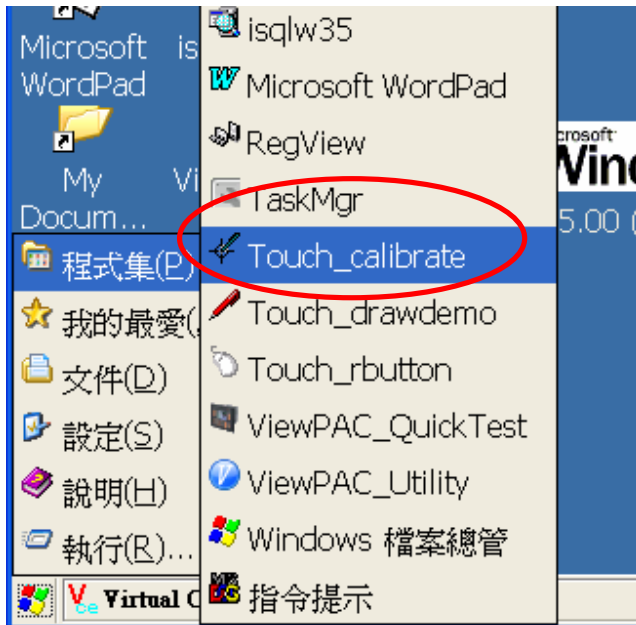


# VP-25Wx 注意事項

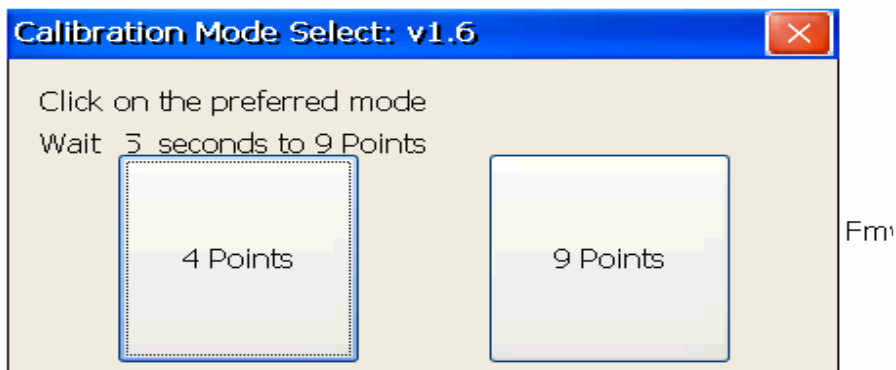
## 如何使用硬體 V1.9 以及以後版本的觸控校正

由於觸控晶片 UCB1400 停產，因此更換觸控晶片為 PM6000，以下為 PM6000 觸控晶片的校正使用方法：

**Step 1:** Start->程式集->Touch\_calibrate(如果校正程式無法執行，表示為舊版硬體，請參考 [ViewPAC\\_25w1\\_quick\\_start\\_guide\\_chinese\\_v1.0.2.pdf](#) 文件中的第八項，進行觸控校正)



**Step 2:** 選擇 4 點校正或是 9 點校正



# VP-25Wx 注意事項

**Step 3:** 依序點擊圓點中心，完成校正過程



PenMount Calibration Program. Driver: 2.13, Firmware: 6000  
Please touch the red point.