


VP-25Wx OS V.2.4.2.0 Release Notes

Release Date: 07/08/2013

Key Features:

Features	Supported	Description
OS Language	Yes	VP-25Wx-EN: Multi-language including: <ul style="list-style-type: none"> - English - German - Russian - French - Spanish - Italian - Korean VP-25Wx-SC: Simplified Chinese VP-25Wx-TC: Traditional Chinese
.NET Compact Framework 2.0 .NET Compact Framework 3.5	Yes	V2.0.7045 for Visual Studio .Net 2005/2008 V3.5.7283.0 for Visual Studio .Net 2008
SQL CE 3.5	Yes	SQL CE 3.5 (3.5.5386.0)
FTP Server	Yes	
HTTP Server	Yes	
Telnet	Yes	
Printer	Yes (PCL 6)	Support for HP Laser Jet printers with USB and Ethernet interfaces
Display Resolution	Yes	640 * 480
Multiport Serial Communication Module  The maximum number of ports that can be used is 12. (i.e., 3 slots * 4 ports per module = max. of 12 ports)	Yes	Supported modules: I-8112iW (RS-232 *2) I-8114W (RS-232 *4) I-8114iW (RS-232 *4) I-8142iW (RS-485 *2) I-8144iW (RS-485 *4) I-8212W, I-8213W (GPS) (Industrial Tri-band 2G module) I-8212W-3GWA, I-8213W-3GWA (GPS) (Industrial Tri-band 3G module)

Software and Hardware Compatibility

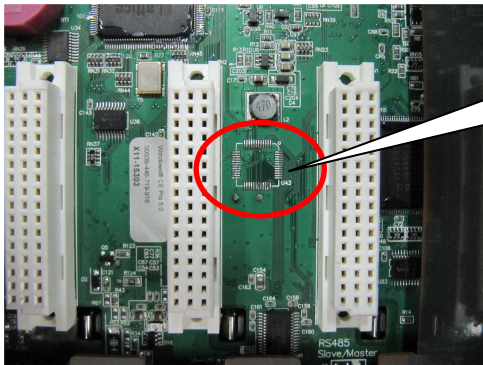
Software		Hardware Version			
OS	Eboot	PCB V1.5	PCB V1.7	PCB V2.0	PCB V2.30
V.2.4.2.0 [07/08/2013]	V.1.2.1.0	Yes	Yes	Yes	Yes
V.2.4.1.0 [11/21/2012]	V.1.2.0.0	Yes	Yes	Yes	Yes
V.2.4.0.0 [11/21/2012]	V.1.2.0.0	Yes	Yes	Yes	Yes
V.2.3.0.0 [09/13/2012]	V.1.2.0.0	Yes	Yes	Yes	(* Note 1)
V.2.2.0.0 [04/06/2012]	V.1.2.0.0	Yes	Yes	Yes	Yes
V.2.1.0.0 [05/25/2011]	V.1.1.0.3	Yes	(* Note 2)	Yes	-
V.2.0.0.2 [11/18/2010]	V.1.1.0.3	Yes	Yes	-	-
V.2.0.0.1 [09/15/2010]	V.1.1.0.3	Yes	Yes	-	-
V.2.0.0.0 [06/30/2010]	V.1.1.0.3	Yes	Yes	-	-
V.1.1.0.1 [04/12/2010]	V.1.1.0.3	Yes	-	-	-
V.1.1.0.0 [12/01/2009]	V.1.0.1.1	Yes	-	-	-

Note 1: OS V.2.3.0.0 is not able to operate the System_disk correctly on hardware v2.30.

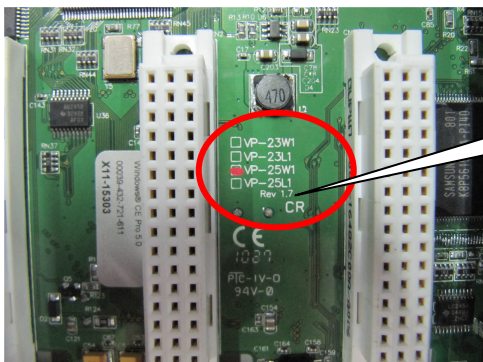
Note 2: OS V.2.1.0.0 works well on hardware v1.7 without support for touch panels and audio.

Note 3: The hardware version number can be found on the PCB, as per the description below:

Determining the hardware version



No revision mark for PCB v1.5



Revision mark for PCB v1.7 and later

Table of Contents

VP-25Wx OS V.2.4.2.0 Release Notes [07/08/2013]..... 4

VP-25Wx OS V.2.4.2.0 Release Notes [07/08/2013]

This release fixed a bug that the CPU usage would rise to 100% after a user inserted a USB disk and then removed it over eight times. The new function “Schmitt trigger” has been added to improve the Ethernet connection stability after boot-up. The Eboot version 1.2.1.0 is new release to enable “Schmitt trigger” for the Ethernet connection stability, too.

Improvements and Bug Fixes

- Fixed an issue in the USB driver that the CPU usage rises to 100% when the user inserted and then removed a USB Disk over 8 times.
- Enabled the “Schmitt trigger” to improve the Ethernet driver and prevent problems of Ethernet connections after boot-up.

Eboot Version 1.2.1.0 [07/09/2013]

- Enabled the “Schmitt trigger” to improve the Ethernet driver and prevent a problem where the user could not use Eshell to update the OS image file.

Software and Hardware Compatibility

Software		Hardware			
OS	Eboot	PCB V1.5	PCB V1.7	PCB V2.0	PCB V2.30
V.2.4.2.0	V.1.2.1.0	Yes	Yes	Yes	Yes

ViewPAC Utility and WinPAC SDK

- PACSDK DLL Version 4.2.3.7 (Released on 05/30/2013)
- ViewPAC Utility Version 2.1.0.5 (Released on 04/11/2013)