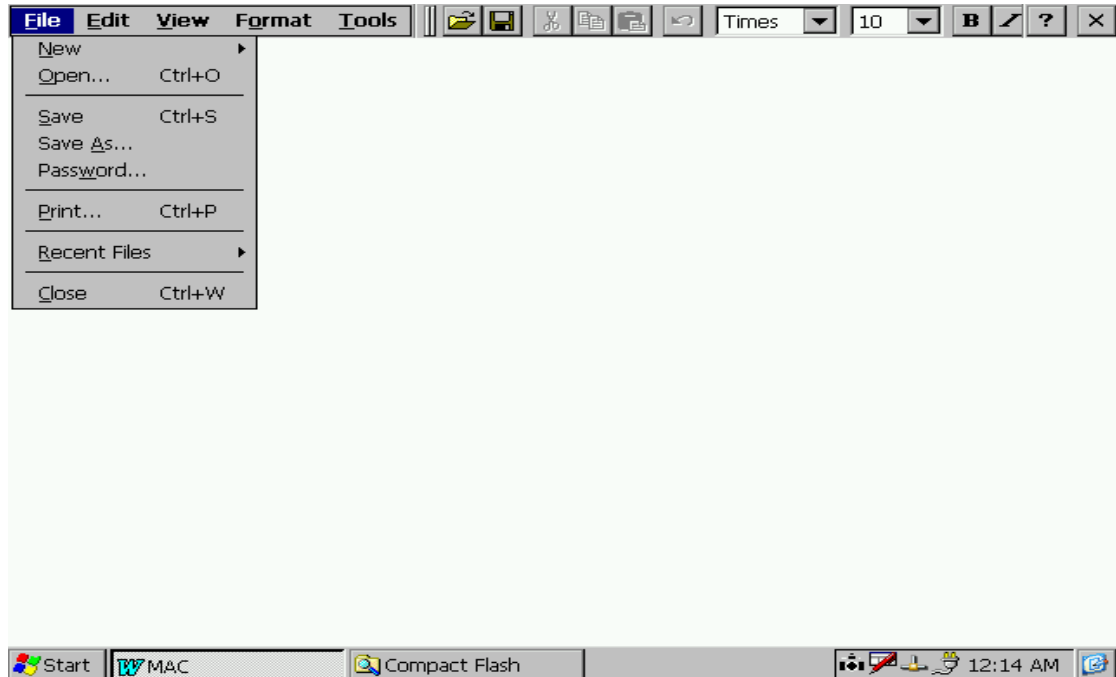
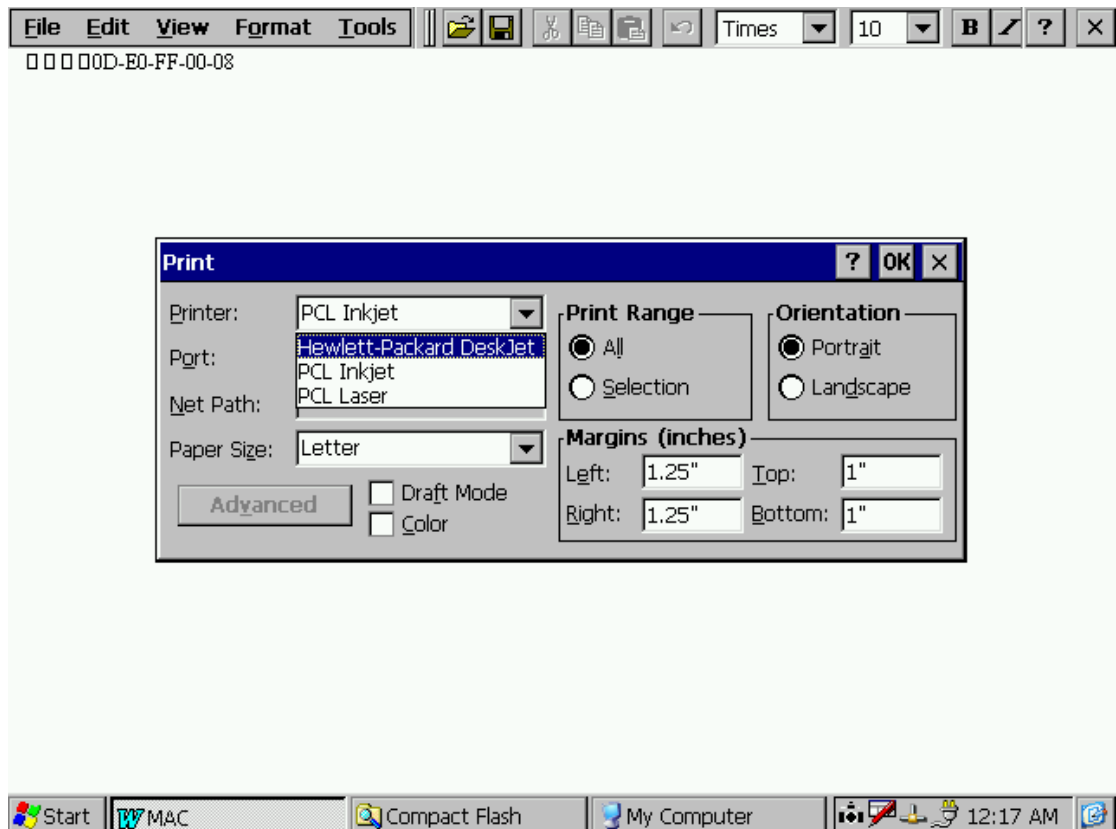


## ※ Instruction to setup local/network Printer for Wincon-8000 :

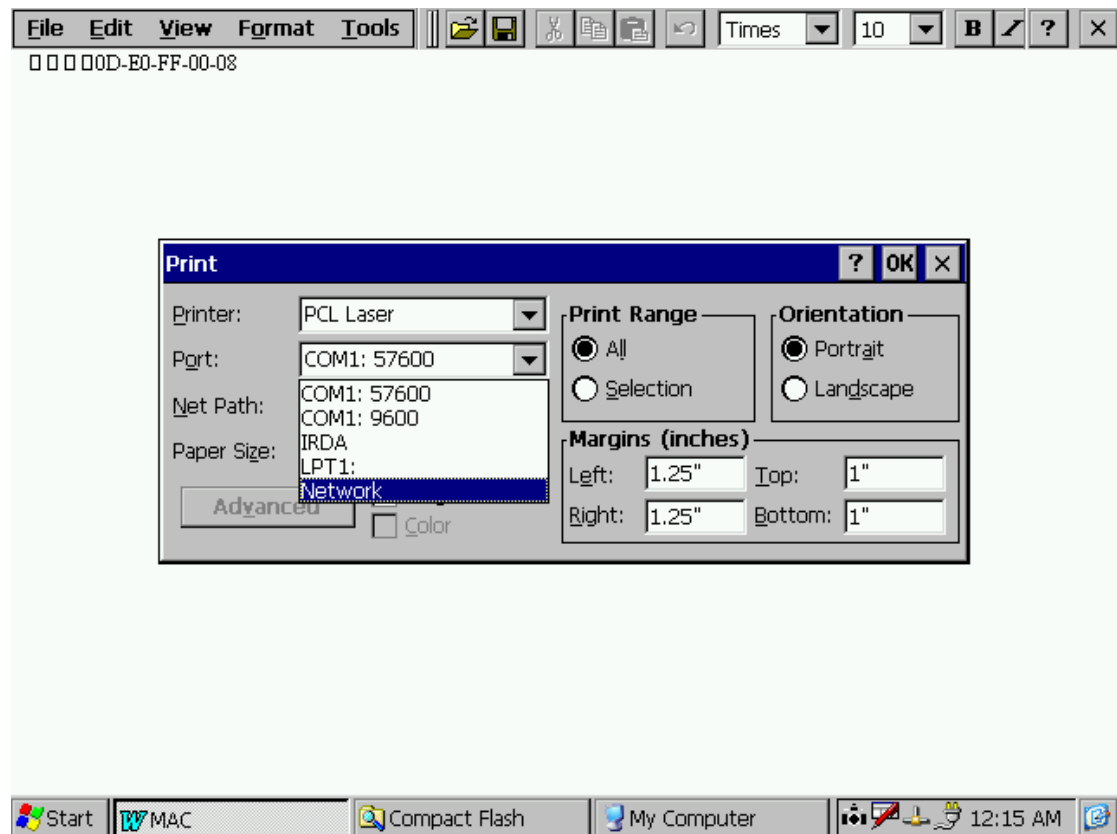
### 1、 Setup network printer in Wordpad :



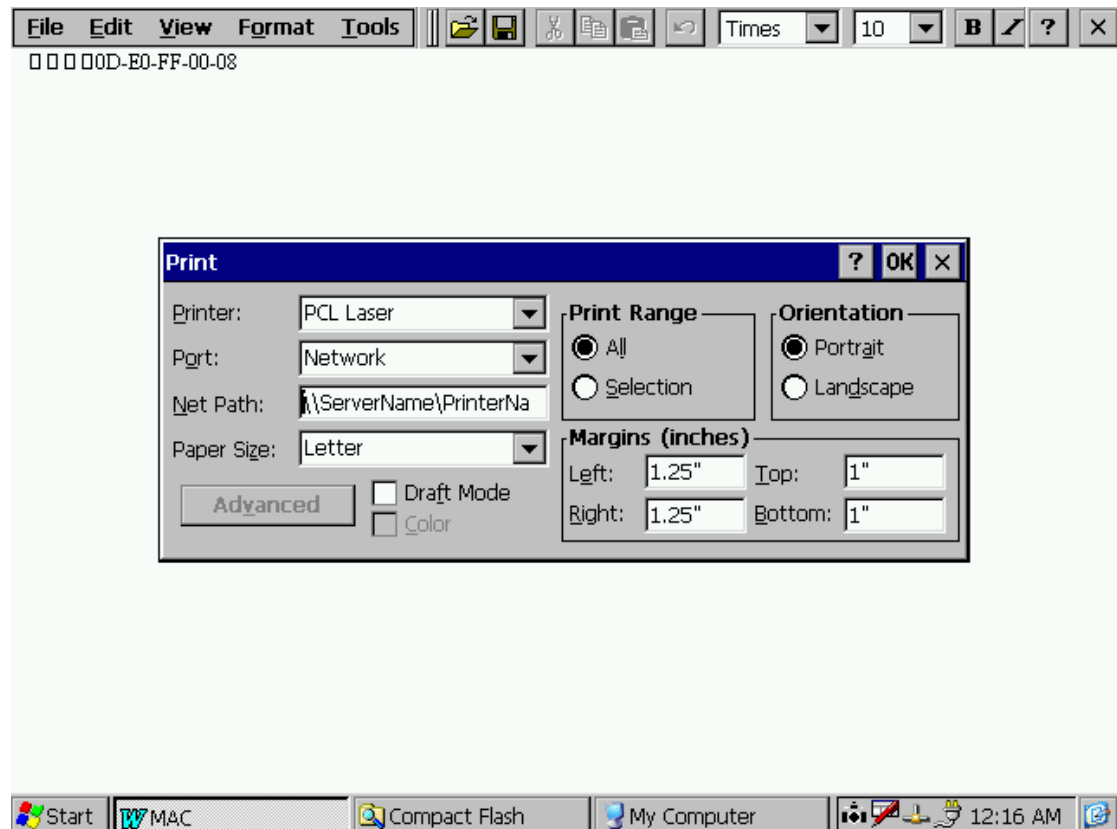
### 2、 Click Ctrl+P or Select File/Printer... :



### 3、 Select "Network" 。



### 4、 Input the path and printer name 。



## 5 、 Setting:

5-1 、 Pinter Setting : If there is no USB printer connected to WinCON8000, then it will only display PCL Laser and PCL Inkjet.

5-2 、 Port setting : 1) If you connect USB printer to Wincon-8000, please select LPT1.  
2) If you want to use Network printer, please select Network.  
3) COM1:57600 / COM1:9600 / IRDA / are not in use.

5-3 、 Net Path : input the path and printer name

[\\ServerName\PrinterName](#)

### P/S :

1 、 PCL laser and PCL inkjet printer will support most available laser jet or ink-jet printers.

2 、 Wincon-8000 will NOT support Dot-Matrix printers.

Printers verified OK by ICPDAS:

HP LaserJet 2200

HP LaserJet 2100

HP LaserJet 2300

Printers verified NOK by ICPDAS

HP 1000