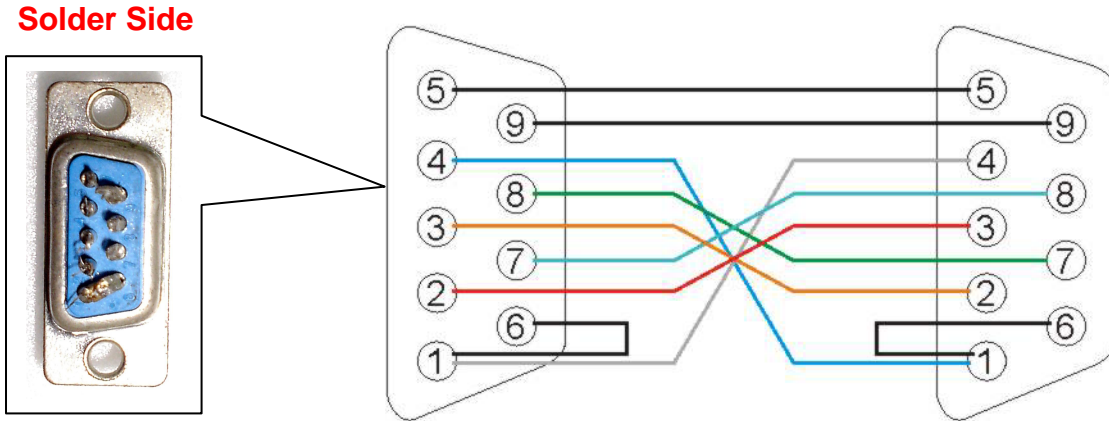


How to use ActiveSync in Wincon-8000 : (Released at Dec/13)

1. Prefix : Since there is no USB client port in Wincon-8000(only USB host imbedded), Wincon-8000 can only use ActiveSync to communicate with PC via RS-232 COM port(COM2).

2. Cable : Full Null Modem cable (viewing from solder side)



DB-9-1		DB9-2	
Receive Data	2	3	Transmit Data
Transmit Data	3	2	Receive Data
Data Terminal Ready	4	6、 1	Data Set Ready、 Carrier Detect
Signal Ground	5	5	Signal Ground
Data Set Ready、 Carrier Detect	6、 1	4	Data Terminal Ready
Request to Send	7	8	Clear to Send
Clear to Send	8	7	Request to Send

3. Install Microsoft ActiveSync software on PC [Please adopts version 3.7 or later].

4. Operation:

4-1. Connect PC to Wincon-8000 COM2 with Full Null Modem cable.


4.2. At WinCon, Select Start-> Control panel and click “PC Connection” .

Make sure “Allow connection with desktop computer when detect is attached “ is selected .

4.3 At PC, execute Active Sync and do connection settings.



4.4 At WinCon, execute Active Sync by selecting Start->Program->Active Sync. After that, **immediately**

Click  at PC side, then PC will start to active Sync with WinCon.

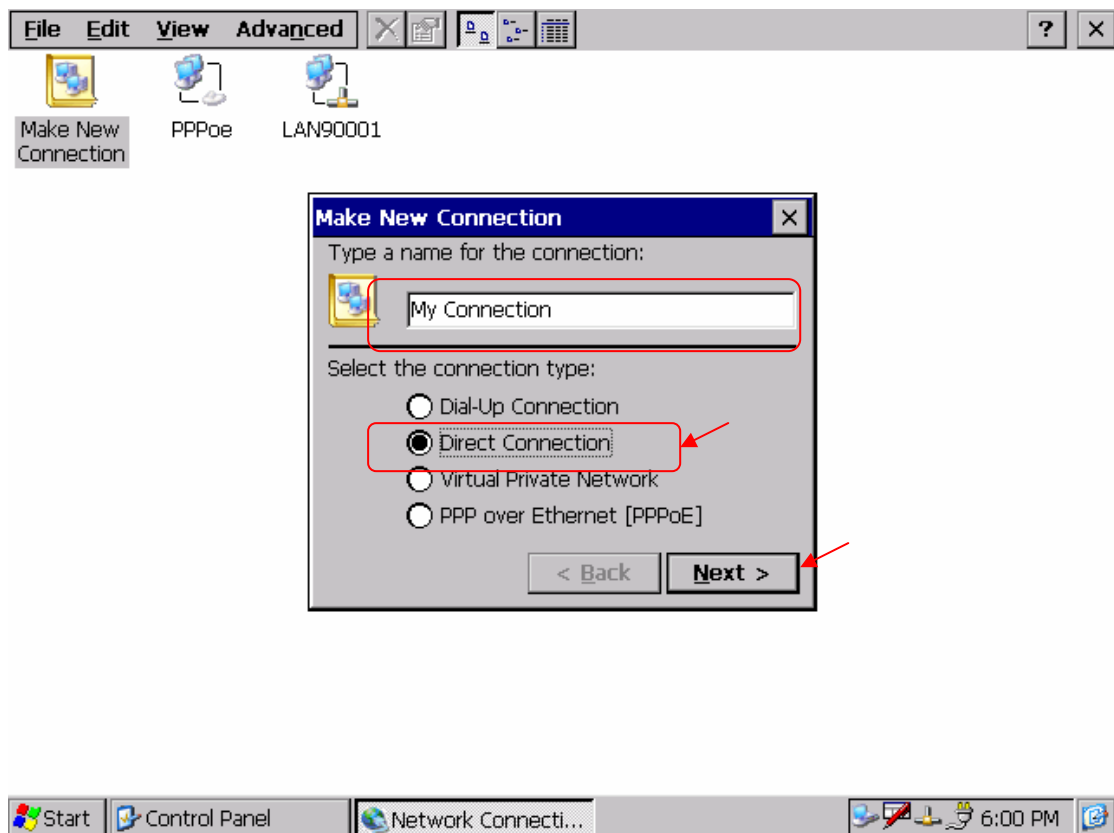
4.5 After Active Sync building up, Active Sync ICON will turn to green. 

How to ActiveSync WinCon with PC at higher baud rate

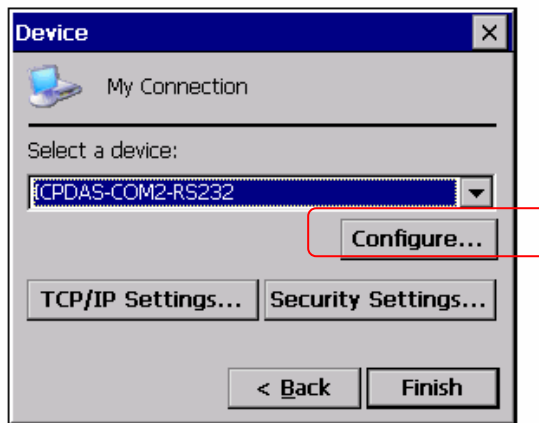
-default baud rate:19200bps , up to 115200bps for ActiveSync version 3.8

- Create a new connection on WinCon by selecting Control Panel->Network and dial-up connection->Make New connection.
- Select Direct Connection.
- Click "Next" button.

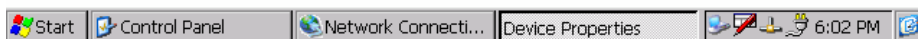
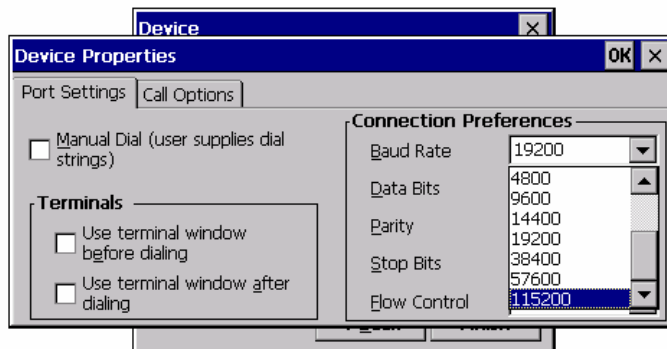
- For ActiveSync version 3.7 or 3.7.1 , 19200bps or 57600bps can be selected.
- For ActiveSync version 3.8, 19200bps, 38400bps, 57600bps or 115200bps can be selected.



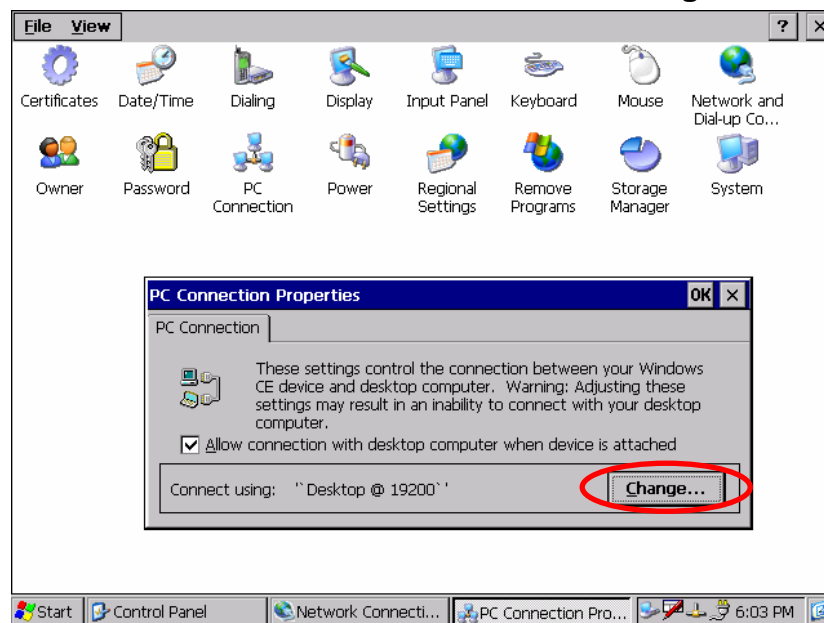
- **Select Configure**



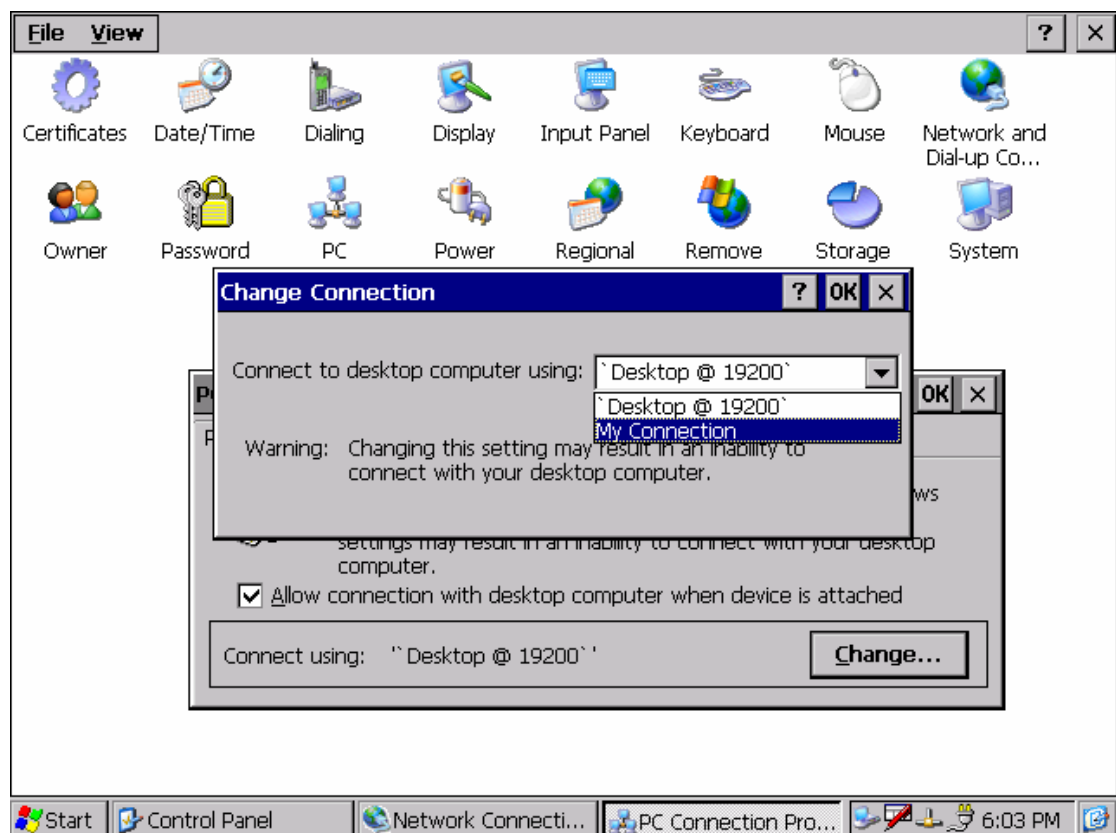
- **Choose baud rate and OK. Click “Finish” button to close the dialog box.**



- **Select Control Panel-> PC Connection. Click “Change” button**



- **Choose new created connection (for ex: My Connection) and click OK to close the dialog box.**



- **Repeat the procedure as listed in Step4.**