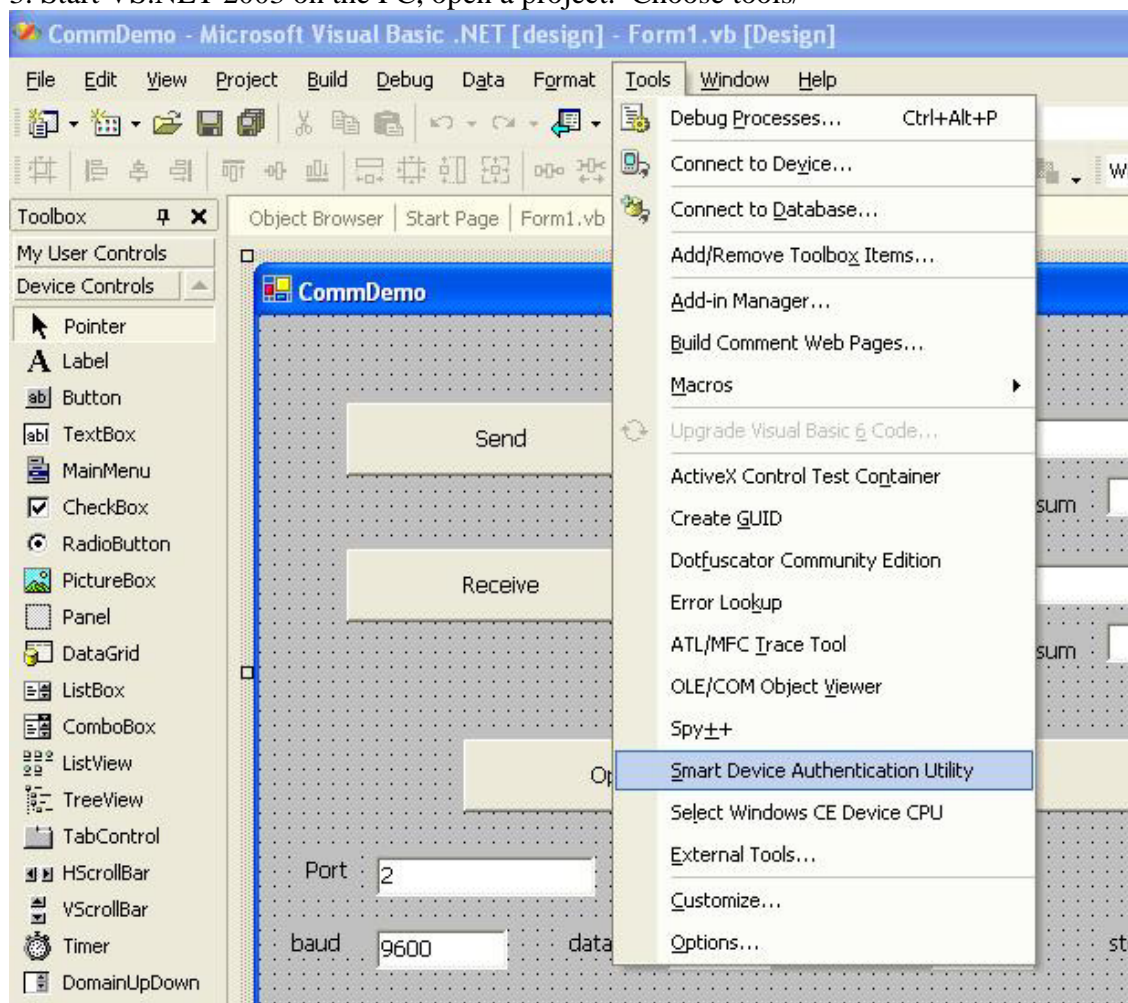


Debugging the WinCon-8000 from Visual Studio 2003

1. Copy the file “toolhelp.dll” from the PC with Visual Studio.NET 2003 to the WinCon. Source directory is C:\Program Files\Microsoft Visual Studio .NET 2003\CompactFrameworkSDK\WinCE Utilities\ToolHelp\WinCE4\armv4 . Destination directory is \Windows. This needs to be done every time you power up the WinCon. A batch file in auto execute could be used to automate this.

2. Run \Windows\sdauthutildevice.exe in the WinCon. Select the available IP address and click Start.

3. Start VS.NET 2003 on the PC, open a project. Choose tools/

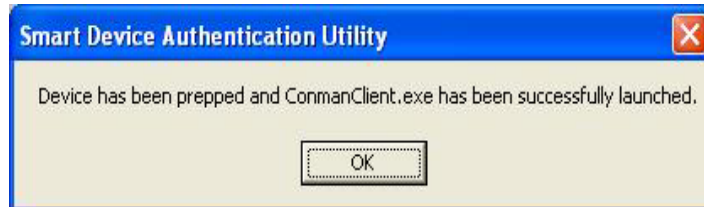


If “Smart Device Authentication Utility” or toolhelp.dll is not available, please install Windows CE .NET Utilities v1.1 for Visual Studio .NET 2003 .
(download link:
<http://www.microsoft.com/downloads/details.aspx?displaylang=en&FamilyID=7ec99ca6-2095-4086-b0cc-7c6c39b28762>)

4. Enter the IP address of the WinCon-8000.

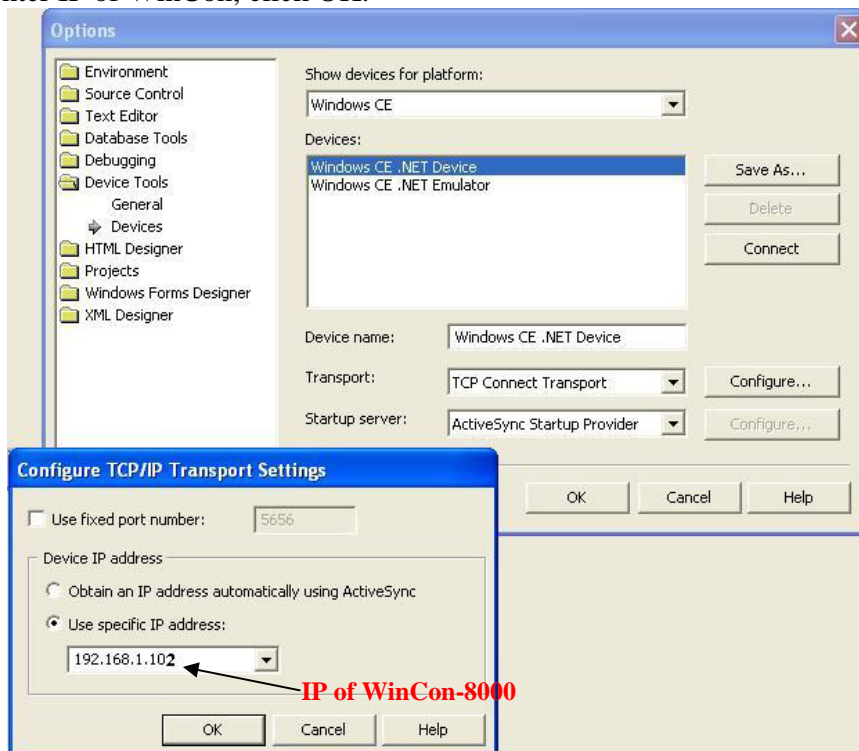


5. Click "Set up device". Wait about 30 seconds.

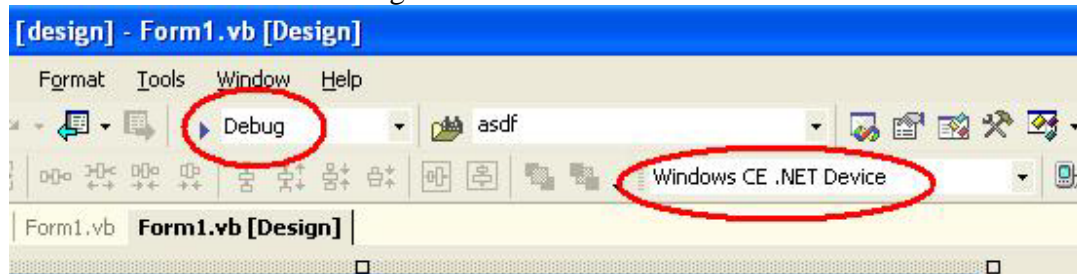


Do NOT close the first dialog. Minimize it only.

6. In VS.NET 2003 choose tools/options/device tools/device/config, "use specific IP address, enter IP of WinCon, click OK.



7. Put a breakpoint in your program code somewhere to see debugging work. Set Debug and Windows CE device config.



8. Press F5 on the PC to run program on the WinCon-8000.

Caution: After debugging your VB.net/C# program ,if you want to copy your program and run it on Wincon-8000, please execute Wincon Utility, and select SAVE REGISTRY>RECOVER TO FACTORY SETTING and reboot Wincon-8000. (This action will recover ".Net Compact framework" to the factory setting). Otherwise, your created VB/C# program may not work !