

Classification	ISaGRAF English FAQ-149						
Author	Chun Tsai	Version	1.1	Date	Oct.2011	Page	1 / 2

How to make the ISaGRAF WinCE PAC play a sound ?

The following ISaGRAF driver support the “ComStr_W” function to play a sound (support only the *.wav format).

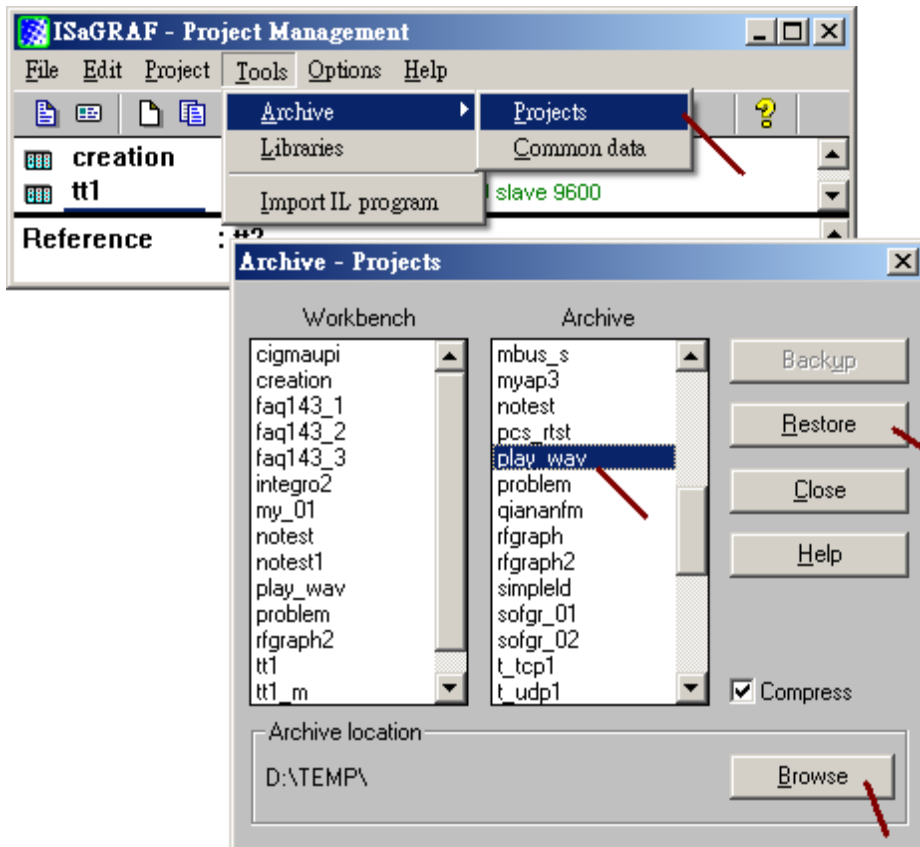
VP-25W7/23W7 : version 1.31 or later

(WP-8xx7 version 1.39 and XP-8xx7-CE6 version 1.19 or later also support it, however there is no phone port in these two PAC)

New released ISaGRAF Driver : <http://www.icpdas.com/products/PAC/i-8000/isagraf-link.htm>

User can download “faq149_demo.zip” from <http://www.icpdas.com/faq/isagraf.htm> > FAQ-149 . It includes a demo program “Play_wav.pia” and a sound-file “good_day.wav” .

Make sure if your PAC fits the above listed ISaGRAF driver before testing the demo program. Then restore the demo program to the PC / ISaGRAF.



Then copy “good_day.wav” to PAC 's \System_Disk\ , then download the demo program to the PAC. If not familiar with the ISaGRAF software, please refer to the section 1.1 and 1.2 and chapter 2 of the “ISaGRAF User's Manual” or refer to the PAC 's Getting Started manual (visit http://www.icpdas.com/products/PAC/i-8000/getting_started_manual.htm).

Classification	ISaGRAF English FAQ-149						
Author	Chun Tsai	Version	1.1	Date	Oct.2011	Page	2 / 2

The program to play a sound is similar as the following code.

```
(* INIT is declared as an internal Boolean with an initial value - TRUE *)
(* TMP and Play_Sound are declared as an internal Boolean *)
(* wav_file is declared as a Message with length as 128 *)
(* do some initial operations *)
if INIT then
  INIT := False ;
  wav_file := '\System_Disk\good_day.wav' ;
End_if ;

(* Play a sound when "Play_Sound" is set as True *)
if Play_Sound then
  Play_Sound := False ;
  TMP := ComStr_w( 997 , wav_file ) ;
end_if ;
```

Please plug-in an earphone or a speaker to the PAC 's phone port (make sure the "good_day.wav" is already copied to PAC 's \System_Disk\). Then download the "Play_wav" demo program to the PAC. The PAC play a sound every time when setting the "Play_Sound" as TRUE.

