
How to install the ISaGRAF Ver. 3 on Windows Vista or Windows 7?

By grady_dun@icpdas.com

Please check the version of the operation system before installing the ISaGRAF Ver. 3
If your operating system is Windows 7(64-bit), please refer to the page 3 in this document.

For Windows Vista(x86, 32-bit) or Windows 7(x86 32-bit)

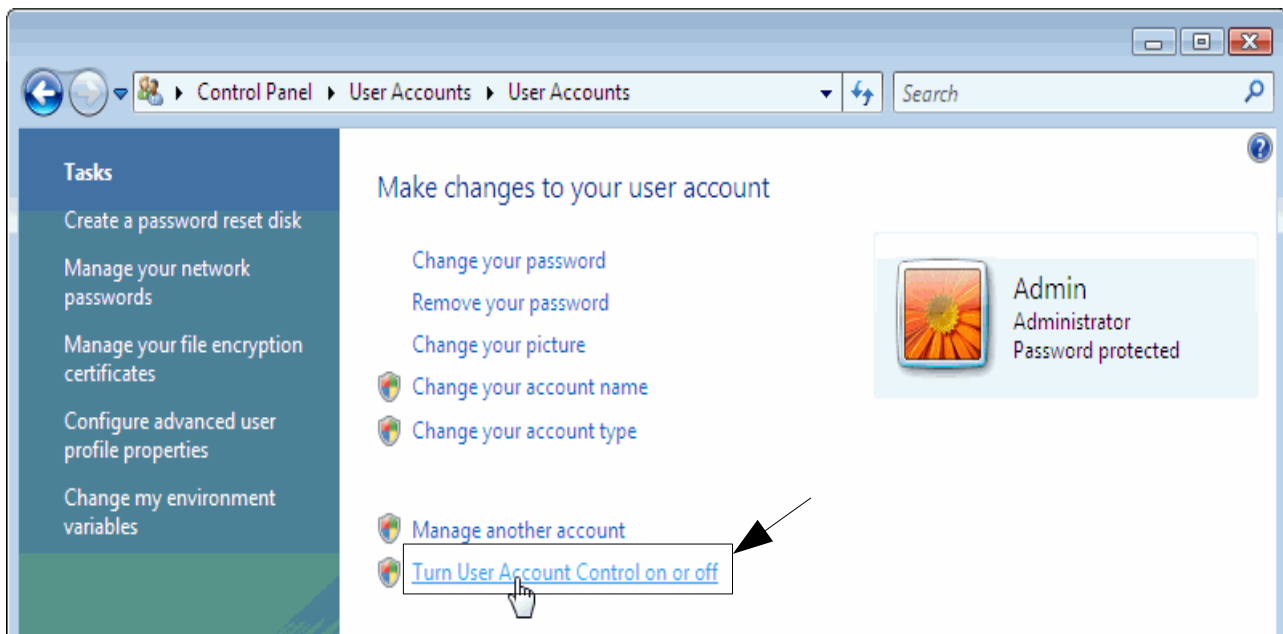
Please do the following steps to install the ISaGRAF Ver. 3.

- Disable the “UAC”(User Account Control) for the operating system (Only the administrator can do that).

How to disable UAC?

Note : Only the administrator can modify the “UAC” setting.

1. From the “**Start**” menu, choose “**Control Panel**”, then “**User Accounts**”, then “**User Accounts**”, then click “**Turn User Account Control on or off**”.



2. Click “**Continue**” on the pop-up “UAC” dialog.

3. **Windows Vista:**

Don't check the **“Use User Account Control(UAC) to help you protect your computer”** option, then click the **“OK”** button (Figure 1)

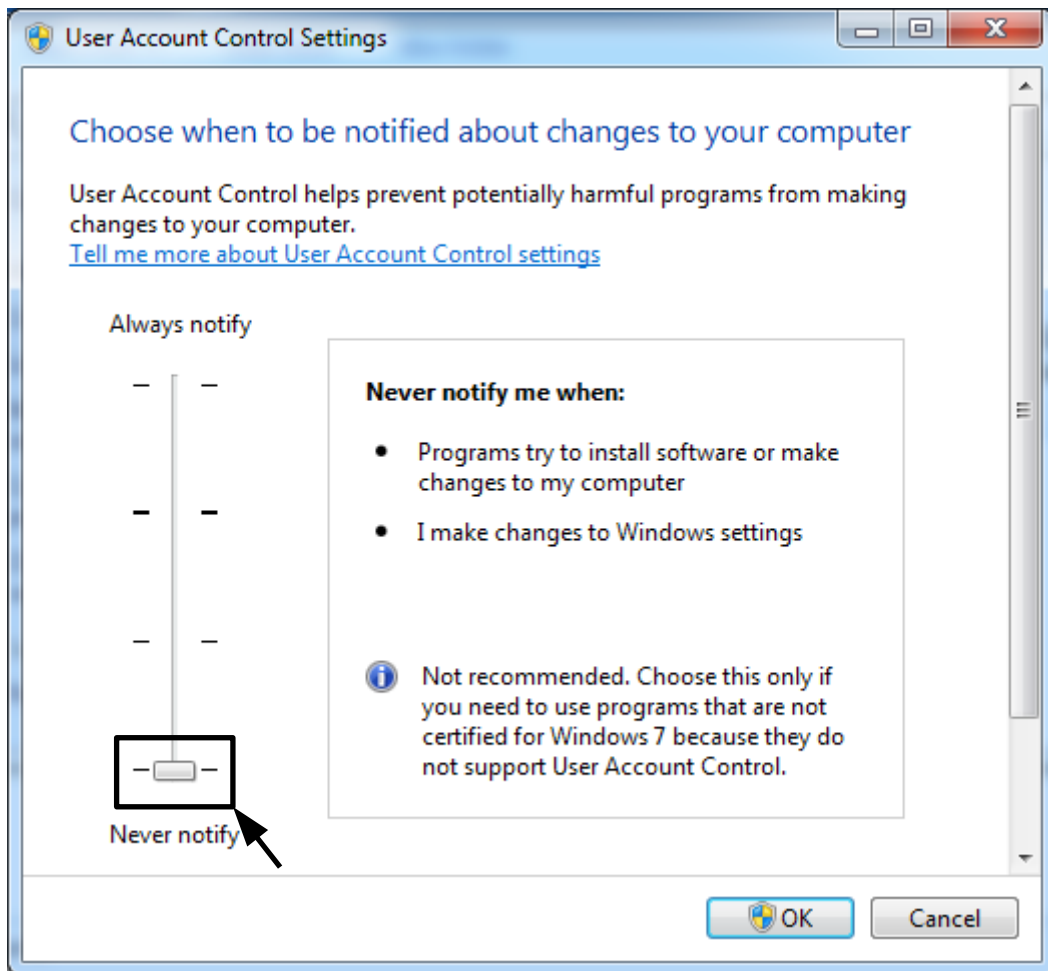
Windows 7:

Slide the slider bar to the lowest value (towards Never Notify), with description showing **Never notify me**. (Figure 2)

Figure 1:



Figure 2:



4. Restart your computer once.

5. Please follow steps listed in the section 1.1 and 1.2 of the ISaGRAF User's Manual to install the ISaGRAF Ver.3 after your computer rebooting .

For Windows 7(x64) Professional, Enterprise, or Ultimate

ISaGRAF Ver. 3 can only run in the XP mode inside the Windows 7(64-bit). Please do the following steps to install the XP mode, Virtual PC and ISaGRAF Ver. 3.

Install Virtual PC and XP mode

1. You could check that your PC hardware works with Windows XP Mode by downloading and running [Microsoft® Hardware-Assisted Virtualization Detection Tool](#).
2. Download Windows Virtual PC and Windows XP Mode installers from the Windows Virtual PC Web site (<http://go.microsoft.com/fwlink/?LinkID=160479>).
3. Download the document, Installation instructions and Release Notes for Windows Virtual PC and Windows XP Mode, from [Windows Download Center](#) and follow the steps listed in the document to install Virtual PC and XP mode.

To Install the ISaGRAF Ver. 3

1. In the virtual machine, please follow steps listed in the section 1.1 and 1.2 of the ISaGRAF User's Manual to install the ISaGRAF Ver.3.