

Program the I-8093W (3-axis high speed Encoder input module) by ISaGRAF.

By chun@icpdas.com

The following ICP DAS ISaGRAF drivers support the I-8093W module.

WP-8xx7: Ver. 1.13 or later , VP-2xW7: Ver. 1.04 or later , iP-8xx7: Ver. 1.05 or later

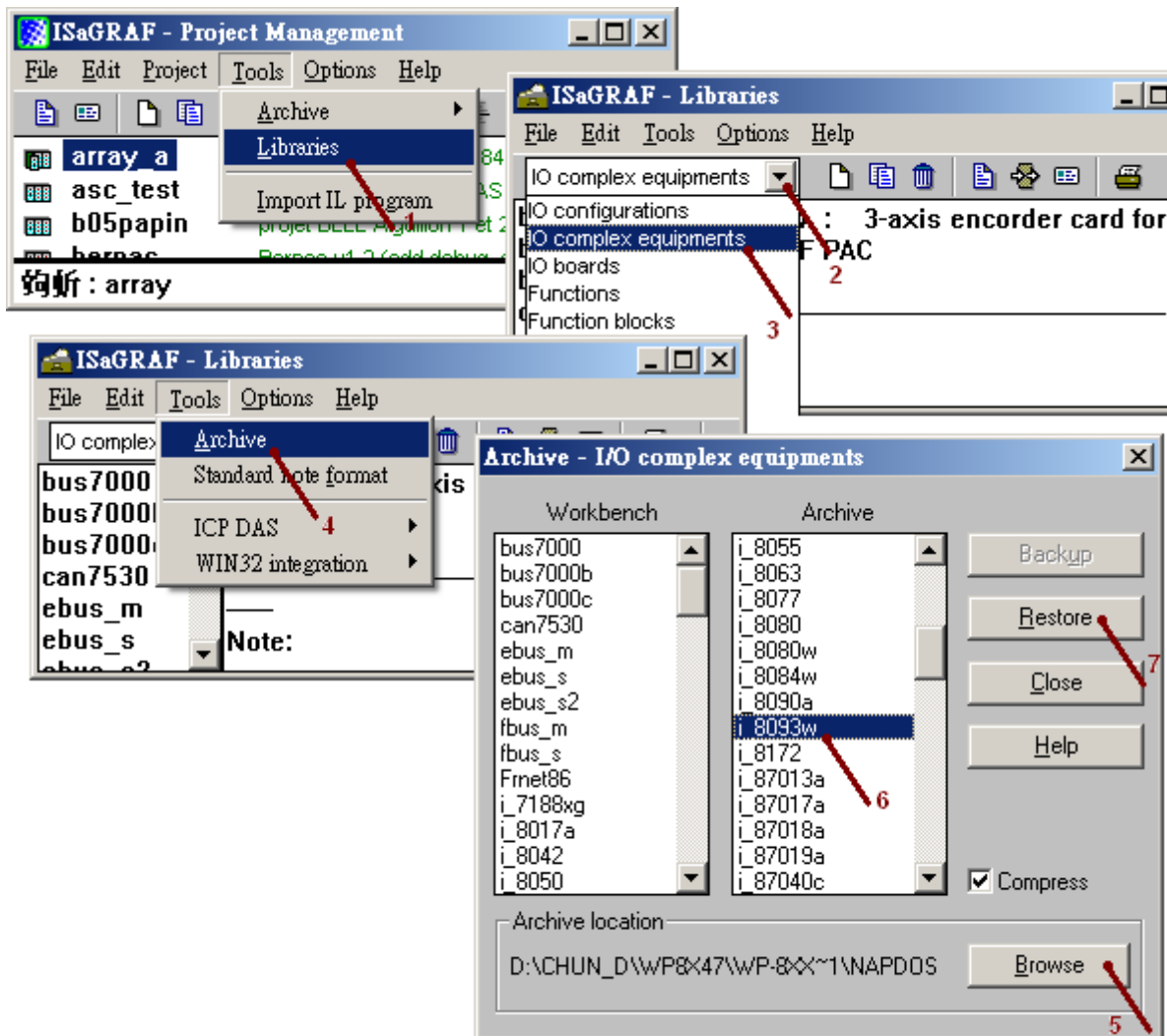
ISaGRAF driver: <http://www.icpdas.com/products/PAC/i-8000/isagraf-link.htm>

DataSheet: <http://www.icpdas.com/products/PAC/i-8000/data%20sheet/data%20sheet.htm>

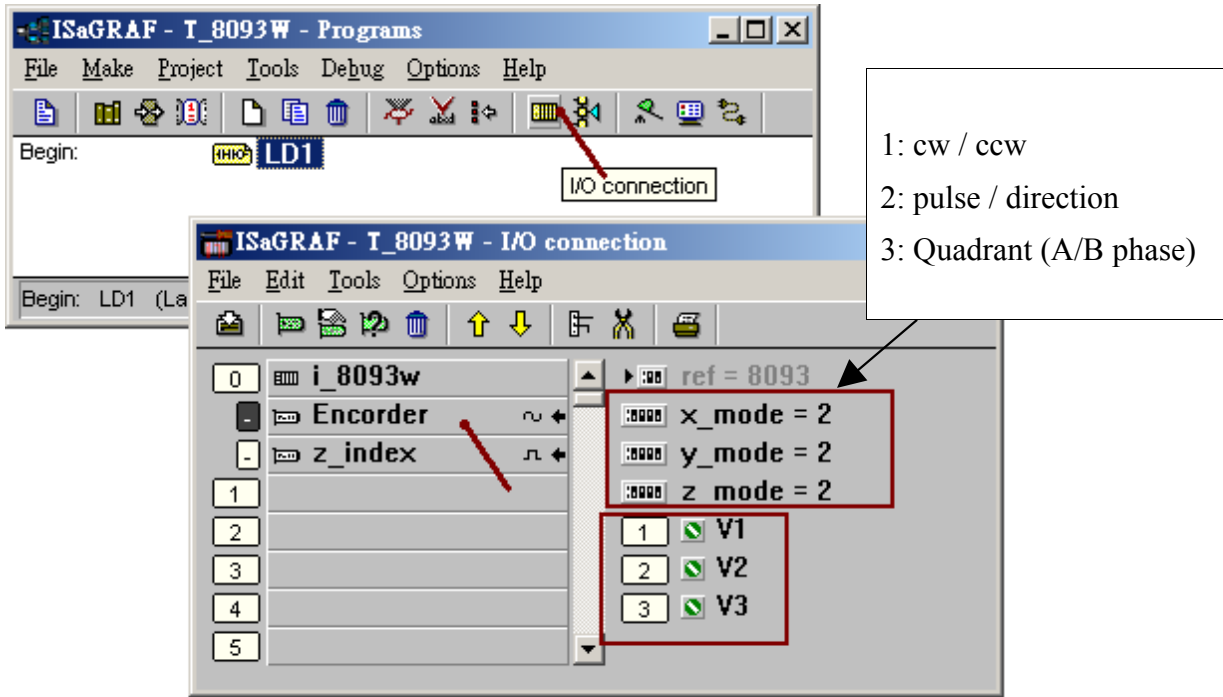
The I-8093W is a 3-axis high speed Encoder input module. It supports max. 4M Hz input signal for pulse/direction and cw/ccw input mode, and supports max. 1M Hz for Quadrant (A/B phase) input mode. Please refer to the following web site for more I-8093W hardware information.

http://www.icpdas.com/products/PAC/i-8000/8000_IO_modules.htm > I-8093W

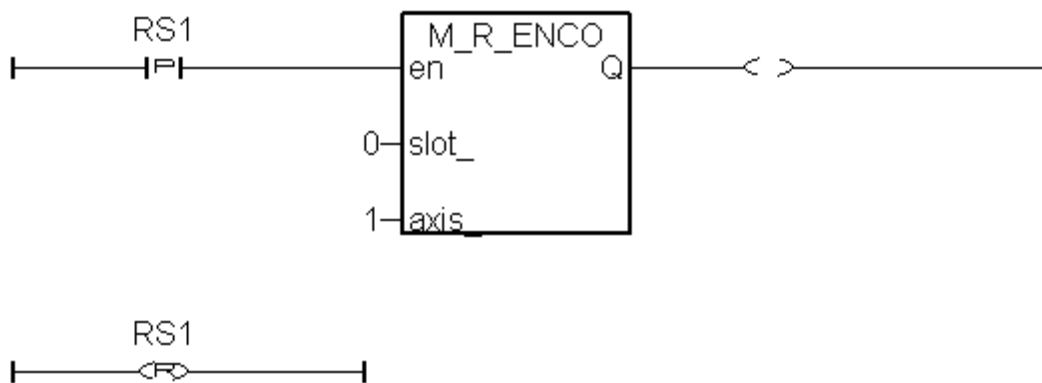
Please restore the “i_8093w.xia” to your PC / ISaGRAF before you can program it by ISaGRAF. The “i_8093w.xia” can be downloaded from <http://www.icpdas.com/faq/isagraf.htm> > 112 or <ftp://ftp.icpdas.com/pub/cd/winpac-8xx7/napdos/isagraf/ark/> .



To program the “I-8093W” , connect the “i_8093w” in the associate slot number as below. The following figure shows the “I-8093W” is plugged in slot 0. All Encoder input modes (X, Y, Z) are set as mode 2 (pulse / direction). ISaGRAF variables V1, V2 and V3 must be decalred as Interger / input. All optional modes are 1 (cw / ccw) , 2 (pulse/direction) and 3 (A/B phase or Quadrant). The “z_index” is to get the Z-index D/I of the X, Y and Z axis , please declare them as boolean/input.



The Encoder value of the I-8093W is a 32-bit signed integer value ranging from -2,147,483,648 to + 2,147,483,647 . To reset the Encoder value to 0 at any time, user may add a similiar Ladder code as below.



The above code is to reset the X-axis Encoder value of slot 0 's I-8093W (or I-8090W) to 0. When the “RS1” is rising to True, the associate Encoder value will become 0 in the beginning of the next PLC scan cycle. (Definition of “axis_” , 1: X-axis , 2: Y-axis, 3: Z-axis)