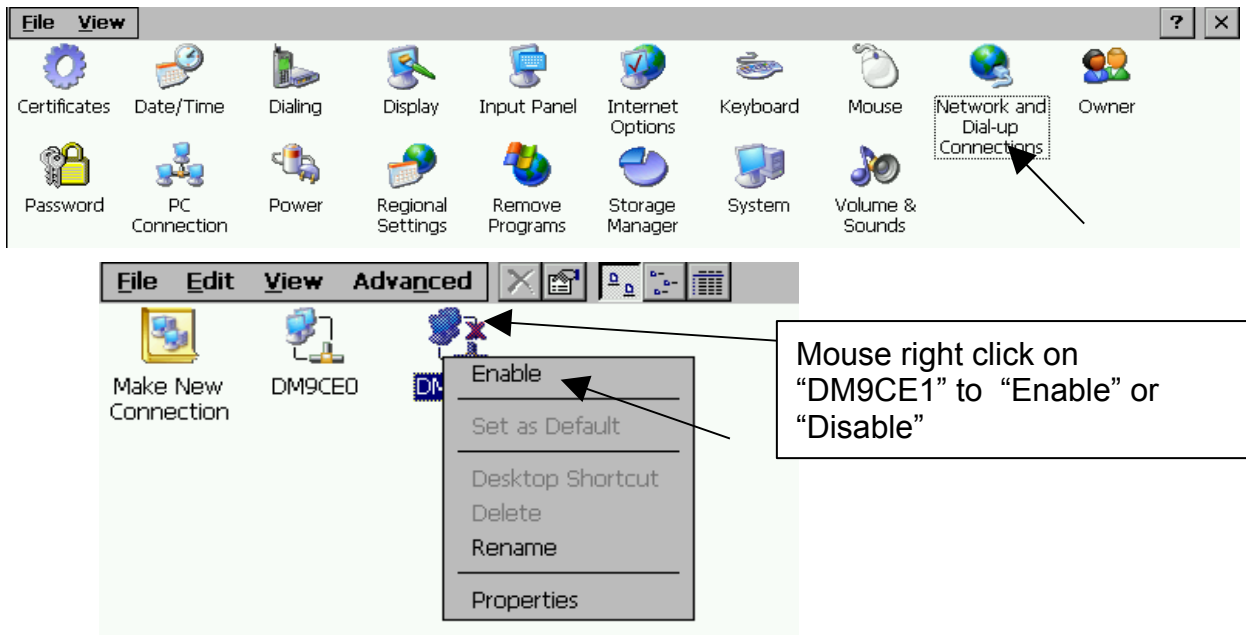


Why my PC can not run “ftp” to connect W-8347 or W-8747 ?

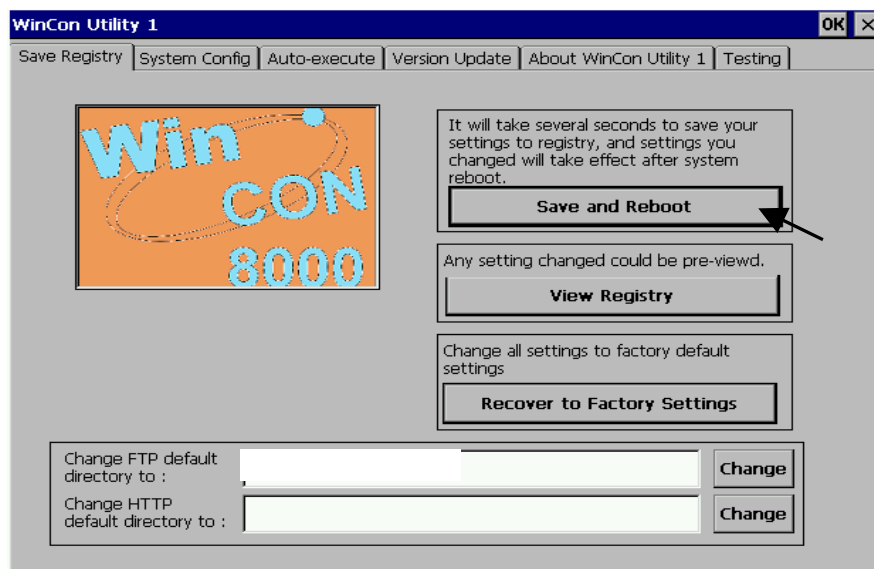
by chun@icpdas.com

The possible reason is as below.

1. Wincon-8347 / 8747 has two Ethernet ports. Its ftp server only works when there is only one ethernet port enabled. If both are enabled or both are disabled, the ftp server will not work. Please follow below steps to Disable or Enable the Wincon ethernet port. (Please recover to your original setting if finished the “ftp” operation)



If user would like to store the modified setting, please Run “Start” – “Programs” – “Wincon Utility”, to click on “Save and Reboot” to store and re-boot it once as below.



2. If your PC 's IP and the Wincon 's IP address are not in the same IP domain. “Ftp” will not work for example,

A. PC : IP = 192.168.1.9 , Mask = 255.255.255.0 and
W-8347 : IP = 192.168.5.3 , Mask = 255.255.255.0 “ftp” will not work

B. PC : IP = 192.168.1.9 , Mask = 255.255.255.0 and
W-8347 : IP = 192.168.1.3 , Mask = 255.255.255.0 “ftp” will work

3. ISaGRAF controller supports only Fixed IP setting. It doesn't support DHCP (or automatically assign IP address) . Please assign an unique and different fixed IP address to each ethernet port of Wincon.

4. Please check if the “ftp” function is disabled in the ISaGRAF driver windows (that's why ftp no working).



5. PC gives wrong command. Please type correct “ftp” command as below in your PC 's Internet Explorer windows. For example,

ftp://192.168.1.3