

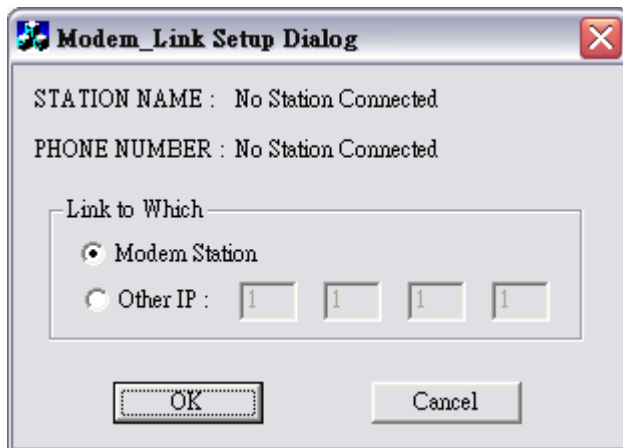
I-7188EG/XG support remotely downloads via Modem Link

ANS:

I-7188EG/XG has to install the X504 because only Com4 of X504 supports full modem signals. It has embedded the Modem Link protocol for remotely download and monitoring since the I-7188EG driver version of 2.10 & I-7188XG driver version of 2.08. Please visit the web-site to get the controller new driver version.

Web-site: <http://www.icpdas.com/products/PAC/i-8000/isagraf.htm>

Only the "Modem station" can connect to I-7188EG/XG.



Web-site: <http://www.icpdas.com/products/PAC/i-8000/isagraf.htm>

Connect a RS232 cable between I-7188EG/XG's COM4 to Modem

I-7188EG/XG (Com4 of X504)		Modem (9-pin Dsub)
DCD 4	_____	1 DCD
RXT 4	_____	2 RXD
TXD 4	_____	3 TXD
DTR 4	_____	4 DTR
GND 4	_____	5 GND
DSR 4	_____	6 DSR
RTS 4	_____	7 RTS
CTS 4	_____	8 CTS
RI 4	_____	9 RI

More detail information refer to the "User_Manual_I_8xx7_13.pdf"