
FAQ-027: How to link to Modbus ASCII Slave device ?

I-7188EG + X607 or X608: driver ver. 2.07 or later
I-7188XG + X607 or X608: driver ver. 2.05 or later
I-8xx7+ S256 or S512 : driver ver. 3.08 or later
W-8x37 : driver ver. 3.20 or later

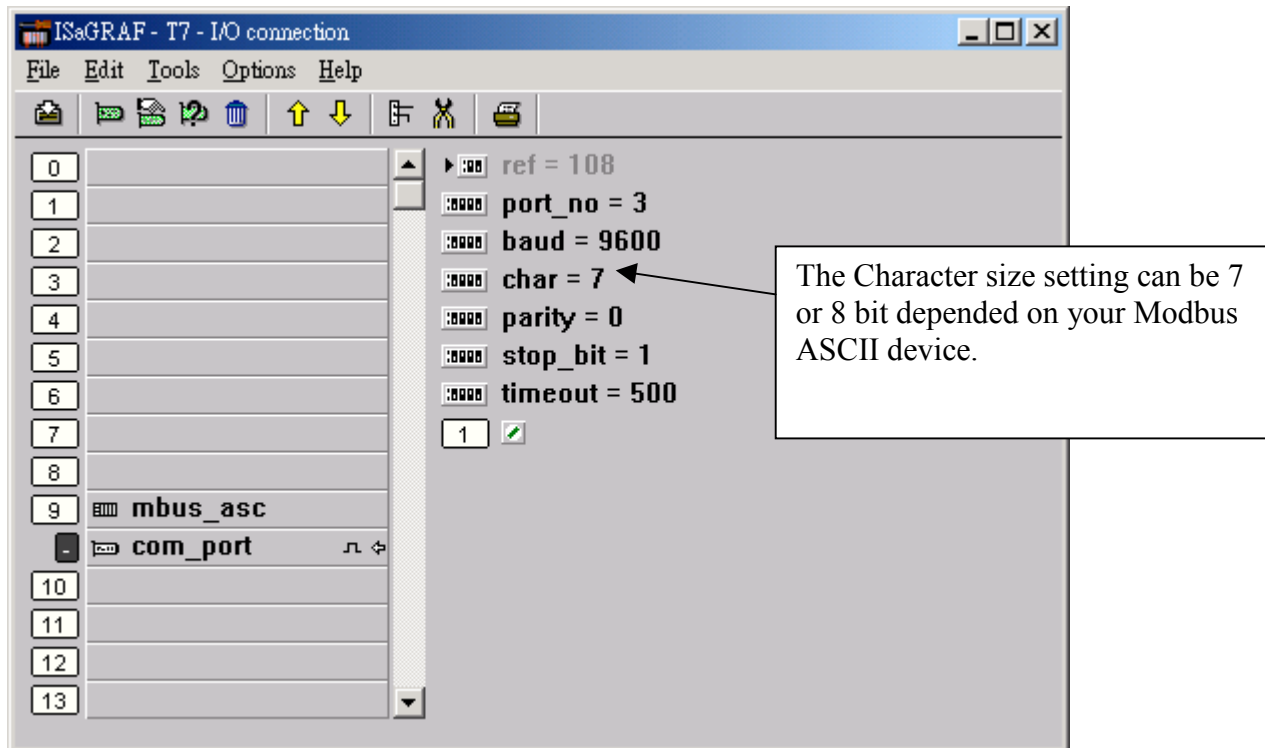
I-7188EG/XG & I-8417/8817/8437/8837 support only one Modbus Master port. (can be Modbus RTU Master or Modbus ASCII Master)

Wincon-8037/8337/8737/8036/8336/8736 support Multi-ports of Modbus Master. (can be Modbus RTU Master or Modbus ASCII Master), please refer to ISaGRAF FAQ-028.

To use Modbus ASCII Master, please connect “mbus_asc” in the ISaGRAF I/O connection windows as below.

If you can not find “mbus_asc” in your ISaGRAF, please visit <http://www.icpdas.com/products/PAC/i-8000/isagraf.htm> to download “ICP DAS Utilities For ISaGRAF.zip”.

For new driver please click “New Driver for I-8xx7, 7188EG/XG & W-8x37”



Then using below function blocks in your ISaGRAF Ladder or Function block program.

Mbus_R	Read max. 12 word-value (-32768 ~ +32767) using Modbus function code 3 or 4 Read max.192 bit-value using Modbus function code 1 or 2
Mbus_R1	Same as Mbus_R but with one extra setting – Period. Read words or bits with a specified period time (unit is second)
Mbus_N_R	Read 8 word-value (-32768 ~ +32767) using Modbus function code 3
Mbus_NR1	Same as Mbus_N_R but with one extra setting – Period. Read 8 words with a specified period time (unit is second)
MBUS_B_R	Read 8 bit-value using Modbus function code 1
MBUS_BR1	Same as Mbus_B_R but with one extra setting – Period. Read 8 bits with a specified period time (unit is second)
MBUS_N_W	Write max. 4 word-value (-32768 ~ +32767) using Modbus function code 6 or 16
MBUS_B_W	Write max. 4 bit-value using Modbus function code 5 or 15
MBUS_WB	Write max. 16 bit-value using Modbus function code 15

For example:

