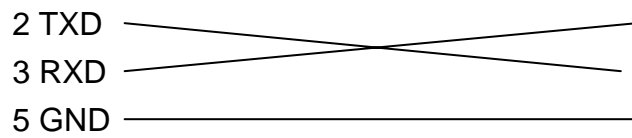


FAQ-022: How to Use Proface HMI (Touch panel) to link to I-7188EG/XG , I-8xx7 and Wincon-8x37 ?

Cable Pin assignment:

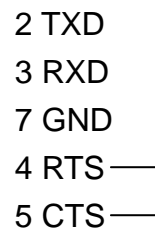
I-7188 COM1 & I-8000 COM1 (RS-232)

9-Pin Dsub Male



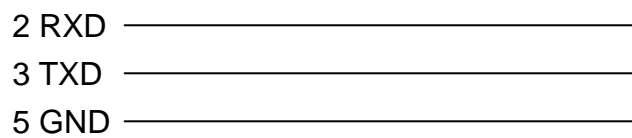
Proface HMI (RS-232)

25-Pin Dsub Male



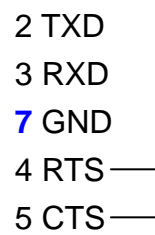
Wincon COM2 (RS232)

9-Pin Dsub Female

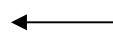


Proface HMI (RS-232)

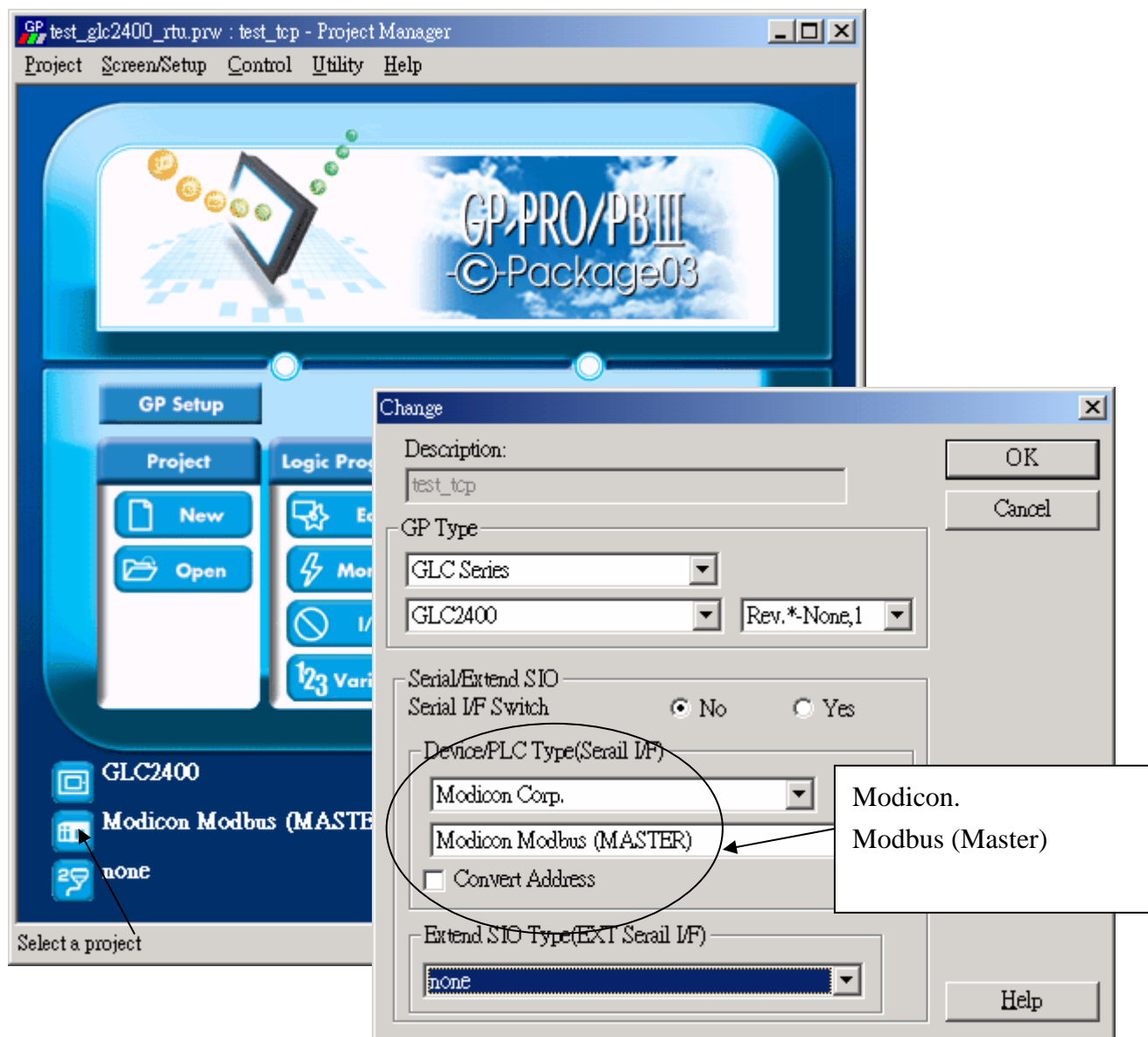
25-Pin Dsub Male



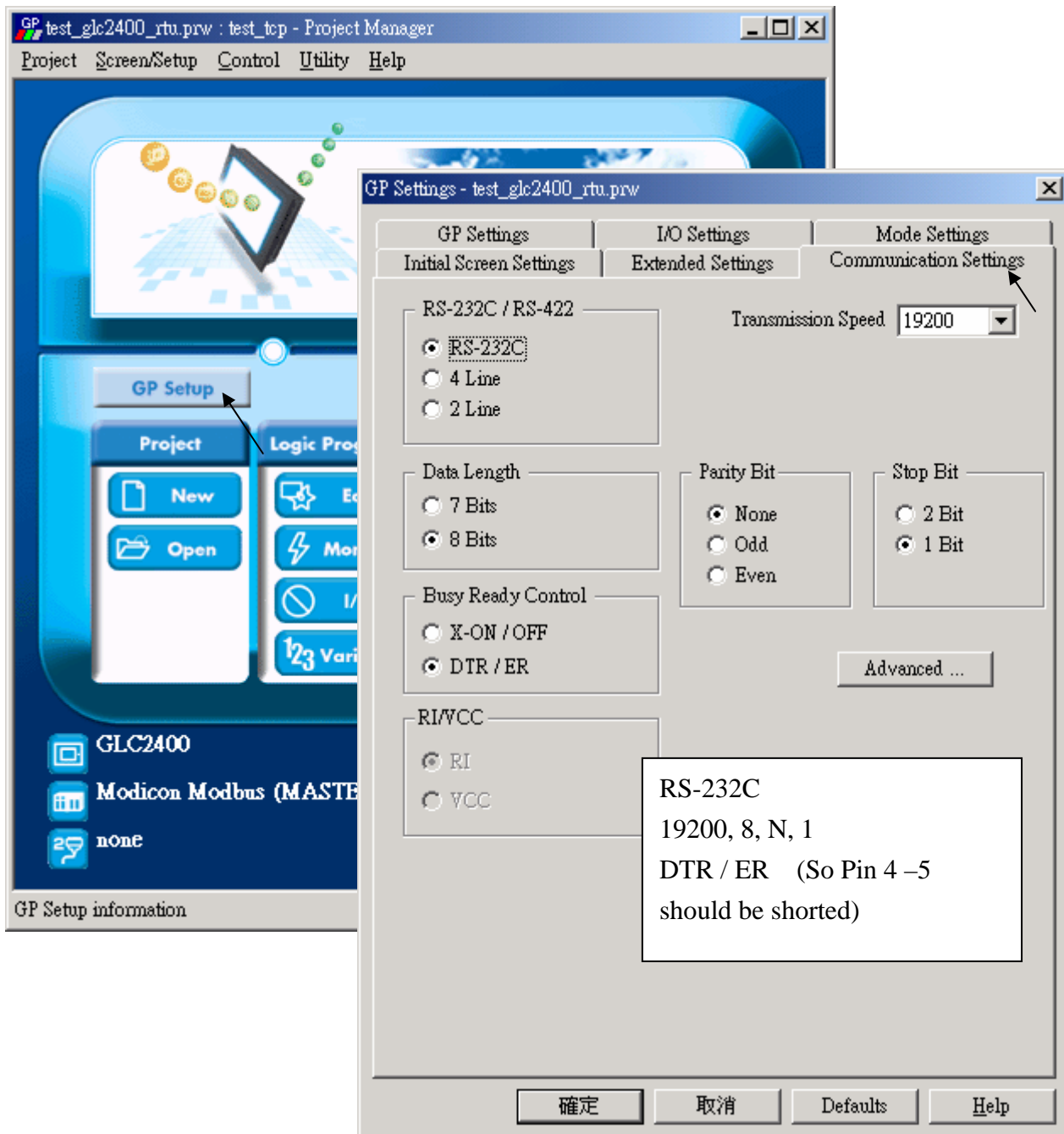
原先 5 是錯的
7 才對



Device/PLC Type Setting:



Communication Setting:



Mode Setting:

The screenshot displays the GP PRO/PBIII software interface. The main window is titled "GP test_glc2400_rtu.prw : test_top - Project Manager" and features a menu bar with "Project", "Screen/Setup", "Control", "Utility", and "Help". The main area shows a "GP Setup" button and a "Project" section with "New" and "Open" options. A list of project items includes "GLC2400", "Modicon Modbus (MAS)", and "none".

The "GP Settings - test_glc2400_rtu.prw" dialog box is open, showing the "Mode Settings" tab. The settings are as follows:

- PLC Type: Modicon Modbus (MASTER)
- System Start Address: 400001
- Machine Number: 1
- Read Area Size: 1
- Link Protocol Type: 1:1, n:1
- Node Setup:
 - Node Number: 0
 - Transmission Status: 400001

Buttons for "Customize ..." and "Option ..." are visible next to the Node Setup fields. At the bottom of the dialog are buttons for "確定" (OK), "取消" (Cancel), "Defaults", and "Help".

A text box provides the following information:

System Start Address should be 400001
Machine Number is the Net-ID of the ICP DAS controller. Default is 1

Modbus Network Address Mapping:

Value is in decimal.

	Proface HMI	7188EG/XG , 8xx7	W-8x37
Read / Write Word	400001 ~ 40xxxx	1 ~ 4095	1 ~ 8191
Read / Write Bit	000001 ~ 00xxxx	1 ~ 4095	1 ~ 8191

For Example:

	Proface HMI	7188EG/XG , 8xx7	W-8x37
Read Word	400007	7	7
Write Word	400012	12	12
Read Bit	000001	1	1
Write Bit	000002	2	2