

Can I use 8K parallel D/I board to get counter input up to 1KHz ? How ?

Ans: If you have the user's manual, please refer to section 3.8 – “Counters built in parallel D/I boards”. Complete manual resides at the CD-ROM delivered with the ICP DAS's products. CD:\napdos\isagraf8000\english_manu\ “User_Manual_I_8xx7.pdf” or can be download at <http://www.icpdas.com/products/8000/isagraf.htm>

I-8417/8817/8437/8837 supports D/I counters since its driver version of 2.28. Only parallel input boards plug **at slot 0** are supported, not for serial boards. The following input boards are available with D/I counters.

I-8040, 8042, 8051, 8052, 8053, 8054, 8055, 8058, 8063, 8077

I-7188EG supports D/I counters since its driver version of 1.21 while I-7188XG since 1.19. Only X??? boards with digital input channels are available with D/I counters.

The max channel of parallel D/I counter available in one controller is up to 8. And the max frequency of counter input is up to 1k Hz with minimum pulse width of 0.5 ms.

The below c function block is for getting/reset D/I counters at slot 0.

Parameters:

RS1_ ~ RS8_ boolean Reset the associated D/I counter when rising from False to True

Return:

Q_ boolean work ok. : TRUE. If Q_ is FALSE , it means “No parallel D/I module found at slot 0 ”
 CN1_ ~ CN8_ integer DI Counter value of channel No. 1 to 8. Valid value is ranging from 0 to 2,147,483,647. If value is over 2,147,483,647, it restarts at 0.

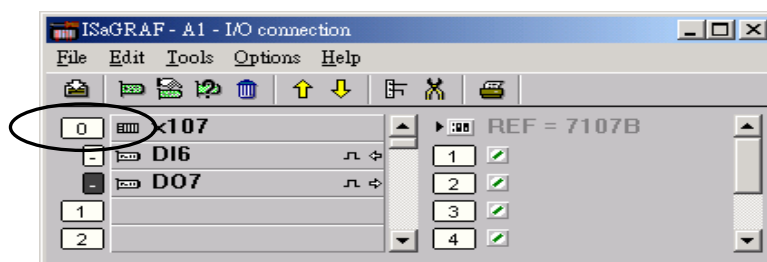
Di_Cnt	
	Q_
RS1_	CN1_
RS2_	CN2_
RS3_	CN3_
RS4_	CN4_
RS5_	CN5_
RS6_	CN6_
RS7_	CN7_
RS8_	CN8_

Note:

Only Parallel D/I board plug in slot 0 support “Di_Cnt”, not for other slots.

Only the first 8 D/I channel support “Di_Cnt”.

I-7188EG/XG must connect the X??? board at slot 0, or the “Di_Cnt” will not work.



Demo: Please refer to I-8417/8817/8437/8837's demo_52 & demo_53.