

如何使用 Proface 的人機介面 (Touch-Panel HMI) 來連接 I-7188EG/XG , I-8xx7 與 Wincon-8xx7 等 ISaGRAF 控制器 ?

通訊線接腳:

I-7188 COM1 & I-8000 COM1 (RS-232)

9-Pin Dsub Male

2 TXD
3 RXD
5 GND

Proface HMI (RS-232)

25-Pin Dsub Male

2 TXD
3 RXD
7 GND
4 RTS
5 CTS

Wincon COM2 (RS232)

9-Pin Dsub Female

2 RXD
3 TXD
5 GND

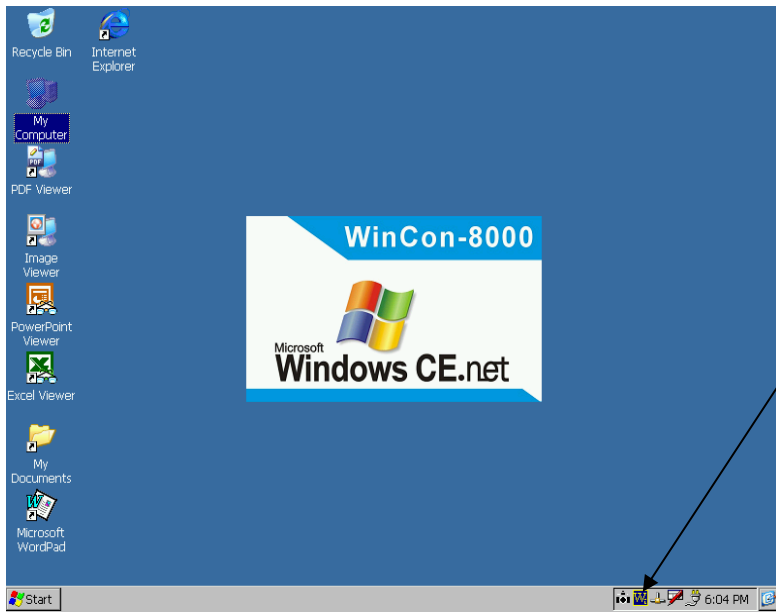
Proface HMI (RS-232)

25-Pin Dsub Male

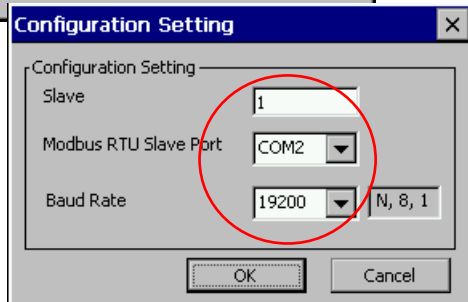
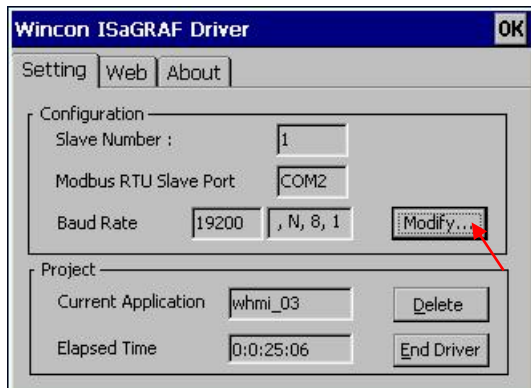
2 TXD
3 RXD
7 GND
4 RTS
5 CTS

注意:

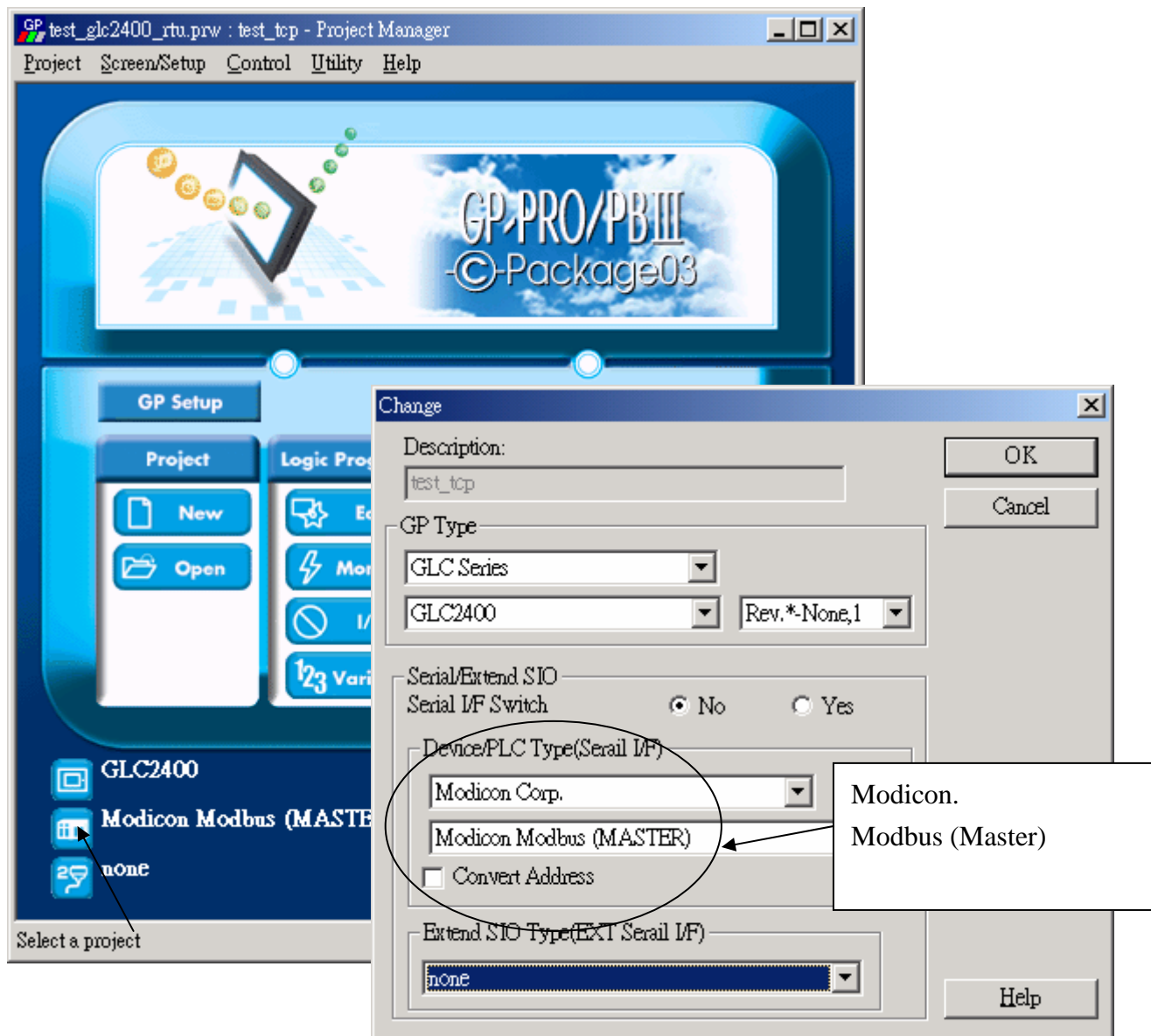
1. I-8417/8817 的 COM1:RS232 與 COM2:RS485 出貨時內定支持 Modbus RTU Slave 規約 (19200, 8, N,1)
2. I-8437/8837 的 COM1:RS232 出貨時內定支持 Modbus RTU Slave 規約 (19200, 8, N,1)
3. I-7188EG的COM1:RS232 與 I-7188XG的COM1:RS232/485 出貨時內定支持 Modbus RTU Slave 規約 (19200, 8, N,1)
4. W-8xx7 出貨時並未啓用 Modbus RTU Slave 串口, 若想使用, 請先在 Wincon 上啓用它 (如下圖)



先在 W-8xx7 螢幕上點選 "W"，
之後啓用 COM2 (RS232) 或
COM3 (RS485)
"Slave_Number" 指的是 W-8xx7
的站號，出貨時內定是 1 號



Proface 人機介面軟體的 Device/PLC Type Setting:



Communication Setting:

The image shows a screenshot of the 'GP Setup' software interface. The main window is titled 'GP test_glc2400_rtu.prw : test_top - Project Manager'. The interface includes a menu bar (Project, Screen/Setup, Control, Utility, Help) and a central workspace with various icons and buttons. A 'GP Setup' button is highlighted with an arrow. Below it, there are sections for 'Project' (New, Open) and 'Logic Program' (Edit, Monitor, Variable). At the bottom, there are project names: 'GLC2400', 'Modicon Modbus (MASTER)', and 'none'. A 'GP Setup information' section is visible at the bottom left.

Overlaid on the main window is the 'GP Settings - test_glc2400_rtu.prw' dialog box. This dialog has three tabs: 'GP Settings', 'I/O Settings', and 'Mode Settings'. The 'Communication Settings' sub-tab is active. The settings are as follows:

- RS-232C / RS-422:** RS-232C, 4 Line, 2 Line
- Transmission Speed:** 19200
- Data Length:** 7 Bits, 8 Bits
- Parity Bit:** None, Odd, Even
- Stop Bit:** 2 Bit, 1 Bit
- Busy Ready Control:** X-ON / OFF, DTR / ER
- RI/VCC:** RI, VCC

An 'Advanced ...' button is located below the Parity Bit and Stop Bit settings. At the bottom of the dialog are buttons for '確定' (OK), '取消' (Cancel), 'Defaults', and 'Help'.

A text box in the bottom right of the dialog contains the following text:

RS-232C , 19200, 8, N, 1
要設為 DTR / ER (因此才
把第一頁的 Proface HMI 的
Pin 4 - 5 接腳短接)

Mode Setting:

The screenshot shows the GP PRO/PBIII software interface. The main window is titled "GP test_glc2400_rtu.prw : test_top - Project Manager". The "GP Settings - test_glc2400_rtu.prw" dialog box is open, showing the "Mode Settings" tab. The "Mode Settings" tab includes the following fields and options:

- PLC Type: Modicon Modbus (MASTER)
- System Start Address: 400001
- Machine Number: 1
- Read Area Size: 1
- Link Protocol Type: 1:1 n:1
- Node Setup:
 - Node Number: 0
 - Transmission Status: 400001

Buttons: Customize ..., Option ...

Buttons at the bottom: 確定, 取消, Defaults, Help

Callout box text:

System Start Address 需設為 400001
Machine Number 為控制器的站號. 出貨時內定是 1 號.

互傳的資料的 Modbus Network Address Mapping:

	Proface HMI	i-7188EG/XG , i-8xx7	W-8xx7
讀 / 寫 Word	400001 ~ 40xxxx	1 ~ 4095	1 ~ 8191
讀 / 寫 Bit	000001 ~ 00xxxx	1 ~ 4095	1 ~ 8191

比如:

	Proface HMI	i-7188EG/XG , i-8xx7	W-8xx7
讀 Word	400007	7	7
寫 Word	400012	12	12
讀 Bit	000001	1	1
寫 Bit	000002	2	2

若要傳遞 長整數 或 實數, 請參考 “ISaGRAF 進階使用手冊” 內的第 4.2 與 4.1 節. 放於

“Chinese_User_Manual_I_8xx7.pdf” 位於 :

i-8000 CD-ROM:\napdos\isagraf\8000\chinese_manu\ 或

W-8xx7 CD-ROM:\napdos\isagraf\wincon\chinese_manu\ 或

ftp://ftp.icpdas.com/pub/cd/wincon_isagraf/napdos/isagraf/wincon/chinese_manu/