

## Chapter 3: Setting Up A Web HMI Demo

**Important:** Please always set a **fixed IP** address to the Wincon. (No more DHCP)  
 Please always set W-8x47/8x46's LAN2 as disabled if not using it (refer to appendix D).  
 Please use NS-205 or NS-208 Industrial Ethernet Switch for Wincon-8x46/8x47.

### 3.1: Web Demo List

The Web page location:

Wincon ISaGRAF CD-ROM: \napdos\isagraf\wincon\WebHMI\_Demo\

The respective ISaGRAF project location:

Wincon ISaGRAF CD-ROM: \napdos\isagraf\wincon\demo\

New demo will be found at

[ftp://ftp.icpdas.com/pub/cd/wincon\\_isagraf/napdos/isagraf/wincon/webhmi\\_demo/](ftp://ftp.icpdas.com/pub/cd/wincon_isagraf/napdos/isagraf/wincon/webhmi_demo/) and  
[ftp://ftp.icpdas.com/pub/cd/wincon\\_isagraf/napdos/isagraf/wincon/demo/](ftp://ftp.icpdas.com/pub/cd/wincon_isagraf/napdos/isagraf/wincon/demo/)

Demo list:

Name	Description	IO board
sample	A Web HMI sample	No I/O board
example1	A simple example listed in Chapter 4	slot 1: I-8077
whmi_01	Display controller's date & time	No I/O board
whmi_02	DI & DO demo	slot 1: I-8077
whmi_03	Read / Write Long, float & Timer value	No I/O board
whmi_04	Read / Write controller's String	No I/O board
whmi_05	Multi-Pages demo (slot 1: I-8077) Page menu is on the Left	slot 1: I-8077
whmi_05a	Multi-Pages demo (slot 1: I-8077) Page menu is on the Top	slot 1: I-8077
whmi_06	AIO demo, scaling is in ISaGRAF	slot 2: I-87024 , slot 3: I-8017H
whmi_07	AIO demo, scaling is in PC	slot 2: I-87024 , slot 3: I-8017H
whmi_08	download controller's file to PC	slot 1: I-8077
whmi_09	pop up an alarm window on PC	slot 1: I-8077
whmi_11	Trend curve.	slot 2: I-87024 , slot 3: I-8017h
whmi_12	Record i-8017H Ch1 to 4 every 0.05 second (max. sample rate is 20 Hz) to a Ram Disk File in W-8xx7's "\Web_Data1\" folder. Recording time is 1 to 10 minute and then PC can download this file and draw trend curve in M.S. Excel	slot 2: I-87024 slot 3: I-8017h
whmi_13	Record i-8017H Ch1 to 4 every 0.01 second (max. sample rate is 100 Hz) to a user allocated Ram Space. When all record is finished, save these record to a Ram Disk File in W-8xx7's "\Web_Data1\" folder. Recording time is 1 to 10 minute and then PC can download this file and draw trend curve in M.S. Excel	slot 2: I-87024 slot 3: I-8017h

## 3.2: Steps To Set Up A Web HMI Demo

### 3.2.1: Step 1 - Setup The Hardware

A. Please have a W-8337/8737 or W-8347/8747 & plug one I-8077 board in its slot 1 for this demo - "Whmi\_05".

If you don't have the I-8077 (8 IN & 8 OUT simulation board), please follow the same steps as below however your Web HMI demo may be replaced to "whmi\_01" not "whmi\_05"

B. Prepare one VGA monitor, one USB mouse, one Keyboard and one ethernet cable and then connect them to the Wincon.

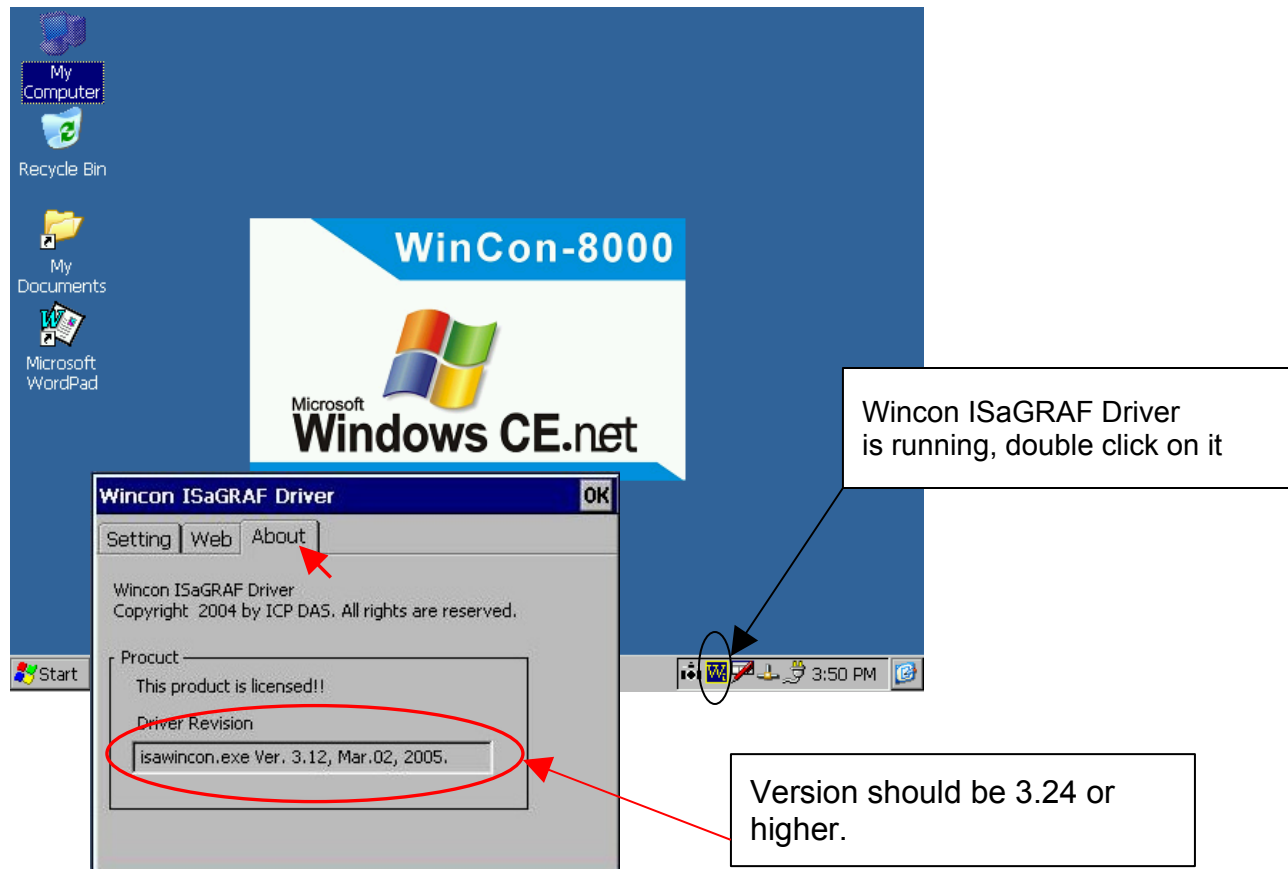
C. Power the Wincon up.

### 3.2.2: Step 2 - Make Sure The Right ISaGRAF Driver Installed

To run a Web HMI Demo, please make sure the ISaGRAF driver installed in the Wincon-8x37/8x47 is version 3.24 or high. If the version is lower than 3.24, please upgrade it. The procedure is listed in Appendix B or in the CD-ROM:

Wincon ISaGRAF CD: \napdos\isagraf\wincon\english\_manu\ "Update\_w8xx7.pdf"

Note: If you have upgraded the driver, please recycle the power of your Wincon.

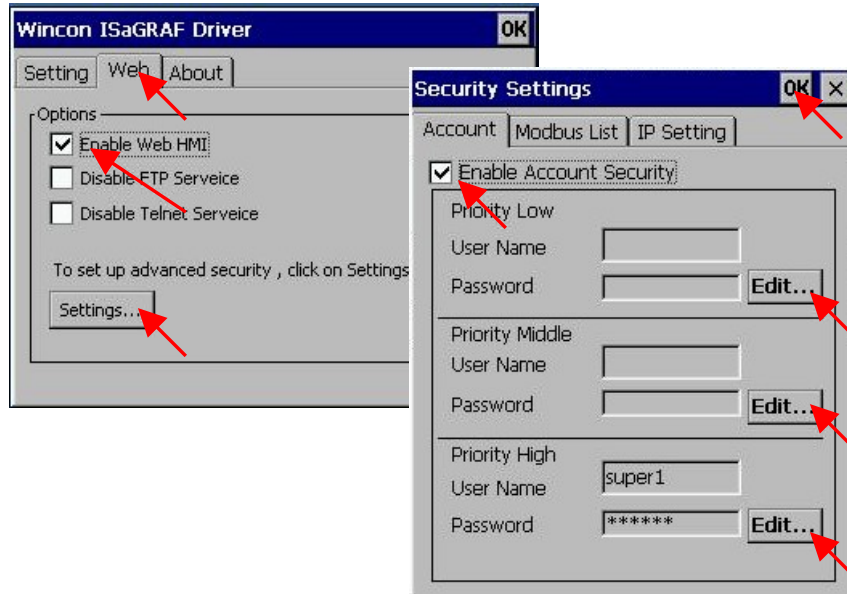


### 3.2.3: Step 3 - Setting The Web Options

A. Please set a **fixed IP** address to the Wincon. (No more DHCP)

B. Check on “Enable Web HMI” and then click on “Setting”, Please check on “Enable Account Security” and then click on “Edit” to set (username , password). **Then remember to click on “OK”**

**Note: If “Enable Account Security” is not check, any user can easily get access to your Wincon through the Internet Explorer.**



### 3.2.4: Step 4 - Download ISaGRAF Project

Please download ISaGRAF project “whmi\_05” to the W-8X37/8X47. This project is in the CD-ROM:\napdos\isagraf\wincon\demo\ “whmi\_05.pia”

whmi\_05 demo need one I-8077.If you don't have the I-8077 (8 IN & 8 OUT simulation board), you may download “whmi\_01” (CD-ROM:\napdos\isagraf\wincon\demo\ “whmi\_01.pia”)

If you know how to restore “whmi\_05.pia” to your ISaGRAF Workbench and download it to the controller, please go ahead to section 3.2.5.

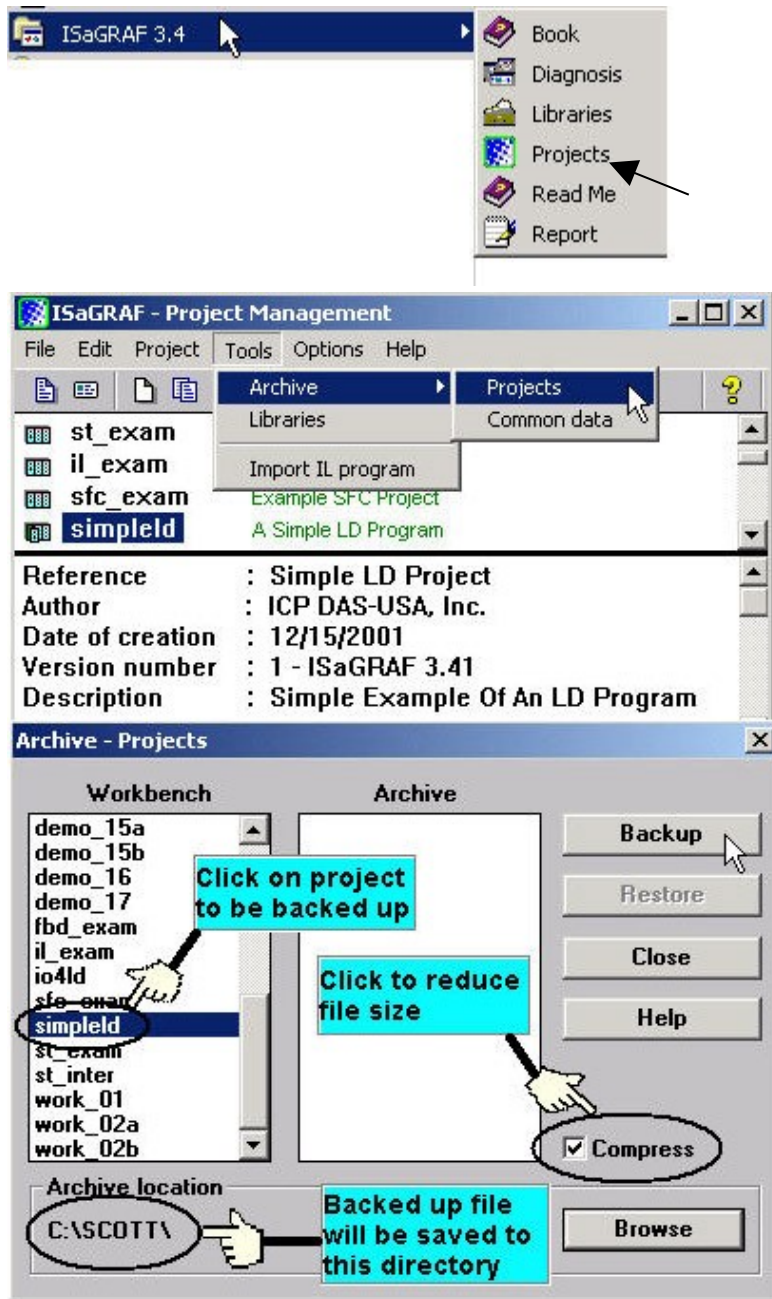
However if you don't know it, please refer to the below steps. Please make sure the ISaGRAF Workbench is already installed to your PC. (refer to section 2.1 & 2.2)

#### Steps To Backing Up & Restoring An ISaGRAF Project:

For archiving purposes you can "Back Up" and "Restore" an ISaGRAF project. For example, you may want someone to test your program or email to [service@icpdas.com](mailto:service@icpdas.com) for ICP DAS's ISaGRAF technical service.

## Backing Up An ISaGRAF Project

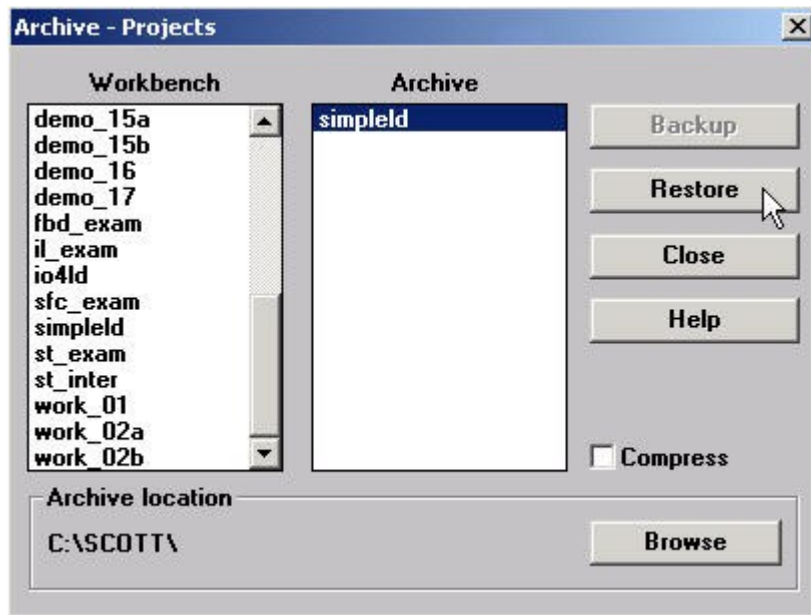
Open the "ISaGRAF Project Management" , select "Tools" from the menu bar, click on "Archive", and then click on "Projects". An "Archive Projects" window will open which allows you to designate where you want to save the ISaGRAF project to. Click on the name of the ISaGRAF project you want to backup, and then click on the "Backup" button. You can compress the size of the file you have backed up by clicking on the "Compress" checkbox BEFORE you click on the "Backup" button.



You will now find the backed up ISaGRAF project file in the "Archive" location you have designated. In the example above, the name of the backed up file is "simpleld.pia".

## Restoring An ISaGRAF Project

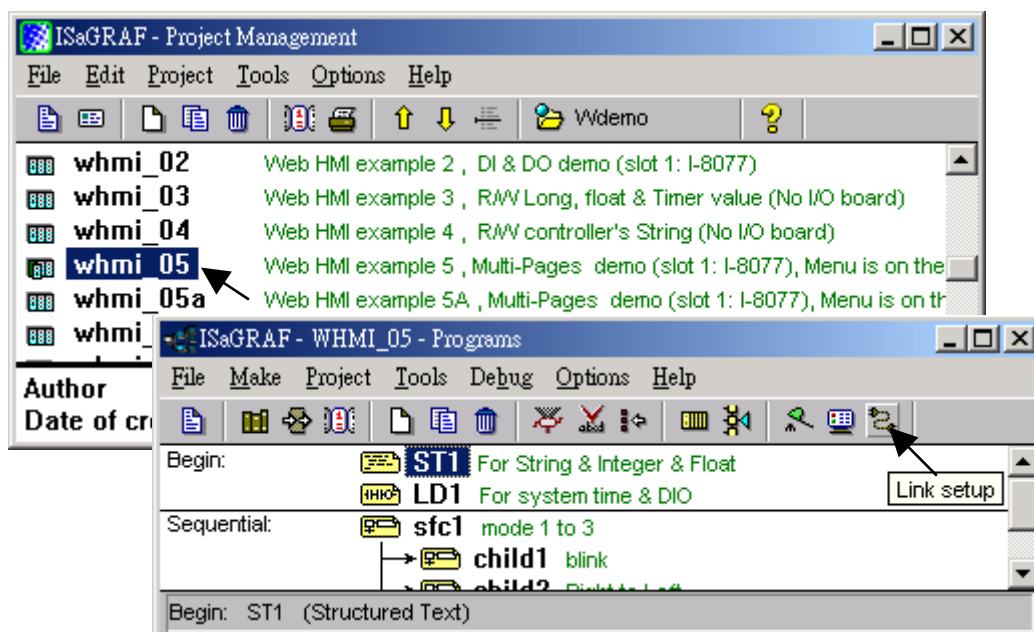
To restore an ISaGRAF project from a backed up file (\*.pia), use the same method as above to access the "Archive Projects" window, click on the name of the project you want to restore from the "Workbench" window, then click on the name of the backed up file from the "Archive" window, then click on the "Restore" button. The ISaGRAF project will now be restored to the sub-directory you designated.



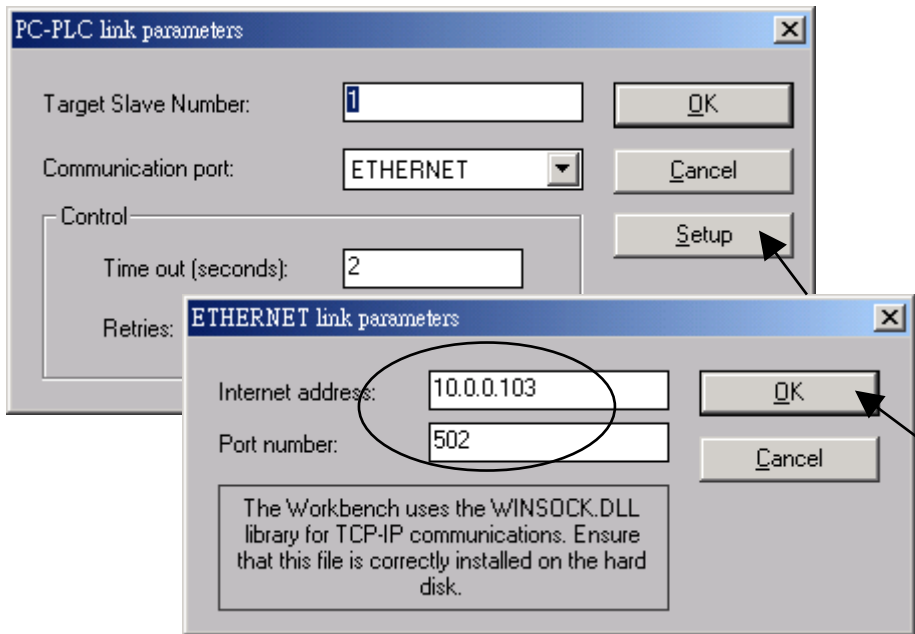
You can now open, edit and download the restored ISaGRAF project file.

### 3.2.4.1: Steps To Download a ISaGRAF Project To The Controller:

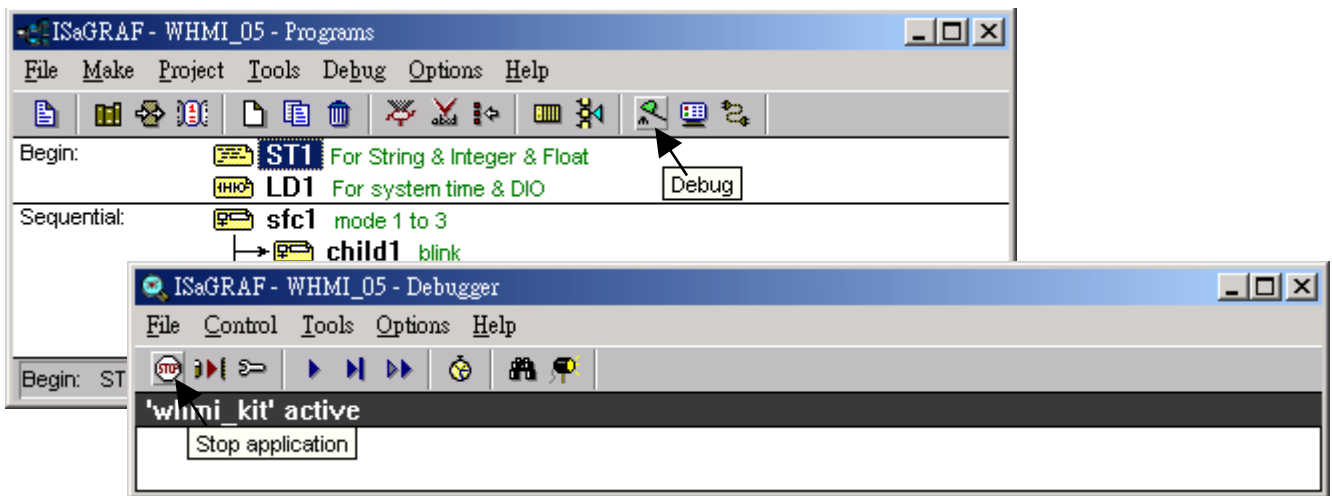
Double click on the "whmi\_05" to get into the project. Then click on "Link setup".



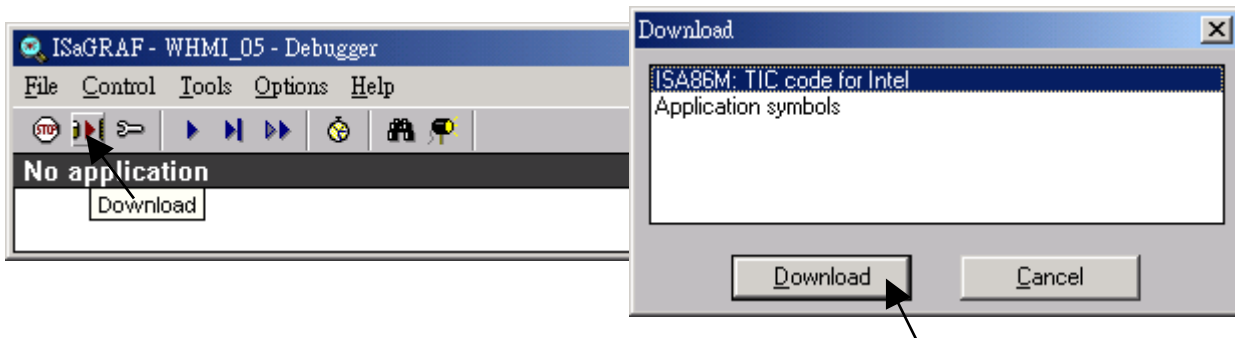
Click on “Setup” first and then entering the IP address of your controller. The port number should be 502.



To download “whmi\_05” project to the Wincon-8xx7, Click on “Debug” . If the communication is established, click on “stop” first to stop the old project running in the W-8xx7.



Then click on “Download” to download it to the controller.





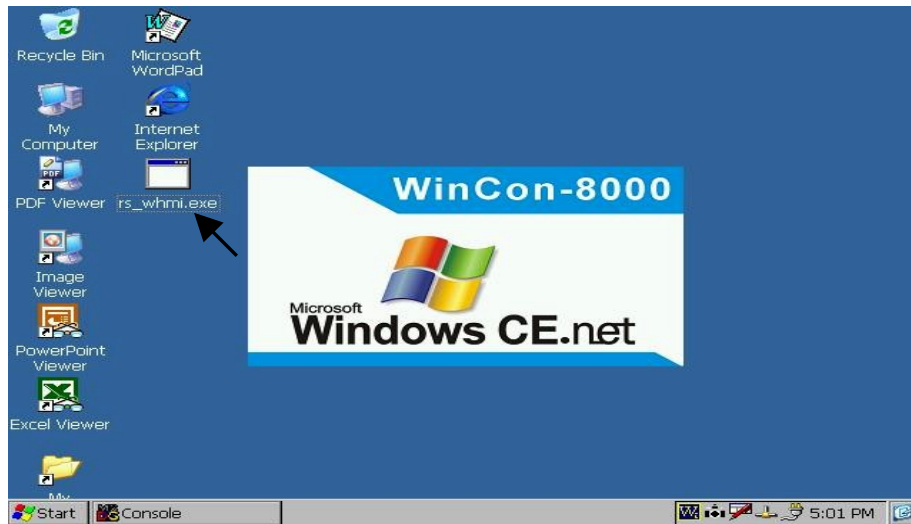
### 3.2.5: Step 5 - Download Web Pages To The Wincon

Please copy all files in the CD-ROM:

Wincon ISaGRAF CD: \napdos\isagrafwincon\WebHMI\_demo\whmi\_05\ \*.\*  
to the W-8X37/8X47's CompactFlash\Temp\HTTP\WebHMI\

whmi\_05 demo need one I-8077.If you don't have the I-8077 (8 IN & 8 OUT simulation board), you may download "whmi\_01" (CD-ROM:\napdos\isagrafwincon\WebHMI\_demo\whmi\_01\)

B. Since the Web Pages are modified or new copied, please run "rs\_whmi.exe" to reset the Web server. **The "rs\_whmi.exe" must be run every time when user has modified any file in the W-8xx7's CompactFlash\Temp\HTTP\WebHMI**



### 3.2.6: Step 6 - Show Time

Please run Internet Explorer (Rev. 6.0 or higher), key in the IP address of your W-8xx7. For example: 61.218.42.10 or http://61.218.42.10

