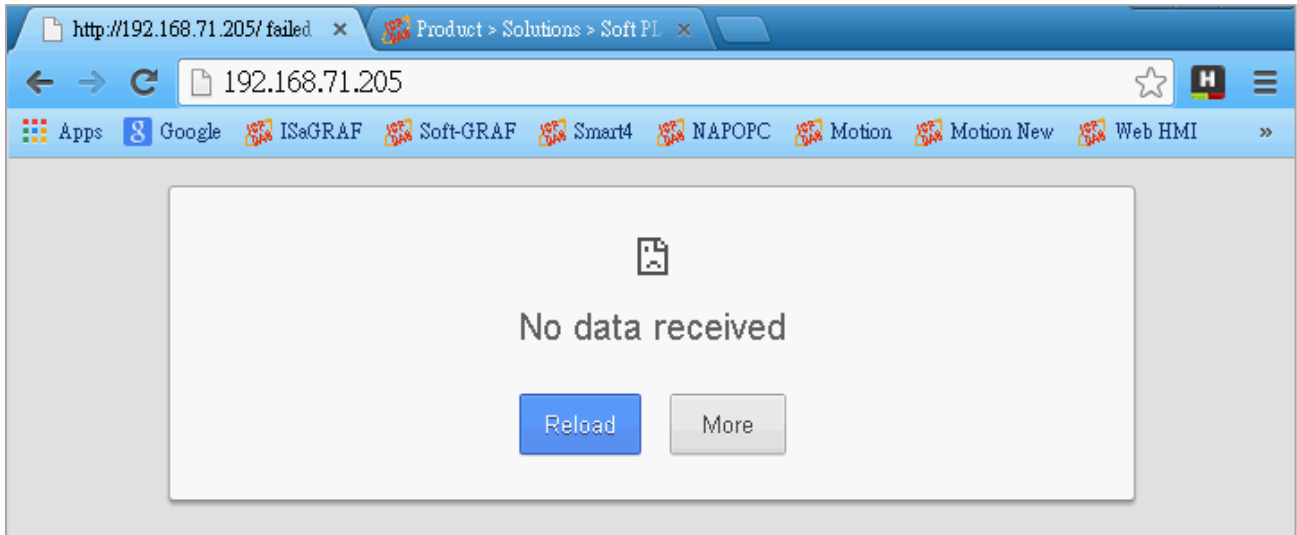


Classification	ISaGRAF English FAQ-173						
Author	Janice Hong	Version	1.0.0	Date	Jan. 2014	Page	1/9

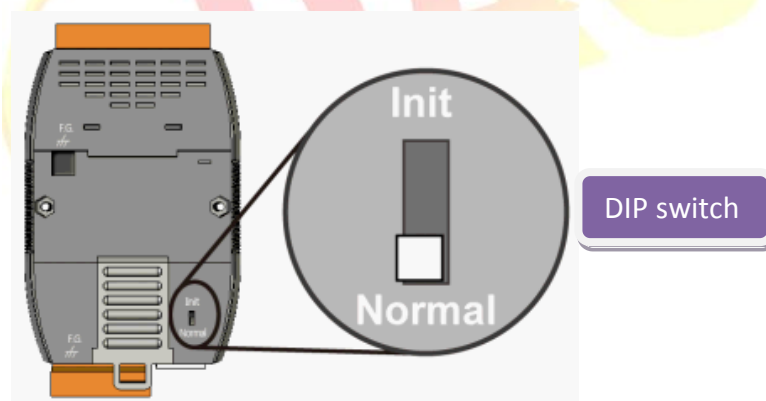
## Why can't I connect to the ET-7000 web page using a web browser?

### 1.1. Description

Why isn't a connection established when I type the IP address (e.g., 192.168.71.205) of the ET-7000 series module into the web browser?



To resolve this problem, first make sure that the DIP switch is set to the "Normal" position.



Refer to the [PET-7000/ET-7000 Series Quick Start Guide](#) to ensure that the configuration for the module has been completed correctly. The Quick Start Guide can be downloaded from:

[http://ftp.icpdas.com/pub/cd/6000cd/napdos/et7000\\_et7200/document/pet\\_et7000\\_quickstart\\_guide\\_en.pdf](http://ftp.icpdas.com/pub/cd/6000cd/napdos/et7000_et7200/document/pet_et7000_quickstart_guide_en.pdf)

Classification	ISaGRAF English FAQ-173						
Author	Janice Hong	Version	1.0.0	Date	Jan. 2014	Page	2/9

## 1.2. Troubleshooting

If your computer has Internet access, there may be two reasons for this behavior, as described below.

1. The **Web Server TCP Port** (Default: Port 80, Range: 1 ~ 65535), shown on the **Basic Settings** page, has been changed.

Note: If the default TCP Port is not used (i.e., TCP Port 125), ensure that the Port number is included in the address entered in the web browser (i.e., "192.168.71.205:125").

**Basic Settings**

Module Name: PET-7026

Module Information:  *Maximum*

Page Header Information (First line): ICP DAS *Maximum*

Color: Red Font Size: 7

Page Header Information (Second line): http://www.icpdas.com

Color: Red Font Size: 4

More Information URL: http://www.icpdas.com/products/Remote\_IO/et-7000

**Web Server Port**: 125

Modbus TCP Port: 502

Modbus TCP Port (WAN): 502 *This setting can be ignored*

Submit

2. The **IP Filter Settings** function may be enabled and the IP address of your computer is not within the valid range. For example, if the valid range is from 192.168.71.1 to **200**, then you will be unable to connect to the ET-7000 web page using the IP Address "192.168.71.**201**" or "192.168.**88.8**".

**IP Filter Settings**

Enable the IP filter table. (Note: By leaving this unchecked, the filter table will be disabled, which will allow co

IP address of the local PC: 192.168.78.88

No.	Activate	From (IP Address)	To (IP Address)
1	<input checked="" type="checkbox"/>	192.168.71.1	192.168.71.200
2	<input type="checkbox"/>	<input type="text"/>	<input type="text"/>
3	<input type="checkbox"/>	<input type="text"/>	<input type="text"/>
4	<input type="checkbox"/>	<input type="text"/>	<input type="text"/>
5	<input type="checkbox"/>	<input type="text"/>	<input type="text"/>
6	<input type="checkbox"/>	<input type="text"/>	<input type="text"/>

Submit

Classification	ISaGRAF English FAQ-173						
Author	Janice Hong	Version	1.0.0	Date	Jan. 2014	Page	3/9

### 1.3. Download Files

To download the files related to this FAQ, go to:

[ISaGRAF Web Page](#) > Download – [FAQ](#) > FAQ-173 or  
<http://www.icpdas.com/faq/isagraf/173.htm>.

Unzip the download file (i.e., faq\_173.zip) to a folder on the Windows Desktop or any other convenient location. The “faq\_173” folder includes this PDF file and related files (i.e., Set\_ET-7000\Set\_P80\SetP80.exe and Set\_ET-7000\Set\_IP\_Filter\setdef.exe), which can be used to reset the “Web Server TCP Port” and the “IP Filter Settings” to the default settings.

#### Related Reading:

✚ Refer to the following manuals for more details about configuring the PET-7000/ET-7000:

[http://ftp.icpdas.com/pub/cd/6000cd/napdos/et7000\\_et7200/document/](http://ftp.icpdas.com/pub/cd/6000cd/napdos/et7000_et7200/document/)

> PET-7000/ET-7000 Series Quick Start Guide

> PET-7000/ET-7000 Series User Manual

✚ PET-7000/ET-7000 Selection Guide

[ICP DAS Web Site](#) > [Product](#) > [Solutions](#) > [Remote I/O modules/Units](#) > [Ethernet I/O](#)

✚ MiniOS7 Utility

[http://ftp.icpdas.com/pub/cd/8000cd/napdos/minios7/utility/minios7\\_utility/](http://ftp.icpdas.com/pub/cd/8000cd/napdos/minios7/utility/minios7_utility/)

#### Further Reading:

✚ ISaGRAF FAQ-113:

Linking an ISaGRAF PAC to TCP/IP Slave devices using the Modbus TCP Master Protocol.

[ISaGRAF Web Page](#) > Download – [FAQ](#) > FAQ-113.

✚ ISaGRAF Web Page:

[ICP DAS Web Site](#) > [Product](#) > [Solutions](#) > [Soft PLC, ISaGRAF & Soft-GRAF HMI](#) > [ISaGRAF](#)

Classification	ISaGRAF English FAQ-173						
Author	Janice Hong	Version	1.0.0	Date	Jan. 2014	Page	4/9

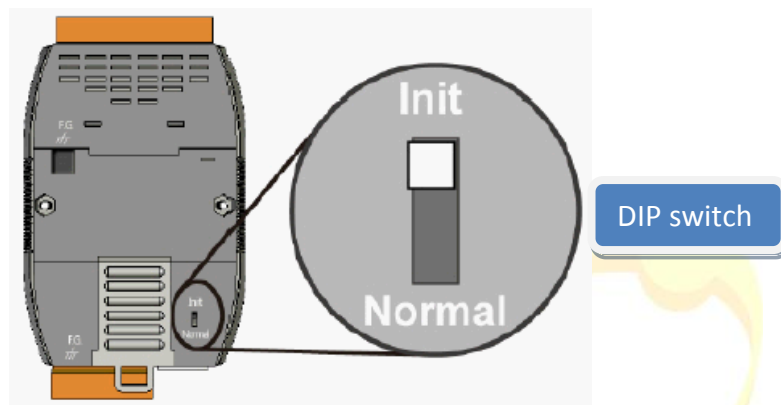
## 1.4. Solution

### 1.4.1. Reset the “Web Server TCP Port” to the default settings

If the TCP Port number is unknown or has been forgotten, the "[SetP80.exe](#)" application can be used to reset it to Port 80.

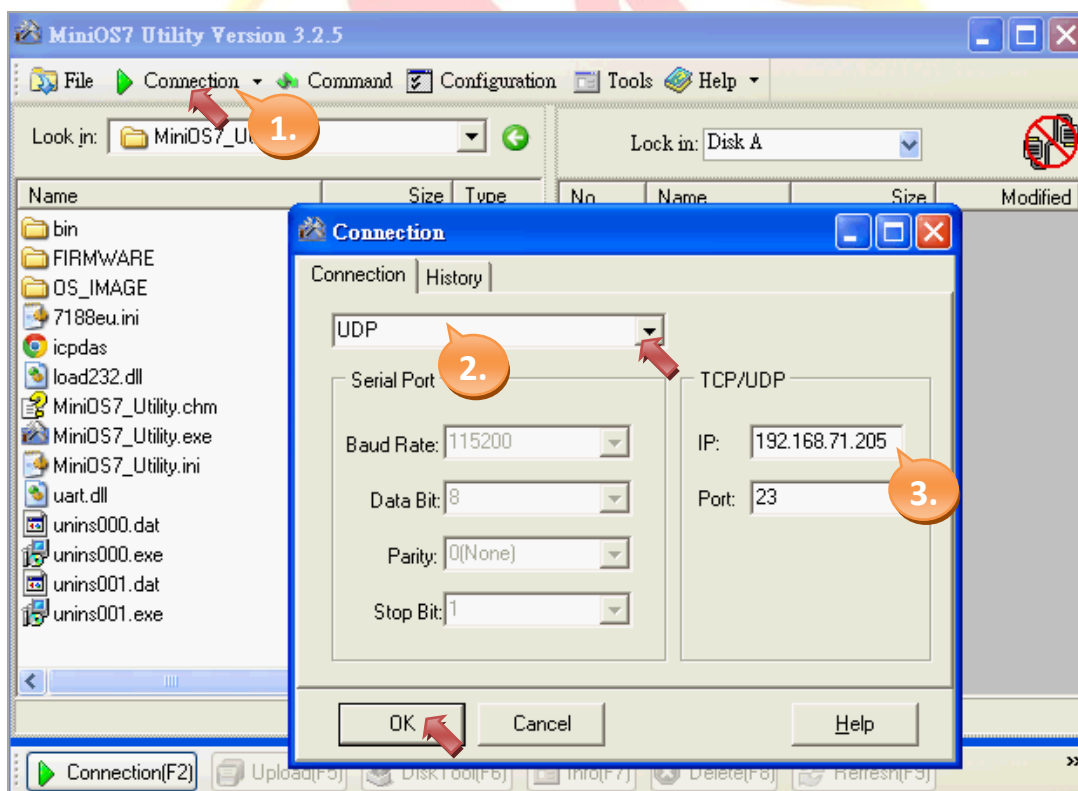
To reset the “Web Server TCP Port” to the default settings, follow the procedure described below.

Step 1: Move the DIP switch to the “Init” position, and then reboot the ET-7000 module.



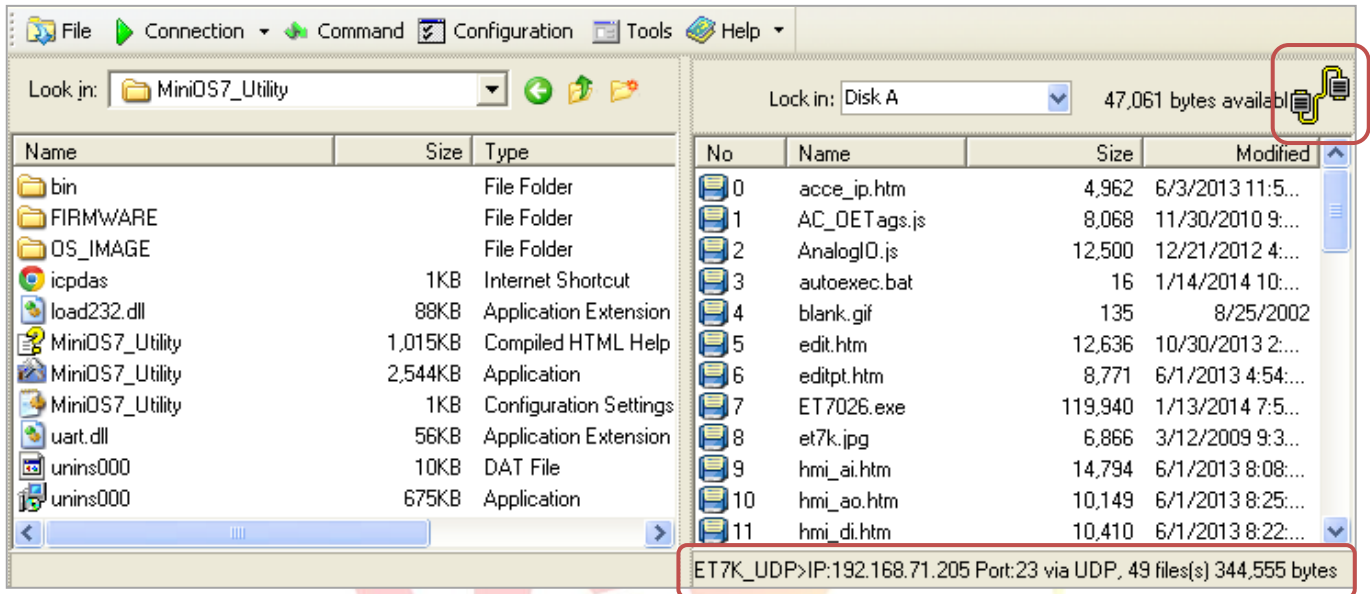
Step 2: Run the [MiniOS7 Utility](#) and connect to the ET-7000 module via a **UDP** connection.

Click the “Connection” button and select the “UDP” option from the drop-down menu, then type the IP address of the ET-7000 module and click the “OK” button.

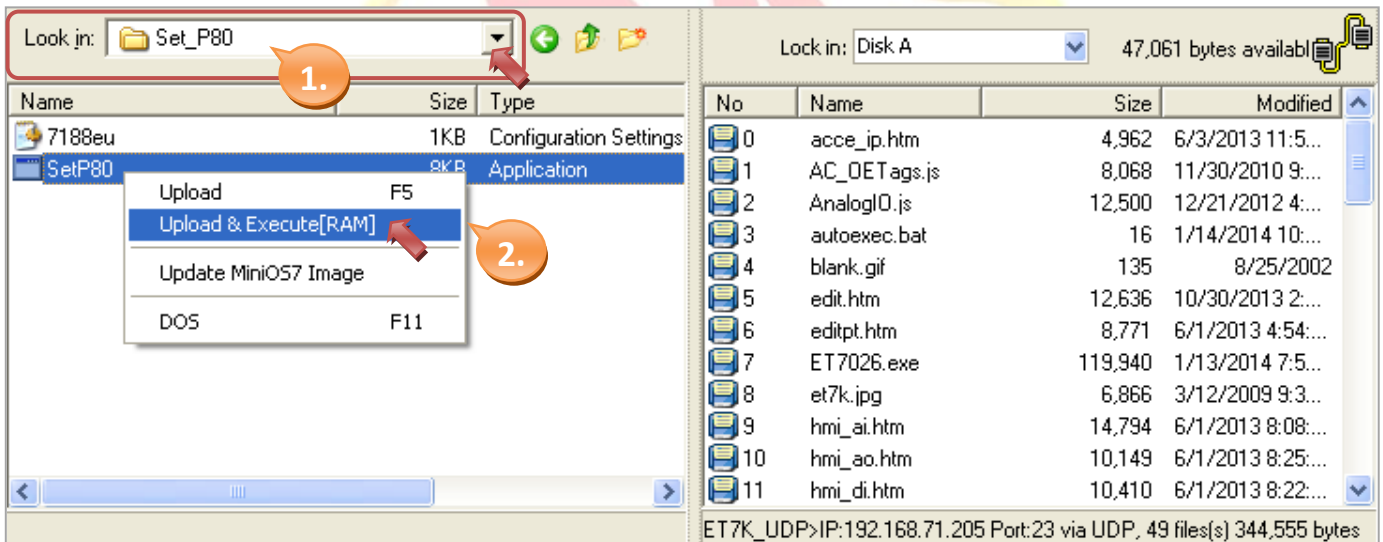


Classification	ISaGRAF English FAQ-173						
Author	Janice Hong	Version	1.0.0	Date	Jan. 2014	Page	5/9

As indicated in the figure below, the UDP connection has been successfully established.



Step 3: From the "Look in" drop-down menu in the left-hand window, change the path to "Set\_ET-7000\Set\_P80". Right-click the "SetP80.exe" file name, and then click the "Upload & Execute [RAM]" option to run the application.



If the procedure is successfully completed, a DOS window will be displayed, as shown below.

Classification	ISaGRAF English FAQ-173						
Author	Janice Hong	Version	1.0.0	Date	Jan. 2014	Page	6/9

```

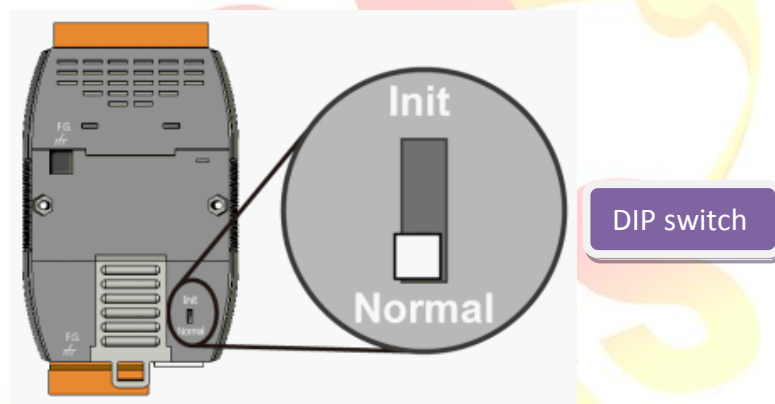
C:\ [UDP]Connect to 192.168.71.205:23 path=C:\Documents and Settings...
AutoRun:SetP80.exe
Autodownload files: None

Current work directory="C:\Documents and Settings\Janice\
0"
[Begin Key Thread...]
ET7K_UDP>

ET7K_UDP>runr
Port 125 -> Port 80

```

Step 4: Move the DIP switch to the “Normal” position, and then reboot the ET-7000 module.



Step 5: Open a web browser and type the IP address of the ET-7000 series module (e.g., 192.168.71.205) into the address bar, then enter the User name (Default: Admin) and Password (Default: Admin) in the login dialog box to access the web configuration page.

✕

Authentication Required

The server http://192.168.71.205:80 requires a username and password. The server says: PET-7026.

User Name:

Password:

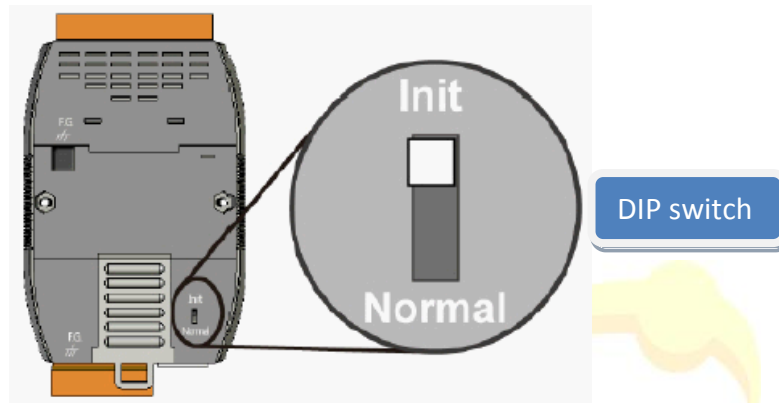
Classification	ISaGRAF English FAQ-173						
Author	Janice Hong	Version	1.0.0	Date	Jan. 2014	Page	7/9

#### 1.4.2. Reset the “IP Filter Settings” to the default settings

If the IP Filter Settings have been enabled and the valid range is unknown or has been forgotten, the "[setdef.exe](#)" application can be used to reset the range to the default settings (i.e., Disabled).

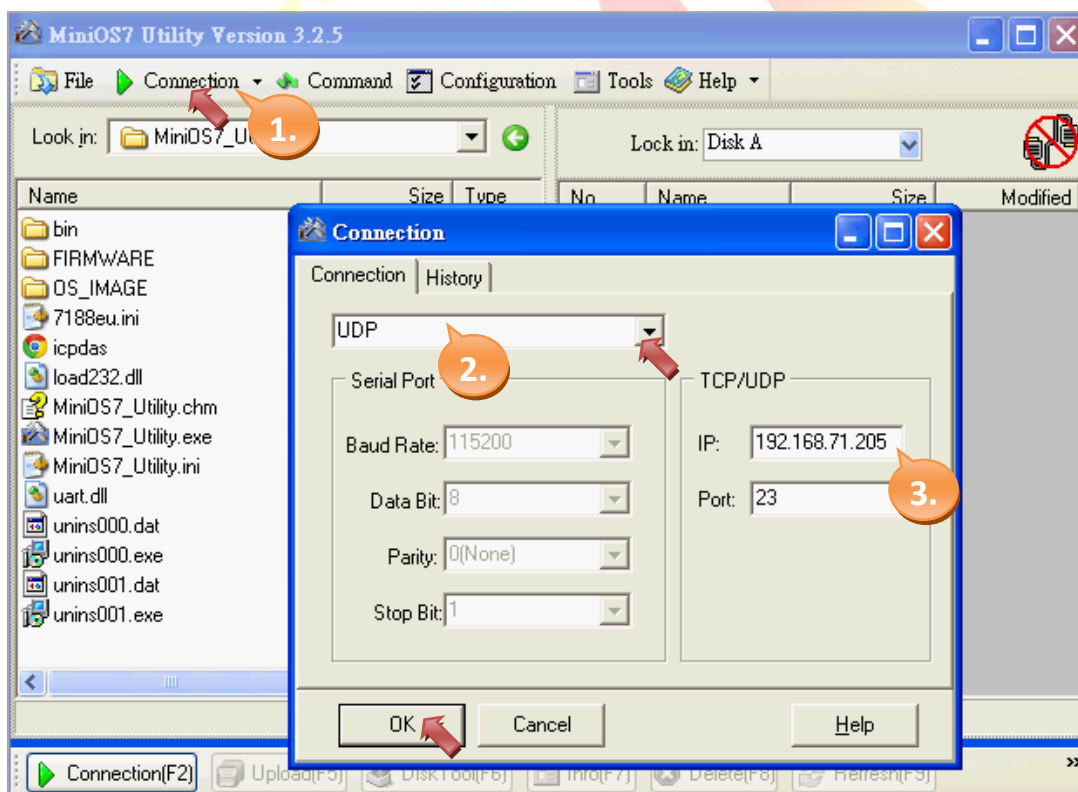
To reset the “IP Filter Settings” to the default settings, follow the procedure described below.

Step 1: Move the DIP switch to the “Init” position, and then reboot the ET-7000 module.



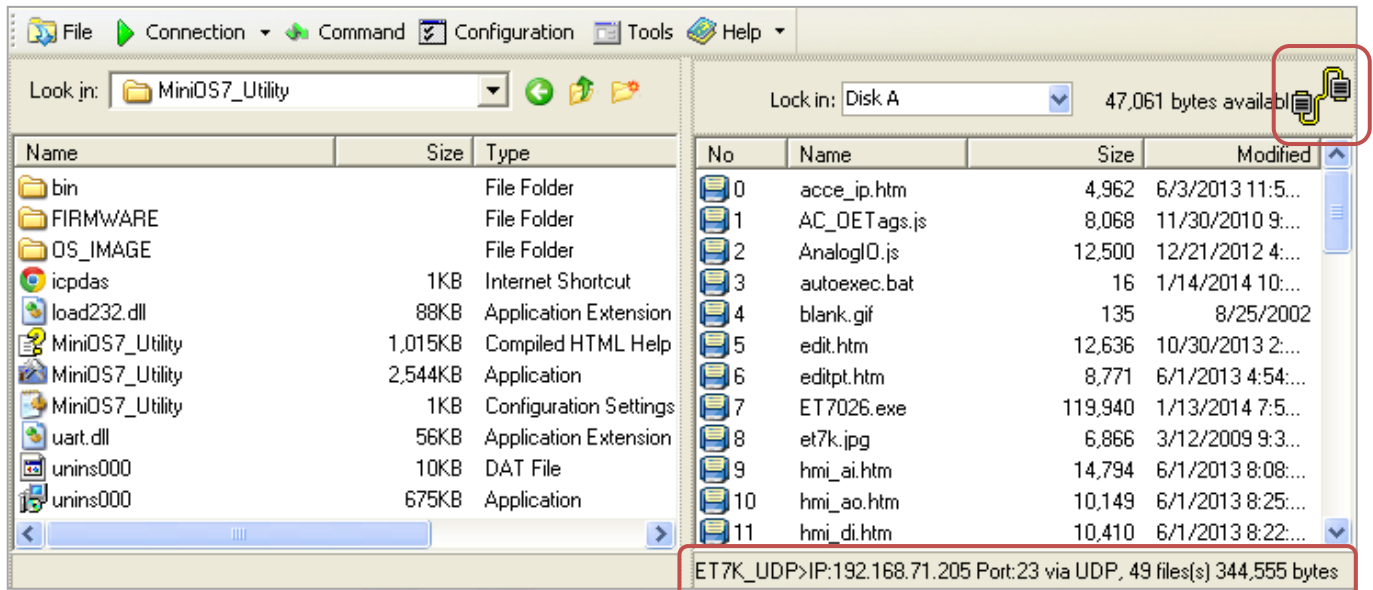
Step 2: Run the [MiniOS7 Utility](#) and connect to the ET-7000 module via a **UDP** connection.

Click the “Connection” button and select the “UDP” option from the drop-down menu, then type the IP address of the ET-7000 module and click the “OK” button.

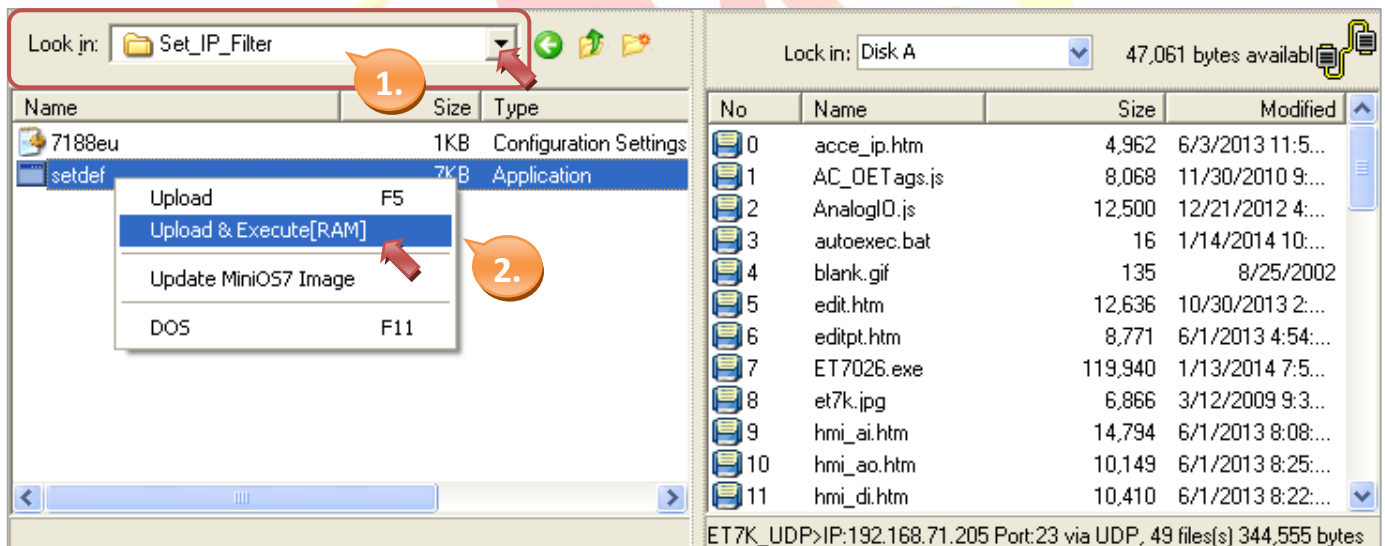


Classification	ISaGRAF English FAQ-173						
Author	Janice Hong	Version	1.0.0	Date	Jan. 2014	Page	8/9

As indicated in the figure below, the UDP connection has been successfully established.



Step 3: From the "Look in" drop-down menu in the left-hand window, change the path to "Set\_ET-7000\Set\_IP\_Filter". Right-click the "setdef.exe" file name, and then click the "Upload & Execute [RAM]" option to run the application.



If the procedure is successfully completed, a DOS window will be displayed, as shown below.



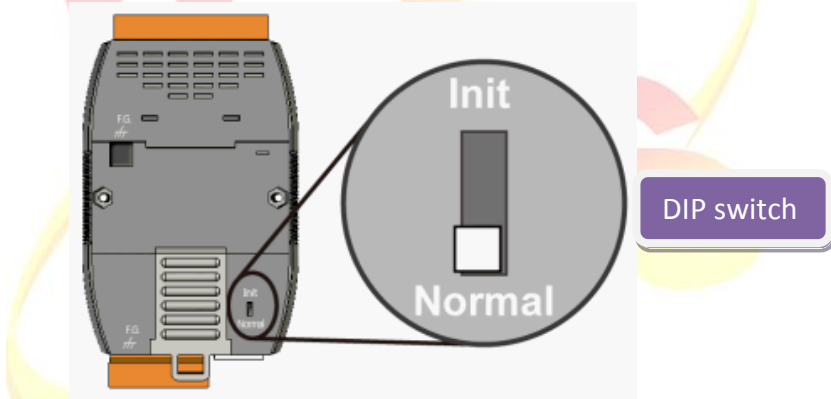
Classification	ISaGRAF English FAQ-173						
Author	Janice Hong	Version	1.0.0	Date	Jan. 2014	Page	9/9

```

C:\ [UDP]Connect to 192.168.71.205:23 path=C:\Documents and Settings\Administrator\Desk...
Autodownload files: None
Current work directory="C:\Documents and Settings\Administrator\Desktop\Set_ET-000\Set_IP_Filter"
[Begin Key Thread...]
ET7K_UDP>
ET7K_UDP>runnr
<128>:192 [C0] 168 [A8] 71 [47] 200 [C8] 192 [C0] 168 [A8] 71 [47] 1 [01]
<136>: 1 [01] 0 [00] 0 [00] 0 [00] 0 [00] 0 [00] 0 [00] 0 [00] 0 [00] 0 [00] 0 [00]
<144>: 0 [00] 0 [00] 0 [00] 0 [00] 0 [00] 0 [00] 0 [00] 0 [00] 0 [00] 0 [00]
<152>: 0 [00] 0 [00] 0 [00] 0 [00] 0 [00] 0 [00] 0 [00] 0 [00] 0 [00] 0 [00]
<160>: 0 [00] 0 [00] 0 [00] 0 [00] 0 [00] 0 [00] 0 [00] 0 [00] 0 [00] 0 [00]
<168>: 0 [00] 0 [00] 0 [00] 0 [00] 0 [00] 0 [00] 0 [00] 0 [00] 0 [00] 0 [00]
<176>: 0 [00] 0 [00] 0 [00] 0 [00] 0 [00] 0 [00] 0 [00] 0 [00] 0 [00] 0 [00]
<184>: 0 [00] 0 [00] 0 [00] 0 [00] 0 [00] 0 [00] 0 [00] 0 [00] 0 [00] 0 [00]
<192>: 0 [00] 0 [00] 0 [00] 0 [00] 0 [00] 0 [00] 0 [00] 0 [00] 0 [00] 0 [00]
<200>: 0 [00] 0 [00] 0 [00] 0 [00] 0 [00] 0 [00] 0 [00] 0 [00] 0 [00] 0 [00]
<208>: 0 [00] 0 [00] 0 [00] 0 [00] 0 [00] 0 [00] 0 [00] 0 [00] 0 [00] 0 [00]
<216>: 0 [00] 0 [00] 0 [00] 46 [2E] 1 [01] 87 [57]
Reset IP Filter to default settings...ok

```

Step 4: Move the DIP switch to the “Normal” position, and then reboot the ET-7000 module.



Step 5: Open a web browser and type the IP address of the ET-7000 series module (e.g., 192.168.71.205) into the address bar, then enter the User name (Default: Admin) and Password (Default: Admin) in the login dialog box to access the web configuration page.

✕

Authentication Required

The server http://192.168.71.205:80 requires a username and password. The server says: PET-7026.

User Name:

Password: