

Classification	ISaGRAF FAQ					No.	139-e
Author	Eva Li	Version	1.0.0	Date	May, 2011	Page	1/10

How to install/use ISaGRAF 3.55 Demo version and its limitations

● Overview :

The ISaGRAF provides a free demo version of "ISaGRAF 3.55" on the website for one month testing. This article is about how to install and use the "ISaGRAF 3.55 Demo Version", including how to download, install, program and backup. Following the steps below, you can learn about what the ISaGRAF 3.55 demo version can do for you, its limitations and how to backup the project in the demo version to get services from us.

The ISaGRAF 3.55 demo version supports to design the application projects for all series of ICP DAS ISaGRAF PACs, the designed projects can be compiled, made and downloaded to the PAC to run and test. For more information about the ISaGRAF PAC, please refer to the ICP DAS ISaGRAF website.

ISaGRAF PAC Homepage:

<http://www.icpdas.com/products/PAC/i-8000/isagraf.htm>

ISaGRAF PAC Data Sheet:

<http://www.icpdas.com/products/PAC/i-8000/data%20sheet/data%20sheet.htm>

OS Requirements:

One of the following computer operating systems must be installed on the target computer system before you can install the ISaGRAF Workbench software.

- ◆ Windows 98, Windows 2000 or Windows XP
- ◆ Windows NT Version 3.51 or Windows NT Version 4.0
- ◆ Windows Vista (32-bit) or Windows 7 (refer to [FAQ-117](#))

Main Steps:

1. [Download/Install ISaGRAF 3.55 Workbench Demo Version](#)
2. [Download/Install ICP DAS Utility for ISaGRAF](#)
3. [Design the Projects](#)
4. [The Limitations of the Demo Version](#)
5. [How to Backup the Project for Services](#)

Classification	ISaGRAF FAQ					No.	139-e
Author	Eva Li	Version	1.0.0	Date	May, 2011	Page	2/10

1. Download/Install ISaGRAF 3.55 Workbench Demo Version

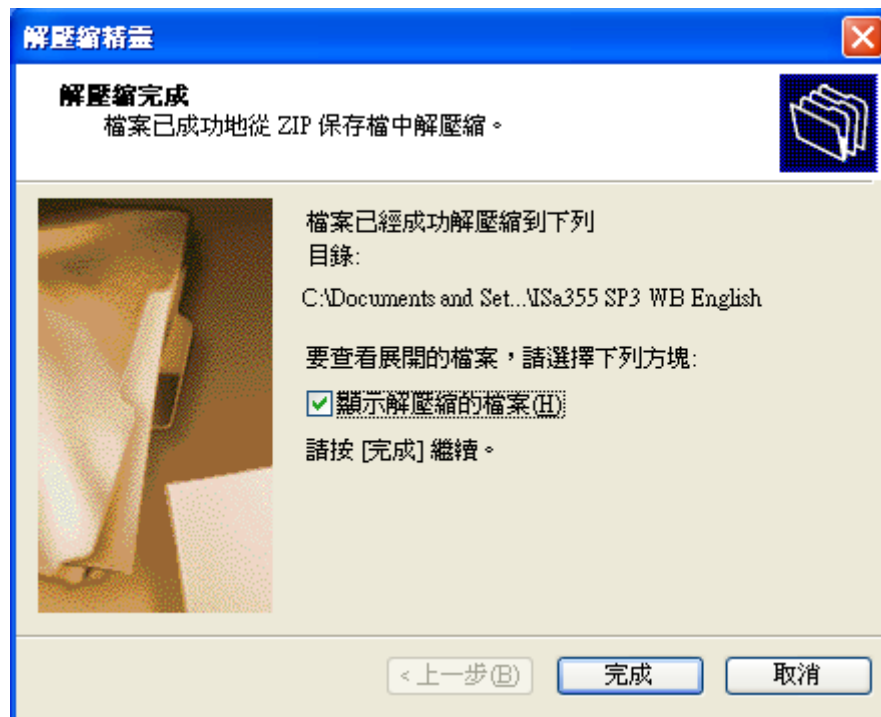
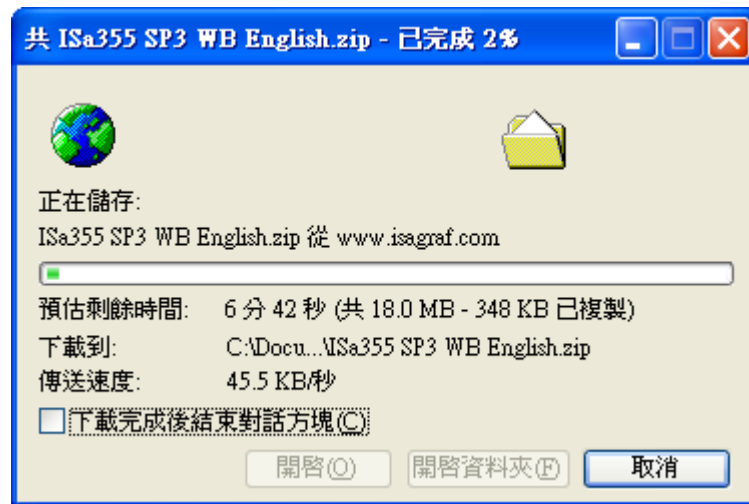
1.1 Download ISaGRAF 3.55 Demo Version

Please download the ISaGRAF 3.55 demo version at the ISaGRAF official website www.isagraf.com > [support] > [download center], click the pull down box [Download ISaGRAF 3], select [ISaGRAF 3.55 English] to download the ISaGRAF software and unzip the file.

Note: Recommend to download the English version, because this example uses English version.

The screenshot shows the ISaGRAF website in Internet Explorer. The browser title is "ICS Triplex ISaGRAF Inc. - leading IEC 61131 and IEC 61499 software - Windows Internet Explorer". The address bar shows "http://www.isagraf.com/index.htm". The website navigation menu includes "corporate", "products", "documentation", "support", "news center", "contact", "search", and "home". Below the navigation menu, there are links for "training center", "technical support contacts", and "download center". The "download center" section contains a dropdown menu for "Please select a version for download" with options for ISaGRAF 6.0.1.1 and ISaGRAF 5.22. Below this, there is a section for "Download ISaGRAF 3" with another dropdown menu for "Please select a version for download" showing options for "ISaGRAF 3.55 Full" and "ISaGRAF 3.55 English". The "ISaGRAF 3.55 English" option is highlighted. At the bottom of the page, there are contact numbers for Americas, France, Germany, and China.

Classification	ISaGRAF FAQ					No.	139-e
Author	Eva Li	Version	1.0.0	Date	May, 2011	Page	3/10

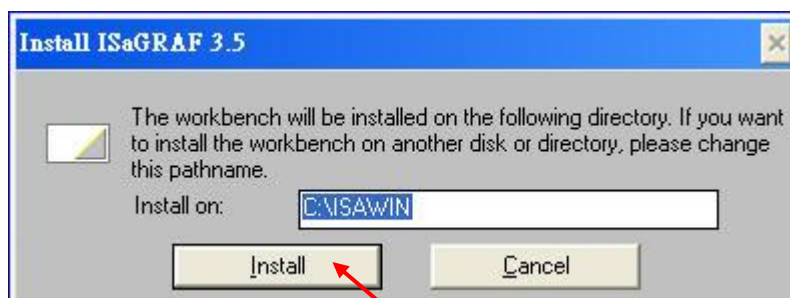
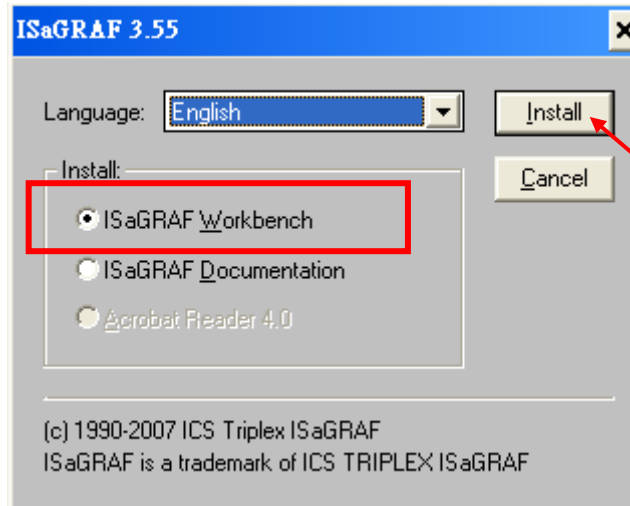
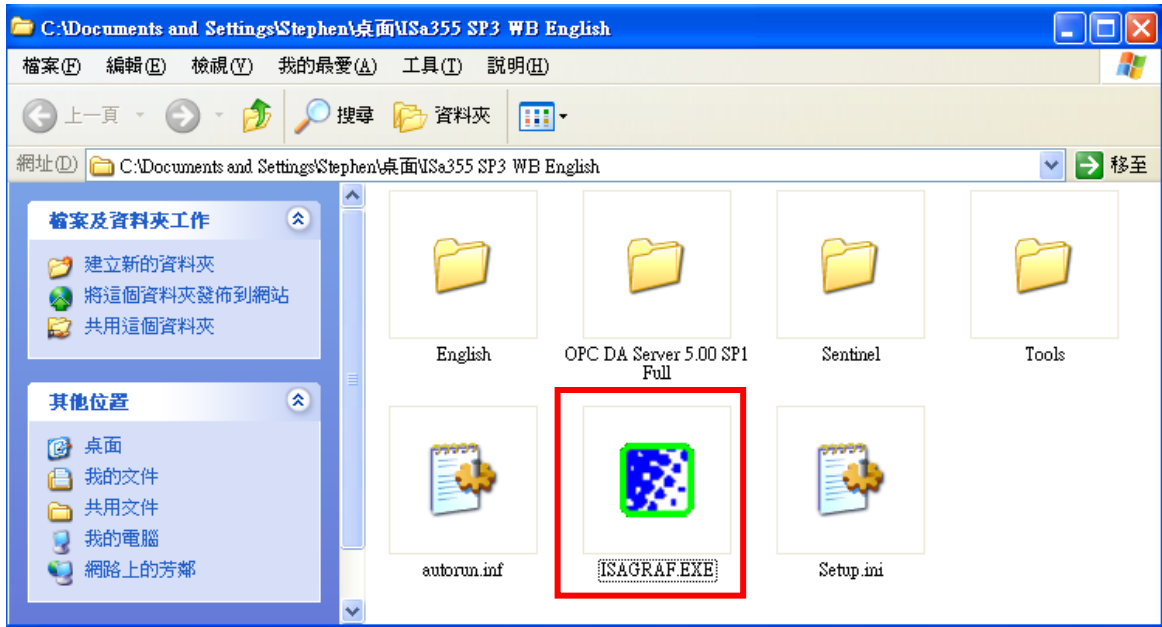


Classification	ISaGRAF FAQ					No.	139-e
Author	Eva Li	Version	1.0.0	Date	May, 2011	Page	4/10

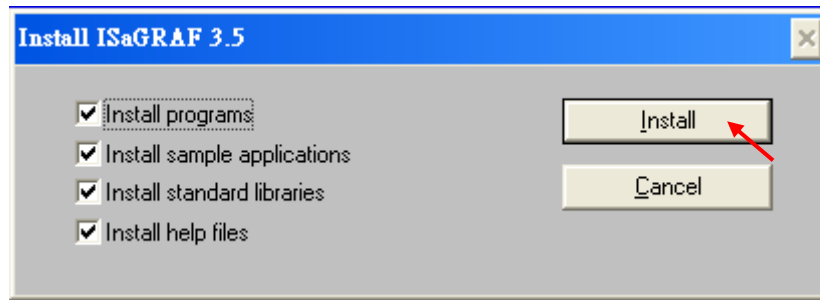
1.2 Install ISaGRAF 3.55 Workbench Demo Version

This example uses the ISaGRAF 3.55 English Demo Version.

Please double click the file "ISAGRAF.EXE" in the unzipped folder to install ISaGRAF.



Classification	ISaGRAF FAQ					No.	139-e
Author	Eva Li	Version	1.0.0	Date	May, 2011	Page	5/10



The ISaGRAF software is in the Start menu after the installation:
[Start] > [Programs] > [ISaGRAF 3.5] > [Projects].

The Demo Version will expire in 30 days.



Classification	ISaGRAF FAQ					No.	139-e
Author	Eva Li	Version	1.0.0	Date	May, 2011	Page	6/10

2. Download/Install ICP DAS Utility for ISaGRAF

The "ICP DAS Utilities for ISaGRAF" consists of the following major items.

- I/O libraries (for all ICP DAS ISaGRAF PAC)
- Modem_Link utility
- Auto-scan I/O utility
- ICP DAS Udloader

Note:

The ISaGRAF Workbench software must be installed before attempting to install the "ICP DAS Utilities for ISaGRAF". (Please refer to the previous section for the ISaGRAF Software installation.)

Please visit the website <http://www.icpdas.com/products/PAC/i-8000/isagraf.htm> (or <http://www.icpdas.com> > [Software] > [ISaGRAF]) and then click the icon "Driver" to download " io_lib.zip " to the root directory "C:\". Execute "setup.exe" after unzip, and then follow the wizard to install the utilities.

ISaGRAF series Driver & Library

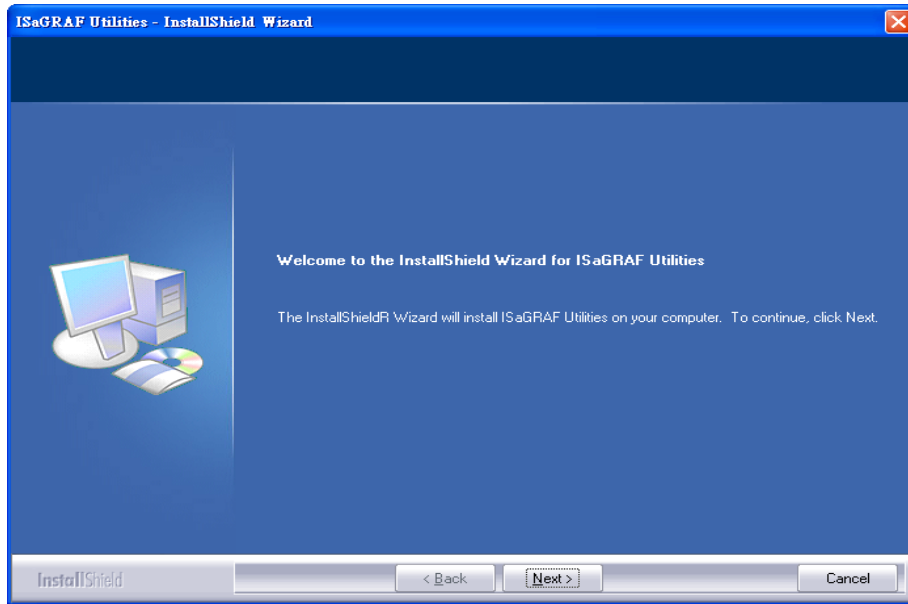
Features removed:
W-8347/8747, uPAC-7186EG, I-8x37-80, I-8xx7 and I-7188EG/XG with S256/512 and X607/608 no longer support previous retain variable, will continue to support the new retain functions. For more detail information about the new retain function, please refer to ISaGRAF FAQ074 and FAQ088: www.icpdas.com > FAQ > Software > ISaGRAF > 074 and 088

功能變更:
W-8347/8747, uPAC-7186EG, I-8x37-80, I-8xx7 和 I-7188EG/XG 使用 S256/512 和 X607/608 時，不再支持舊的可保存變數方式 (Retain variable)，但繼續支持新的可保存變數方式。請參考 ISaGRAF FAQ074 和 FAQ088: www.icpdas.com > FAQ > Software > ISaGRAF > 中文 > 074 和 088

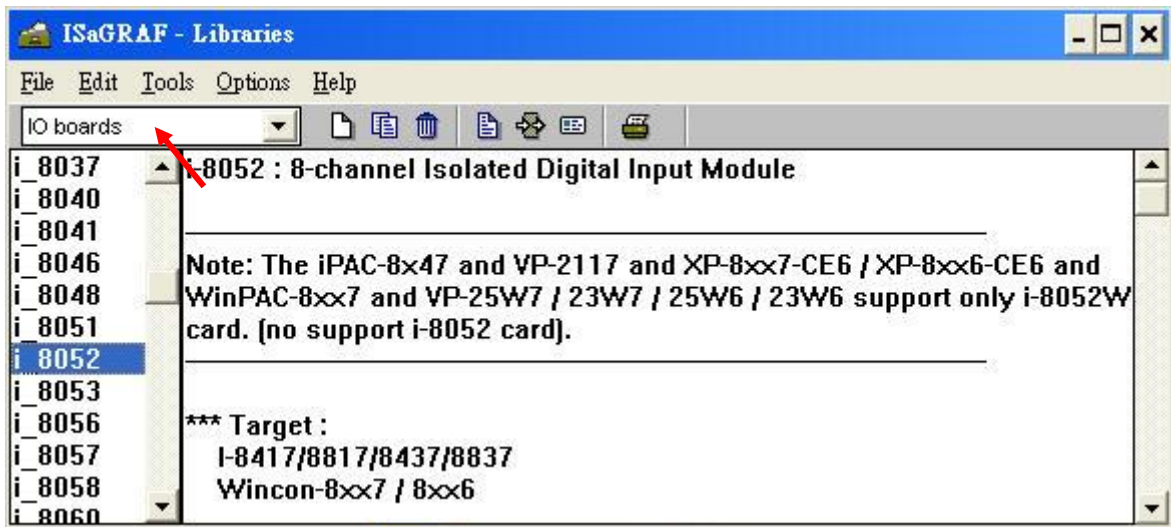
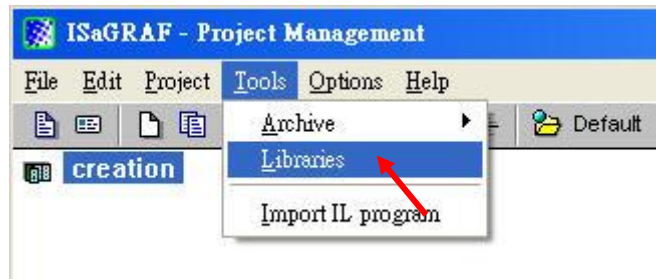
Products	Item	Version	Download	Size	Update	Remarks
XP-8xx7-CE6/XP-8xx6-CE6 driver	General driver	1.14	xp-8xx7-ce6-1.14.zip	3.77 MB	Feb-24-2011	NEW
WinPAC-8x47/8x46/8x37/8x36	General driver	1.34	wp-8x47-1.34.zip	1.38 MB	Feb-24-2011	NEW
VP-2xw7/2xw6	General driver	1.26	vp-2xw7-1.26.zip	1.38 MB	Feb-25-2011	NEW
W-8x37/8x36	General driver	4.22	w8x37_4.22.zip	726 KB	Nov-05-2010	
W-8x47/8x46	General driver	4.22	wincon8x47_4.22.zip	728 KB	Nov-05-2010	
IP-8447 / 8847 (80MHz)	General driver	1.09	latest_ip8x47.zip	346 KB	Mar-15-2011	
I-8xx7 (40 MHz CPU)	I-8417/8817 driver	4.14	latest_i8x17.zip	851 KB	Mar-04-2011	
	I-8437/8837 driver	4.14	latest_i8x37.zip	884 KB	Mar-04-2011	
	Motion driver	4.14	latest_8k_motion.zip	560 KB	Mar-04-2011	
	E-mail driver	2.42	email_2.42.zip	279 KB	Jun-14-2006	
I-8xx7-80 (80 MHz CPU)	General driver	4.14	latest_8k8.zip	885 KB	Mar-04-2011	
	Motion driver	4.14	latest_8k8_motion.zip	561 KB	Mar-04-2011	
uPAC-7186EG (80 MHz CPU)	General driver	1.13	latest_86g.zip	292 KB	Mar-04-2011	
I-7188EG	General driver	3.14	latest_eg.zip	267 KB	Mar-04-2011	
I-7188XG	General driver	3.13	latest_xg.zip	229 KB	Mar-04-2011	
VP-2117/VP-2117-TC	General driver	1.01	latest_vp2k.zip	550 KB	Apr-27-2010	
ICP DAS Utilities For ISaGRAF	io_library	1.19	io_lib.zip	5.15 MB	Mar-04-2011	

Note: The I-8437/I-8837 has phased out on May 1, 2008. Please select the compatible I-8437-80 /I-8837-80.
註: I-8437/I-8837 已於2008年5月1日起停止生產。請改選用相容產品 I-8437-80 /I-8837-80.

Classification	ISaGRAF FAQ					No.	139-e
Author	Eva Li	Version	1.0.0	Date	May, 2011	Page	7/10



After the installation, I/O libraries will show in [Tools] > [Libraries] of the ISaGRAF.

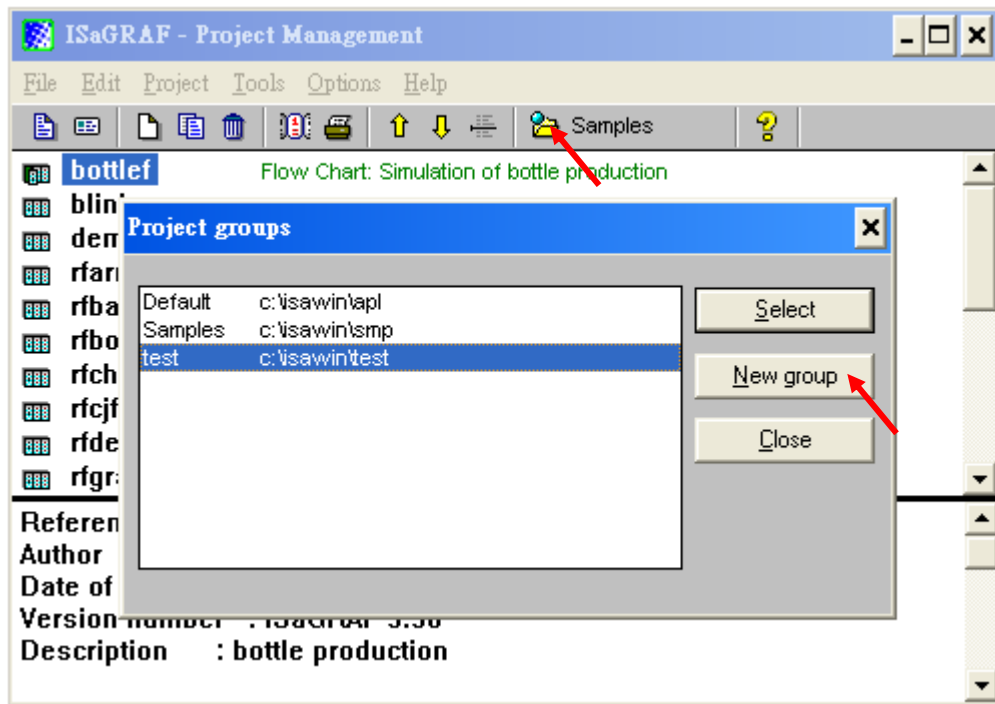


Classification	ISaGRAF FAQ					No.	139-e
Author	Eva Li	Version	1.0.0	Date	May, 2011	Page	8/10

3. Design the Projects

The ISaGRAF 3.55 Demo Version supports to design the application projects for all series of ICP DAS ISaGRAF PACs, the designed projects can be compiled, made, debugged and downloaded to the PAC to run and test.

Please create a new project group to save the project you design (Ex: "test", as the picture below).



Please refer to the section 2.1 "Writing A Simple ISaGRAF Program" of the manual "ISaGRAF Quick Start" or the section "Writing A Simple ISaGRAF Program" in the getting start manual for every model of ISaGRAF PAC to design your own project.

ISaGRAF PAC user manual website:

http://www.icpdas.com/products/PAC/i-8000/getting_started_manual.htm

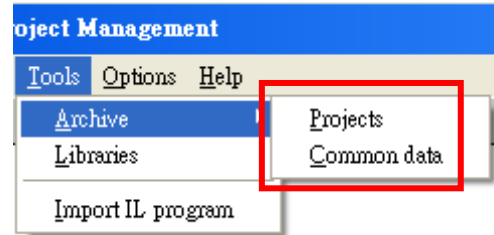
Classification	ISaGRAF FAQ					No.	139-e
Author	Eva Li	Version	1.0.0	Date	May, 2011	Page	9/10

4. The Limitations of the Demo Version

There are following limitations for the demo version:

1. [Tools] > [Archive] features are unavailable

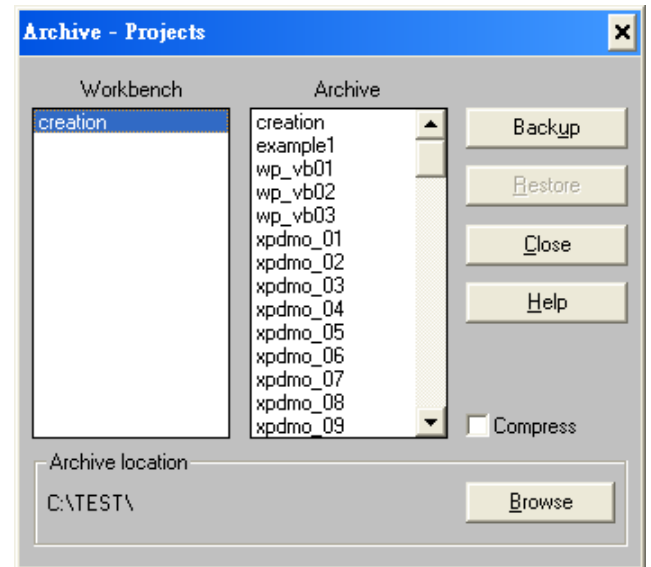
Include the restore and backup features in the feature "Projects" of "Archive" menu (as the picture on the right).



The warning dialog as below will show up when the feature is unavailable in the demo version.

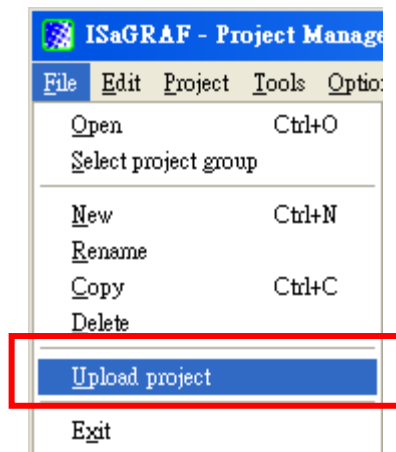


The archive function window is as the picture on the right. If you have any problem need to backup your program to ask for our service, please refer to in the next section.



2. Uploading Project from the PAC is unavailable

User can download the project to the PAC to test the features, but it is unavailable to upload the project running in the PAC to the ISaGRAF on the computer when using the demo version.

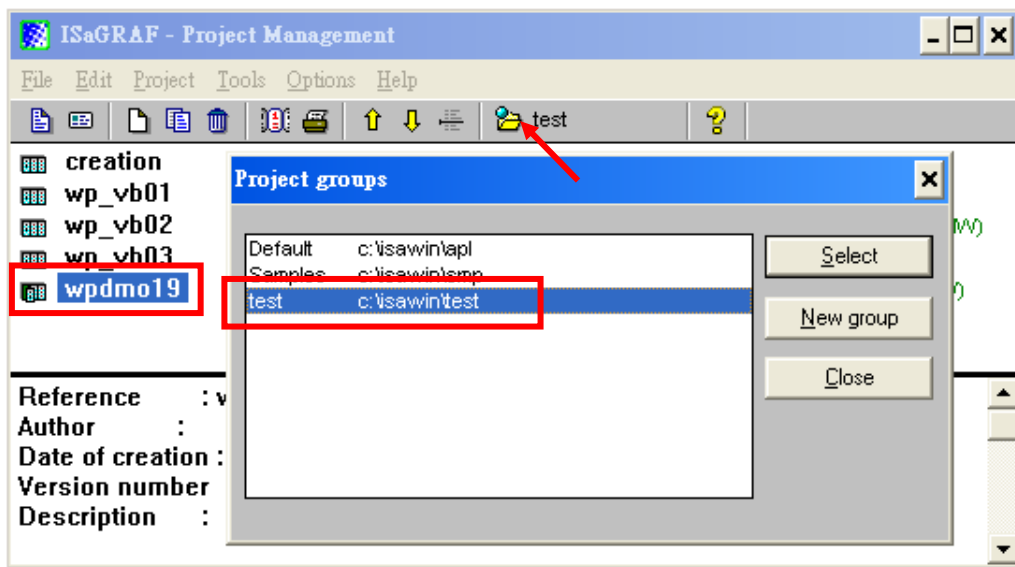


Classification	ISaGRAF FAQ					No.	139-e
Author	Eva Li	Version	1.0.0	Date	May, 2011	Page	10/10

5. How to Backup the Project for Services

If you have any problem when test the demo version and need to backup the project to ask for our service, please follow the steps below to backup project and email the problem and project to our service email address service@icpdas.com .

1. For example, the project name is "wpdmo19". Please select the tool icon "project group" to find the directory of the project, for example, " C:\isawin\test".



2. Execute "Windows Explorer", switch to the directory "C:\isawin\test" and copy whole folder of "wpdmo19" and mail it to our service email address.

