

How To Solve The USB-Freeze Problem Of The W-8x4x ? How To Update The W-8x4x 's OS Image ?

If the controller is Wincon-8347 / 8747 (Wincon with 2 ethernet ports), to solve the USB-freeze problem, the OS image of the W-8x47 must use the version released on Mar.16,2010 (or later version) .

Please check if your W-8x4x 's OS image is correct or not . Then run Start > Programs > Wincon Utility > System Config > OS Version on the W-8x47 's VGA monitor to check it. For example, if it displays “CE.Net 4.1 4.10.03.16.EN.CAB.V200” , it means the OS version is released on Mar.16,2010. English version. This is correct, you don't have to update it anymore.

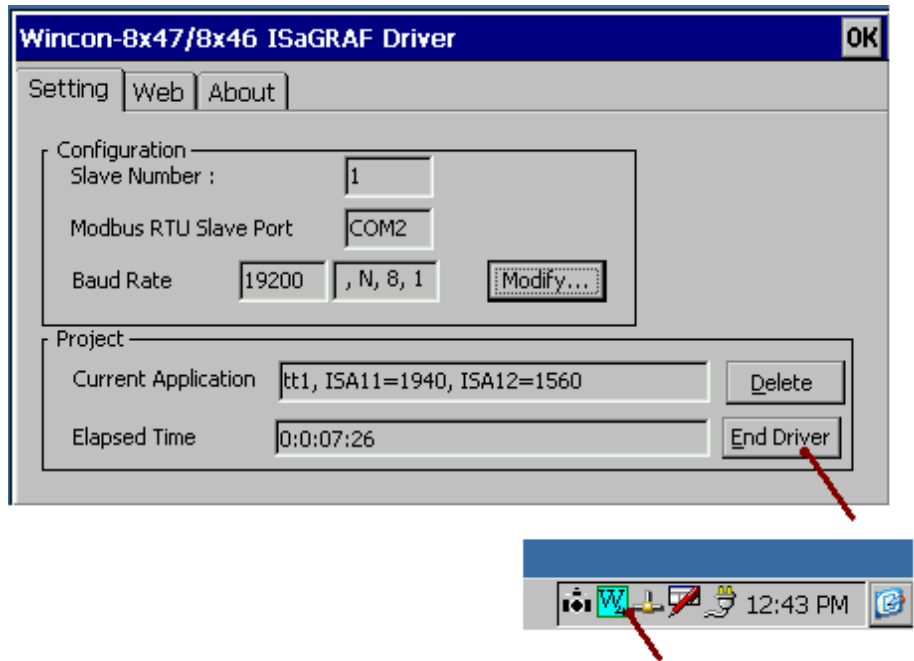
However, if your current OS is not correct, please download the correct version at ftp://ftp.icpdas.com/pub/beta_version/WinCon_OS_Image/

English OS:	nk_8x4x_20100316_EN_CAB_V200.bin
Traditional Chinese OS:	nk_8x4x_20100316_TC_CAB_V200.bin
Simplified Chinese OS:	nk_8x4x_20100316_SC_CAB_V200.bin

Important Note: When using the above OS image, DO NOT copy file with large size (> 20 Kbytes) between the USB drive and any directory in the Wincon-8x4x. This copy operation in the USB pen drive may make the USB freeze.

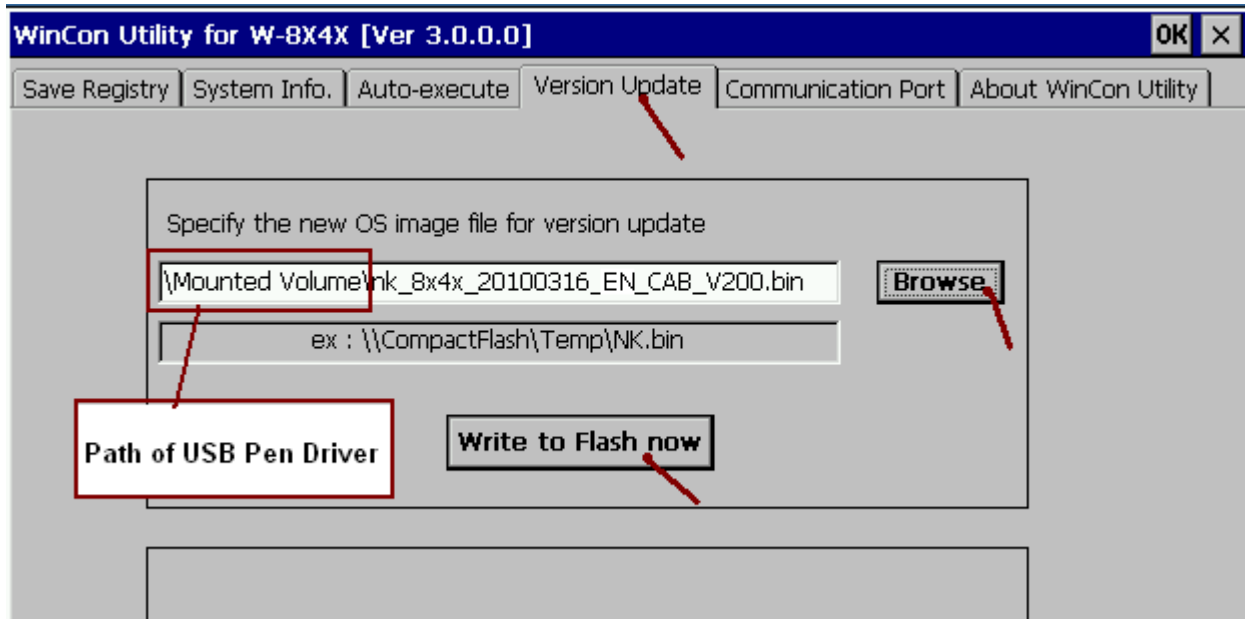
Procedure to update the W-8x47 's OS :

1. Please stop the ISaGRAF driver first by double click the “W4” icon on the bottom-right of the W-8x47's VGA monitor. Then click the “End Driver” to stop it.



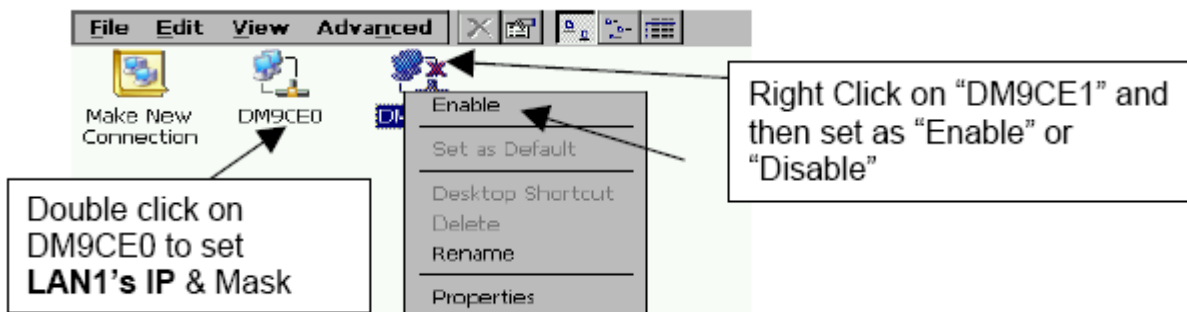
2. To update the OS image, copy the correct OS image file to the root directory of one USB pen drive. Then run Start > Programs > Wincon Utility > Version Update > Browse on Wincon-8x4x to select the correct OS image file in the root directory of the USB pen drive. Then click “Write to Flash now” to update it. It will take about 5 ~ 10 minutes to update it. Then when it is finished, please acknowledge the dialog window. Then it will reboot itself.

Important Note: When using the above OS image, DO NOT copy file with large size (> 20 Kbytes) between the USB drive and any directory in the Wincon-8x4x. This copy operation in the USB pen drive may make the USB freeze.

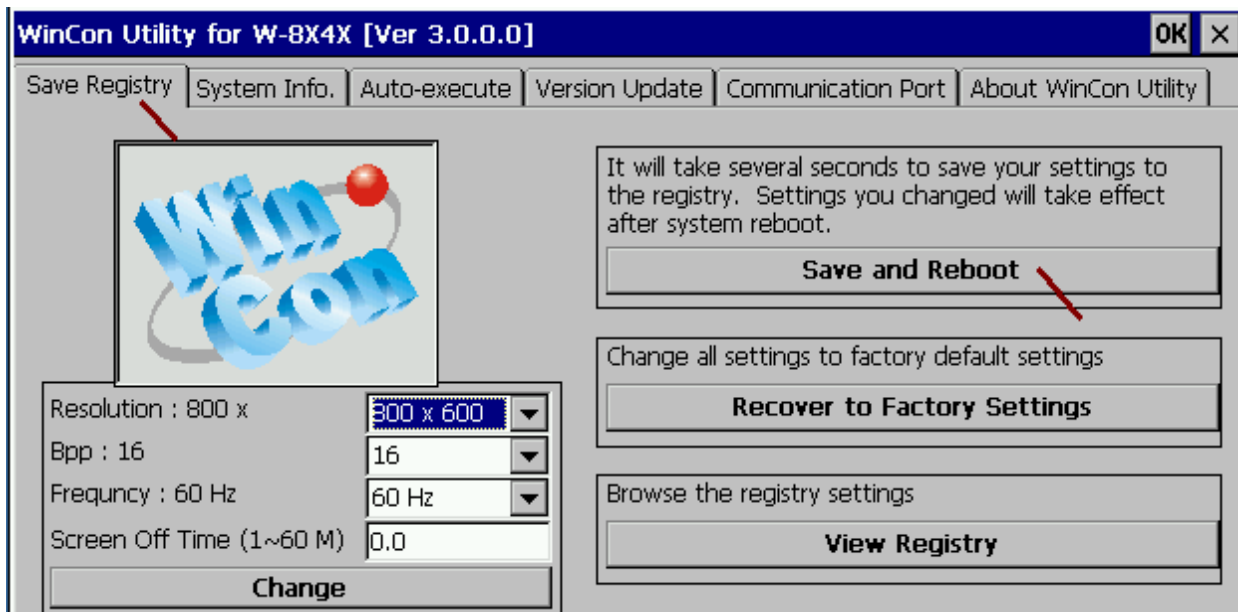
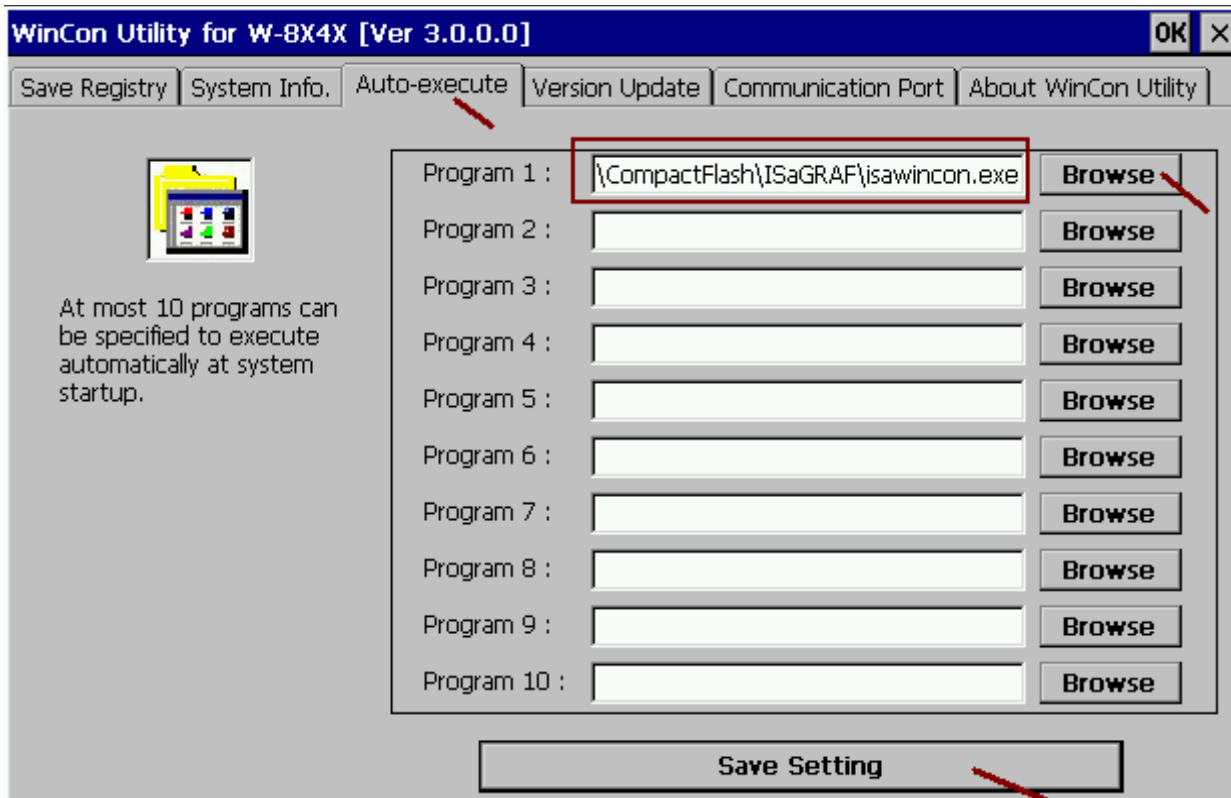


3. After the new updated OS is burn successfully, the W-8x47 will reboot itself once. Plug out the USB pen drive, then set a fixed IP for LAN1 and LAN2 ethernet ports. Please run Start > Settings > Network and Dial-up Connections. Then click “DM9CE0” and “DM9CE1” to set 2 fixed IP to LAN1 and LAN2, set “Subnet Mask” as 255.255.255.0 .

Note: The ftp function of the W-8x4x controller only works when only one LAN port is enabled (the other one should be disabled) .



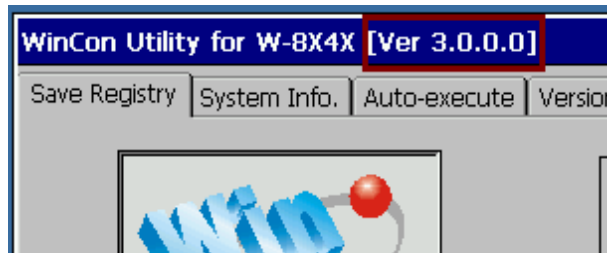
4. Then after, you need to set ISaGRAF driver to auto-exec. Please run Start > Programs > Wincon Utility > Auto-execute > click Program 1 “Browse” to set it as “\CompactFlash\ISaGRAF\isawincon.exe”, then remember to click the “Save Setting” on the bottom. Then goto “Save Registry”, click “Save and Reboot”. The W-8x47 will save the above IP and auto-exec settings and re-boot once.



5. Recommend to to update the W-8x4x 's Wincon Utility to the version 3.0.0.0 (or later version) if yours is older than the version 3.0.0.0.

Visit <ftp://ftp.icpdas.com/pub/cd/w-8x4x/compactflash/icpdas/tools/> to download the “wincon utility 1.exe” to your PC first. Then using ftp to transmit it from your PC to W-8x4x 's “\Temp”. Then copy it to W-8x4x 's “\CompactFlash\ICPDAS\Tools\” directory.

Note: The ftp function of the W-8x4x controller only works when only one LAN port is enabled (the other one should be disabled) .



6. To copy file with large size to the W-8x4x 's “\CompactFlah\...” directory, please must use ftp to transmit it (DO NOT use USB pen drive). The ftp directory should be changed to the “\CompactFlash” and run “Save and Reboot” once to make the ftp works.

Note: The ftp function of the W-8x4x controller only works when only one LAN port is enabled (the other one should be disabled) .

