
How to install or remove the ISaGRAF development platform properly

By grady_dun@icpdas.com

For the ICP DAS ISaGRAF PACs and the ISaGRAF Workbench software to operate properly, it is imperative that each is setup correctly. This paper covers the details of how to setup the controller system and the ISaGRAF Workbench software in a minimum of time.

Hardware Requirements

- A Personal Computer With At Least A Pentium, 133 MHz Or Faster Processor
- 32 Mbytes Memory (Preferably 64 Mbytes RAM)
- A Hard Drive With At Least 128 Mbytes Of Storage Space (Preferably Larger)
- At Least One RS-232 Serial Port

Software Requirements

One of the following computer operating systems must be installed on the target computer before you can install the ISaGRAF Workbench software program.

- Windows 95
- Windows 98
- Windows NT Version 3.51 or Windows NT Version 4.0
- Windows 2000 Or Windows XP
- Windows Vista

The main steps as follows

- I. Set up the ISaGRAF develop platform
 1. Install the ISaGRAF Workbench program
 2. Install the ICP DAS Utilities For ISaGRAF program
- II. Remove the ISaGRAF develop platform

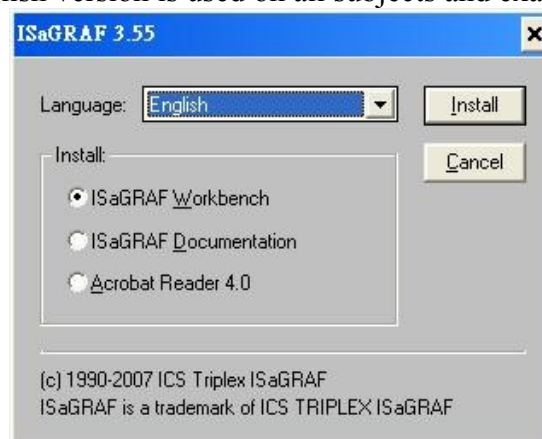
I. Set up the ISaGRAF develop platform

1. Install the ISaGRAF Workbench program

Insert the ISaGRAF Workbench CD into your CD-ROM drive. Normally the auto-start program will activate the "install.bat" file automatically.

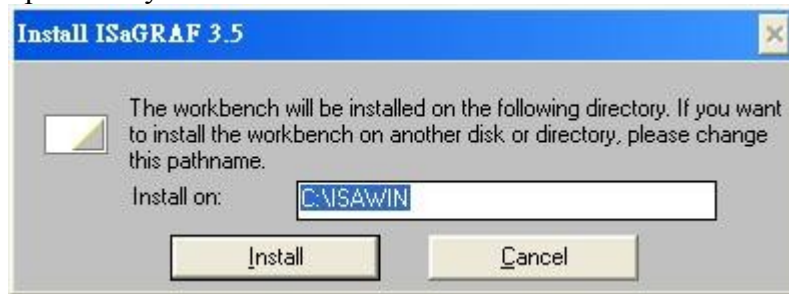
If your computer does not have the auto-start feature active, use the Windows Explorer and go to the CD-ROM drive where the Workbench CD is installed, then double-click on the "install.bat" file listed on the ISaGRAF CD. If the "install.bat" file is not found on your ISaGRAF CD, then double-click on the "ISaGRAF.exe" file to start the installation process. Once you have started the "install.bat" file, a dialog box will appear as shown as the Figure 1. Select the language version of the ISaGRAF software program you would like to use. The English version is used on all subjects and examples throughout this manual.

Figure1 :

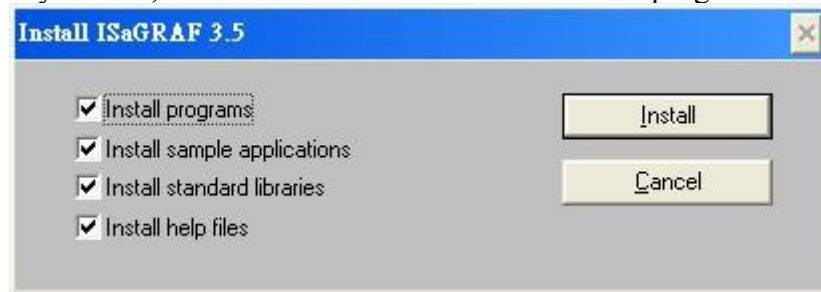


Once you have selected to install the ISaGRAF Workbench program and selected the desired language, just press the "Install" button, and follow the step-by-step directions of each dialog box as they appear to complete the installation process. The first dialog box to appear allows the user to define what drive and subdirectory the ISaGRAF program will install into.

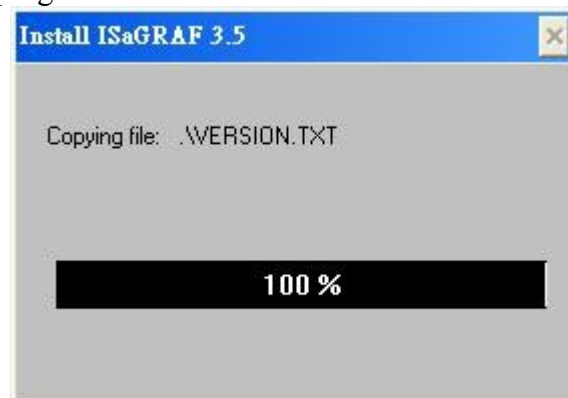
- Type the path that you want install ISaGRAF workbench into.



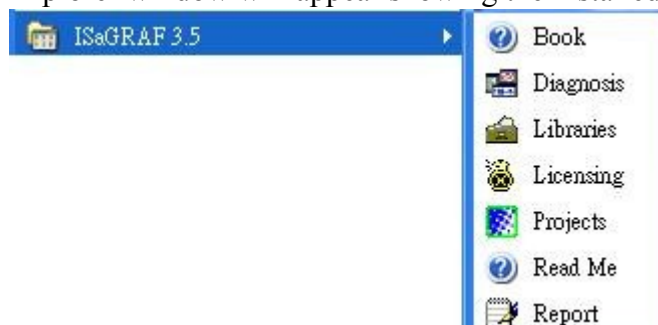
- The next dialog box asks the user how much of the ISaGRAF program to you wish to install. By default, it is best to allow all of the ISaGRAF programs to install.



- Once you have selected which programs and applications are to be installed, the installation process begins, and an installation progress dialog box will appear showing the installation progress.



- Once the ISaGRAF Workbench software installation process has been completed, a Windows Explorer window will appear showing the installed programs.



If your ISaGRAF Key-Pro is USB type, please follow below steps to install the proper USB driver.

1. To make your PC recognize the ISaGRAF USB protection-key, please **un-plug** the USB protection-key from your USB port first, then run “\Sentinel\SSD5411-32bit.exe“ in the ISaGRAF 3.55 CD-ROM after you have installed the ISaGRAF. Then please reset your PC.
- 2.To run ISaGRAF Ver. 3.5x, please always plug the USB protection-key in the PC’s USB port.**

NOTE: You must install the hardware protection device (dongle) provided with the ISaGRAF software on your computers parallel port to for the ISaGRAF program to achieve fully authorized functionality.(except the ISaGRAF-32, it doesn’t require the dongle)

While using ISaGRAF and the dongle is plugged well, if the “Help” – “About” says “Maximum number of IO variables: 32”, it means ISaGRAF workbench cannot find the dongle well. Please reset your PC and then check the “Help” – “About” again. If it still displays “Maximum number of IO variables: 32”, the dongle driver may not be installed well. Please execute the ISaGRAF CD_ROM

 \Sentinel5382\setup.exe for ISaGRAF-80

 or \Sentinel\setup.exe for other ISaGRAF version (except ISaGRAF-32)

 or follow the former section if your protection-key is USB type.

and then reset the PC again.

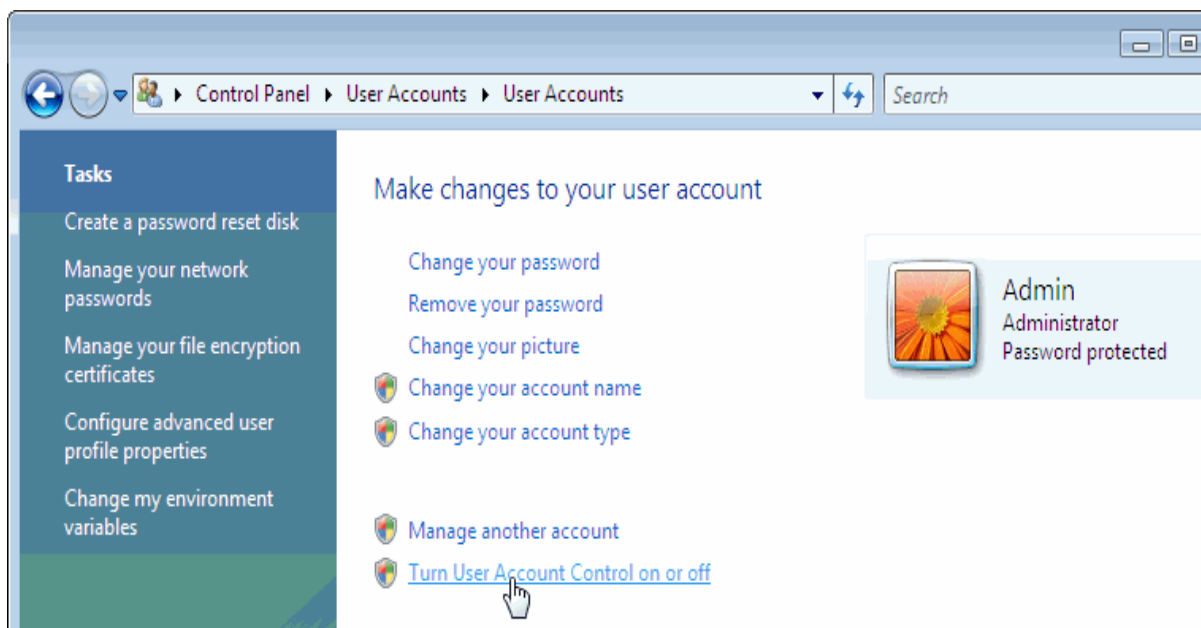
Important Notice For Window Vista Users

Because of windwos Vista's User Account Control, will lead to ISaGRAF 3.x implementation of the exception. So **DISABLE** the User Account Control before installing the ISaGRAF Workbench.

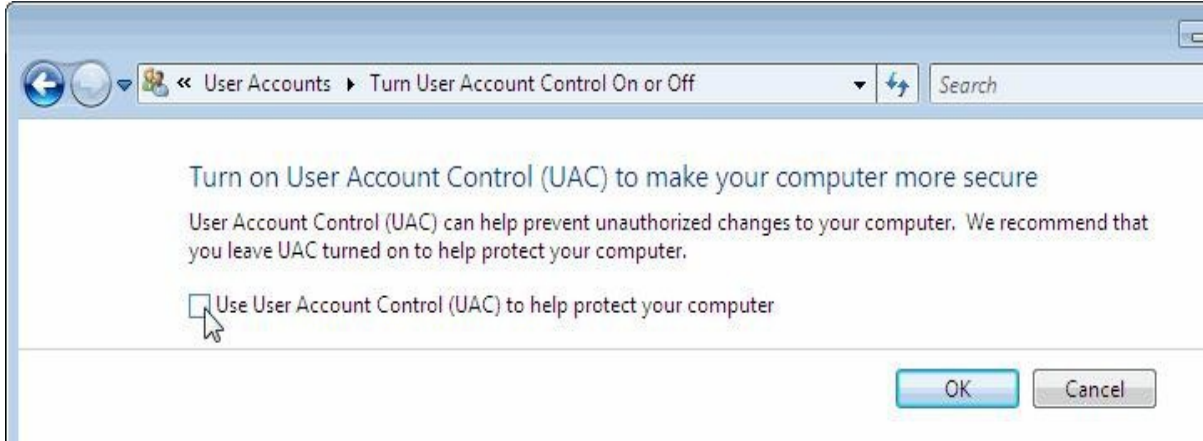
How to disable the User Account Control

NOTE: the following operation **Only** the administrator can do that

1. From the “**Start**” menu, choose “**Control Panel**”, then “**User Accounts**”, then “**User Accounts**”, then click “**Turn User Account Control on or off**”.



2. Click “**Continue**” on the pop-up “**UAC**” dialog.
3. Don't check the “**Use User Account Control(UAC) to help you protect your computer**” option, then click the “**OK**” button



4. Restart your computer once.
5. Install the ISaGRAF Workbench with above the method.

Important Notice For Window NT Users

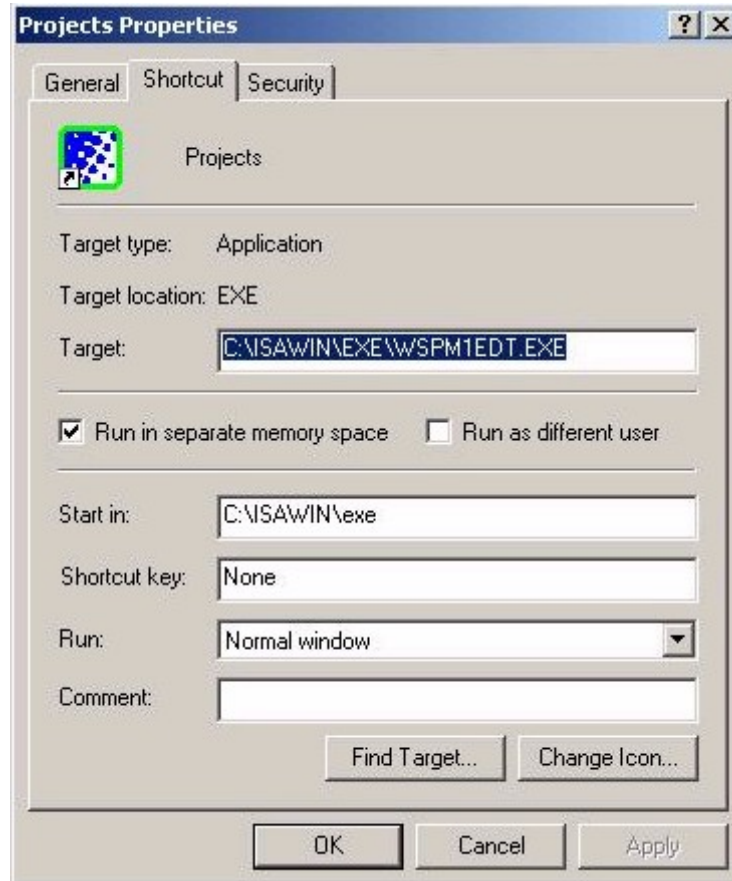
If your computer is using the Windows NT operating system, you will need to add one line to the "isa.ini" file in the ISaGRAF Workbench "EXE" subdirectory. The default path of installing ISaGRAF program is C:\isawin\exe\isa.ini.

You can use any ASCII based text editor (such as Notepad or UltraEdit32) to open the "isa.ini" file. Locate the [WS001] header in the "isa.ini" initialization file (it should be at the top of the file). Anywhere within the [WS001] header portion of the "isa.ini" initialization file, add the entry shown below within the [WS001] header:

```
[WS001]
NT=1
Isa=C:\ISAWIN
```

The [WS001] header should now look like the above example. The **NT=1** entry addition is absolutely required for the RS-232 communications to operate properly in the Windows NT operating environment.

When closing the ISaGRAF window on windows 2000, it sometimes holds (No response). You may create a short cut for the “ISaGRAF project manager. And then check on "run in separate memory space" option in the shortcut property.



2. Install the ICP DAS Utilities For ISaGRAF program

The “ICP DAS Utilities For ISaGRAF” consists of 4 major items.

I/O library definition

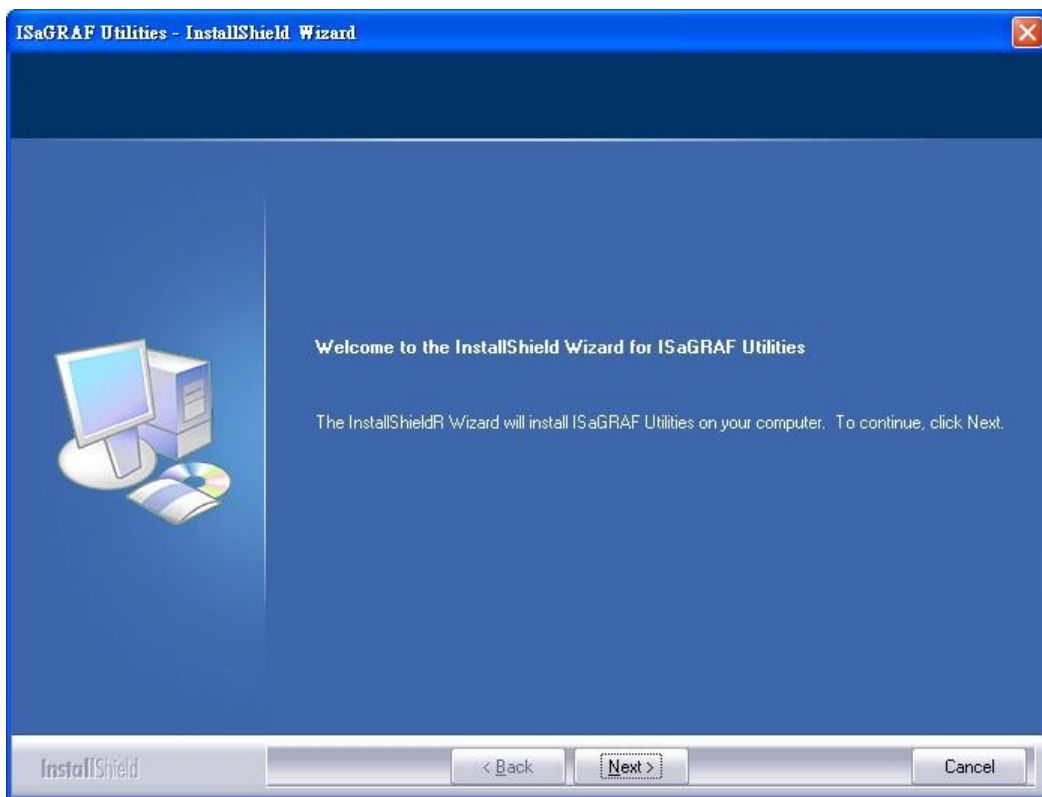
Modem_Link utility

Auto-scan I/O utility

ICPDAS Udloader

Please insert the CD-ROM into your CD-ROM drive. Then run “setup.exe” in the folder of CD-ROM: \napdos\isagraf\ . Follow Setup Wizard's guide to install it as the Figure 2.

Figure 2:



Note:

If “setup.exe” is not in your CD-ROM, please download “ICP DAS Utilities For ISaGRAF” from http://ftp.icpdas.com/pub/cd/wincon_isagraf/napdos/isagraf/io_lib.zip

If you change the path of installing the ISaGRAF Workbench, redirect the path of installing the ICP DAS Utilities For ISaGRAF to the path that contains the ISaGRAF Workbench.

II. Remove the ISaGRAF development platform

The main steps as follows

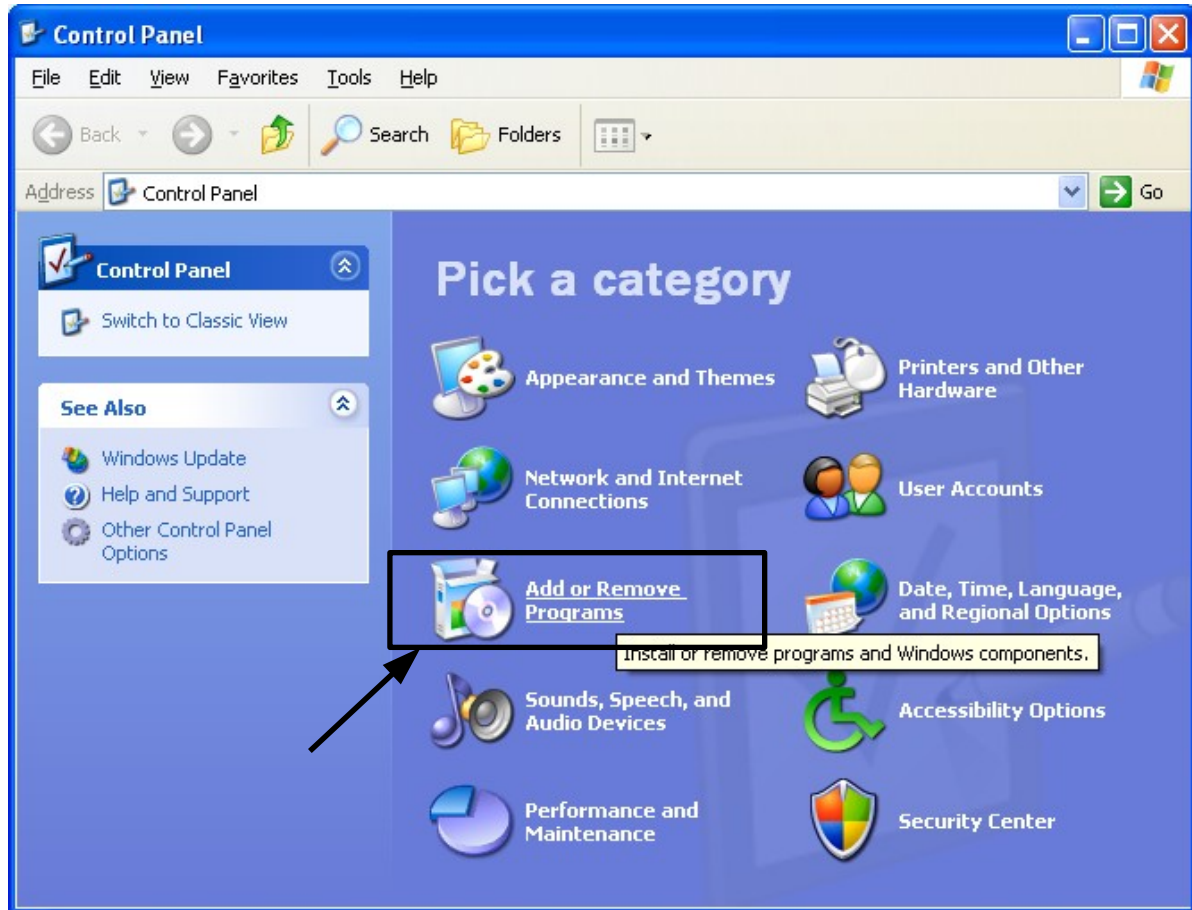
1. Remove the ICP DAS Utilities For ISaGRAF
2. Delete the folder that contains ISaGRAF Workbench

3. Remove the ICP DAS Utilities For ISaGRAF

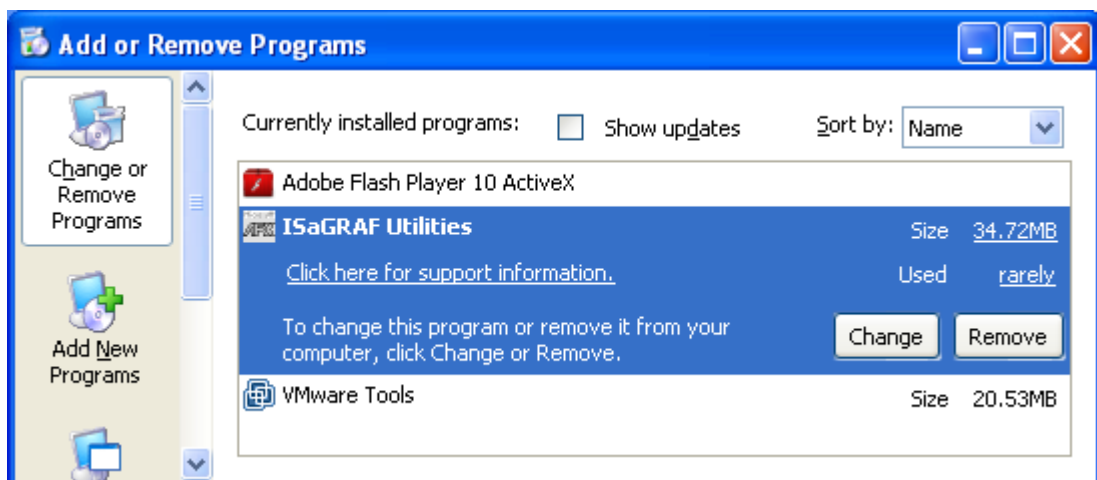
From the “Start” menu, select “Control Panel”



Click the “Add or Remove Program” icon



Select the program “ISaGRAF Utilities” to remove and click Remove



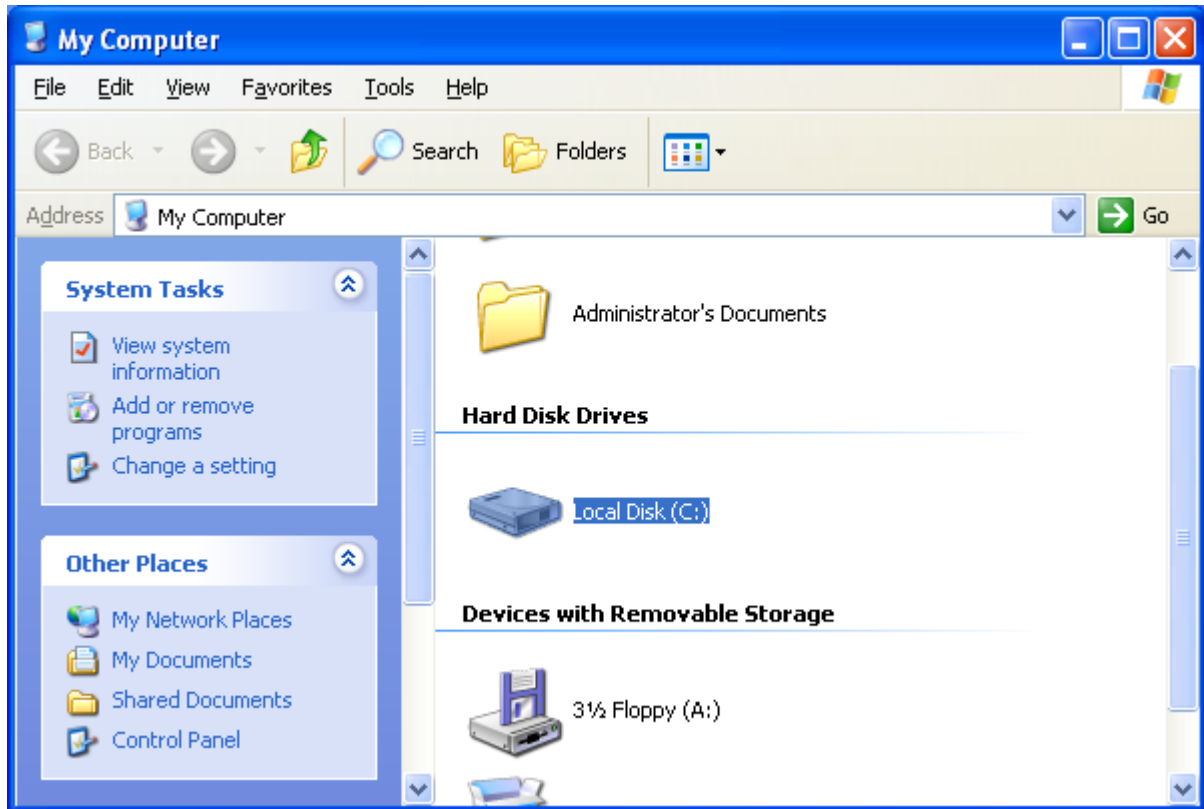
Follow the Remove Wizard's guide to uninstall it.

4. Delete the folder that contains the ISaGRAF Workbench

Important note:

Please backup your project files if you want to keep them before remove the ISaGRAF Workbench.

Click “My computer” on the desktop and click “Local Disk (C:)”



Delete the folder “ISAWIN” (the default path of installing ISaGRAF Workbench is C:\ISAWIN\)

