

Why PC can not connect the WP-8xx7 or VP-25W7/23W7 's FTP server ?

By chun@icpdas.com

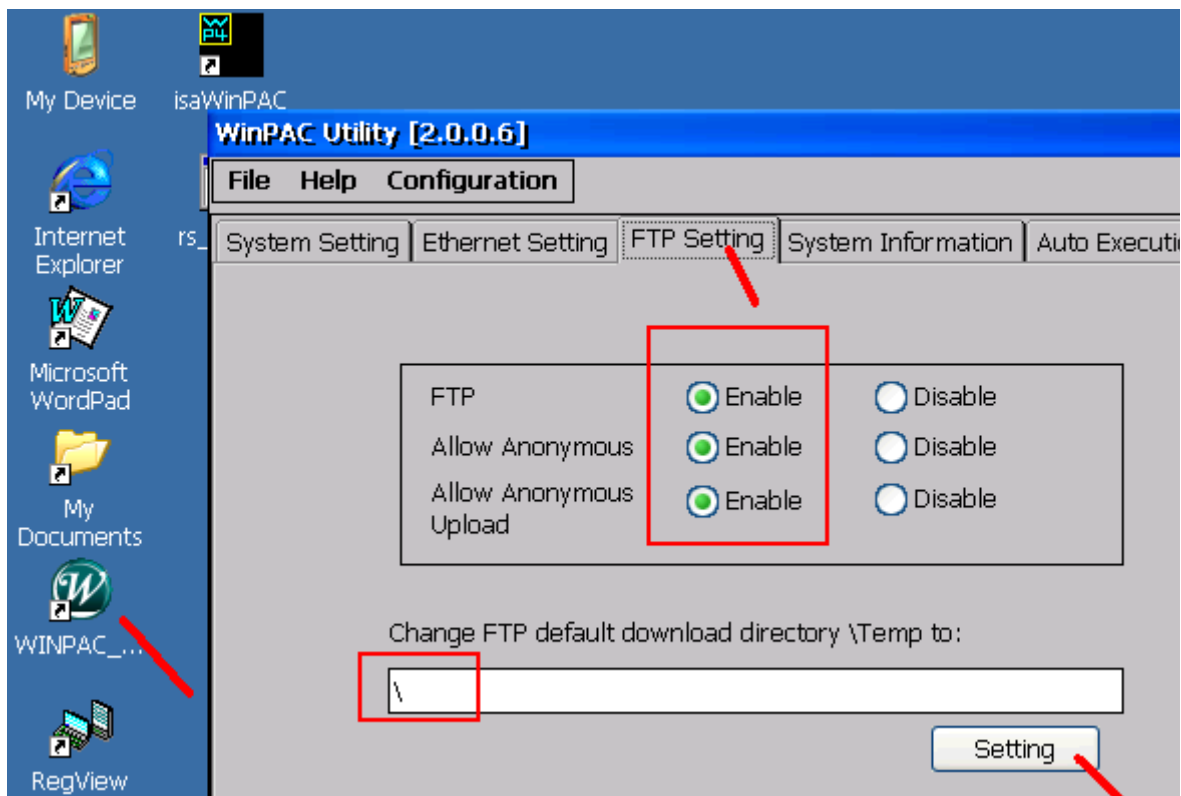
Please check below settings.

1. The PC 's IP and Mask address must set in the same domain as the WP-8xx7 (or VP-25W7/23W7) 's IP and Mask .

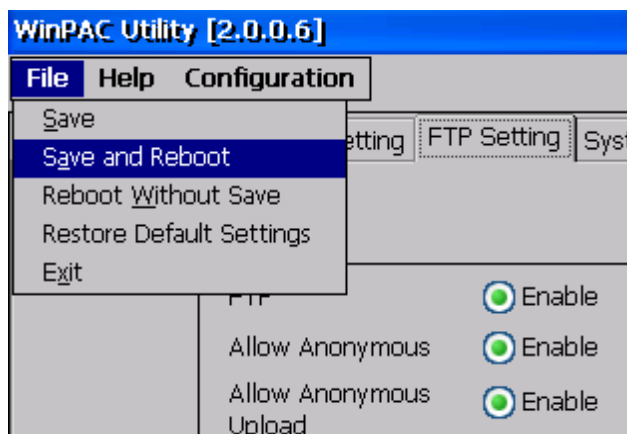
For example, PC (IP=192.168.1.180 , Mask=255.255.255.0) and WP-8xx7 (192.168.3.200 , 255.255.255.0) are impossible to connect each other.

However, PC (192.168.1.180 , 255.255.255.0) and WP-8xx7 (192.168.1.200 , 255.255.255.0) can connect each other well.

2. Check if the WinPAC utility (or ViewPAC Utility) 's FTP server settings are correct.



If they are not enabled, please check all of them to enable. Then set the proper FTP default directory and click on “Setting” to save them . After that, run “File” > “Save and Reboot” once to save the setting to registry, the WinPAC-8xx7 will reboot itself once automatically.



3. Check if the “WinPAC-8x47/8x46 (or VP-25W7/23W7) ISaGRAF driver” setting is correct.

To enable the FTP server, do not check the “Disable FTP Service” .

For safety, recommend to check both of “Disable FTP Service” and “Disable Telnet Service” to protect your WP-8xx7 after the program is well designed and tested. (This will disable FTP server and telnet server)

