
How to modify the PAC 's IP, NET-ID and Modbus RTU Slave port setting of the W-8347 / 8747 and WinPAC-8xx7 and XP-8xx7-CE6 by an USB pen drive (without Mouse and VGA) ?

The Wincon-8347 / 8747 since its driver version 4.04 (and WP-8147/8447/8847 since driver ver. 1.02 and XP-8xx7-CE6 since driver Ver. 1.06) supports modifying its IP, Mask, Gateway address and NET-ID and Modbus RTU Slave port setting by an USB pen drive. (**The W-8037/8337/8737 doesn't support this feature**)

New released driver can be download at www.icpdas.com > ISaGRAF SoftLogic PAC > Driver .

Note: Only the USB pen driver can be detected by the W-8x47 and WP-8xx7 and XP-8xx7-CE6 supports this feature.

To use this function, please edit a pure text file "Wsetting.txt" in advance in your PC by a text editor. For example, the "Notepad" editor in PC / Windows. Then copy this "Wsetting.txt" file to the root directory of an USB pen drive. Then user can use this USB pen drive to do the setting. The operation step is as following.

1. Please turn OFF the power of the PAC first. Then plug in this USB pen drive to an USB port on the PAC 's front panel.
2. Next, please power ON the PAC and wait about 40 to 120 seconds. (This waiting time depends on the USB pen drive. Some can be detected in 10 seconds after the W-8347 / 8747 (or WP-8xx7 or XP-8xx7-CE6) is booted well, while some is detected in 30 to 60 seconds later)
3. Next power OFF the PAC, plug out the USB pen drive, then power ON PAC again. Then the ISaGRAF driver will use the new setting.

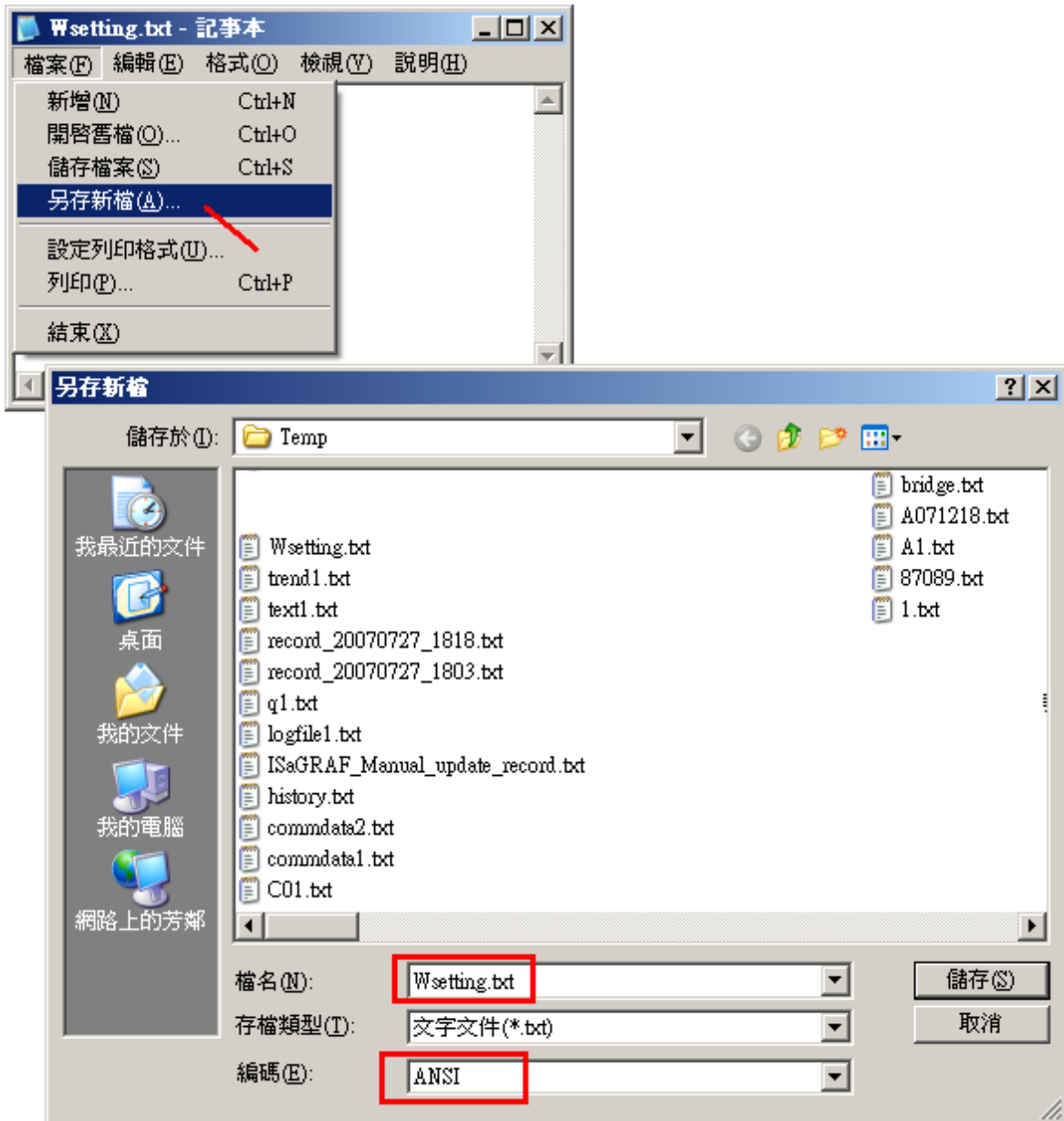
Format of the Wsetting.txt file:

User can download a correct "Wsetting.txt" file from www.icpdas.com > FAQ > Software > ISaGRAF > 097 .

There is 9 rows in the Wsetting.txt file, no less and no more. Data must be filled starting at the first position in each row. The ending character of each row should be the "next-line" characters , that is 0Dh and 0Ah (the ASCII code character - 0D and 0A). Useless character **can not** be filled in each row whatever at the beginning, middle or ending of the row, like the SPACE and TAB character.

- | | |
|---------------|--|
| 1 | The first row is the NET-ID, value can be 1 to 255 |
| 0 | The second row is the Modbus RTU Slave port No., can be 0(none), 2(COM2), 3(COM3) |
| 19200 | The communication baud rate, can be 600,1200,2400,4800,9600,19200,38400,57600,115200 |
| 192.168.1.101 | The 4th row is the IP address of LAN1 port, if fill in a single 0 means disable it |
| 255.255.255.0 | The 5th row is the Mask of LAN1 port |
| 0 | The 6th row is the Gateway address of LAN1 port, if fill in a single 0 means skip it |
| 192.168.1.102 | The 7th row is the IP address of LAN2 port, if fill in a single 0 means disable it |
| 255.255.255.0 | The 8th row is the Mask of LAN2 port |
| 192.168.1.1 | The 9th row is the Gateway address of LAN2 port, if fill in a single 0 means skip it |

When the file is done by the Notepad editor, please must use “Save as ...” to save it as the “ANSI” format (pure text format) as the figure listed in the following.



The next page lists three correct samples .

Three correct samples :

sample 1:

1
0
19200
192.168.1.10
255.255.255.0
192.168.1.1
0
255.255.255.0
192.168.1.1

The sample 1 sets the NET-ID as 1 and the Modbus RTU Slave as “none”
The (IP, Mask, Gateway) of LAN1 is as (192.168.1.10 , 255.255.255.0 , 192.168.1.1)
Disable LAN2

sample 2:

5
3
19200
0
255.255.255.0
0
192.168.1.11
255.255.255.0
0

The sample 2 sets the NET-ID as 5 and the Modbus RTU Slave as COM3 and its communication baud rate is 19200 bps (bit per second)
Disable LAN1
The (IP, Mask) of LAN2 is as (192.168.1.11 , 255.255.255.0) , skip gateway setting.

sample 3:

1
2
9600
10.0.0.98
255.255.255.0
0
10.0.0.99
255.255.255.0
0

The sample 3 sets the NET-ID as 1 and the Modbus RTU Slave as COM2 and its communication baud rate is 9600 bps (bit per second)
The (IP, Mask) of LAN1 is as (10.0.0.98 , 255.255.255.0) , skip gateway setting.
The (IP, Mask) of LAN2 is as (10.0.0.99 , 255.255.255.0) , skip gateway setting.

The next page lists four incorrect samples.

Four incorrect samples :

Incorrect sample 1

1
5
9
192.168.1.10
255.255.255.0
192.168.1.1
0
255.255.255.0
0

Incorrect sample 1:

The 2nd row error, value should be 0 or 2 or 3 .

The 3rd row error, value should be 600 , 1200 , 2400 , 4800 , 9600 , 19200 , 38400 , 57600 , 115200

Incorrect sample 2

1
2
19200
192.168.1.2345
255.255.255.0
192.168.1.1
0
255.255.255.0
192.168.1.1

Incorrect sample 2:

The 4th row error, LAN1 IP is incorrect .

The 7th row error, useless character appeared in this row, the SPACE character

Incorrect sample 3

1
2
19200
192.168.1.99
255.255.255.0
192.168.1.1
0

Incorrect sample 3 :

The "Wsetting.txt" must have 9 rows. This has only 7 rows.

Incorrect sample 4

1
2
19200
192.168.1.10
255.255.255.0
0
192.168.1.10
255.255.255.0
0

Incorrect sample 4:

The IP address in the 4th row can not be the same as the 7th row.