

How to measure +/-150VDC in ISaGRAF controllers plus the i-87017W-A5 I/O card ?

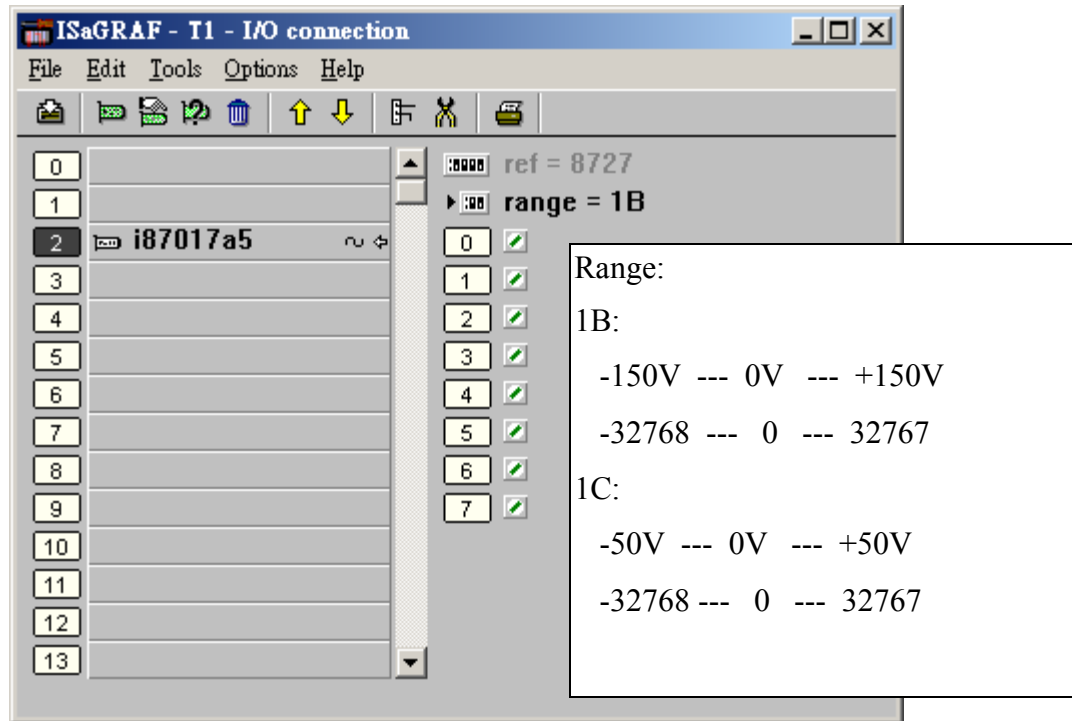
ISaGRAF controllers support the i-87017W-A5 I/O module to measure +/-150VDC or +/-50VDC since below driver version.

Wincon-8xx7 / 8xx6 :	3.41
i-8417 / 8817 / 8437 / 8837 :	3.23
i-8437-80 / 8837-80 :	3.23
i-7188EG :	2.21
i-7188XG :	2.19

Please download the new released driver and the “ICP DAS Utilities For ISaGRAF” at <http://www.icpdas.com/products/PAC/i-8000/isagraf-link.htm> if yours is old.

Please visit http://www.icpdas.com/products/Remote_IO/i-87k/i-87017w-a5.htm for More information about the i-87017W-A5.

To use the i-87017W-A5 in the Wincon-8xx7 's slot 1 through 7 or in the i-8xx7 's slot 0 through 7. Please connect “i87017a5” in the ISaGRAF I/O connection window.



If the i-87017W-A5 is plugged in the RS-485 remote expansion base like the i-87K4/5/8/9 or the Ru-87P1/2/4/8, please connect “bus7000b” in the ISaGRAF I/O connection window first. Set proper communication parameters, then using the “i87017a5” function block in the programs . (Please refer to chapter 6 of the “User's Manual of the ISaGRAF Embedded controllers” for more information about programming the RS-485 remote I/O). The i-87017W-A5 's DCON utility setting should be **2's compliment format**. Type code can be 1B or 1C. **(DCON utility should be at least Rev. 4.4.5 beta C for supporting i-87017W-A5. Please download it at ftp://ftp.icpdas.com/pub/cd/8000cd/napdos/driver/dcon_utility/setup/)**

1B :	-150V	---	0	---	+150V	(Channel value is	-32768	---	0	---	+32767)
1C :	-50V	---	0	---	+50V	(Channel value is	-32768	---	0	---	+32767)

