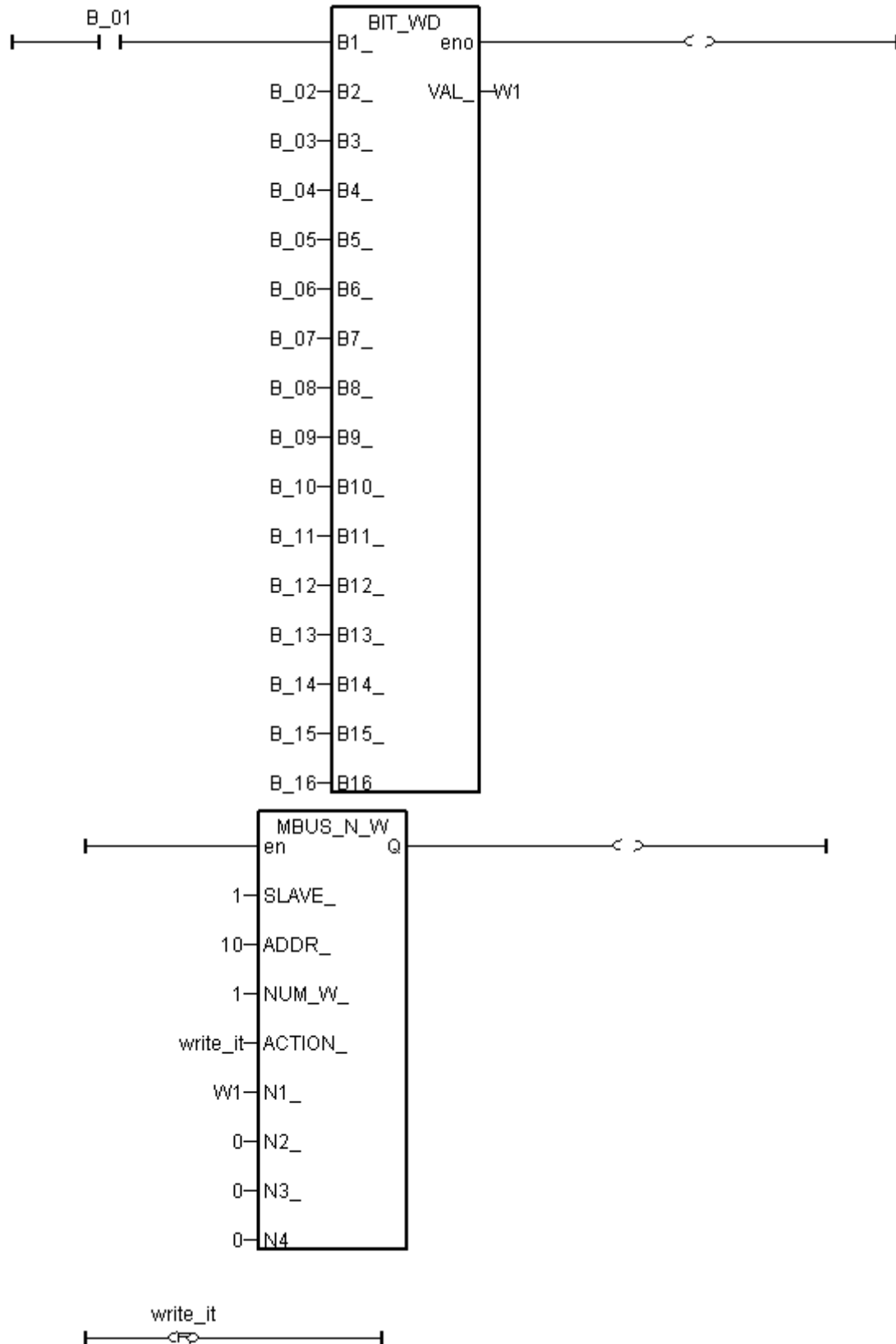


How to Write 16-bits to Modbus RTU devices by Modbus function call No. 6 ?

The standard Modbus function definition for writing bits is function call 5 & function call 15. Function call 5 write one bit only, while function call 15 write many bits.

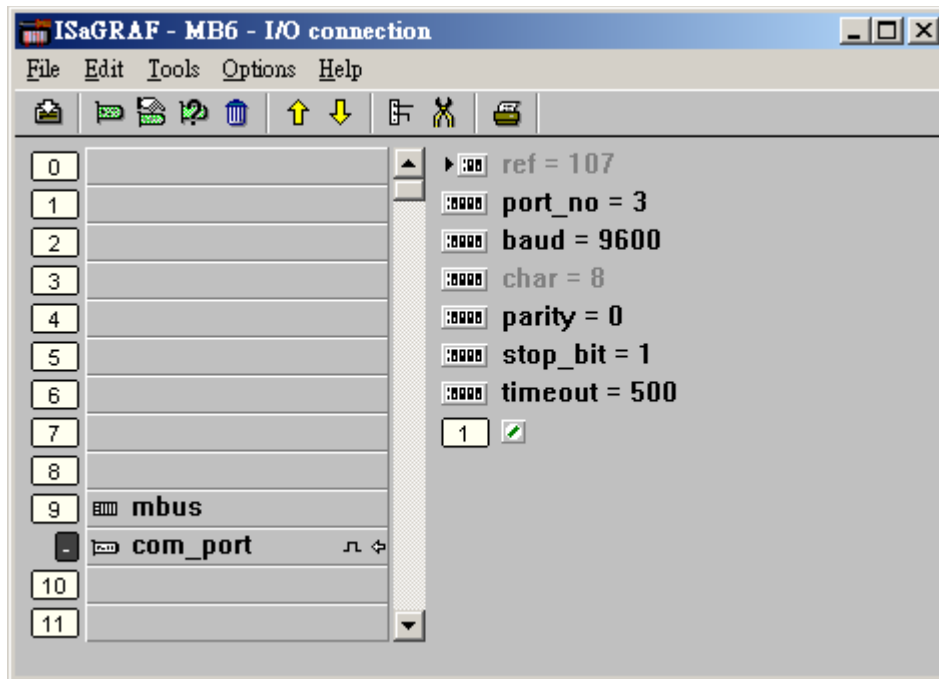
If there is special device which supports writing bits command by function call 6, user may use the below program to do it. (W1 is internal Integer, B_01 to B_16 & Write_it is internal Boolean)



And please remember to connect “mbus” in the ISaGRAF I/O connection windows (or if your device support Modbus ASCII, please use “mbus_asc”).

Please set proper port_no , baud, parity, stop_bit & timeout.

Please visit <http://www.icpdas.com/faq/isagraf.htm> FAQ-027 & 028 for more information about Modbus RTU Master functions.



You may download this example program at <http://www.icpdas.com/faq/isagraf.htm> FAQ-046