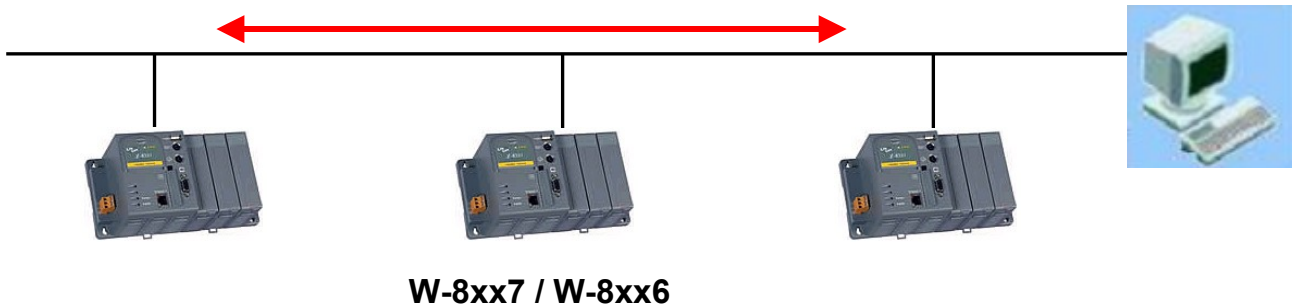


Wincon-8xx7 automatically report data to PC/InduSoft

Wincon-8xx7 / 8xx6 supports UDP Client & TCP/IP Client that can send message to PC/HMI or PC/InduSoft which supports UDP sever or TCP/IP Server via Ethernet communication.



W-8xx7 / W-8xx6

Below lists a InduSoft & IsaGRAF demo project using this feature.

InDusoft Demo is “TxRx_TCP_Server.zip” (FAQ-044 at <http://www.icpdas.com/faq/isagraf.htm>)

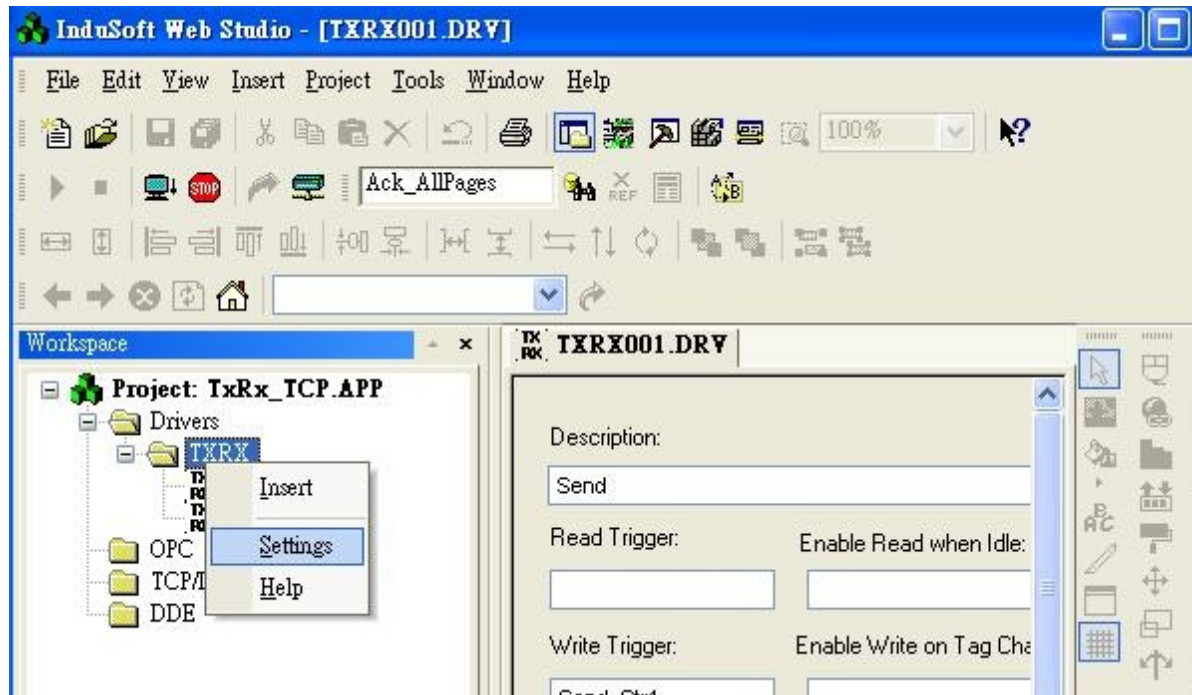
Add “driver” of “TXRX” into InduSoft - Driver

The screenshot shows the InduSoft Web Studio interface. The main window displays a project named 'TxRx_TCP_APP' with a tree view showing folders for 'Drivers', 'OPC', 'TCP/IP', and 'DDE'. The 'Drivers' folder is expanded, showing '1: Send' and '2: Receive'. A 'Communication Drivers' dialog box is open, listing available drivers and the selected 'TXRX' driver.

DLL	Description
8530	TOLEDO, Modulo 8530 (NT-2000-9x) [v1.00 - Beta 1]
9154	9154 - Controller 9154, Toledo Balance (9x/NT/2K) [v1.00]
A2420	ALTUS, ALNET I Protocol with AL2420 (NT-2000-9x) [v1.04]
A250	Driver for A250 Equipment (9x/NT/2K) [v1.26]
A500	WEG - A500 (NT-2000-9x) [v1.02]
ABCIP	Allen Bradley ?Ethernet CIP Protocol (NT/2000/9x/CE) [v1...
ABENI	Allen Bradley, AB-1761-NET-ENI Gateway interface (NT-20...
ABKE	Allen Bradley, DF1 Protocol (PLC2, PLC5 and SLC500) Fa...
ABTCP	Allen Bradley Ethernet, DF1 Protocol (PLC2, PLC5 and SL...

DLL	Description
TXRX	Send and receive data using a serial or TCP/IP port(NT-2...

Settings in the TXRX

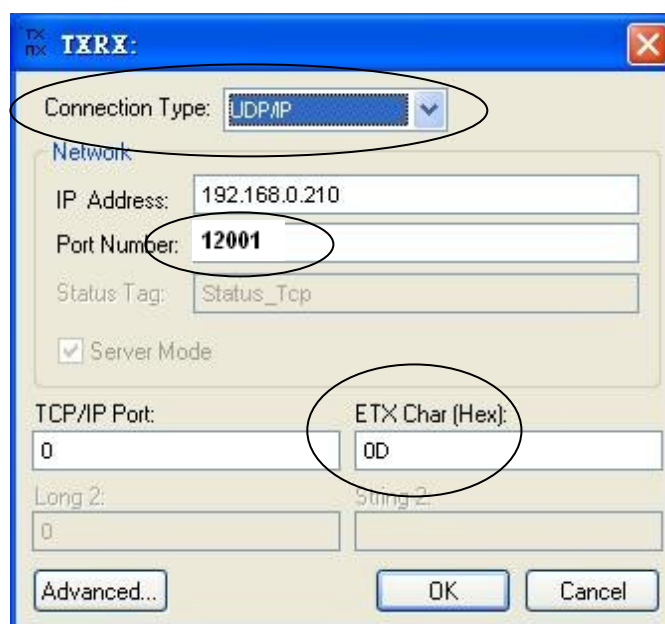


Connection Type should be “UDP/IP”

Port Number should be set to “**12001**” if wishing to receive message reporting from W-8xx7.

The “IP Address” is not necessary when “RXTX” is for receiving message from W-8xx7. It is for sending message out by Indusoft.

The ETX is the Char at the end of a message to be check as a valid message by TXRX. Setting as 0D means <Enter> char.



Please update Wincon ISaGRAF driver to version of “3.29” or higher version.

ISaGRAF demo project is “Wdmo_19.pia” & “Wdmo_19A.pia”

ftp://ftp.icpdas.com/pub/cd/wincon_isagraf/napdos/isagraf/wincon/demo/

The “udp_ip” is to setup a udp_ip server & client in the W-8xx7

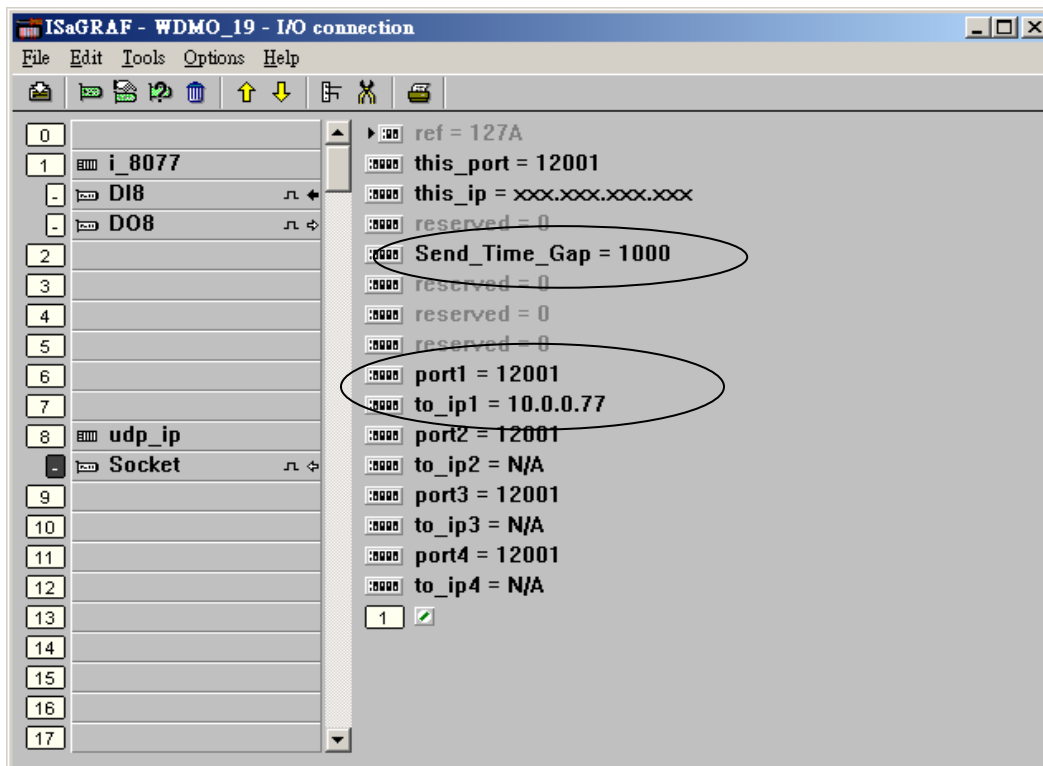
port1 & to_ip1 should be set to correct value if using 1st connection to send message to InsuSoft's “TXRX” or other udp_ip server.

The “Send_Time_Gap” should be \geq 1000 ms when sending message to InDuSoft.

(* “Send_Time_Gap” setting is important in the IO connection - “udp_ip”, some HMI or devices can not accept message sent too frequent.

Send_Time_Gap : 10 ~ 5000 . Time gap between two sending message. Unit is ms.

For example, setting as 250, when ISaGRAF program call “udp_send” to send many message at almost the same time, these message will be sent out one by one every 250 ms past until all message is sending over. *)



How to Test ?

1. Run the InduSoft Demo Project “TxRx_TCP_Server.zip” on a PC with InduSoft installed.
2. Download the “Wdmo_19” IsaGRAF project to a Wincon-8xx7 with driver version 3.29 or higher.
3. Plug all ethernet cable well.
4. Switch one of i-8077's DI 0 to 7 from OFF to ON, InduSoft should receive the message sent by W-8xx7. If not, please check the IP & port setting is correct or not.

Please refer to IsaGRAF FAQ-029 for more information about UDP Client & Server.

<http://www.icpdas.com/faq/isagraf.htm>