

## Can not find I/O boards in the ISaGRAF I/O connection window ?

**Ans:** It is because user forget to install the “I/O libraries”. Please try below steps.

1. You may install the “ICP DAS Utilities For ISaGRAF”

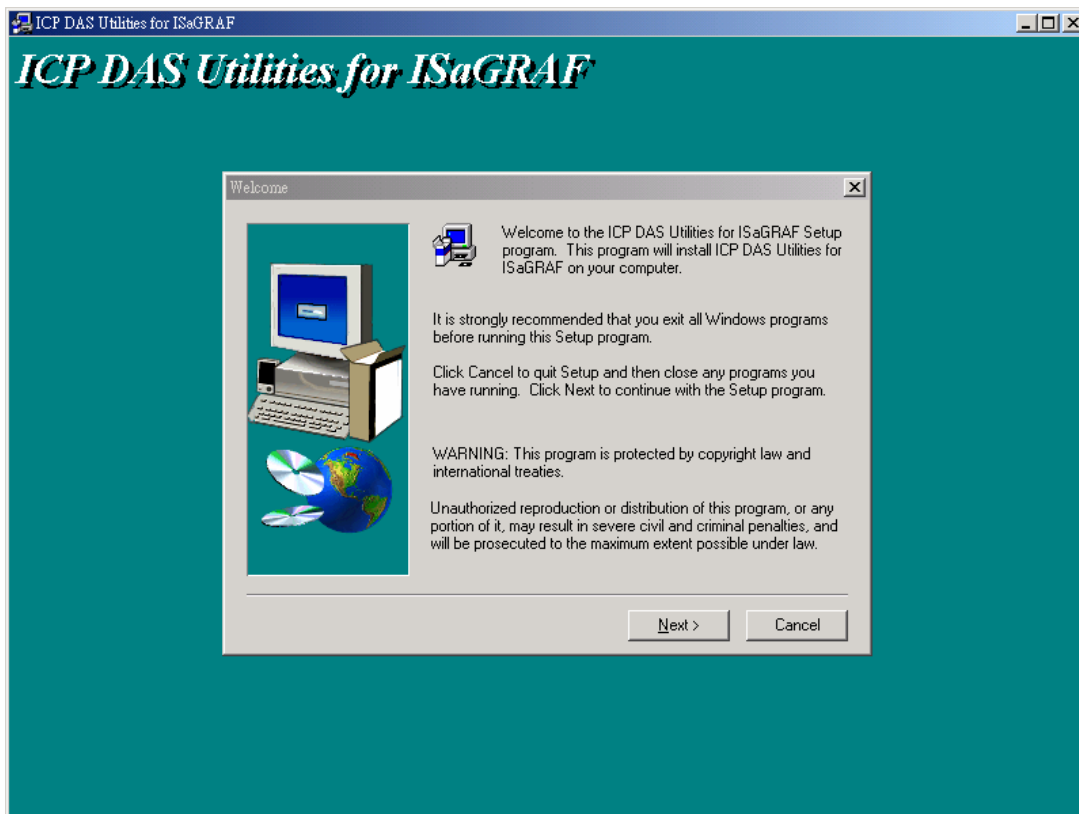
The “ICP DAS Utilities For ISaGRAF” consists of 3 major items.

I-8xx7, 7188EG/XG I/O library

Modem\_Link utility (Chapter 13)

Auto-scan I/O utility (Section 3.6)

The ISaGRAF Workbench software program must be installed before attempting to install the “ICP DAS Utilities for ISaGRAF”. There is a CD-ROM supplied with each of the I-8xx7 controllers with the “ICP DAS Utilities for ISaGRAF”. Please insert the CD-ROM into your CD-ROM drive. Then run “setup.exe” in the folder of CD-ROM: \napdos\isagraf\ . Follow the steps to install it.



### Note:

If “setup.exe” is not in your CD-ROM, please download “**ICP DAS Utilities For ISaGRAF.zip**” or “**io\_lib.zip**” from <ftp://ftp.icpdas.com/pub/cd/8000cd/napdos/isagraf/> .

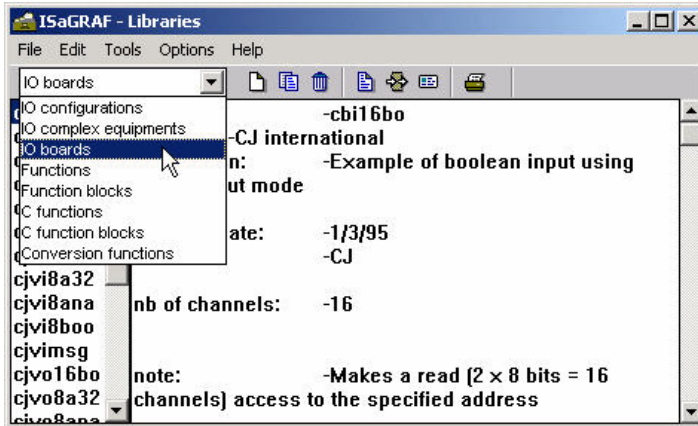
2. Or you may just install only the items you need.

Click on the Windows "Start" button, then click on the "Program" button, then click on the "ISaGRAF"

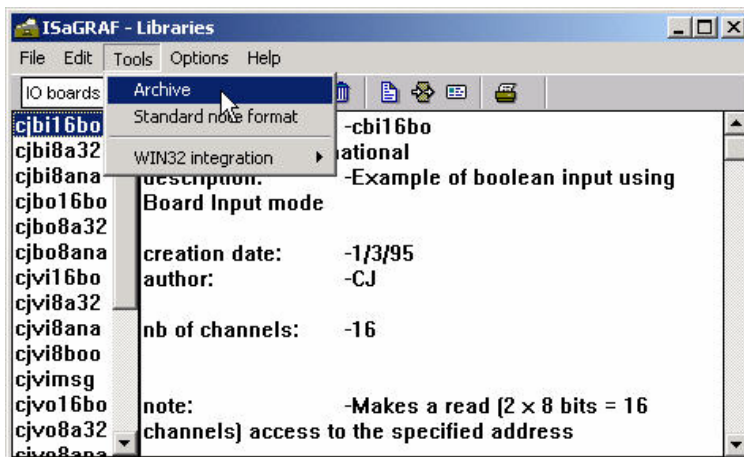
button, then click on the "Libraries" button as shown below.



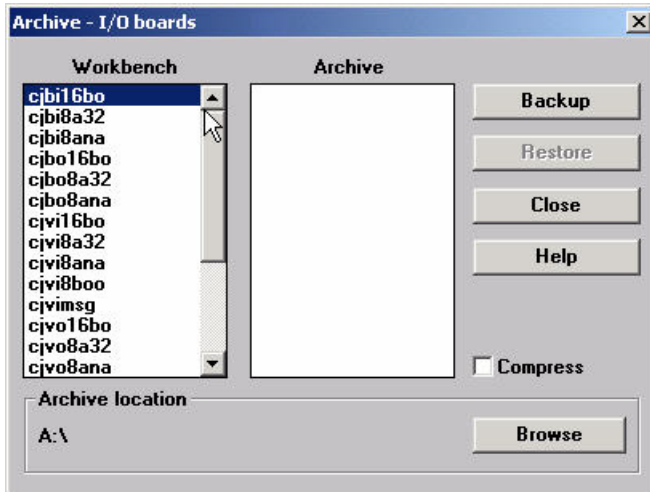
When you click on the "Libraries" icon, the following window will open:



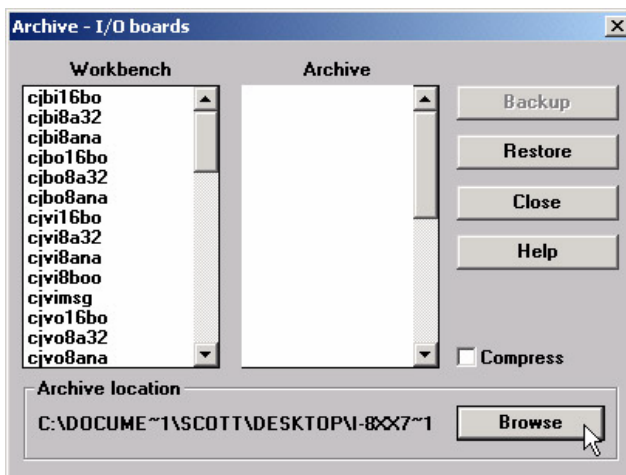
Select "IO Boards" (IO complex equipments , **c functions** or **c function blocks** as you need) from the drop down menu just below the file menu bar. Next, select the "Tools" option from the main menu bar, then select "Archive" from the file menu bar as shown below.



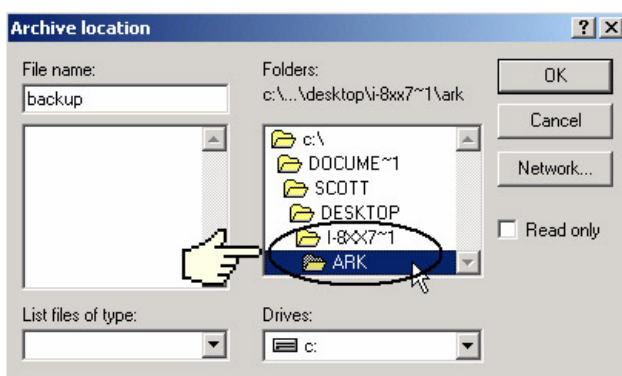
The "Archive - I/O Boards" window will appear as shown below.



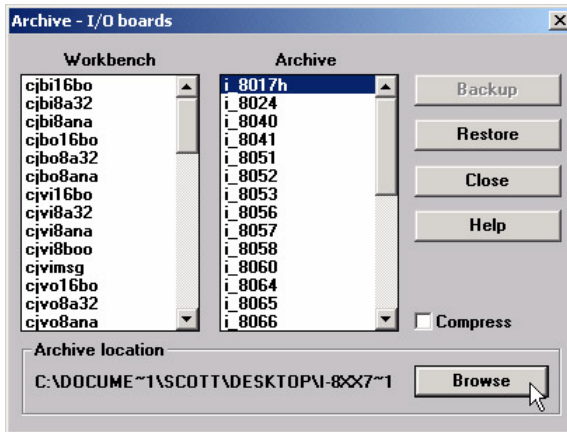
To find the drivers for the I-8xx7 controller system, click on the "Browse" button as shown below.



When you click on the "Browse" button, an "Archive Location" dialog box will open.



The important item to locate is the "CD\_ROM: \NAPDOS\ISaGRAF\ARK\" sub-directory (the location of these sub-directories) may be different depending on where you have the driver files located. After you have located the " CD\_ROM: \NAPDOS\ISaGRAF\ARK\" sub-directory, click on the "OK" button.



The drivers for the I-8xx7 control boards now appear in the "Archive" list box. Select all the required I-8xx7 I/O boards, and then click on the "Restore" button. The selected drivers will now install into the ISaGRAF.