

Classification	Win-GRAF Chinese FAQ							
Author	Adam Chen	Version	1.0.0	Date	2016,6	Page	1 / 8	

How to build Your own Function, Function Block and Library Project in the Win-GRAF PAC ?

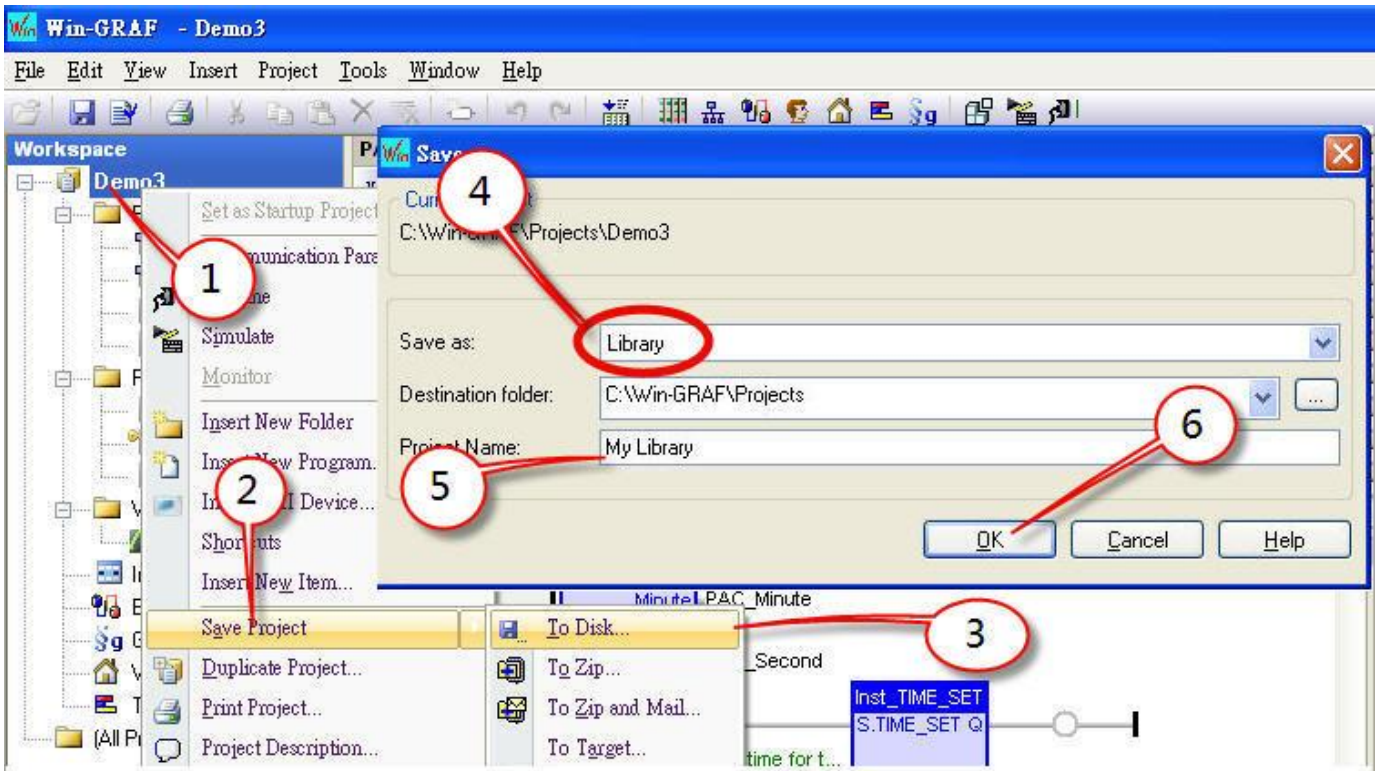
This FAQ describes how to save the existing Function or Function Block of an Win-GRAF project as a Library Project, or start a new Library Project.

1.1. To build a new Library Project

There are two ways to establish. Please see the following description.

- **To Save the existing Project as the Library Project**

First run the Win-GRAF, open an existing Project file (in this case: Demo3), mouse right click on **Project name > Save Project > To Disk**, choose save as **Library** type, enter your Project name (for example: My Library), and then press **OK** to save the Library Project.



The method to transfer a function from an existing project to the type of Library Project.

Classification	Win-GRAF Chinese FAQ							
Author	Adam Chen	Version	1.0.0	Date	2016,6	Page	2 / 8	

● Establish a new Library Project

The other method is to add a new Project. First, run the Win-GRAF, click the menu **File > Add New Project**, select the project type of “Library”, enter your new project Name (for example: My Library01), and then click **NEXT** to build your Library Project.

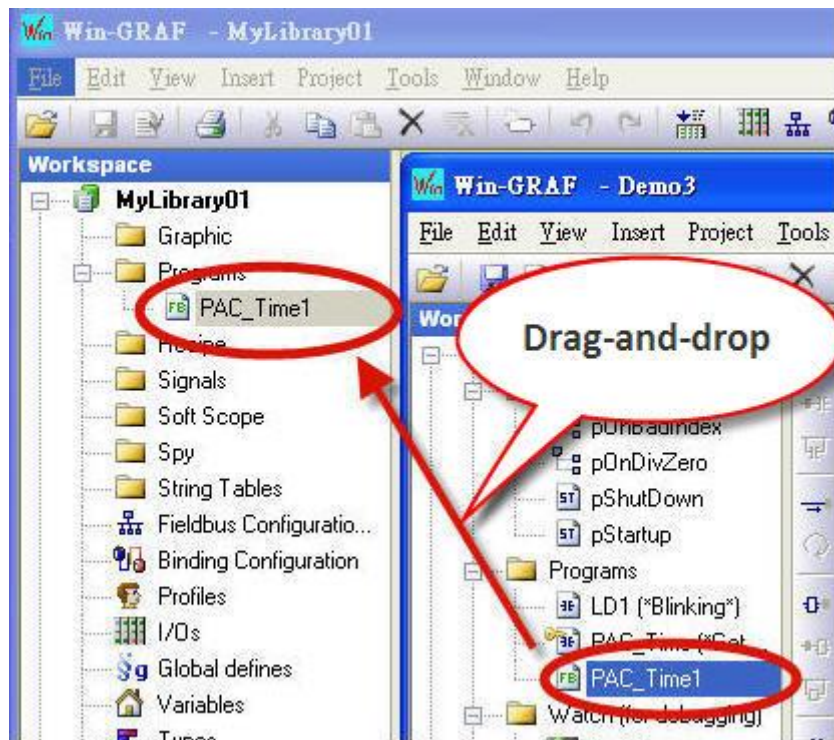
The screenshot illustrates the process of creating a new Library Project in Win-GRAF. It shows the 'File' menu with 'Add New Project...' selected (1). The 'Project wizard' dialog is open, showing 'Library' selected as the project type (3). The 'Name' field is filled with 'My Library01' (4), and the 'Next' button is highlighted (5). A text box indicates to 'Click NEXT after the establishment of the screen'.

Classification	Win-GRAF Chinese FAQ							
Author	Adam Chen	Version	1.0.0	Date	2016,6	Page	3 / 8	

1.2. Add a Function or Function Block

- **Copy the Function or Function Block from the existing Project to the Library Project**

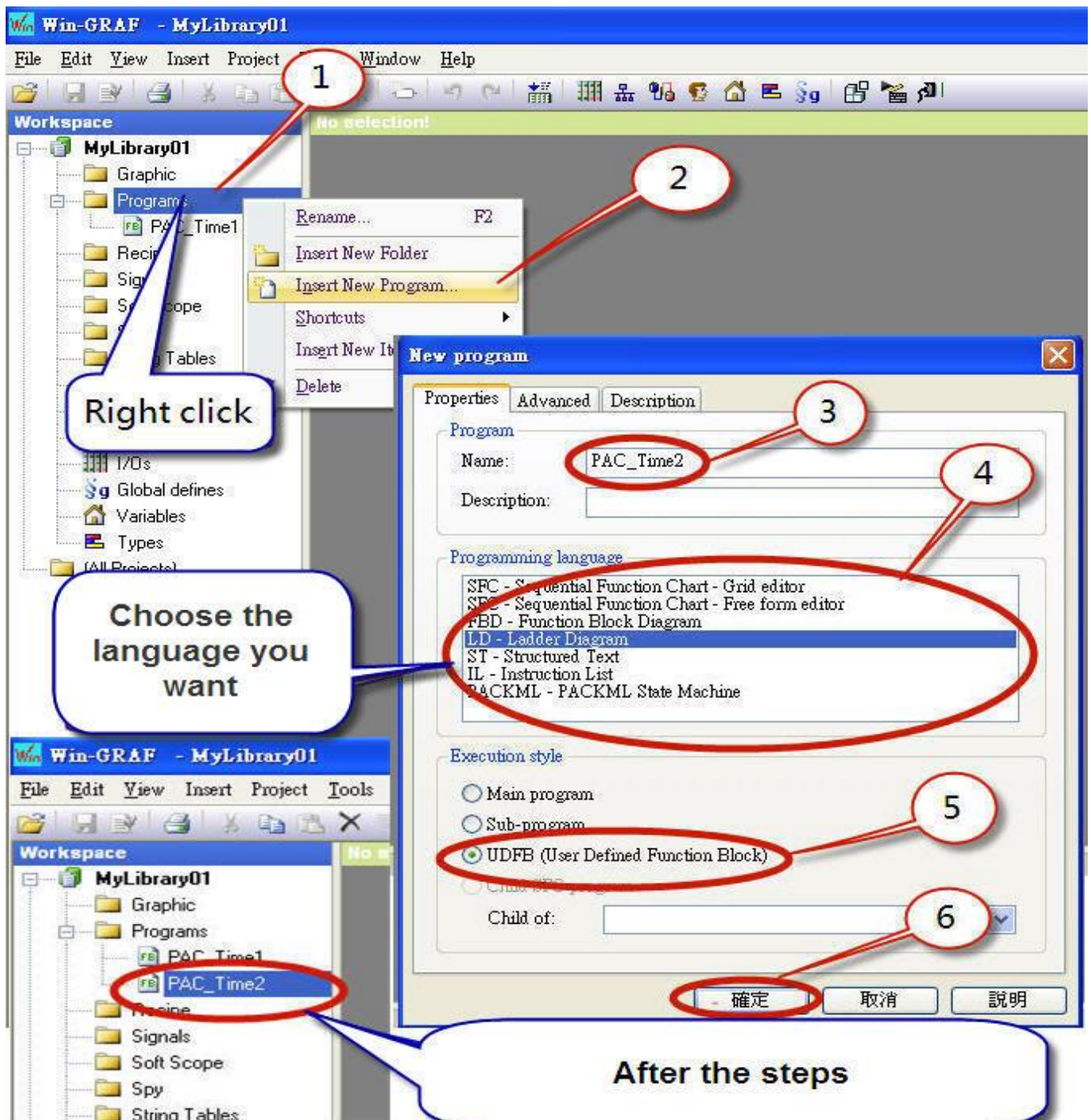
First, run two Win-GRAF, one opens your existing project, one opens the Library Project (The Library Project will has a green LOGO on the left side of the project name.), and then you can copy the program by drag-and-drop from the existing project to the Library Project.



Classification	Win-GRAF Chinese FAQ						
Author	Adam Chen	Version	1.0.0	Date	2016,6	Page	4 / 8

● Create a New Function or Function Block in the Library Project

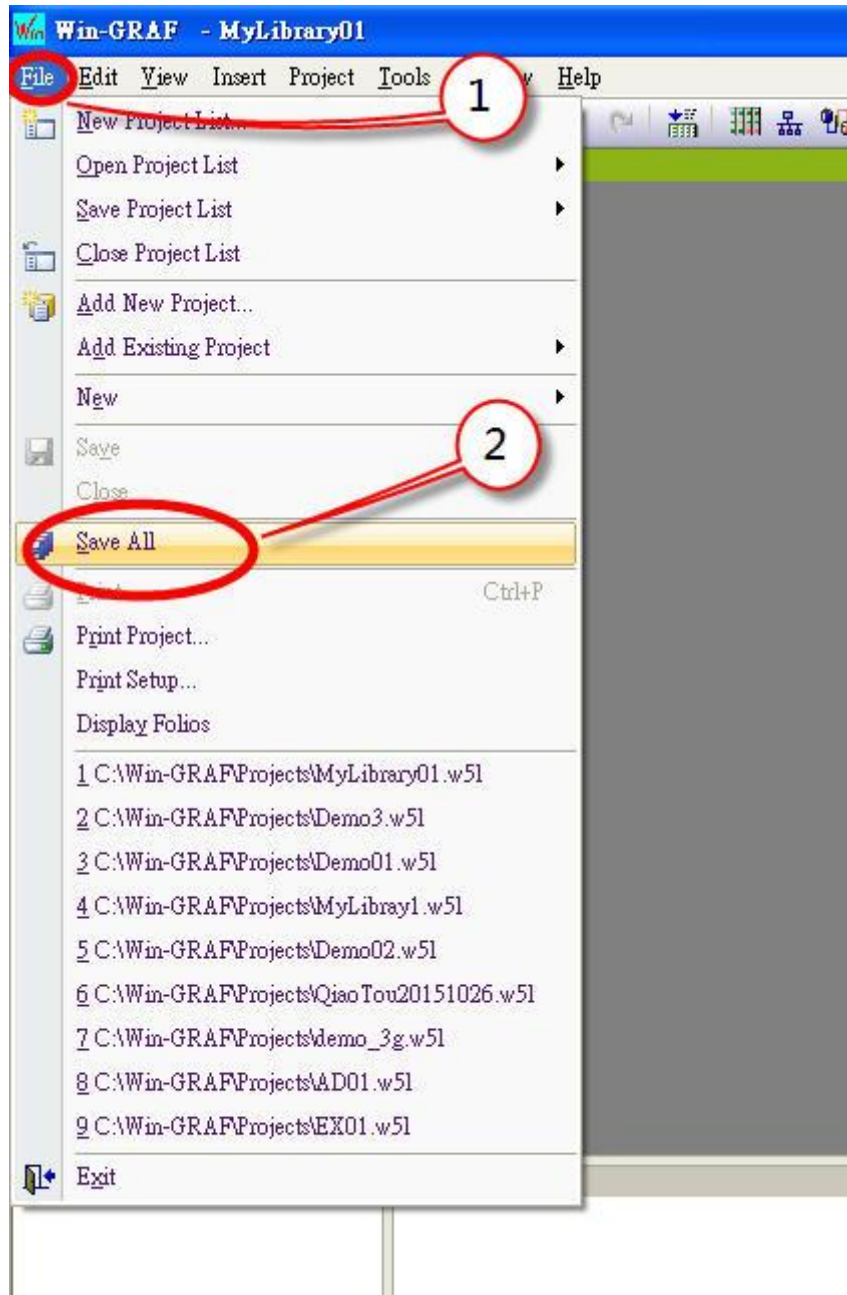
First, run the Win-GRAF, open the Library Project, right click on **Programs**, select **Insert New Program**, enter your new Function name (For instance: PAC_Time2), choose the **Programming language** you want, check the box of **UDFB(User Defined Function Block)**, press **OK**, and then a Function or Function Block will be added as below.



Classification	Win-GRAF Chinese FAQ							
Author	Adam Chen	Version	1.0.0	Date	2016,6	Page	5 / 8	

● Save Library Project

Click **File > Save All** to save your Library Project.

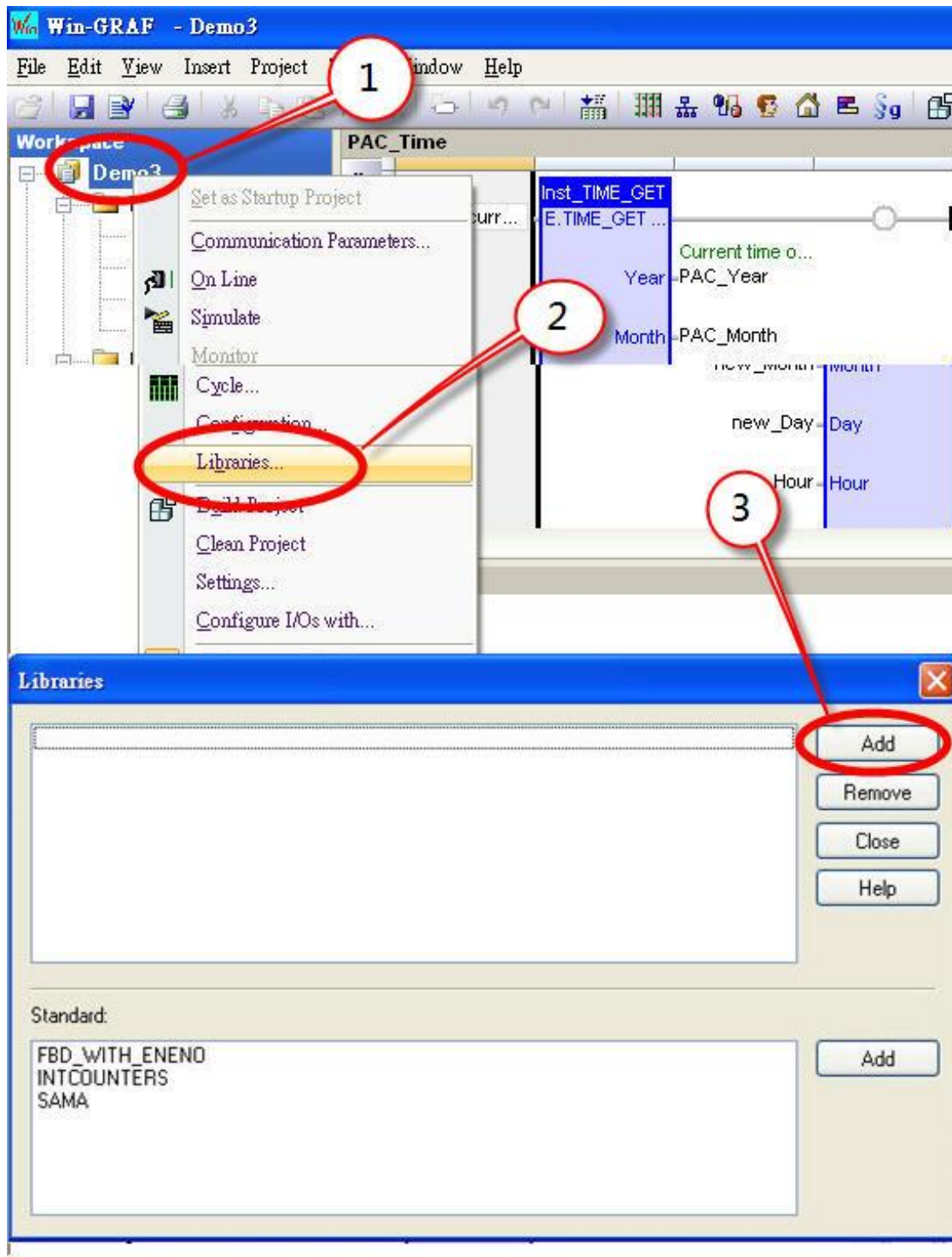


Classification	Win-GRAF Chinese FAQ							
Author	Adam Chen	Version	1.0.0	Date	2016,6	Page	6 / 8	

1.3. Add a Library in an Existing Project

- **Add a Library**

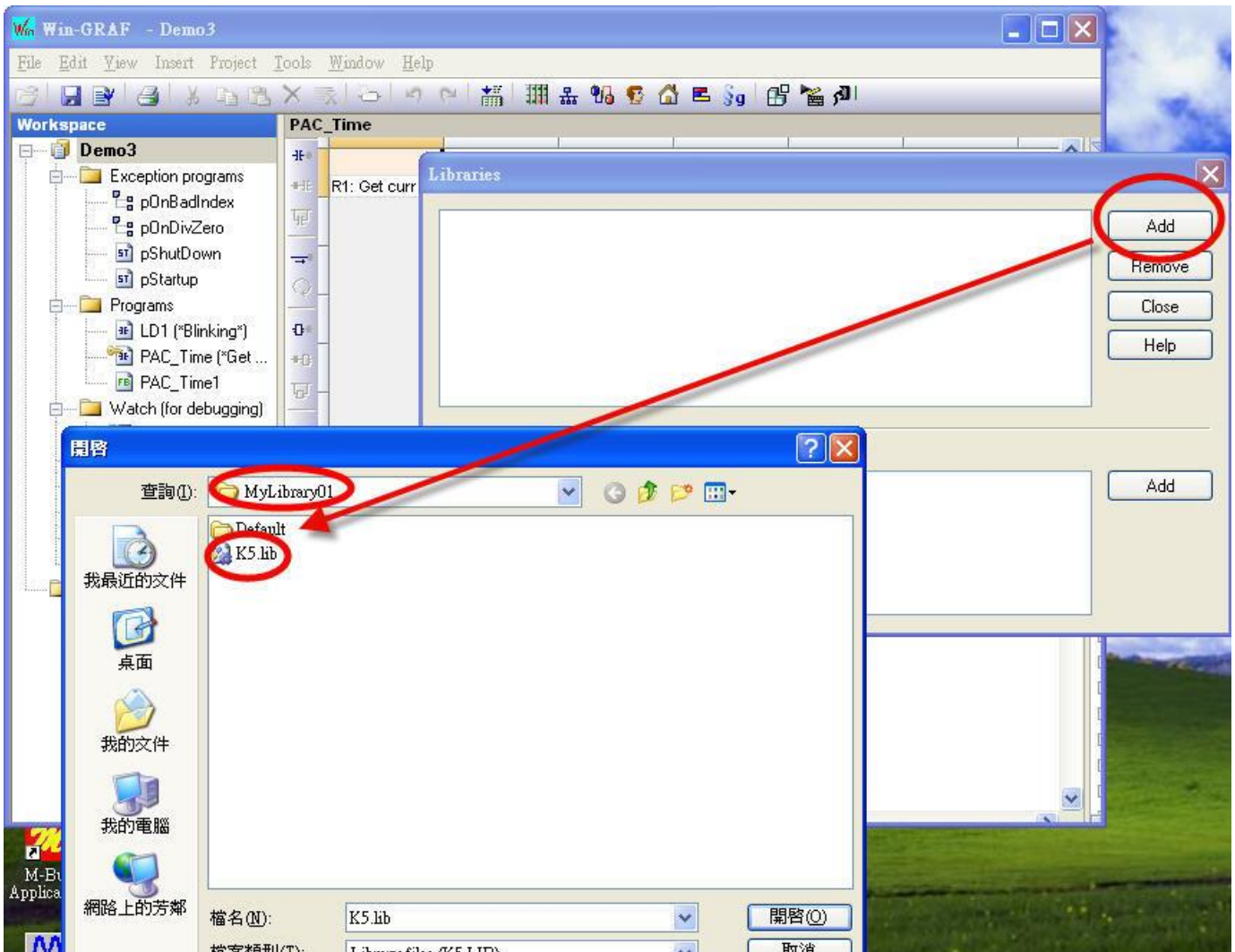
First, run the Win-GRAF, open your project, right mouse click on the project name, select **Libraries**, and click **Add** button of the "libraries" window.



Classification	Win-GRAF Chinese FAQ							
Author	Adam Chen	Version	1.0.0	Date	2016,6	Page	7 / 8	

● Open Library Project way

In the “open” window, browse for your Win-GRAF folder and your project folder to select your Library project (in this case: **MyLibrary01**), and then choose "K5.lib".



Classification	Win-GRAF Chinese FAQ							
Author	Adam Chen	Version	1.0.0	Date	2016,6	Page	8 / 8	

● **To Confirm the New Library Project**

After the adding steps, your new Library Project will appear in the **Blocks**, click the project name will show the new Function or Function Block.

