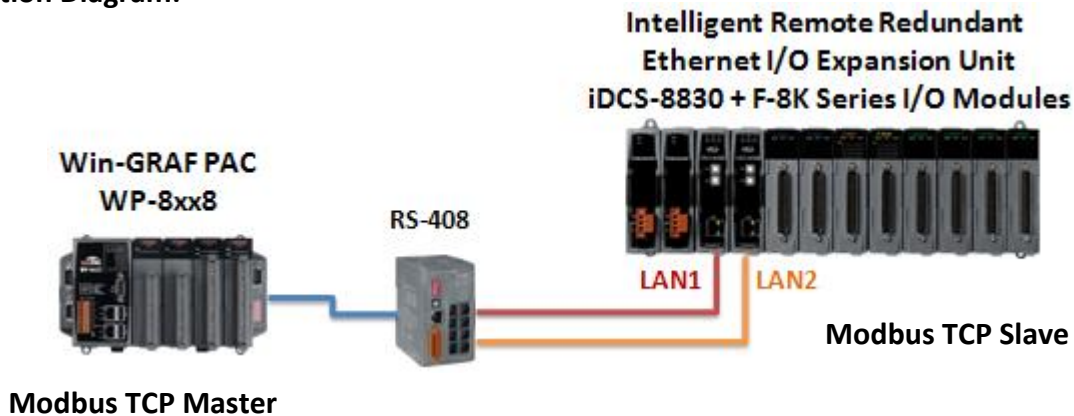


Classification	Win-GRAF English FAQ-012						
Author	Spike Huang	Version	1.0.0	Date	Jan. 2016	Page	1 / 6

How to Use the Win-GRAF PAC to Connect the Modbus TCP Slave Device that Has Two IP Addresses (Redundancy Settings)?

This section will list the way to create the redundant "Modbus Master Request", when one IP of the Modbus TCP Slave devices is disconnected, the other IP can still normally to be read/written data. In addition, the user can refer the FAQ-009 and FAQ-011 to know how to enable the Win-GRAF PAC as the Modbus RTU/ASCII Master or Modbus TCP/UDP Master.

Application Diagram:



Follow The Steps:

1. Click the "Open MODBUS:", and then click the menu bar "Tools" > "Export".

The screenshot shows the Win-GRAF software interface. The 'Tools' menu is open, and the 'Export...' option is highlighted. A red box highlights the 'Open MODBUS: 192.168.1.100:502' entry in the IO Drivers list. A red box highlights the 'Export...' option in the Tools menu. A red box highlights the 'Request' table at the bottom of the interface.

Request	Slave/Unit	Start	End	Period	Time	Priority
<2> Read Input Bits	1	1	3	Periodic	1000	8000
<4> Read Input Registers	1	1	5	Periodic	1000	8000

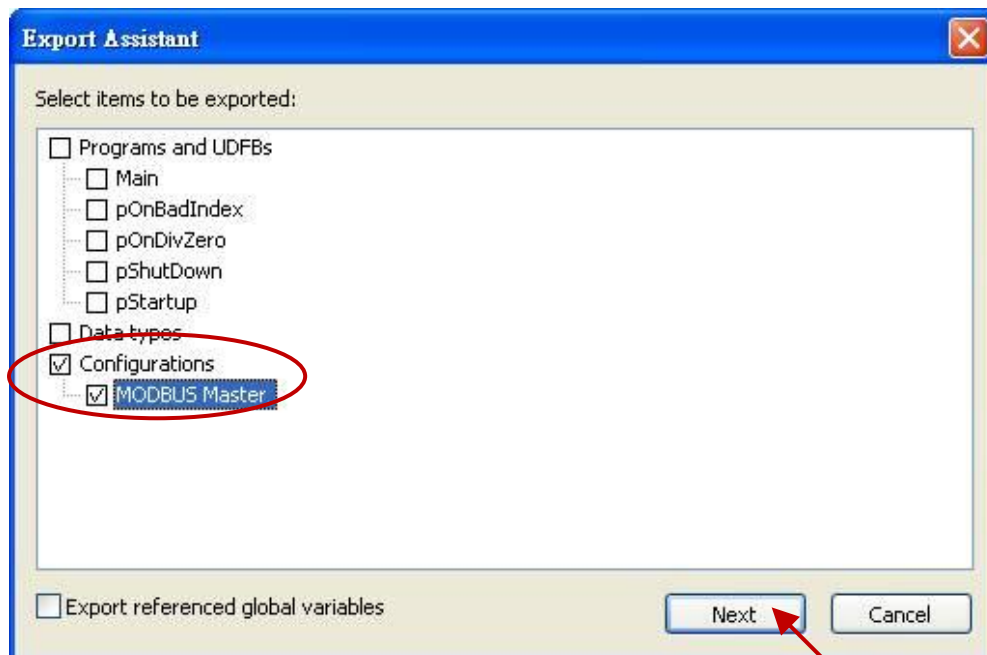
Each Modbus TCP Master can only set to connect one Slave IP address, so here we will show the way to copy and generate the second Modbus Master to connect the second Slave IP address.

Classification	Win-GRAF English FAQ-012						
Author	Spike Huang	Version	1.0.0	Date	Jan. 2016	Page	2 / 6

2. In the “Export Assistant” window, click “Export some project items (XML)” and “Next”.

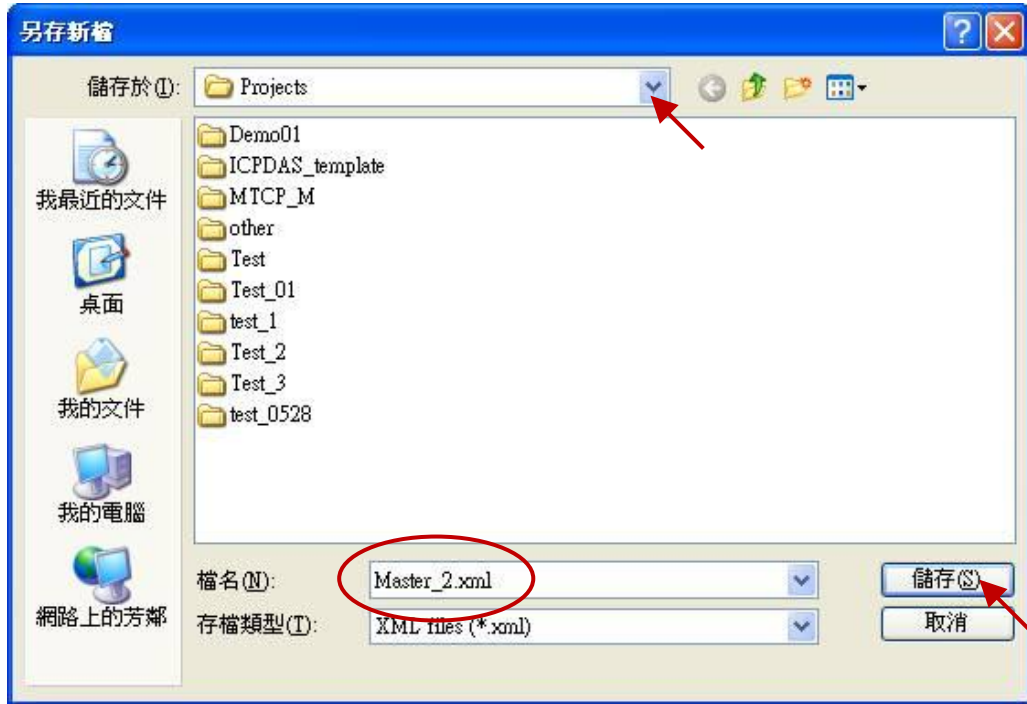


3. Check the “Configurations” and uncheck all other items, and then click “Next”.



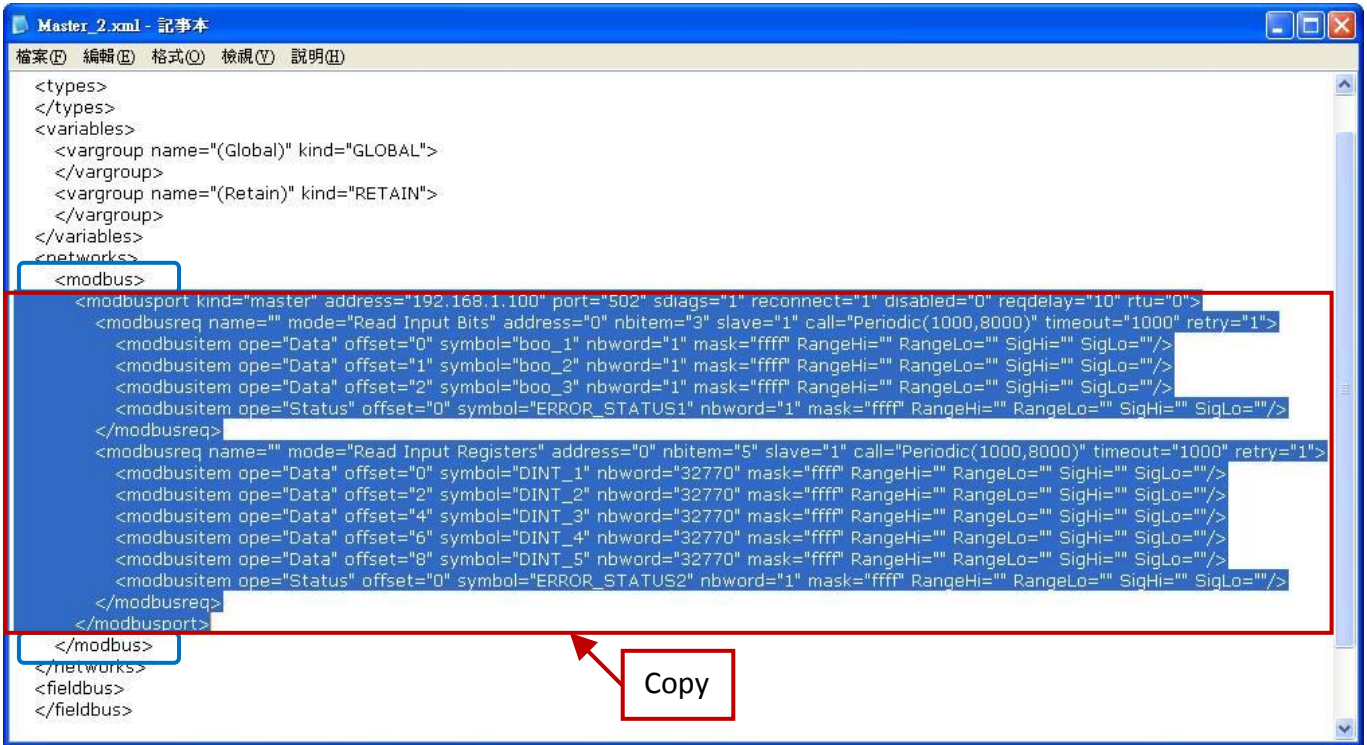
Classification	Win-GRAF English FAQ-012							
Author	Spike Huang	Version	1.0.0	Date	Jan. 2016	Page	3 / 6	

4. Browse a suitable path (default in C:\Win-GRAF\Projects) and named for the file (e.g., Master_2.xml), and then click "Save" button. Finally, click "Finish" to export the settings.

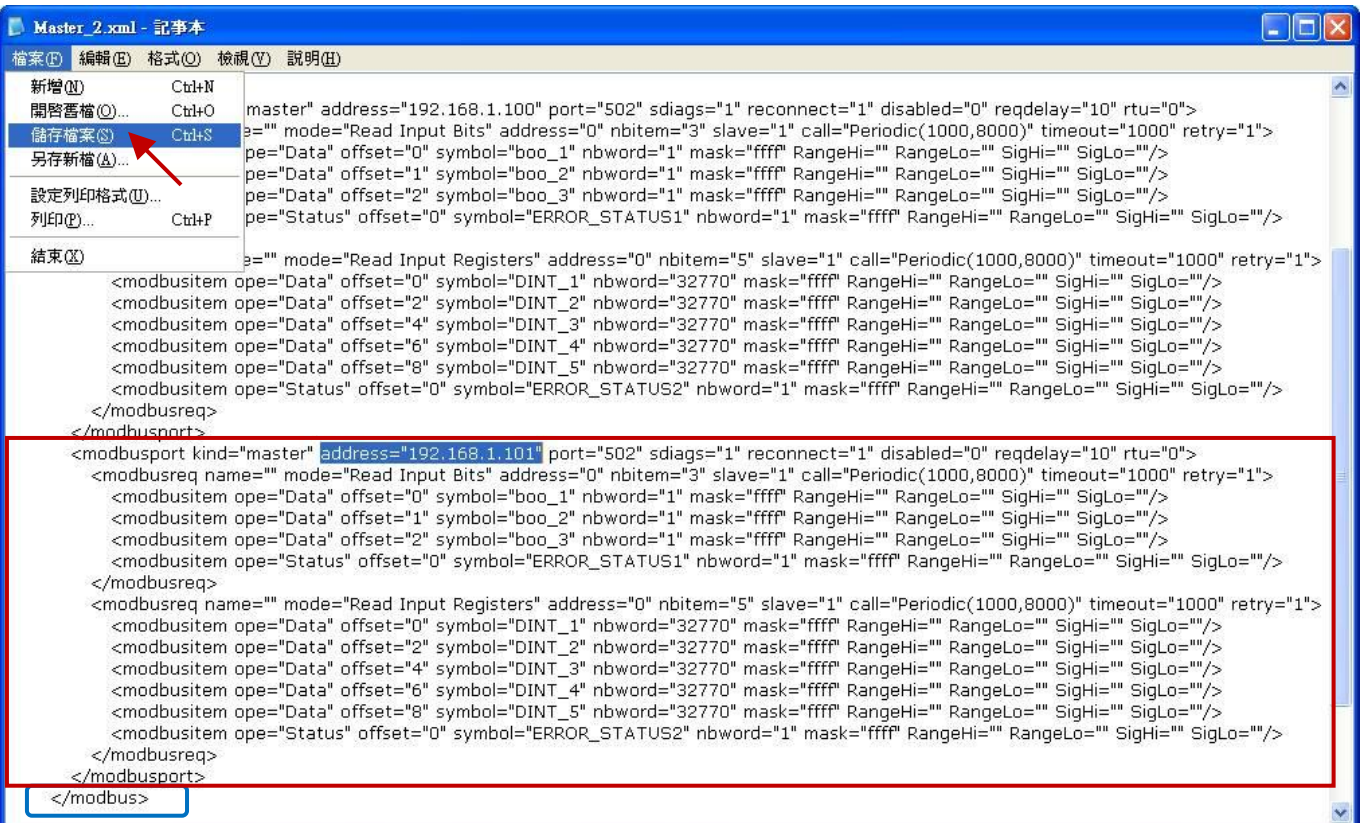


Classification	Win-GRAF English FAQ-012						
Author	Spike Huang	Version	1.0.0	Date	Jan. 2016	Page	4 / 6

5. Using the Notepad software to open the file “.xml” that exported in the step 4, and then copy the content between the <modbus> and </modbus>.

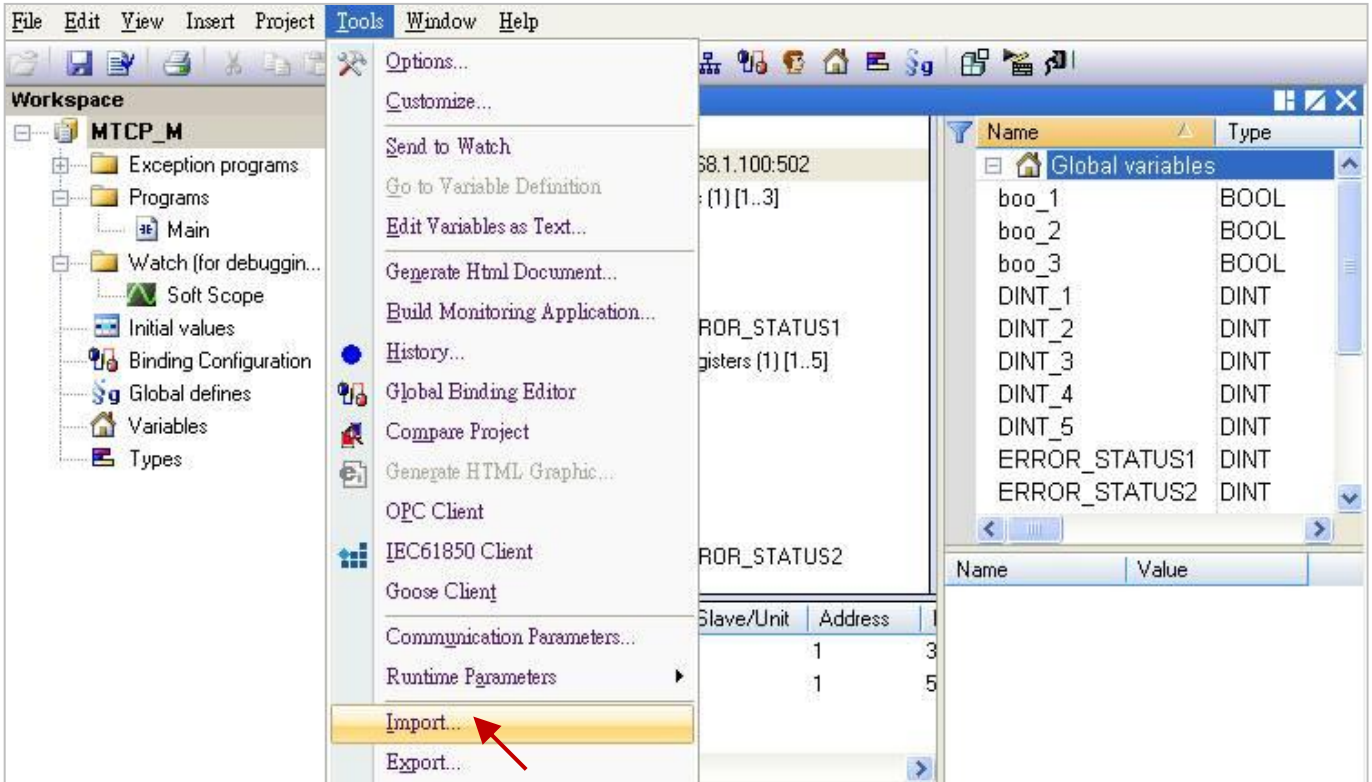


6. Paste the copied content above the </modbus>, and change the address to the second IP address of the Modbus Slave device (e.g., “192.168.1.101”), then save and close the file.



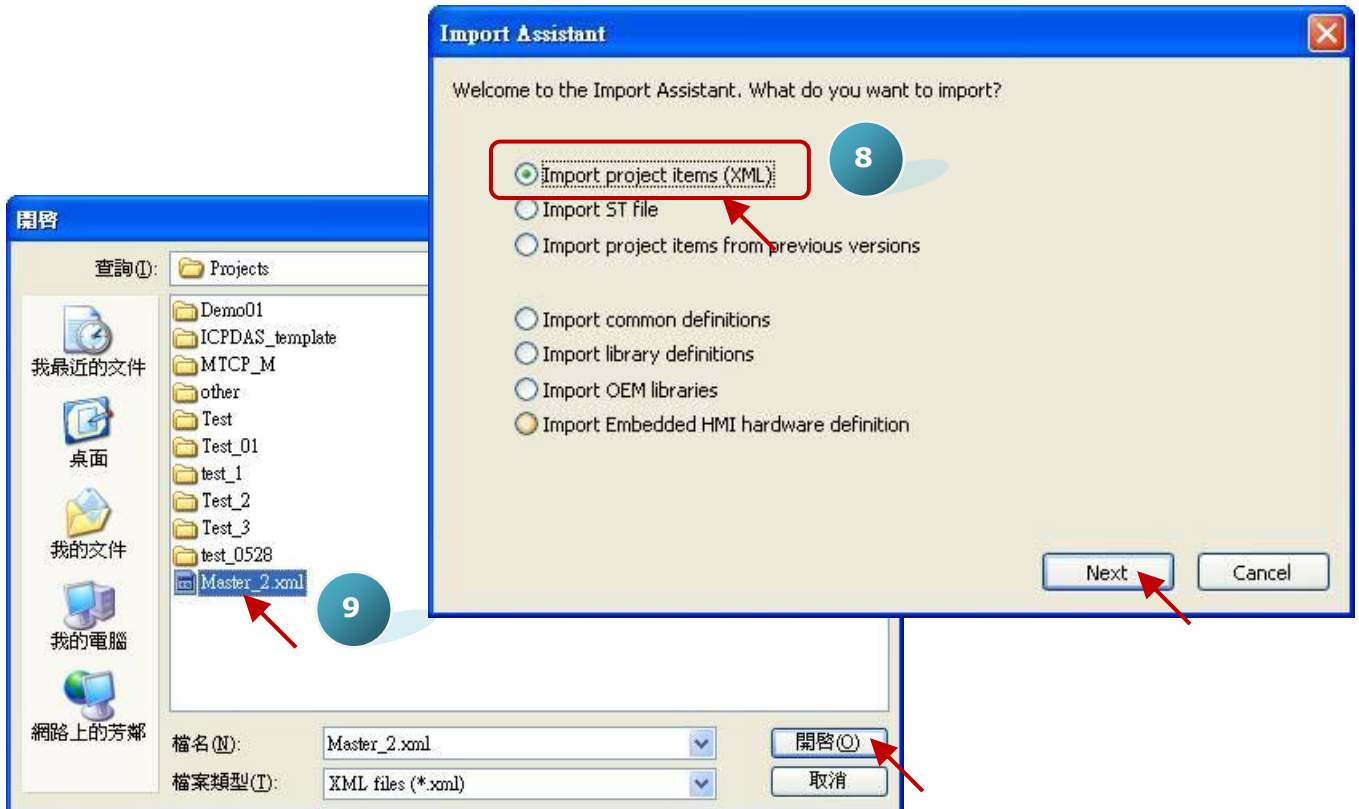
Classification	Win-GRAF English FAQ-012						
Author	Spike Huang	Version	1.0.0	Date	Jan. 2016	Page	5 / 6

7. Click the Win-GRAF menu bar “Tools” > “Import”.



8. In the “Import Assistant” window, click “Import project items (XML)” and “Next”.

9. Select the file you want to import (e.g., “Master_2.xml”) and click “Open” button.



Classification	Win-GRAF English FAQ-012						
Author	Spike Huang	Version	1.0.0	Date	Jan. 2016	Page	6 / 6

10. Click “Finish” to finish the import action.



11. In the “IO Drivers” window, there has added a new “Open MODBUS” setting item that includes two “Modbus Master Request” for using to read the DI and AI. One “Error report” is used to check the IP connecting status, so please add two “DINT” variables in the Variable area (e.g., “ERROR_STATUS11”, “ERROR_STATUS21”) and double click the “Error report” to assign variables.

