

Classification	Win-GRAF English FAQ-001						
Author	Janice Hong	Version	1.0.0	Date	Oct. 2015	Page	1 / 7

How to Install and Run the Win-GRAF Workbench?

1.1. Install the Win-GRAF Workbench

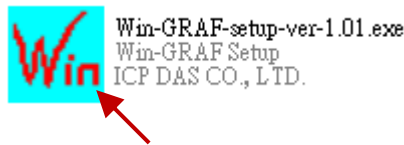
Before installing the Win-GRAF Workbench, check the installation environment on your PC.

System requirements:

- **O.S.:** Windows XP, Windows Vista, Windows 7, Windows 8 (32-bit or 64-bit)
- **Microsoft .Net Framework 3.5** (Download it on the Microsoft web site: <http://www.microsoft.com/zh-tw/download/details.aspx?id=22>)
- **RAM:** 1 GB minimum (Recommended: 2 GB or more)
- **Available hard-disk space:** 200 MB minimum

Installation Steps:

1. Double-click the “Win-GRAF-setup-ver-x.xx.exe” file in the Win-GRAF installation CD (or download the latest version of the Win-GRAF Workbench on the website: http://www.icpdas.com/root/product/solutions/softplc_based_on_pac/win-graf/download/win-graf-driver.html) to begin the process.

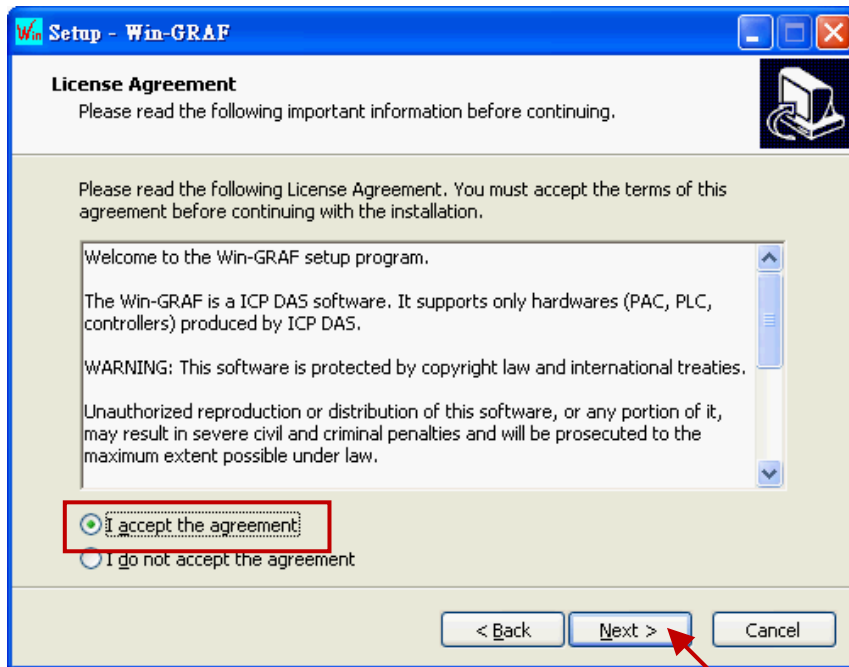


2. Click “Next” to continue.

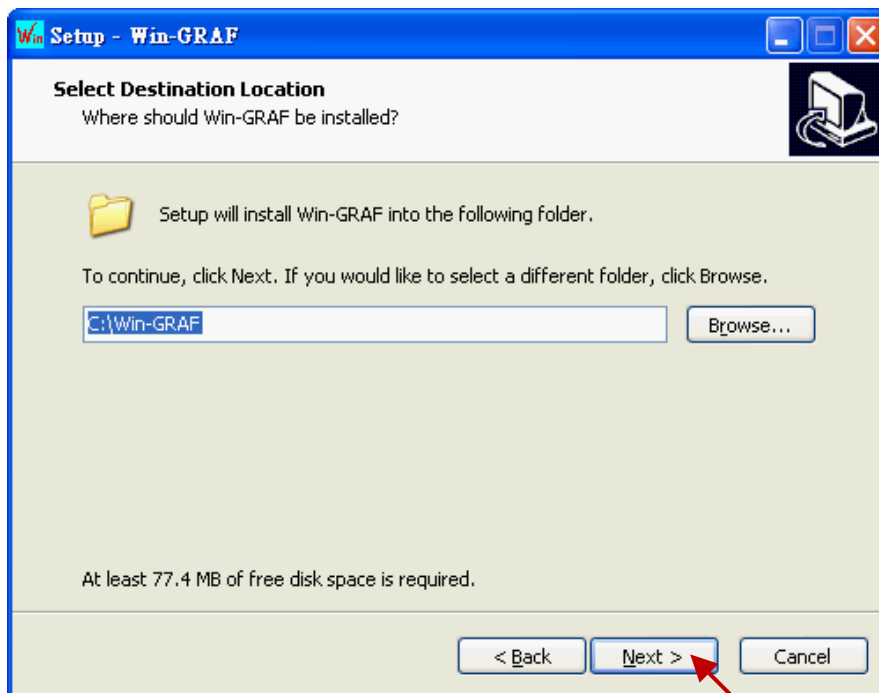


Classification	Win-GRAF English FAQ-001						
Author	Janice Hong	Version	1.0.0	Date	Oct. 2015	Page	2 / 7

3. Select “I accept the agreement”, and then click “Next” to continue.

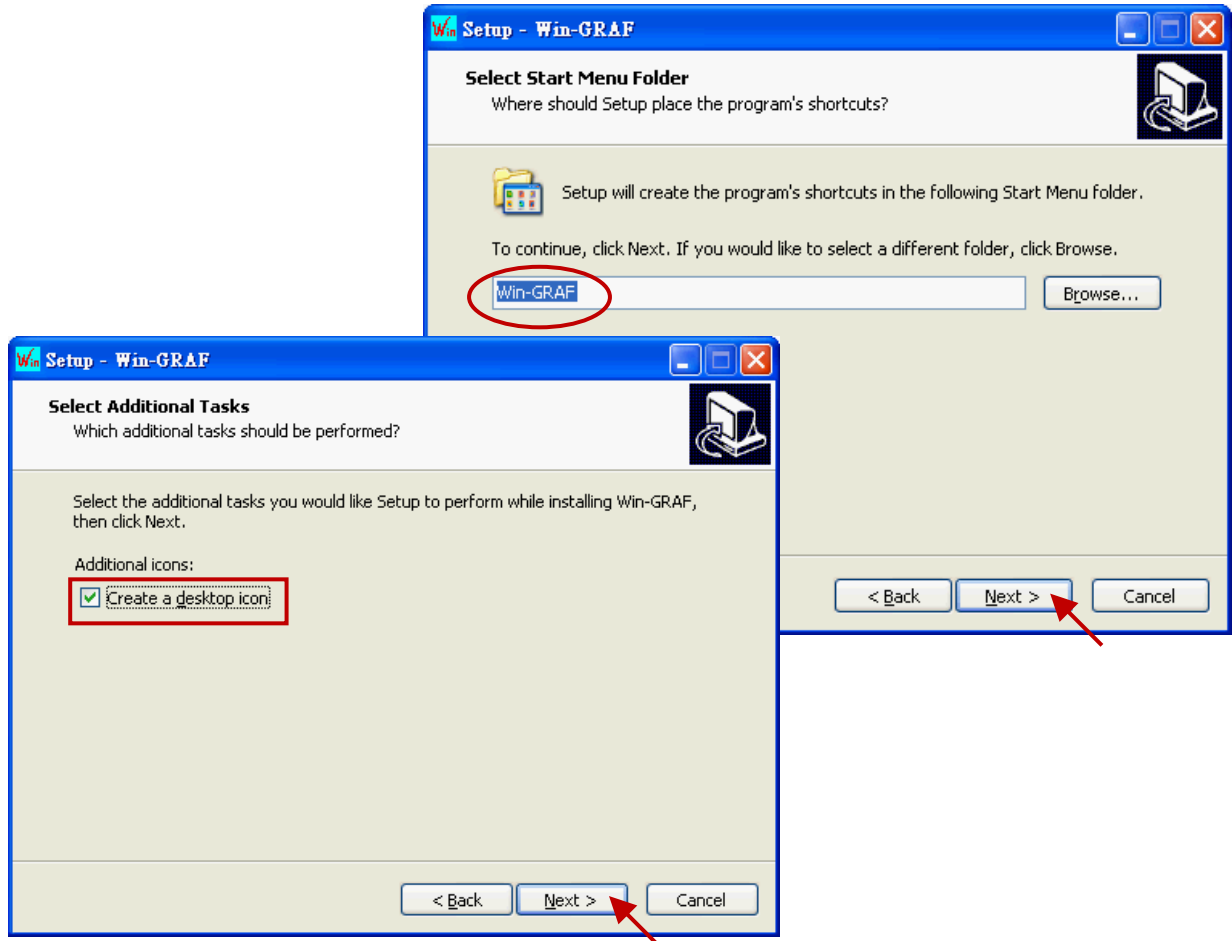


4. Recommend to use the default installation path (i.e., “C:\Win-GRAF”) and then click “Next” to continue.

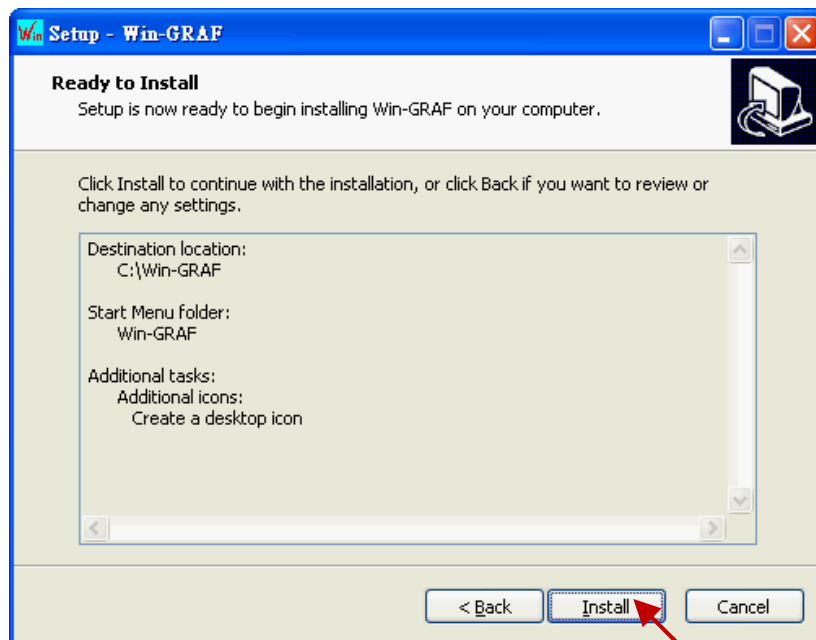


Classification	Win-GRAF English FAQ-001						
Author	Janice Hong	Version	1.0.0	Date	Oct. 2015	Page	3 / 7

- Click "Next" to add a "Win-GRAF" folder shortcut in the "Start" menu. Select "Create a desktop icon" to add a desktop shortcut, and click "Next" to continue.

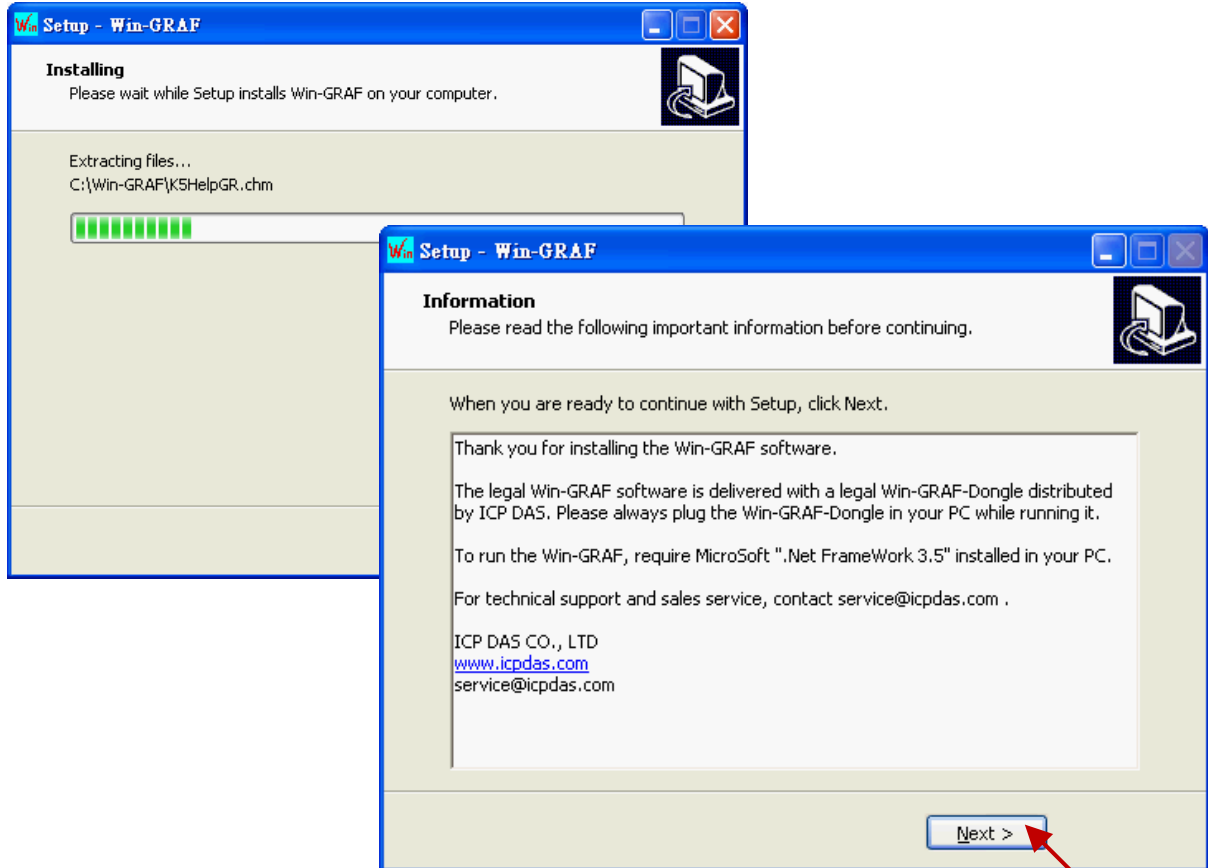


- Click "Install" to start the Win-GRAF Workbench installation.

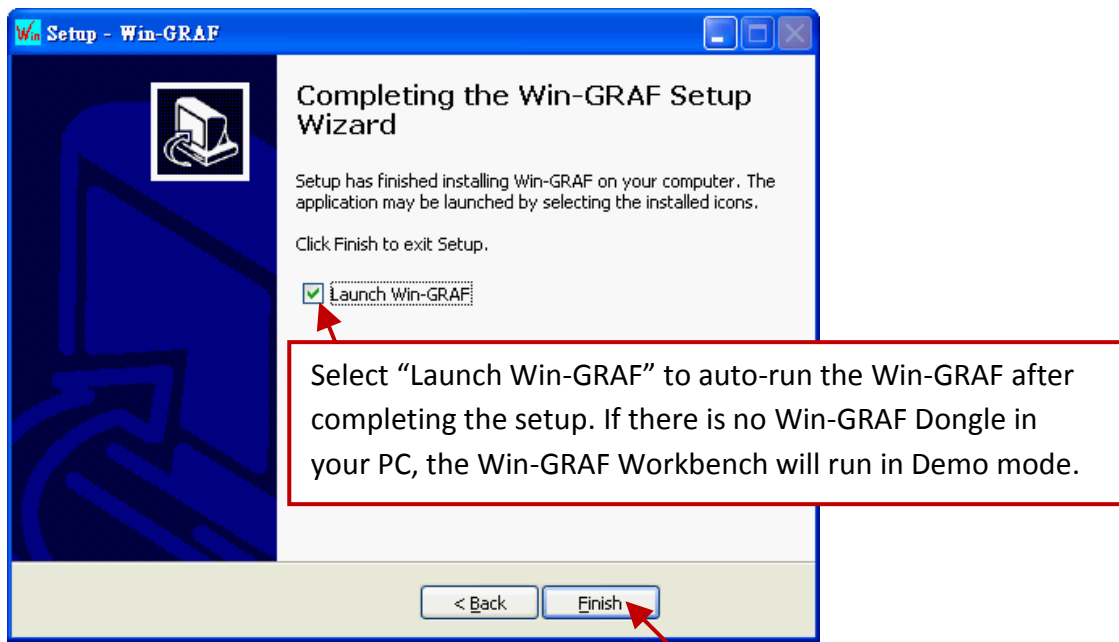


Classification	Win-GRAF English FAQ-001						
Author	Janice Hong	Version	1.0.0	Date	Oct. 2015	Page	4 / 7

7. Before the end of the installation, you will see a pop up window and it displays:
 - a. The legal Win-GRAF Workbench is delivered with a legal Win-GRAF Dongle distributed by ICP DAS. Please always plug the Win-GRAF Dongle in your PC while running it.
 - b. To run the Win-GRAF, require Microsoft “.Net FrameWork 3.5” installed in your PC.



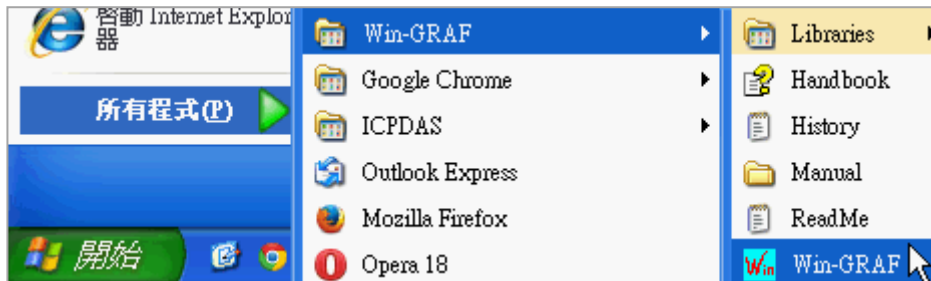
8. By now, you have completed the Win-GRAF installation, then click “Finish” to exit this window.



Classification	Win-GRAF English FAQ-001						
Author	Janice Hong	Version	1.0.0	Date	Oct. 2015	Page	5 / 7

1.2. Run the Win-GRAF Workbench

Before running the Win-GRAF Workbench, make sure the Win-GRAF Dongle is plugged into your PC. Without using a Win-GRAF Dongle, the Win-GRAF Workbench will run in Demo Mode. Open the Windows Start menu, click on “Win-GRAF” folder and then “Win-GRAF” to open this software.



Description of the “Win-GRAF” folder:

Libraries:

For users to create their own function or modify an exist function.

Handbook:

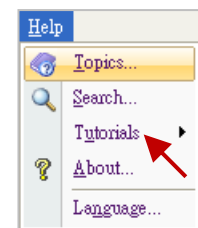
The manual details the software interface, programming environment, programming languages, and so on, provided by COPALP. (Or click the [Help] > [Topics] from the Win-GRAF menu bar)

History:

The modification history and features added of the Win-GRAF Workbench.

Manual:

The ICP DAS Win-GRAF user’s manual. (Or click the [Help] > [Tutorials] from the Win-GRAF menu bar, the manual is located in the path “C:\Win-GRAF\Tutorials”)



ReadMe:

The notice about the Win-GRAF Workbench.

1.2.1. Win-GRAF Operating Mode

The Win-GRAF Workbench provides two operating modes:

“Demo Mode”:

Without using a Win-GRAF Dongle. The compiled Win-GRAF project can run for 15 minutes in the PAC. Once the time limit has expired, users must Stop/Start this project again and it only supports up to 40 I/O tags.

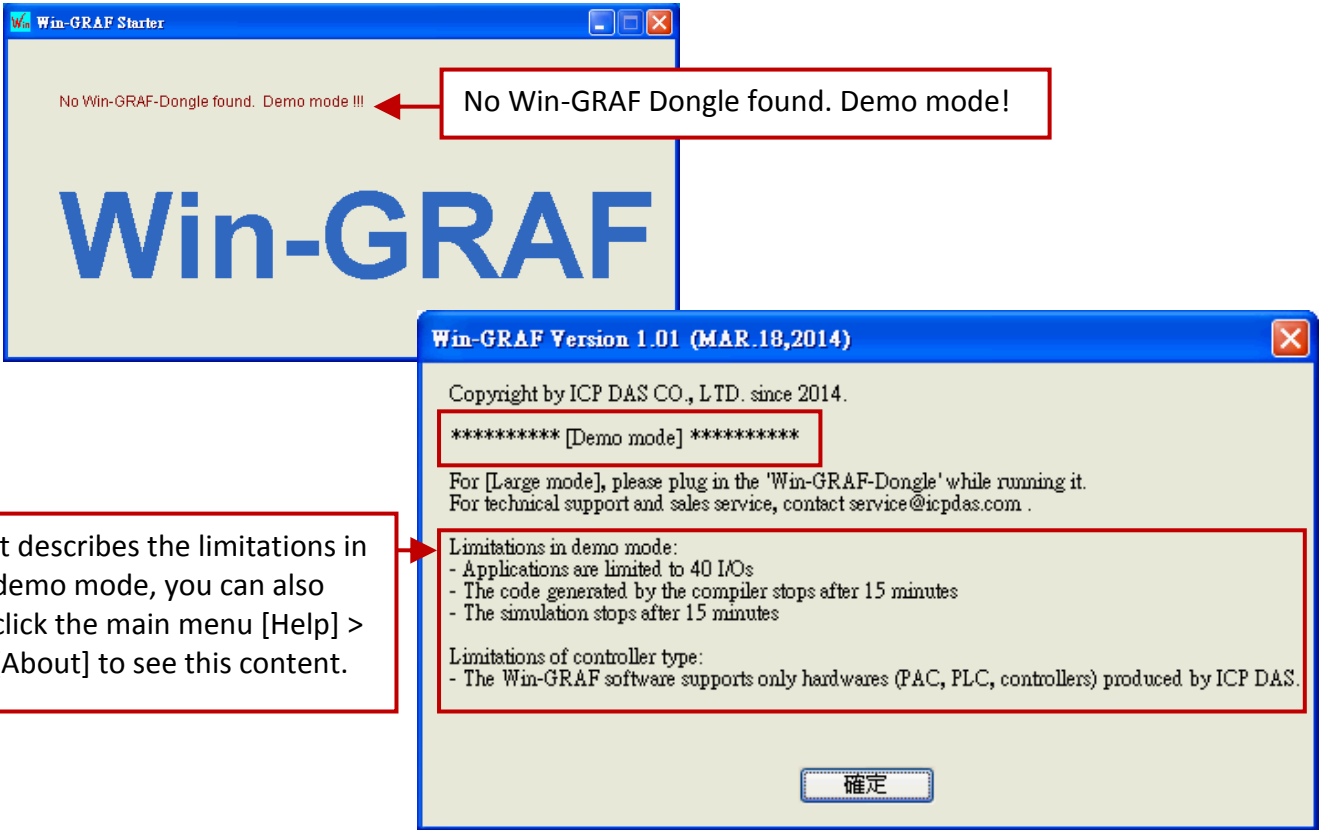
“Large Mode”:

Using a Win-GRAF Dongle. The project can run in the PAC without the time limit.

Classification	Win-GRAF English FAQ-001						
Author	Janice Hong	Version	1.0.0	Date	Oct. 2015	Page	6 / 7

Demo Mode - Without using a Win-GRAF Dongle.

The start screen will show as below after running the Win-GRAF Workbench.



It describes the limitations in demo mode, you can also click the main menu [Help] > [About] to see this content.

Note: If you install the Win-GRAF Dongle in the Demo Mode, you must close Win-GRAF Workbench and then start it again to make it become Large Mode.

Large Mode - Using a Win-GRAF Dongle.

The start screen will show as below after running the Win-GRAF Workbench.

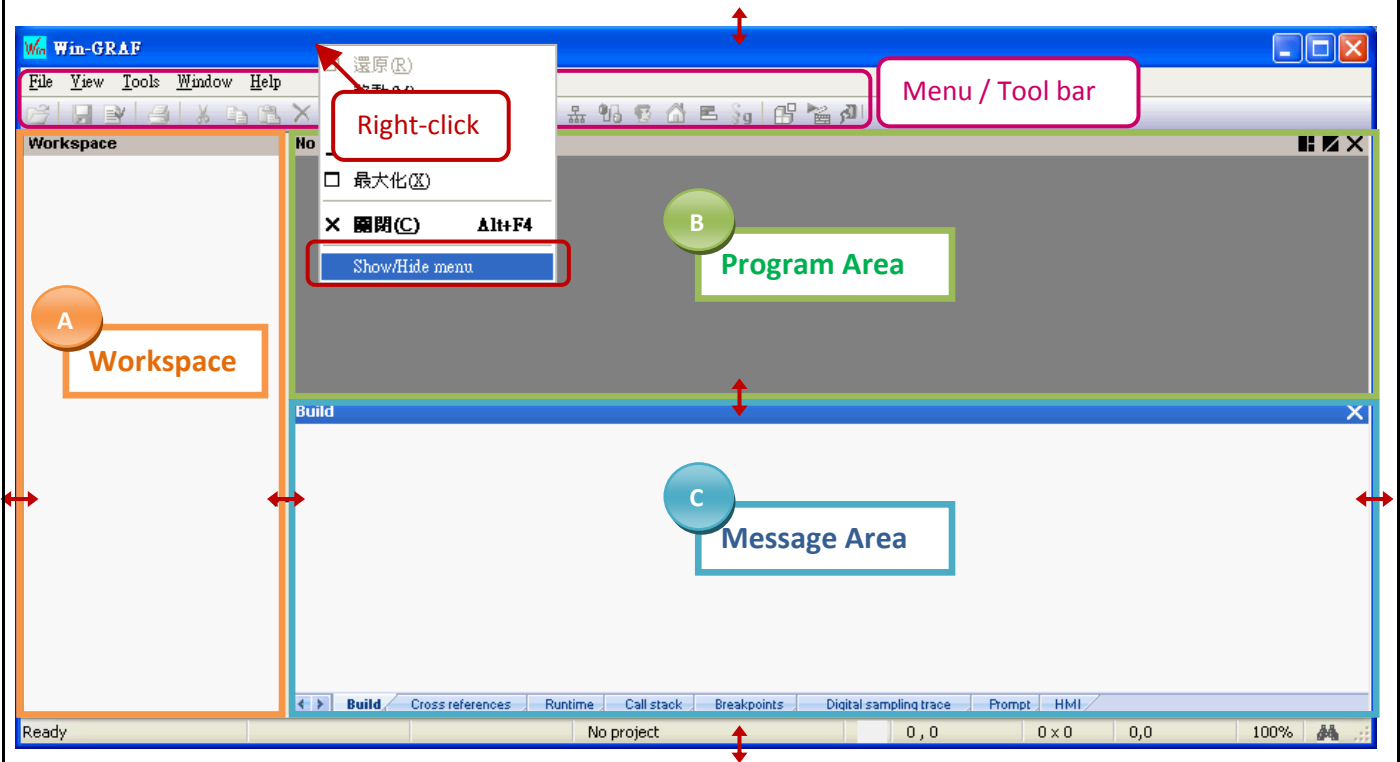


Classification	Win-GRAF English FAQ-001						
Author	Janice Hong	Version	1.0.0	Date	Oct. 2015	Page	7 / 7

1.2.2. Win-GRAF Operating Environment

Run the Win-GRAF Workbench, and then its main screen will be shown as below:

(Note: Mouse right-click on the top of the Window to Show/Hide the menu bar.)



A. The Workspace:

It allows users to create project lists, and add/open the Win-GRAF program as well as the related settings. Moreover, the new project can be created with a project template.

B. The Program Area:

It used to show/edit the program and can be divided into more function area.

(Refer the [Win-GRAF Getting Started Manual](#))

C. The Message Area:

It used to show compiler messages and provides more diagnostic tools.

Tips:

1. To resize a window, click and drag the side or corner of the window to change its size.
2. Press the "F1" key to open the user manual (i.e., HTML Help).