



ICP DAS CO., LTD.

Address: No. 111, Kuangfu N. Rd., Hukou Shiang, Hsinchu, Taiwan 303, R.O.C

Phone: +886-3-5973366 Fax: +886-3-5973733

Information Notice

Products Concerned:

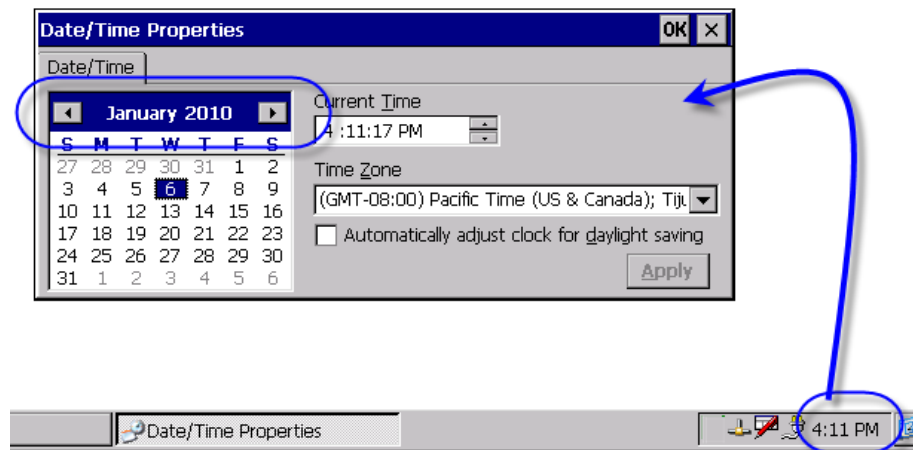
W-8x3x series and W-8x4x series

Problem Description:

The calendar on OS cannot handle dates after year 2010; when the date setting in Date/Time properties is over year 2010, it turns back to year 2000.

How to Confirm the Problem?

Double click on the button-right clock to show the Date/Time properties. If the calendar can be changed to **year 2010, 2050** and after, it means the WinCon's calendar is good.



Products which Need to Update:

- The W-8x3x purchased before 2008/02/21.
- The W-8x4x purchased before 2008/03/13.
- If the WinCon is applied in an application which doesn't care the date/time issue, then you can ignore the update.



ICP DAS CO., LTD.

Address: No. 111, Kuangfu N. Rd., Hukou Shiang, Hsinchu, Taiwan 303, R.O.C

Phone: +886-3-5973366 Fax: +886-3-5973733

Solution:

- For W-8x3x:

Update the OS image as listed below, but no need to change the hardware.

- nk_8x3x_20080221_EN_Cab_V200.bin (English version)
- nk_8x3x_20080221_TC_Cab_V200.bin (Traditional Chinese version)
- nk_8x3x_20080221_SC_Cab_V200.bin (Simplified Chinese version)

Download: http://ftp.icpdas.com/pub/cd/winconcd/napdos/wince/os_image/

- For W-8x4x:

Update the OS image and eBoot, but no need to change the hardware.

OS:

- nk_8x4x_20080701_EN_CAB_V200.bin or nk_8x4x_20080313_EN_CAB_V200.bin or later (for English version)
- nk_8x4x_20080701_TC_CAB_V200.bin or nk_8x4x_20080313_TC_CAB_V200.bin or later (for Traditional Chinese version)
- nk_8x4x_20080701_SC_CAB_V200.bin or nk_8x4x_20080313_SC_CAB_V200.bin or later (for Simplified Chinese version)

Download: http://ftp.icpdas.com/pub/cd/w-8x4x/os_image/

eBoot:

"eboot_8x4x_0921_V100b.nb0"


Download: http://ftp.icpdas.com/pub/cd/w-8x4x/os_image/eboot/

- Note:

The configuration will be lost after OS updated. Please record the configuration before updating the OS and then recover them when the OS update is completed. Following items are what you might need to note

- Ethernet configuration: IP, Mask, Gateway address
- Screen resolution
- Baud Rate of COM2 and COM3 ports
- Com ports configurations of I-8112/8114/8142/8142i/8144 modules
- Other settings in WinCon Utility.

(Ex : Auto run programs list in Auto Execution tag)

	Name	Sign	Date
Test Engineer	Alung Shih	Alung Shih	JAN. 6 th , 2010
Manager	Kevin Ho		JAN. 6 th , 2010



ICP DAS CO., LTD.

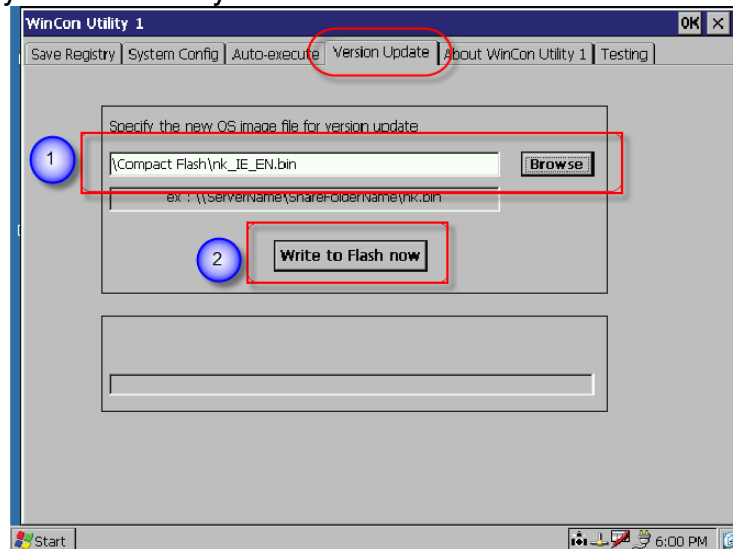
Address: No. 111, Kuangfu N. Rd., Hukou Shiang, Hsinchu, Taiwan 303, R.O.C

Phone: +886-3-5973366 Fax: +886-3-5973733

Appendix A: Update OS image on W-8x3x or W-8x4x

There are two methods to update OS image of W-8x3x and W-8x4x:

1. The recommend method is to copy the OS image into the CF card, and update it by WinCon Utility.



2. The other method is using "EShell" to update the OS via the Ethernet. In a network with a DHCP server, run the "EShell" on the PC and connect to This is useful method while the OS image is damaged and can't boot correctly. To use the method, the network must have support of DHCP. The detail documentation can be obtained from

http://www.icpdas.com/products/PAC/wincon-8000/Download/download_osimages.htm

WinCon-8000 Download Center

OS images WinConSDK WinConUtility Compact Flash User Manual Code Center Library

OS images download

Note:
Before you download the software programs, you should notice if the programs are compatible to your machine. **Please read the notes first in each chapter you want before download programs.**

How to upgrade OS image of Wincon-8000
There are two ways for users to upgrade OS image of WinCON-8000. The simplest method is to use the "version update" function in WinCon Utility 1. But in some abnormal occasion, the system in WinCon-8000 has crashed , then user must use platform builder to upgrade the OS image.
For detail information, please refer to the document as follow:

[How to upgrade OS image with Eshell\(en\)](#)
[How to upgrade OS image with Eshell\(tc\)](#)



ICP DAS CO., LTD.

Address: No. 111, Kuangfu N. Rd., Hukou Shiang, Hsinchu, Taiwan 303, R.O.C

Phone: +886-3-5973366 Fax: +886-3-5973733

Appendix B: Steps to update the eBoot on the W-8x4x

Step1. Copy "EbootUpdate.exe" and "eboot_8x4x_0921_V100b.nb0" to the CF card.

The two files may be found from

http://ftp.icpdas.com/pub/cd/w-8x4x/os_image/eboot/

Step2. Run "EbootUpdate.exe" on W-8x4x, and select "eboot_8x4x_0921_V100b.nb0" in File Browse dialog.

Step3. Press "Update eboot from file" button.

Step4. Wait the "Eboot update success!!" message showed.

(The update progress will take less than 5 seconds.)

