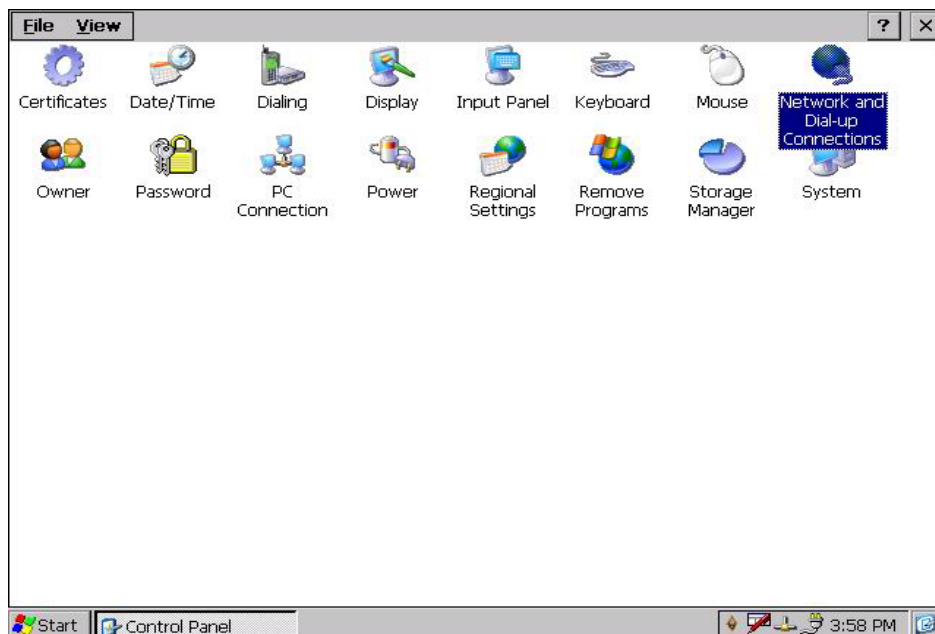
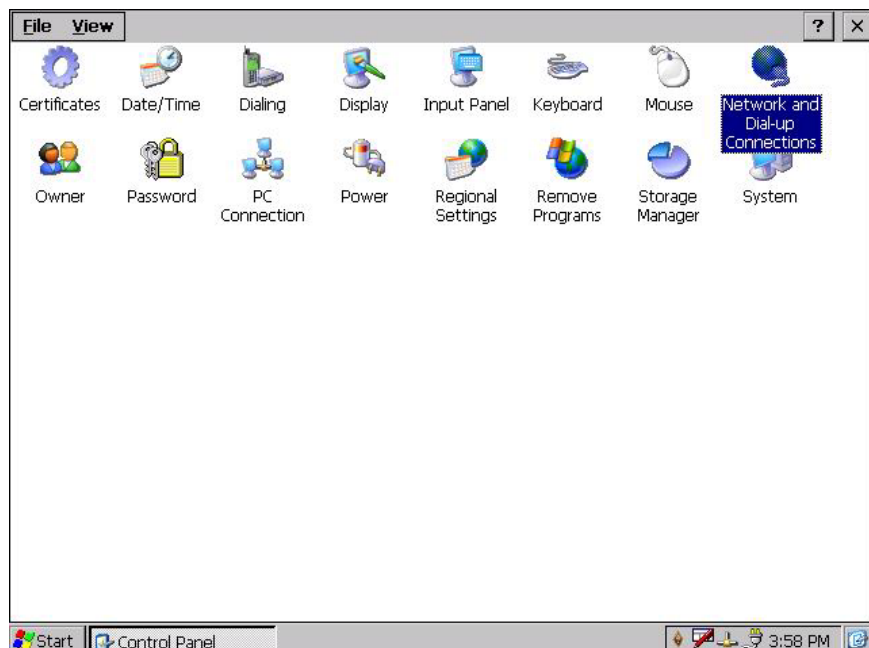


Wincon-8000 PPPoE setting :

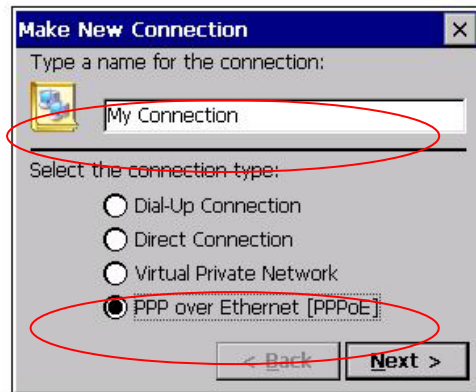
1. PPPoE application : For an ADSL user who adopts floating IP.
2. Hardware requirement: a) ADSL router. (floating IP type)
b) WINCON8000
c) Cable
3. Create a new dial-up or networking connection:
 - 3-1. Select Start -> Setting -> Control Panel->Networking and Dial-Up Connection:



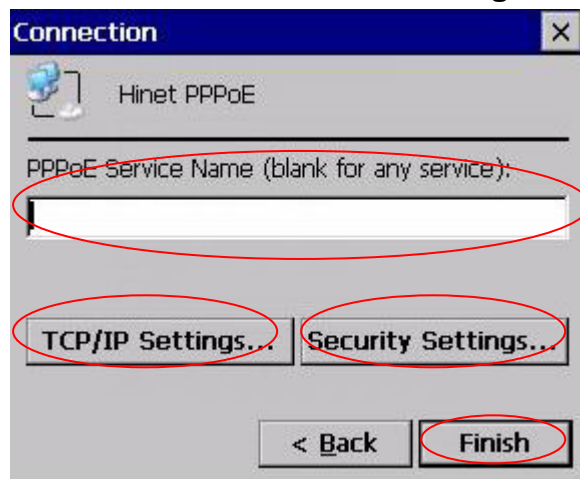
- 3-2. Double clicking "Network and dial-up connection":



**3-3. Select “Make new connection” , then a window will pop-up.
Please fill in the connection name and select connection type
as”PPP over Ethernet[PPPoE]”, then click “Next” button to
continue:**

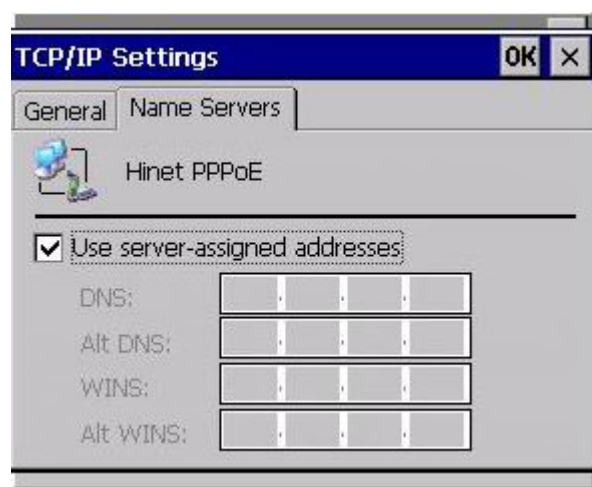
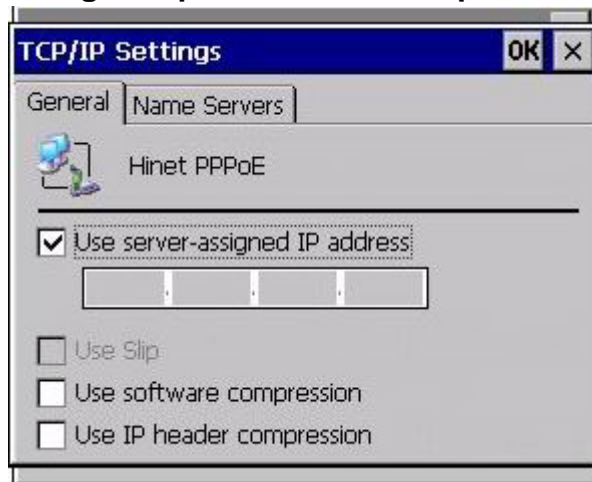


**3-4. Enter the service name(blank for any service) and modify the
setting on “TCP/IP setting” and “Security Setting” ,then press
“Finish” button to finish the PPP setting.**



4. Other settings :

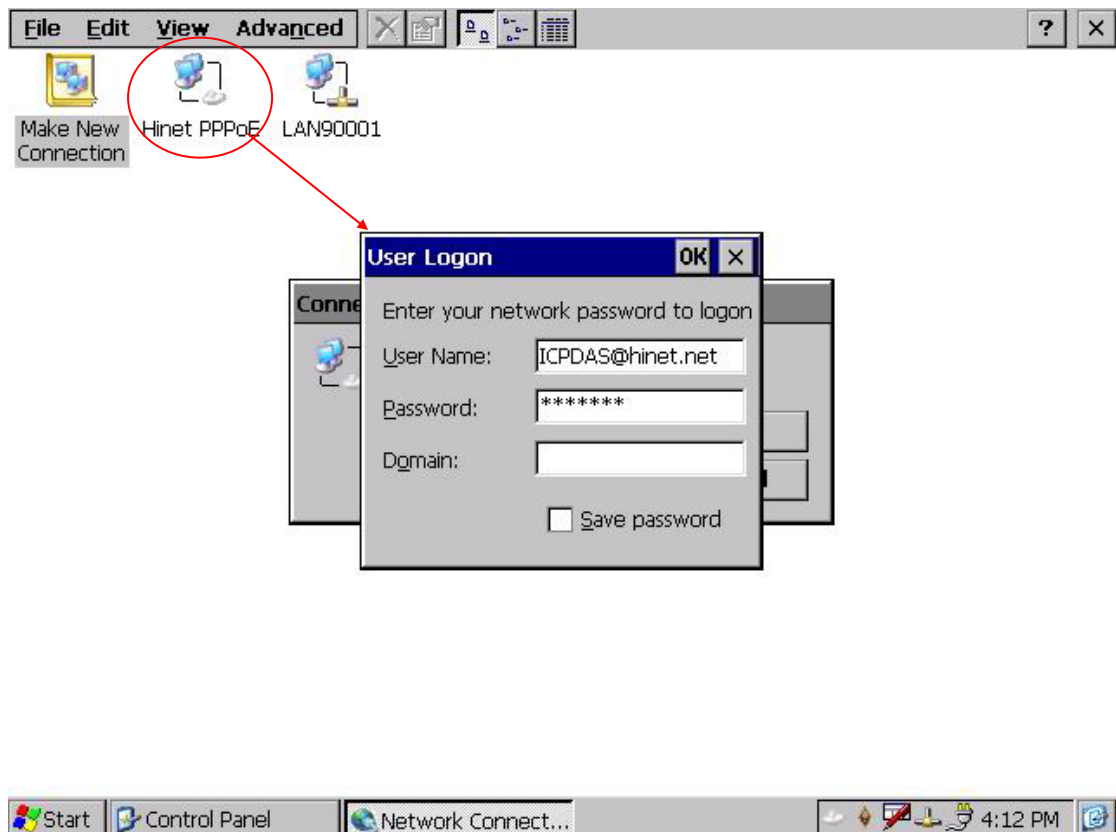
4-1. TCP/IP settings: Dependant on the requirement of each ISP.



4-2. "Security Settings" : Dependant on the requirement of ISP ! (Below picture is the setting for HINET).



5. Build up PPPoE connection : Double clicking the created connection and fill in necessary data in “User Name” and “Password” then press “OK” button !



PS : If you want to keep the “User Name” and “Password”, please check the “Save password” box and use the function of “Save registry” in Wincon Utility to save registry.