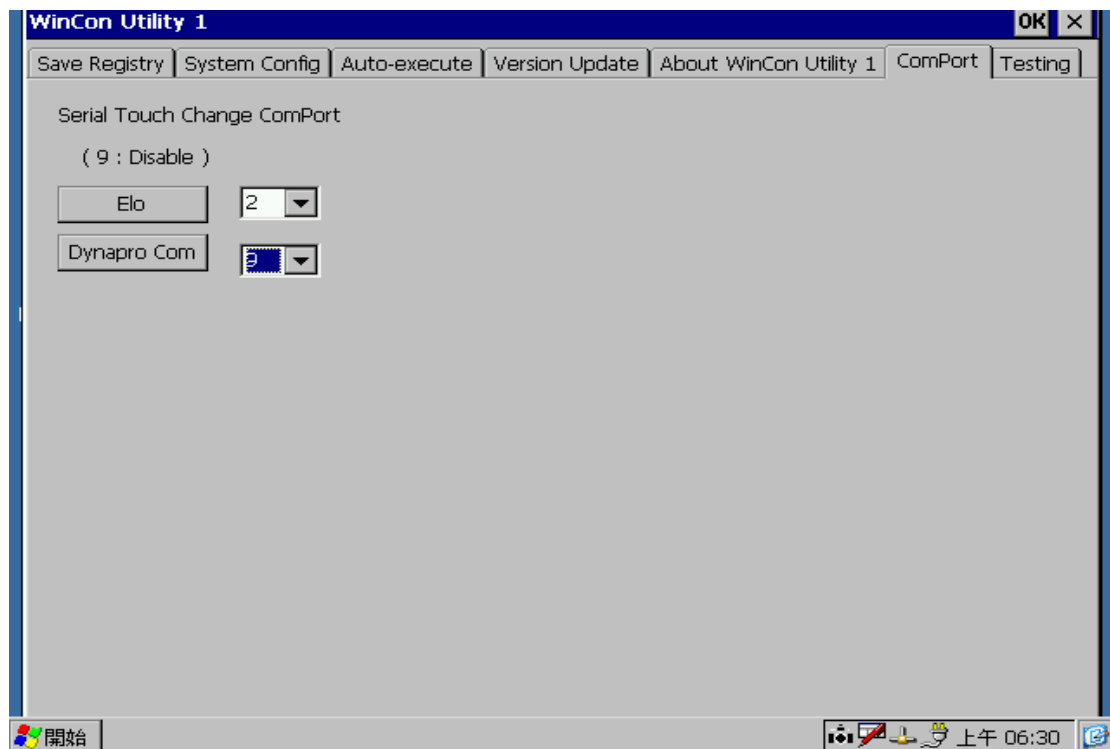


**Prefix:** 2 brand's serial touch panel drivers ( ELO、 DYNA PRO ) are integrated in Wincon-8000. Below are the Serial touch operation guide.

**Limitation:** Basically, the drivers are included in OS image and only one type of serial touch driver can be used at one time. User can assign proper COM port (COM2 ) for serial touch in Wincon utility. If user does not want use serial touch or user want to use COM for other applications ( for ex: ActiveSync), just assign COM9 to that serial touch(Disable touch serial function).

**Explanation:** So far, only COM2 (RS-232) can be used by serial touch . In near future, ICPDAS will add one more RS-232 COM port (COM4) for serial touch and other purposes.

### Serial Touch Panel Setting :



In the above example, user can view Serial Touch registry setting as:

ELO SERIAL TOUCH REGISTRY :

HKEY\_LOCAL\_MACHINE\HARDWARE\DEVICEMAP\TOUCH

"ComPort"="COM2:"

Dyna Pro SERIAL TOUCH REGISTRY :

HKEY\_LOCAL\_MACHINE\Drivers\BuiltIn\Dmc9x00\_COMX

"Order"=dword:9 ;; The Value default is 1

"Port"=dword:9 ;; 1 is mean "COM1", 2 is "COM2".