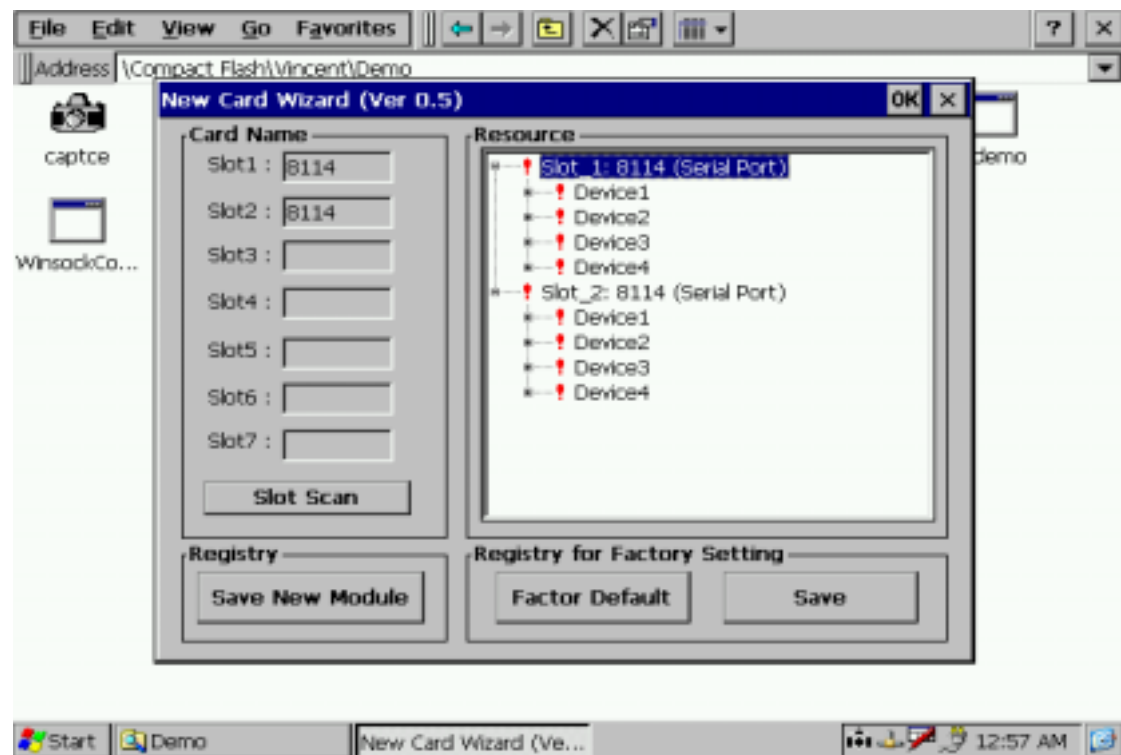
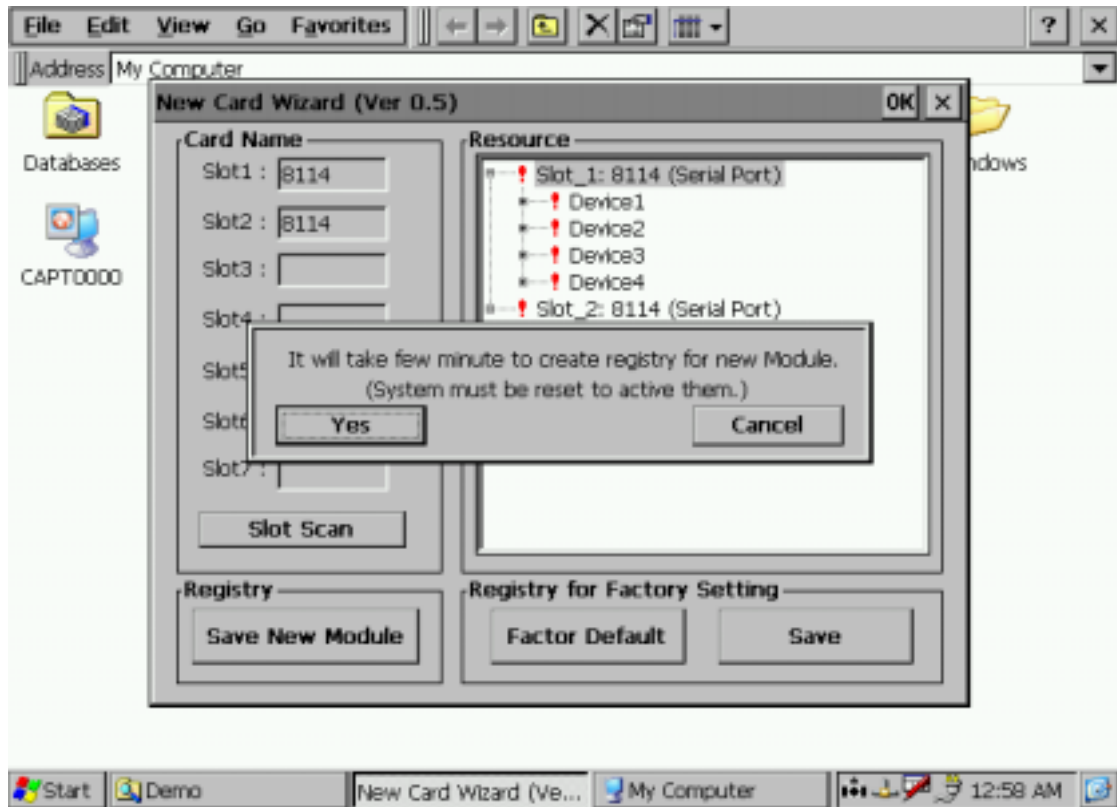


## How to use New Card Wizard?(for serial communication modules)

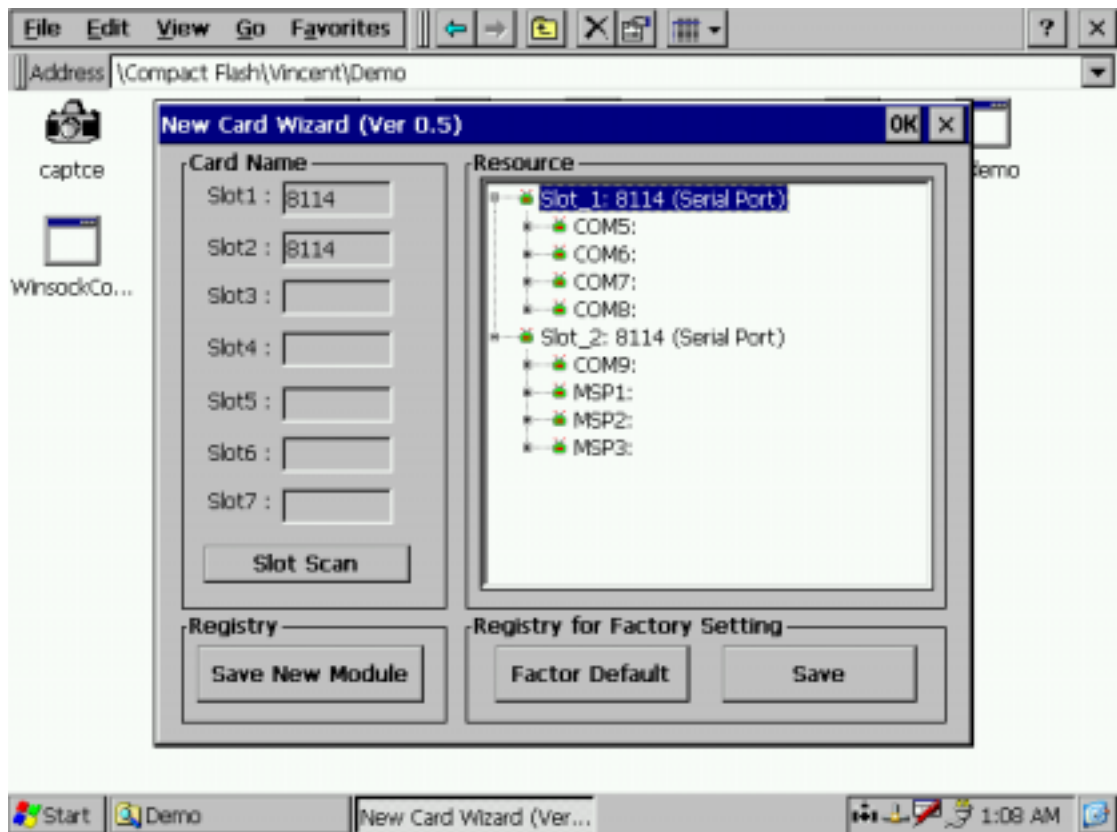
Topic: When you add ICPDAS serial communication (I-8112, I-8114, I-8142, I-8144) modules or change the slot position of serial communication modules, please run new card wizard to setup, otherwise Wincon-8000 may not recognize these serial communication modules correctly. After executing this wizard, Wincon will save the configuration of serial communication modules in Wincon's registry. Users don't need to repeat these steps while recycle power of Wincon.

1. RUN "New Card Wizard.exe" -> [SLOT Scan] -> [Save New Module] -> Yes -> Reboot





2. RESTART -> RUN "New Card Wizard.exe" -> [Slot Scan] -> "Resource" (Show Com Port Setting)



Q: How to use 8114 com port?

A: Same com2 or com3.

**NOTE:**

1. The maximum extend com ports are 10 for WINCON-8000. (8114 \* 2 and 8112 \* 1) or (8112 \* 5)

Limitation

To run this wizard correctly, please make sure :

- Bootloader Version should be RES6 or later version.
- OS image should be upgraded to version released at Sep/02/2004 or later