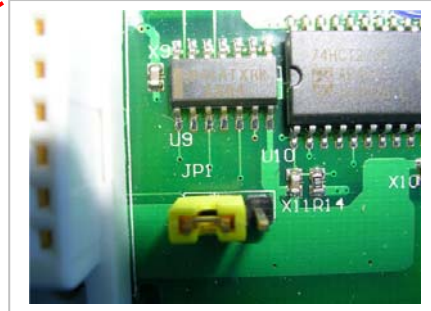
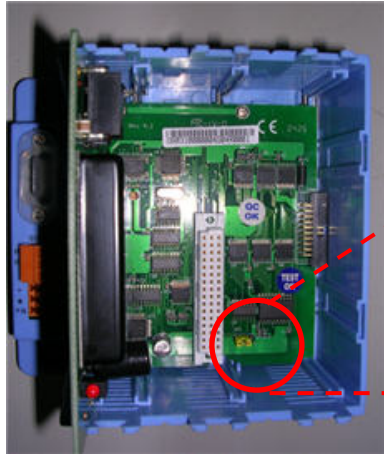


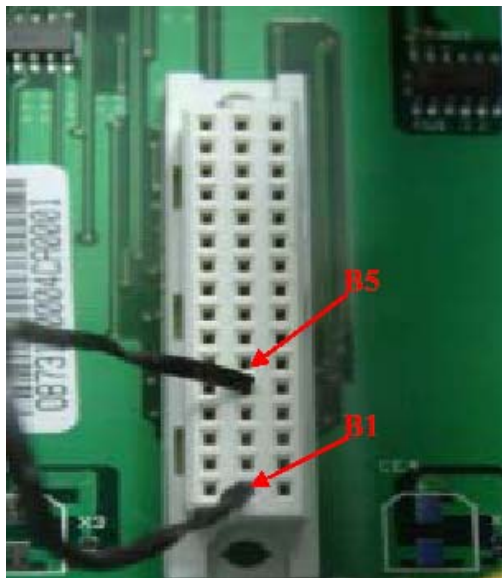
How to download WinCon OS image with Eshell?

---- when the Wincon can not boot up

1. Set the WinCon boot at “boot me” state.

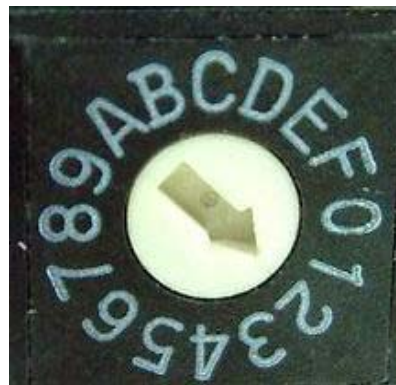


For **W-803x** (0-slot backplane) : set the jumper of JP1 to left side.



For **W-873x** (7-slot backplane):
short B1-B5 on I/O connector of
one of the 7 slots.


For **W-8x4x**:
rotate rotary SW to No.2 position.



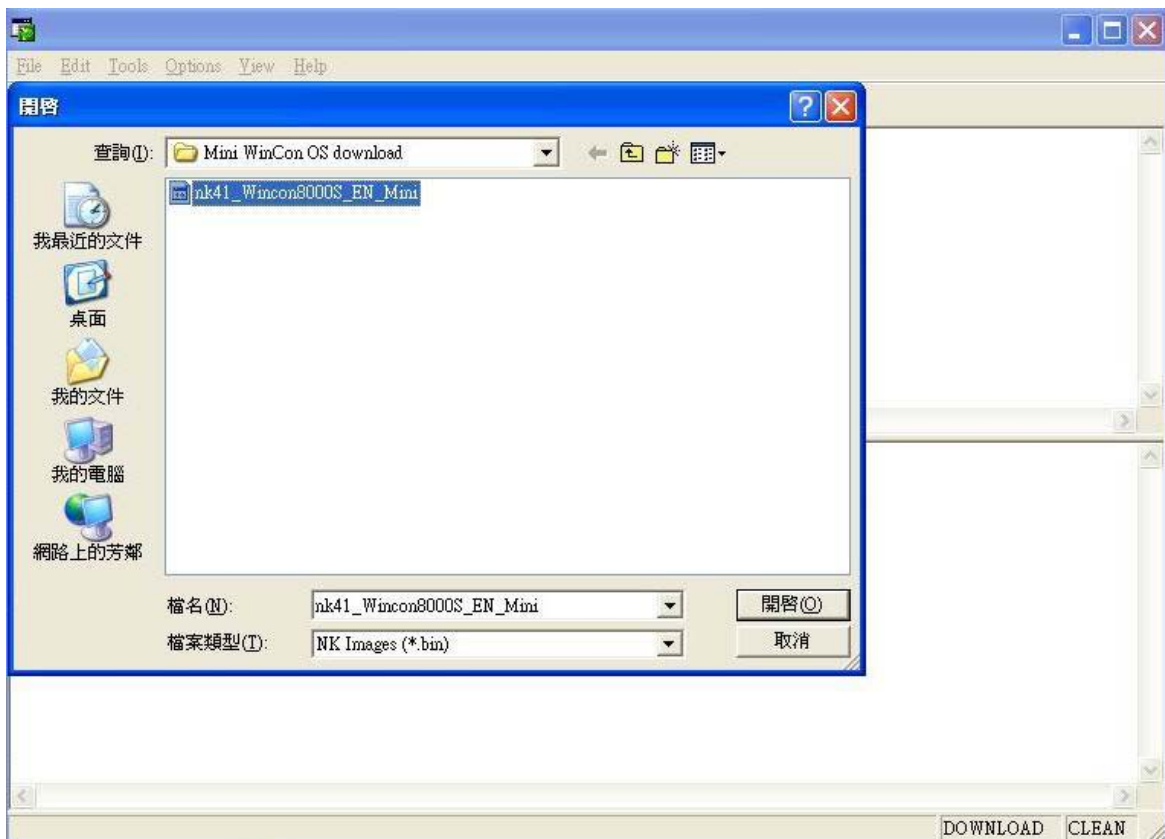
2. Connect LAN port of W-8x3x or LAN1 port of W-8x4x to the Ethernet network, and your PC need link on the network, too.
3. (**Not necessary**) Connect the debug port to COM port of PC. Set the PC COM port configuration as baudrate = 38400 bps data = 8,N,1, flow control = None. (refer to Appendix A)

* **W-833x** (3-slot backplane) can not use to download OS with Eshell.

4. Power-on WinCon.
5. Run Eshell.exe * on PC

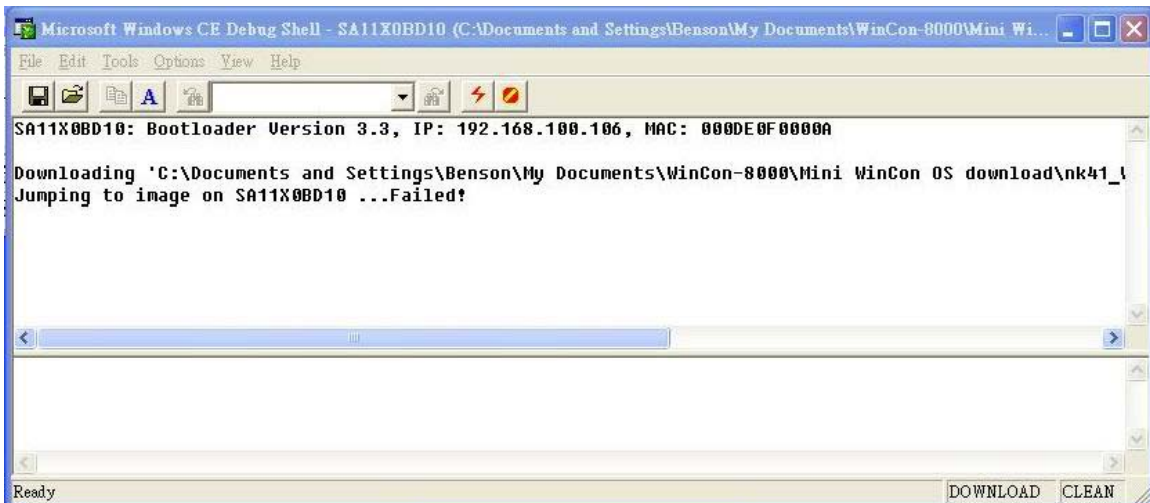
	<p>Eshell will find the device(s) at “boot me” state on the Ethernet network. *</p> <p>(Ex: SA11X0BD153)</p>
---	--

6. Choose your device, click “OK” button
7. Select OS image. (Ex: nk41_Wincon8000S_EN_Mini.bin)



-
- * Eshell.exe : version 1.0.0.1, size : 192,512 bytes, modified at 20031223. It is used to update the OS image when WinCon cannot boot. (ex: after update a wrong OS image)
 - * The “ boot me ” state is only valid in 90 sec. from the WinCon power on. If Eshell does not find the WinCon, please reboot the WinCon.

8. Wait OS downloading process complete. For W-8x3x, the process needs waiting about 35 min; for W-8x4x, it needs about 8 min.
(Please ignore the error message “Jumping to image on SA11XXXXX...Failed”)



If you have connected the debug port of WinCon, please wait the “Flash download successful!” returned from COM port.

```
Verifying ...Done
Block 44/54 Programing ..... Done!
Verifying ...Done
Block 45/54 Programing ..... Done!
Verifying ...Done
Block 46/54 Programing ..... Done!
Verifying ...Done
Block 47/54 Programing ..... Done!
Verifying ...Done
Block 48/54 Programing ..... Done!
Verifying ...Done
Block 49/54 Programing ..... Done!
Verifying ...Done
Block 50/54 Programing ..... Done!
Verifying ...Done
Block 51/54 Programing ..... Done!
Verifying ...Done
Block 52/54 Programing ..... Done!
Verifying ...Done
Block 53/54 Programing ..... Done!
Verifying ...Done
Block 54/54 Programing ..... Done!
Verifying ...Done
Flash Download successful !!
```

9. Power-off the WinCon, remove the “boot me” set * and then reboot the WinCon.

* remove “boot me” set

for W-803x : set the jumper of JP1 to right side.

for W-873x : remove the wire connected B1 and B5 pins



for W-8x4x : rotate rotary SW back to position No.0

Appendix A: the debug port:

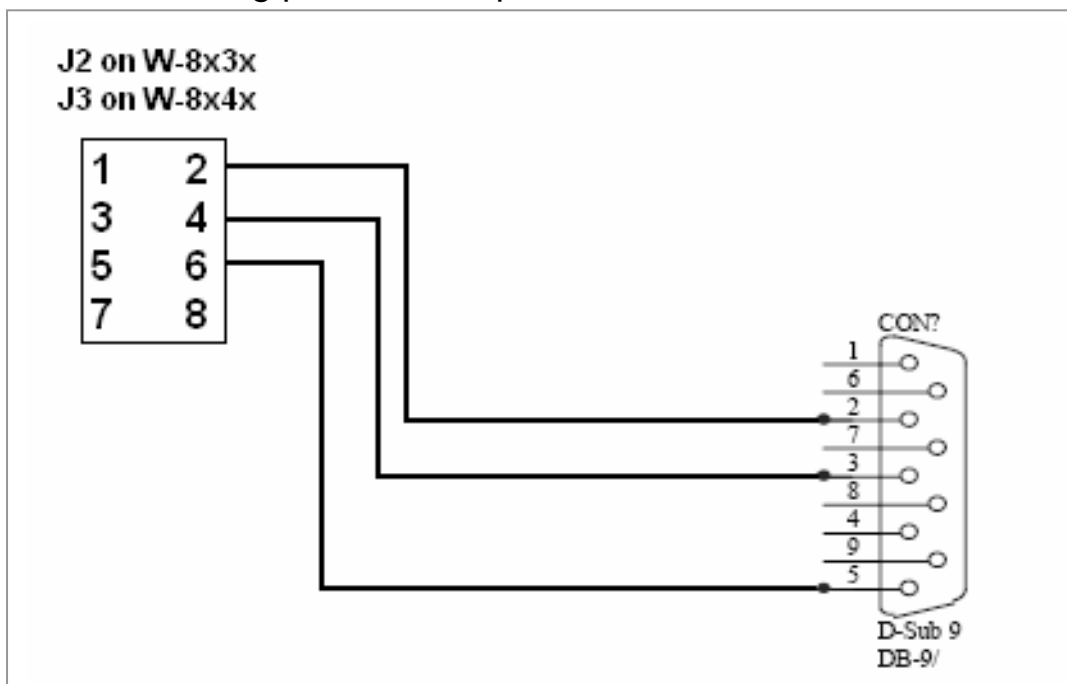
The debug port of WinCon is for monitor the boot status or the status of downloading OS from Ethernet. It is not necessary when downloading the OS from Ethernet.

The debug port configuration: baudrate = 38400 bps, data = 8,N,1, flow control = none.

The debug port position:

																	
<p>W-8x4x : J3 Pin assignment</p>	<p>W-8x3x : J2 Pin assignment</p>																
<table border="1"> <tbody> <tr><td>1</td><td>2</td></tr> <tr><td>3</td><td>4</td></tr> <tr><td>5</td><td>6</td></tr> <tr><td>7</td><td>8</td></tr> </tbody> </table>	1	2	3	4	5	6	7	8	<table border="1"> <tbody> <tr><td>2</td><td>4</td><td>6</td><td>8</td></tr> <tr><td>1</td><td>3</td><td>5</td><td>7</td></tr> </tbody> </table>	2	4	6	8	1	3	5	7
1	2																
3	4																
5	6																
7	8																
2	4	6	8														
1	3	5	7														

The wire of debug port to COM port of PC



Appendix B: delete the Eshell in registry:

1. Run >> “regedit”
2. Move to “\ HKEY_CURRENT_USER \ Software \ Microsoft \ EShell ”
3. Delete the Eshell item and all the content

