

ICP DAS

WF-2571 FAQ

FAQ Version 1.0

ICP DAS Co., Ltd.

2014-12-23

Table of Contents

Q1: WF-2571 doesn't work at Ad-Hoc mode. What should I do?	3
Q2: WF-2571 doesn't work at AP mode. What should I do?	4
Q3: How to get the MAC address of Ethernet device with "Get MAC Address" button?	5
Q4: When I boot WF-2571, the Link LED does not light on. Why?	7

Q1: WF-2571 doesn't work at Ad-Hoc mode. What should I do?

A1: Please follow these steps to check the Ad-Hoc mode configurations.

Step 1. Connect WF-2571 with USB cable.

Step 2. Open WF-2571 Utility and select the USB device "WF-2571".

Step 3. Click "Read para" to read the configurations of WF-2571.

Step 4. Please check the Ad-Hoc settings of WF-2571 :

Wi-Fi Connection Mode	Ad-Hoc : Use Ad-Hoc connectivity with another WF-2571 to create an Ad-Hoc wireless network.
SSID	Service set Identifier : Connected devices must be with the same SSID, SSID length must not exceed 20 characters.
WLCH	1~13 : Wi-Fi transmission channel setting. When WF-2571 is configured to operate in Ad-Hoc mode, this parameter must be given a value between 1 and 13 that defines the channel to be used for beacon transmission. When WF-2571 joins an already existing Ad-Hoc network, it adopts that network's channel.
Encryption	NONE/WEP64/WEP128 : Wi-Fi Encryption of Wi-Fi, connected devices must with the same encryption. Not Support WPA 、WPA2 encryption in Ad-Hoc mode.
WLK	Key of Encryption, connected devices must with the same Key. WEP64 : Key length must be 10 characters. WEP128 : Key length must be 26 characters.

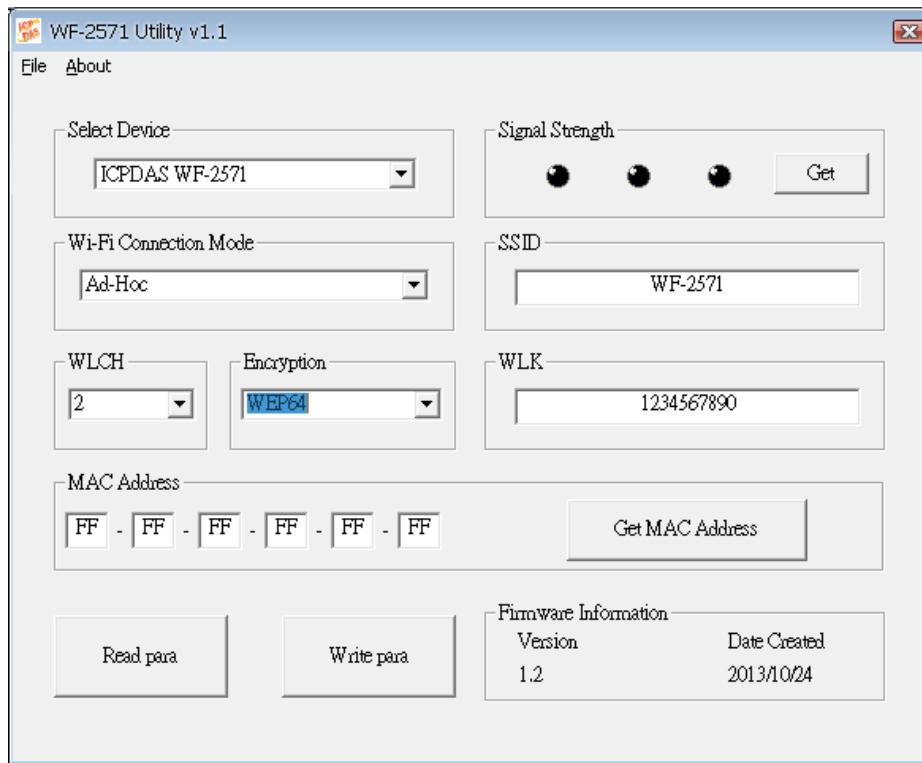


Figure1. Ad-Hoc Settings example of WF-2571

Step 5. Click “Write para” to complete the configurations.

Step 6. Set the same configurations on the other WF-2571.

Please check the signal strength LED or the Wi-Fi connection list (you can find the SSID of WF-2571 on the list) after setting WF-2571. If it still doesn't work, connect an antenna or amplifier and try again.

Q2: WF-2571 doesn't work at AP mode. What should I do?

A2: Please follow these steps to check the AP mode configurations.

Step 1. Connect WF-2571 with USB cable.

Step 2. Open WF-2571 Utility and select the USB device “WF-2571”.

Step 3. Click “Read para” to read the configurations of WF-2571.

Step 4. Please check the AP settings of WF-2571 :

Wi-Fi Connection Mode	AP : Use the wireless access point way for connection and transmission. (Must have Wi-Fi AP)
SSID	Service set Identifier : Connected devices must be with the same SSID, SSID length must not exceed 20 characters.
WLCH	1~13 : Wi-Fi transmission channel setting. When WF-2571 is configured to operate in AP mode, the default value of WLCH is 0.
Encryption	NONE / WEP64 / WEP128 / WPA-PSK(TKIP) / WPA2-PSK(AES) : Encryption of WiFi, connected devices must with the same encryption.
WLK	Key of Encryption, connected devices must with the same Key.

WEP64 : Key length must be 10 characters.
 WEP128 : Key length must be 26 characters.
 WPA-PSK(TKIP) : Key length must be between 8~63 characters.
 WPA-PSK(AES) : Key length must be between 8~63 characters.

TP-LINK AP Settings

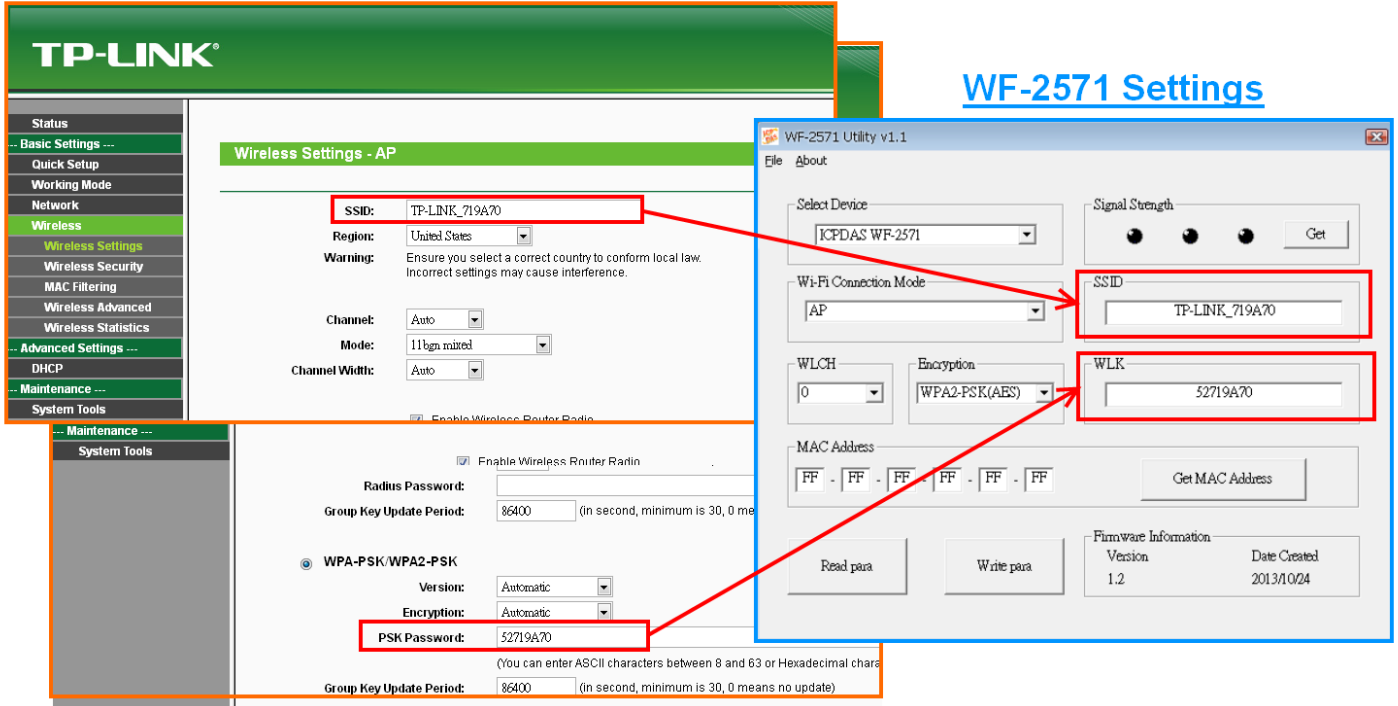


Figure 2. AP Settings example of WF-2571

Step 5. Click “Write para” to complete the configurations.

Please check the signal strength LED after setting WF-2571.

- If it doesn't work and the link Led does not light on, please refer to the Q4.
- If the Wi-Fi connection is not stable, please connect an antenna or amplifier.
- The signal strength is good enough, but the Wi-Fi connection is still unstable. Please check the security type of Wi-Fi AP. The WPA1/WPA2 Mixed mode may cause the problem. You can disable the security type of Wi-Fi AP and set the “Encryption” of WF-2571 to “NONE”.

Q3: How to get the MAC address of Ethernet device with “Get MAC Address” button?

A3: If you want to get the MAC address with “Get MAC address” button, you must check the connection between Ethernet device and PC first.

Step 1. Make a connection between PC and Ethernet device directly.

Step 2. Check the connection with Ping Command on PC side.

Q4: When I boot WF-2571, the Link LED does not light on. Why?

A4: The WF-2571 sends ARP request to the Ethernet device periodically. If the Ethernet device does not reply the ARP message, the Link LED is turned off and the connection is failed. There are two ways to solve the problem.

(1) To set the MAC address of Ethernet Device on WF-2571.

Step1. Connect USB cable to the WF-2571.

Step2. Open WF-2571 Utility and click “read parameters”.

Step3. Fill out the MAC address of Ethernet device. (Q3)

Step4. Click “write parameters”.

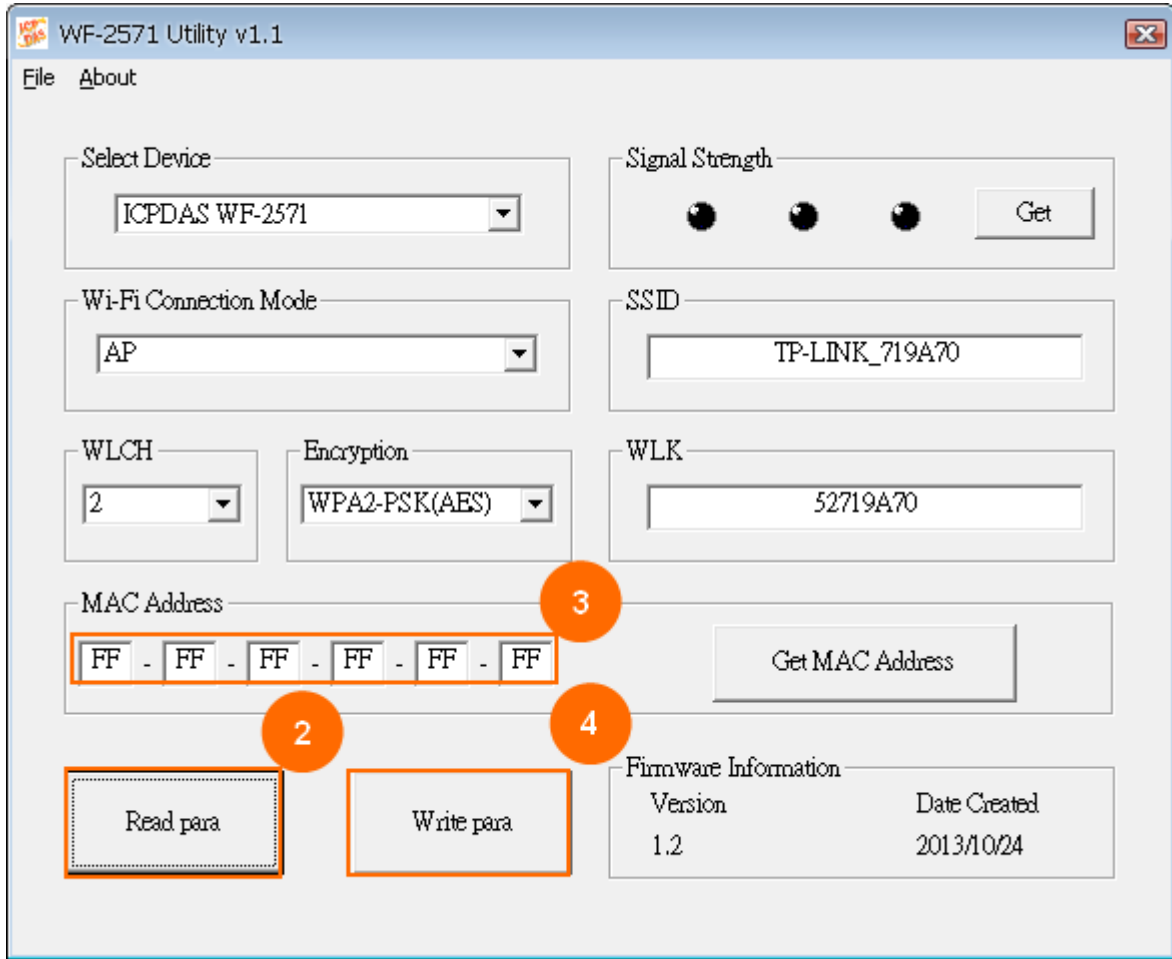


Figure 7. MAC address setting

When the process is done, the Ethernet Device is connected by the MAC address that you set on the WF-2571.

(2) The ARP message is usually sent by the following case:

- Reboot the Ethernet Device.
- Reconnect the Ethernet connector.

Please keep the WF-2571 running and try the 1st and 2nd case.