






LRA-900-E Quick Start

v1.0, Sep. 2018

What's in the box?

In addition to this guide, the package includes the following items:

		
LRA-900-E x 1	ANT-109-01 x 1	Screw Driver x 1

Related Information

- **Product Page:**

http://www.icpdas.com/root/product/solutions/industrial_wireless_communication/wireless_solutions/lra-900-e.html

- **Document:**

http://ftp.icpdas.com/pub/cd/usbcd/napdos/rf_modem/document/lra-900-e

- **Firmware:**

http://ftp.icpdas.com/pub/cd/usbcd/napdos/rf_modem/firmware/lra-900-e

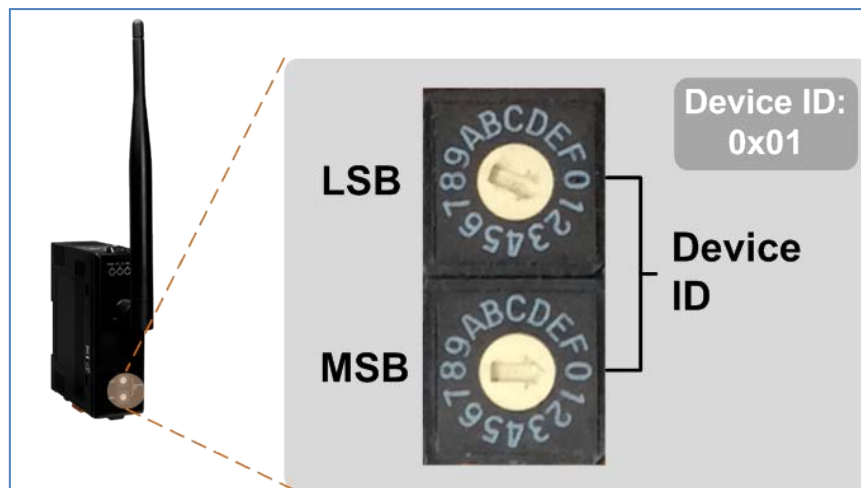
1 Connecting the Power and Host PC

1. Make sure your PC has workable network settings.

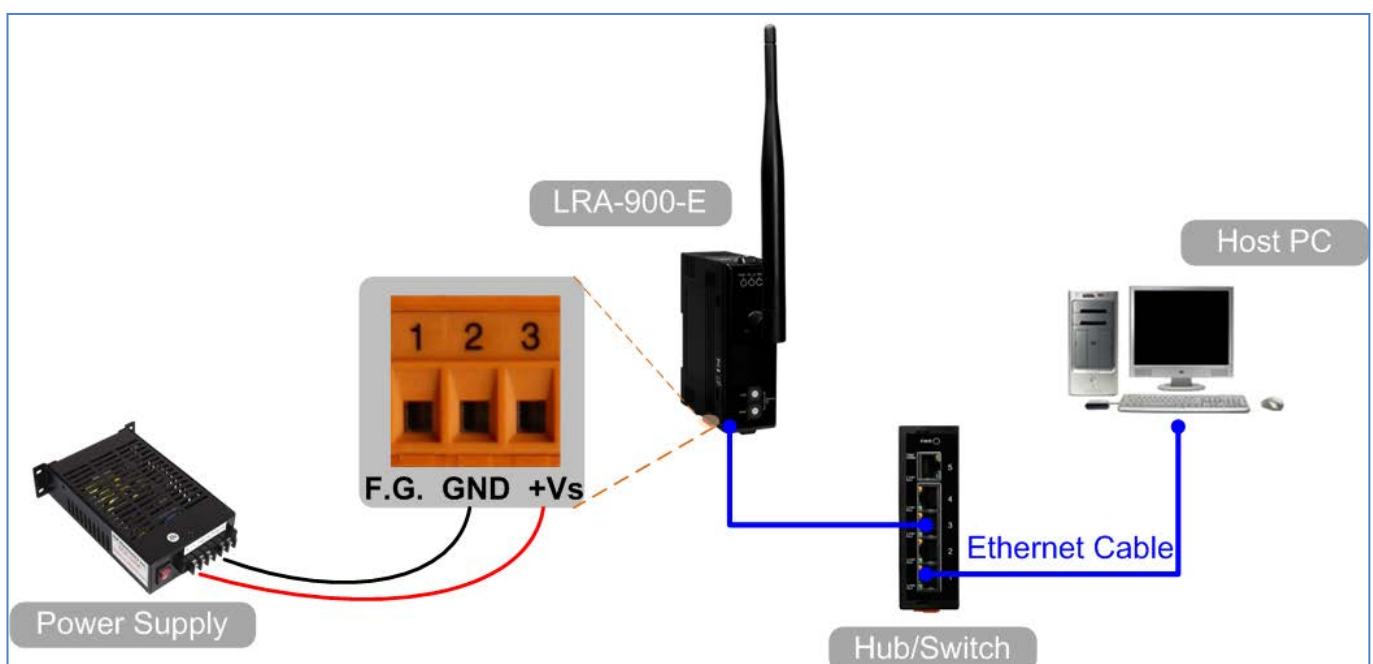
Disable or well configure your Windows firewall and Anti-Virus firewall first, else the “**Search Servers**” on **Chapter 4** may not work. (Please contact with your system Administrator)

2. Connect both the LRA-900-E and your PC to the same sub network or the same Ethernet switch.

3. Check that the Init/Run switch is in the “Run” position and set the “Device ID” switch to necessary position.



4. Supply power (+10~+30 V_{DC}) to the LRA-900-E.



2 Installing Software on Your PC

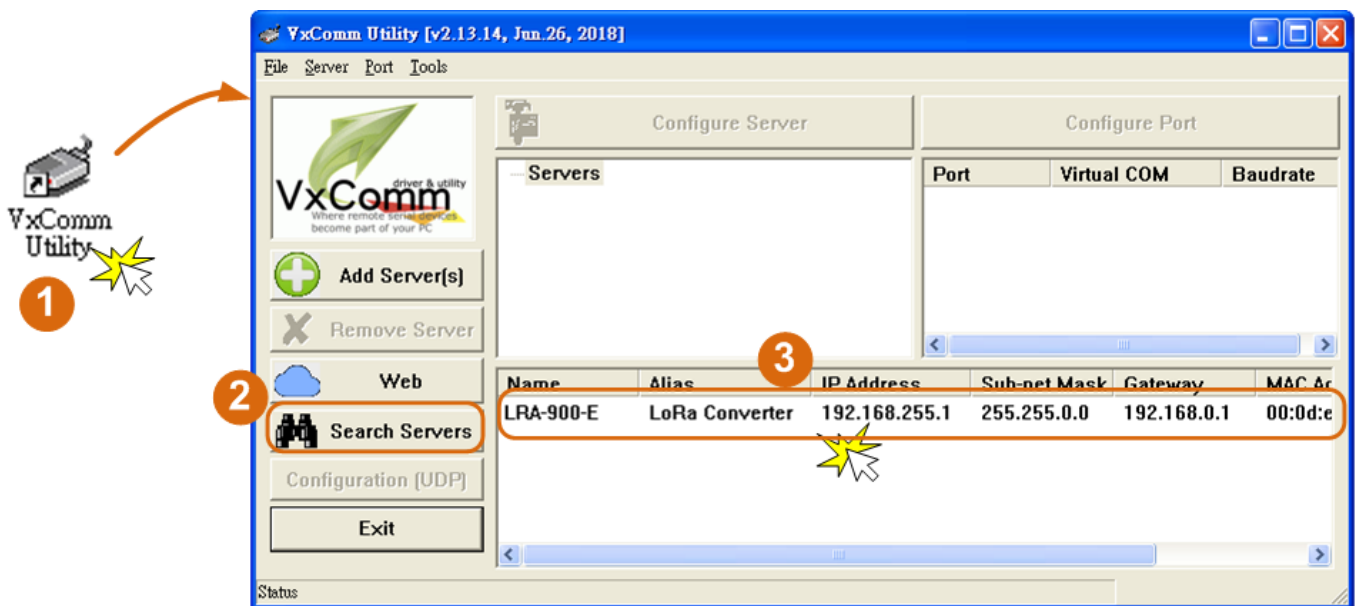
Install VxComm Utility, which can be obtained from the web site:



http://ftp.icpdas.com/pub/cd/8000cd/napdos/driver/vxcomm_driver/windows/

3 Configuring Network Settings

1. Double-click the VxComm Utility shortcut on the desktop.
2. Click the “**Search Servers**” to search your LRA-900-E.
3. Double-click the name of LRA-900-E to open the “**Configure Server (UDP)**” dialog box.

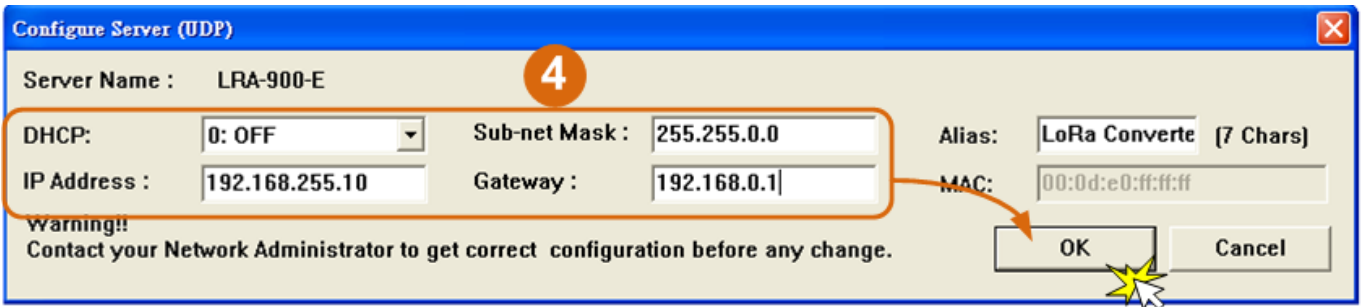


Factory Default Settings of LRA-900-E:

IP Address	192.168.255.1
Subnet Mask	255.255.0.0
Gateway	192.168.0.1

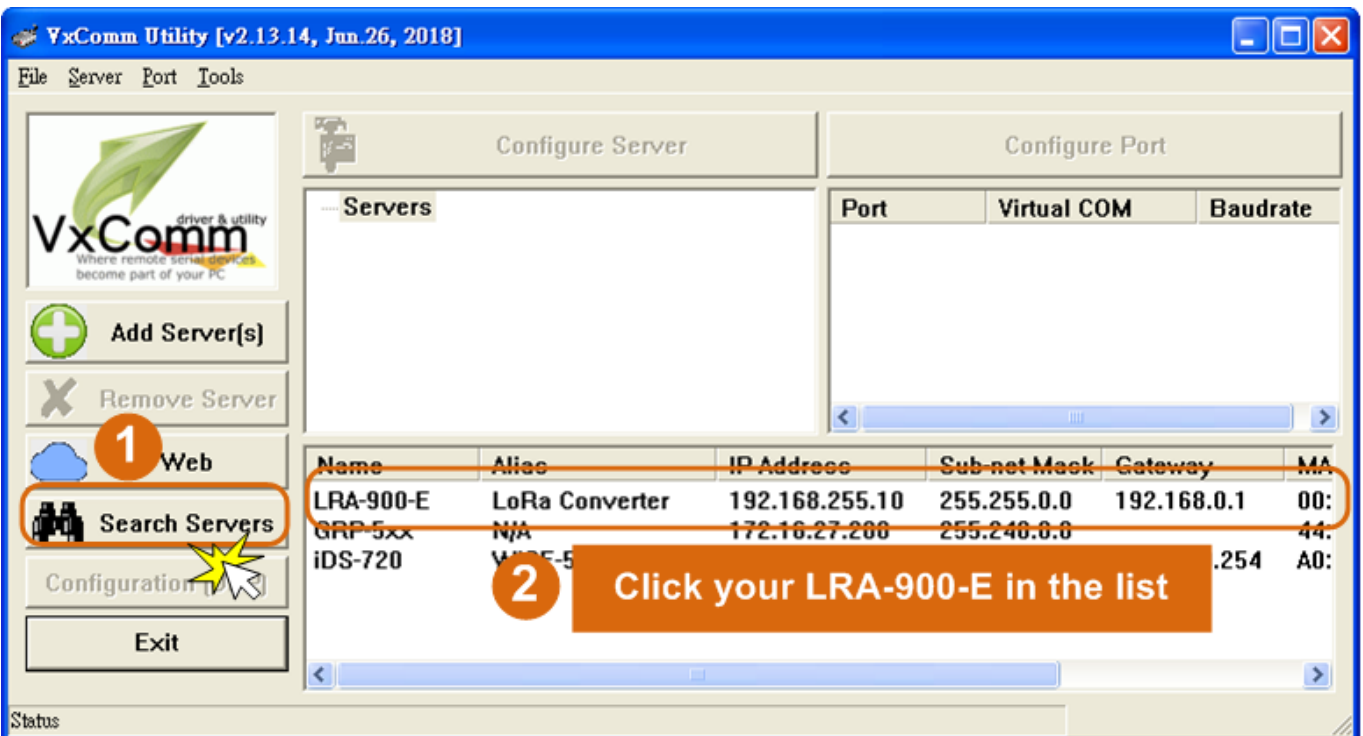
4. Contact your Network Administrator to obtain a correct network configuration (such as **IP/Mask/Gateway**). Enter the network settings and click “**OK**”.

Note: The LRA-900-E will use the new settings 2 seconds later.

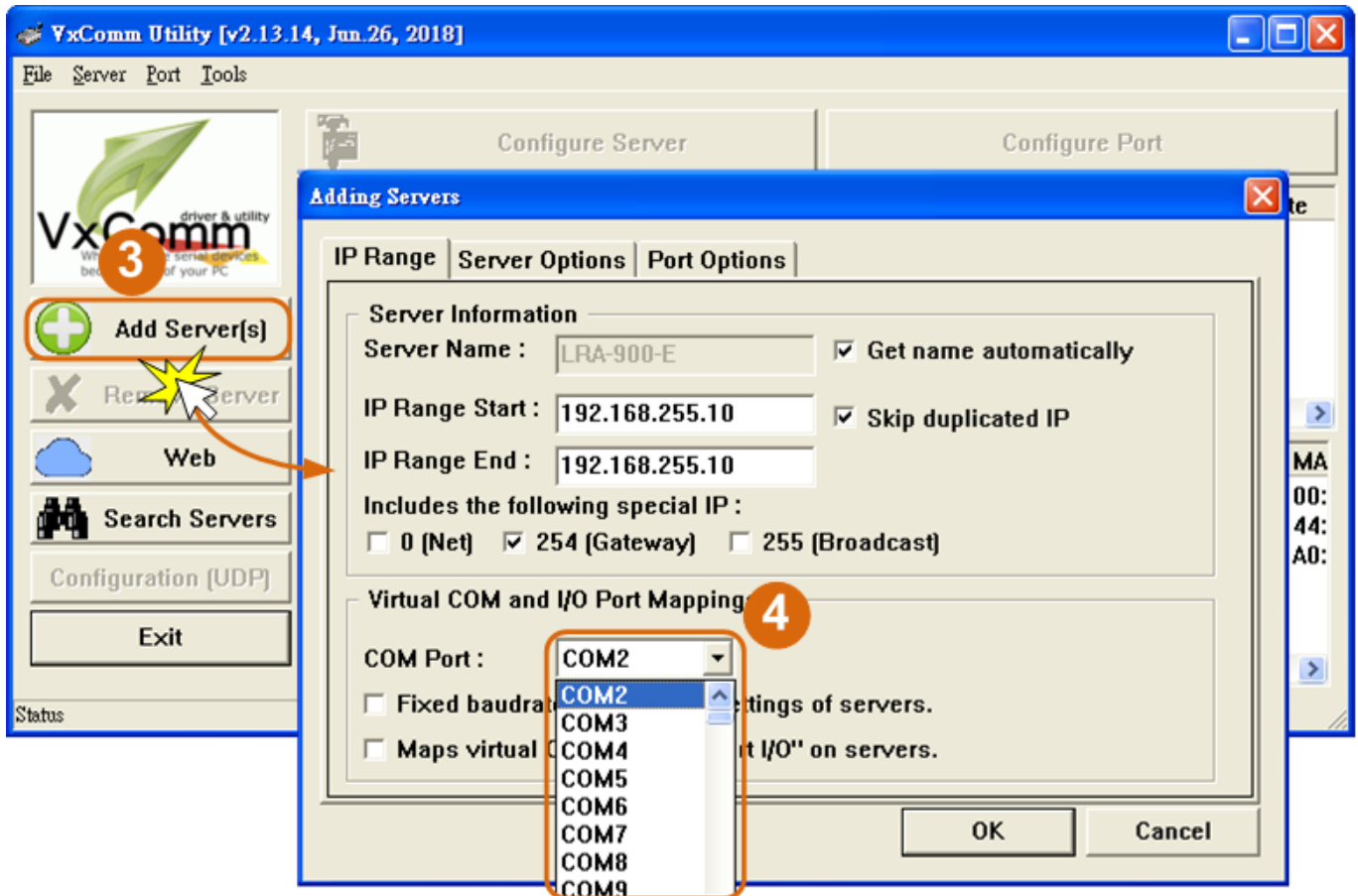


4 Configuring Virtual COM Port

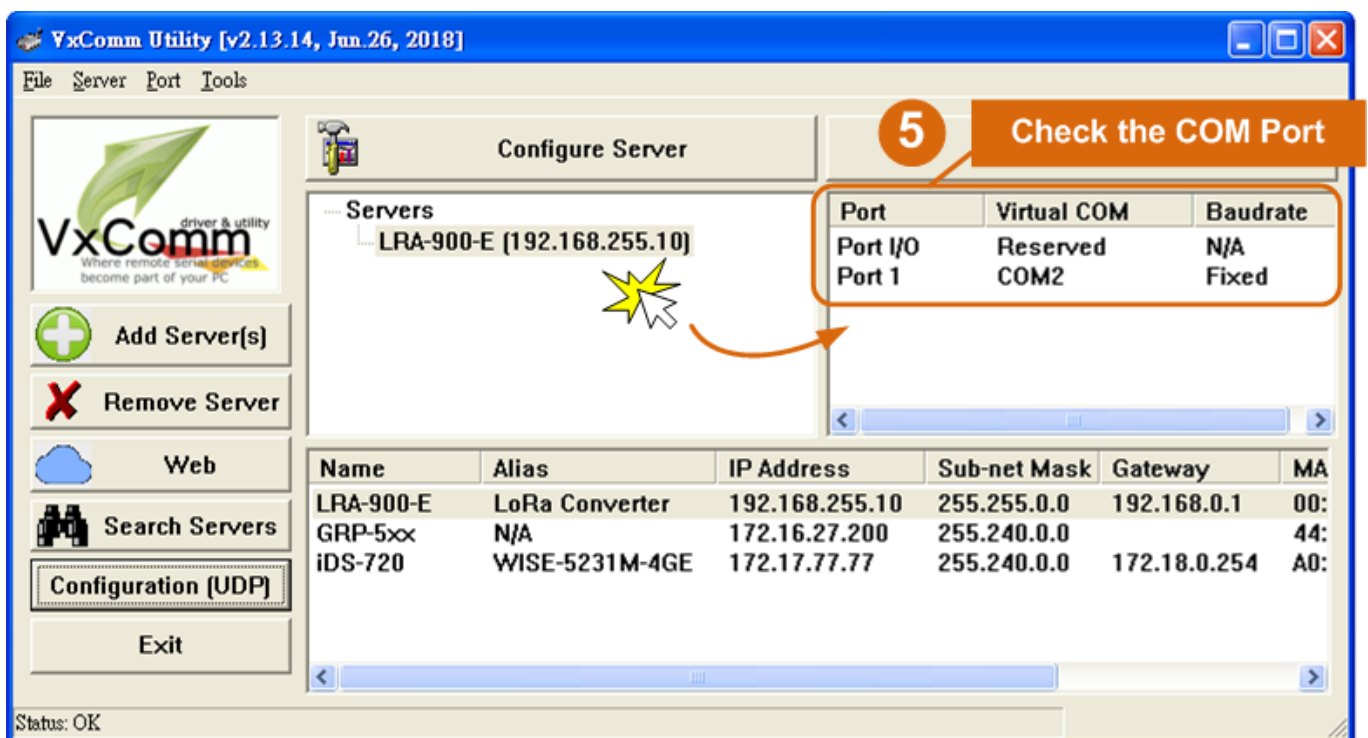
1. Wait 2 seconds and click “**Search Servers**” button again to ensure the LRA-900-E is working well with new configuration.
2. Click the name of LRA-900-E to select it.



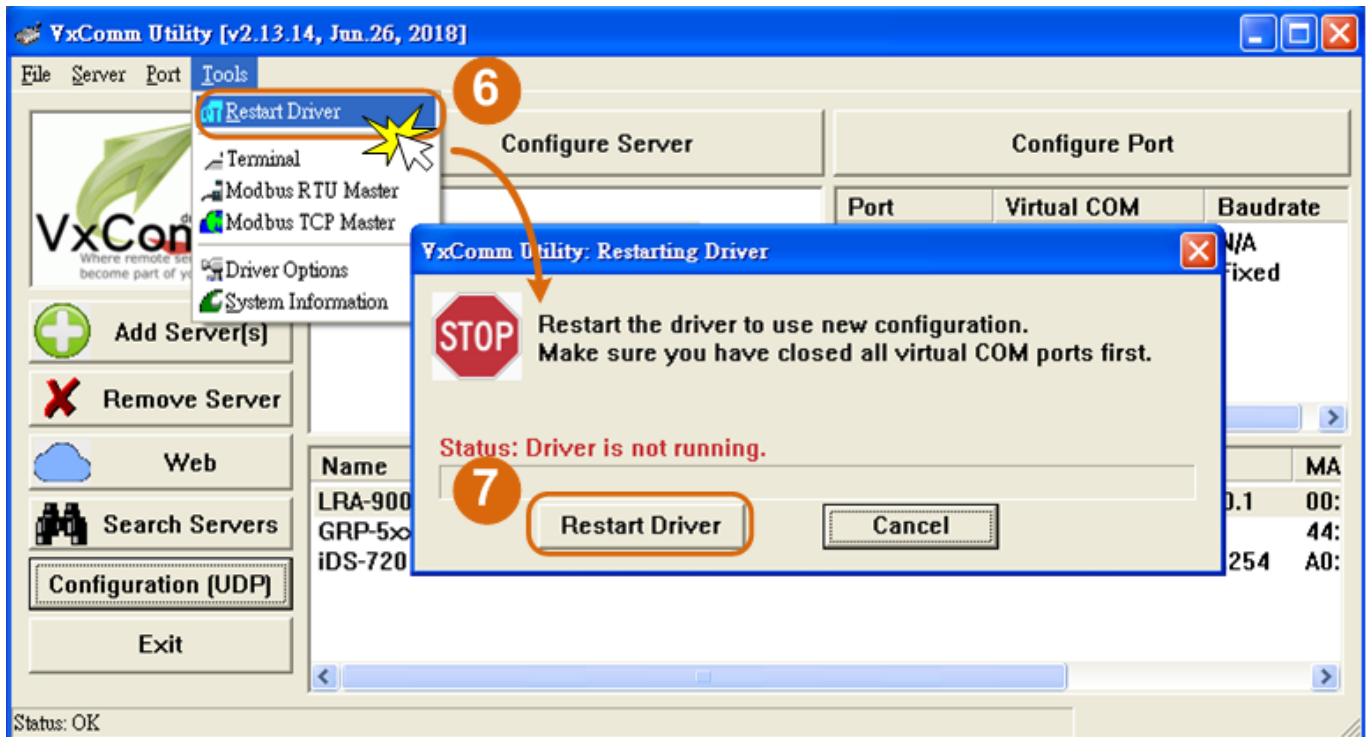
3. Click the “Add Server[s]” button.
4. Assign a COM Port number and click “OK” to save your settings.



5. Click on LRA-900-E name and check the virtual COM Port mappings on the PC.



- Click the “Restart Driver” item in the “Tools” menu to display the “VxComm Utility: Restarting Driver” dialog box.
- Click the “Restart Driver” button.



Note that if you intend to use Internet Explorer, ensure that the cache function is disabled in order to prevent browser access errors, please disable your Internet Explorer cache as follow: **(If you are not using IE browser, please skip this step.)**

Step 1: Click “Tools” >> “Internet Options...” in the menu items.

Step 2: Click “General” tab and click the “Settings...” button in Temporary Internet file frame.

Step 3: Click “Every visit to the page” and click the “OK” in Settings box and Internet Options box.