

IR-712A

Quick Start

JUNE 2017, Version 1.3

Congratulations!

Thanks for purchasing the IR-712A - Universal IR Learning Remote Module. This Quick Start Guide will provide related information which needed to get started with the IR-712A module. Please also consult the user manual for detailed information on the setup and usage of the IR-712A module.

What's In the Box!

In addition to this guide, the package includes the following items:

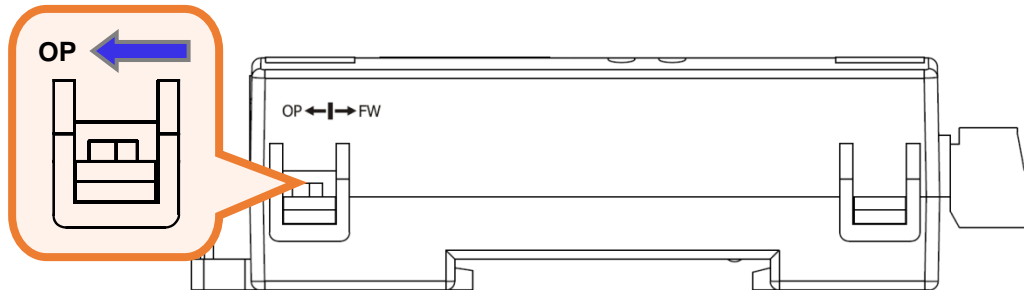
Type \ Item	 IR-712A	 CD	 CA-IR-SH2251	 CA-IR-SH2251-5	 CA-0910	 Screw-driver
IR-712A	X1	X1	X2	--	X1	X1
IR-712A-5	X1	X1	--	X2	X1	X1

Technical Support

- **IR-712A User Manual**
<http://ftp.icpdas.com.tw/pub/cd/usbcd/napdos/ir/ir-712a/manual/>
- **IR-712A Website**
<http://m2m.icpdas.com/IR-712A.html>
- **ICP DAS Website**
<http://www.icpdas.com/>

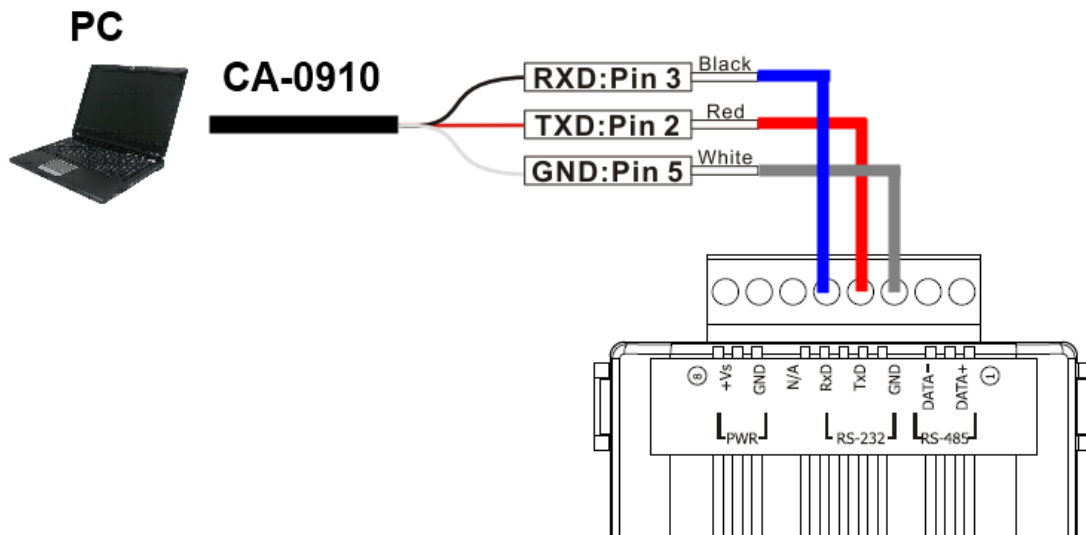
1 Check operation mode of the IR-712A

Push DIP switch to the position of normal operation mode (OP).



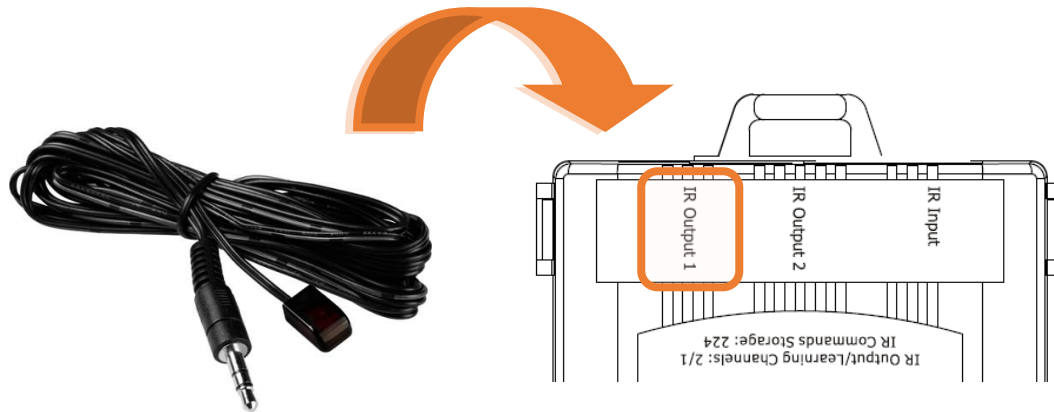
2 Serial wire connection between IR-712A and PC

Use the RS-232 cable (CA-0910) to establish the wire connection between IR-712A and PC as shown in the following figure. The DB9 (9-pin) connector of CA-0910 is for PC COM port.



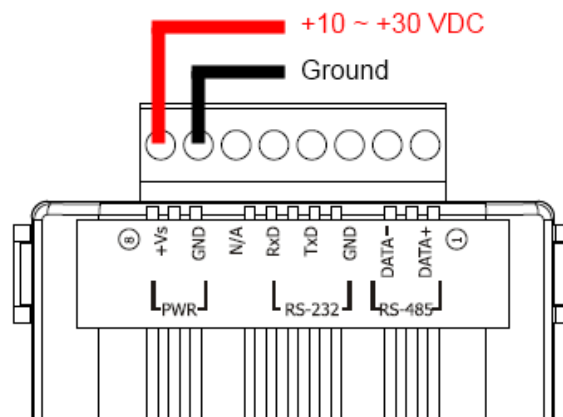
3 Plug in an IR Emitter Cable

Plug the IR emitter cable CA-IR-SH2251 into the 3.5 mm jack of the IR Output 1.



4 Power Wire Connection

Connect the power supply cable (+10 ~ +30 VDC) to the power connector.



5 Install IR Utility

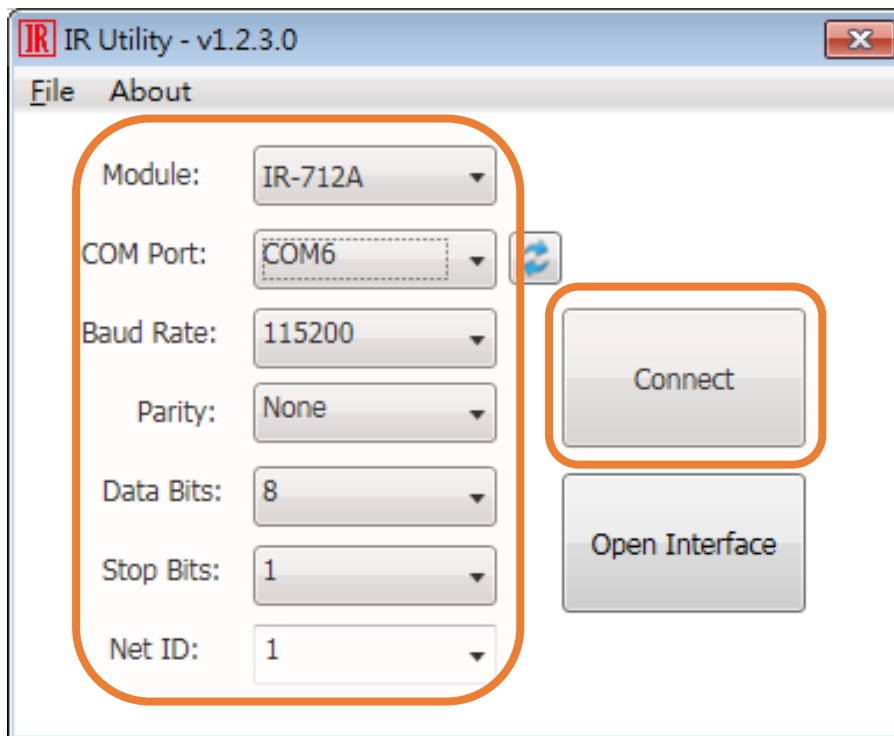
Please get the installation file of the IR Utility(IR_Util_Setup_v#_#_#_#.zip) from the accompanied CD or Web. After installation, launch the IR utility.

CD: \napdos\ir\ir_utility\

Web: ftp://ftp.icpdas.com/pub/cd/usbcd/napdos/ir/ir_utility/

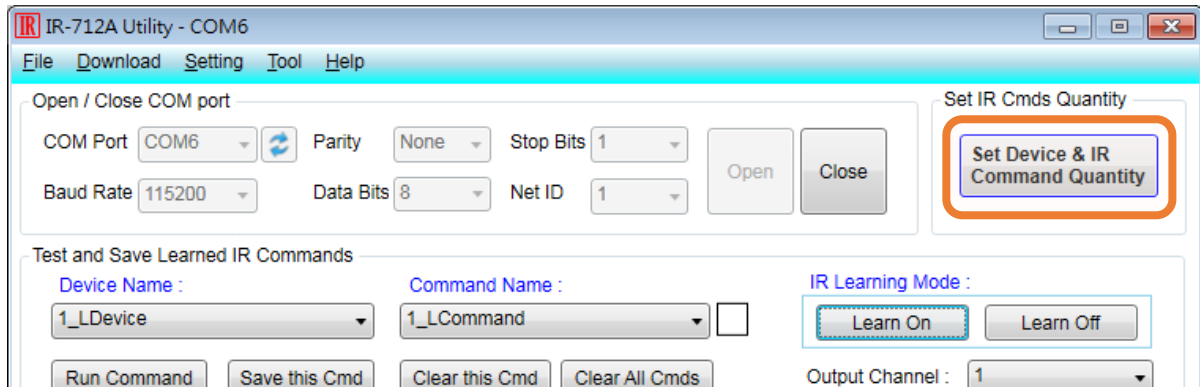
6 Serial Communication to the IR-712A

Select “IR-712A” in the Module combobox. Select the default communication settings: Baud rate = 115200 bps, Parity = None, Data bits = 8, Stop bits = 1, and Modbus Net ID = 1. Then, click “Connect” button to connect to the IR-712A and open the main window of the IR-712 utility.



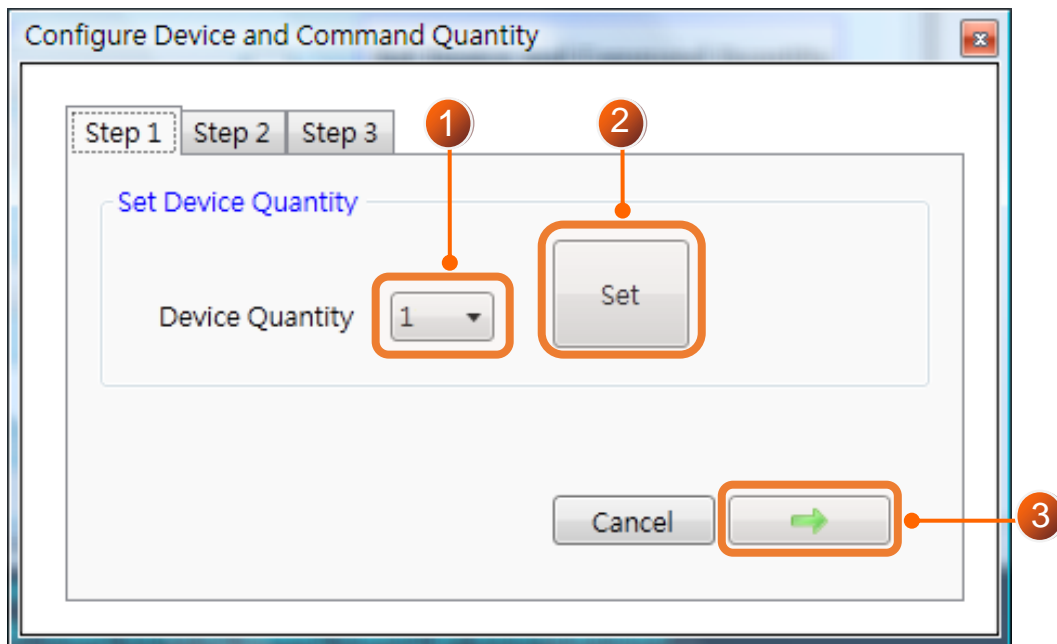
7 Set Device and IR Command Quantity

Please click the “Set Device & IR Command Quantity” button to open the setup window. Three steps to be set:



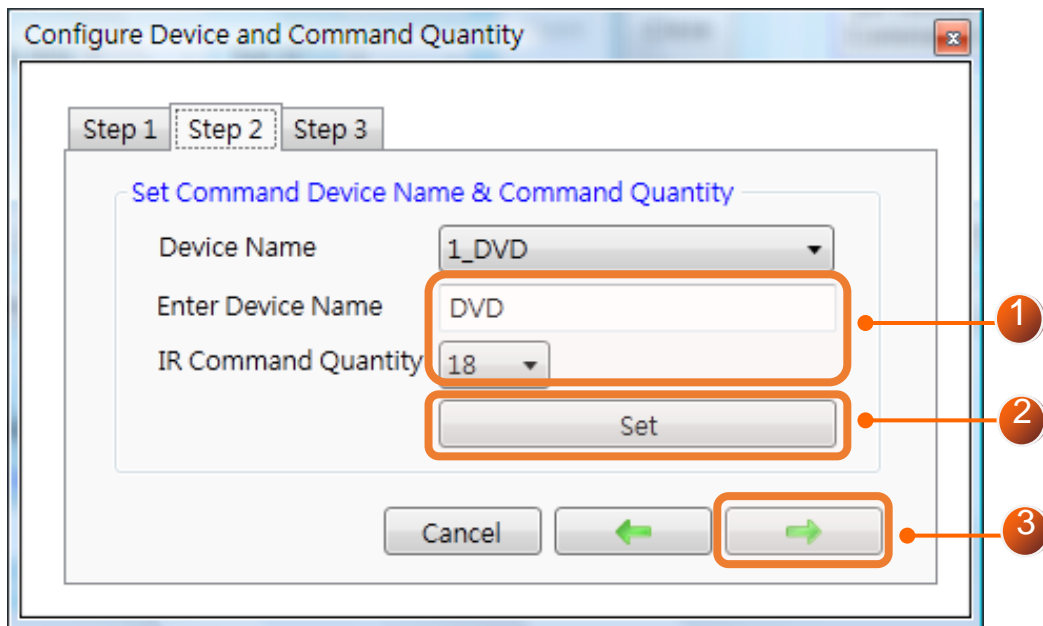
Step 1: Set device quantity.

- (1) Set the Device Quantity to be 1.
- (2) Press the “Set” button.
- (3) Press the Next (right arrow) button.

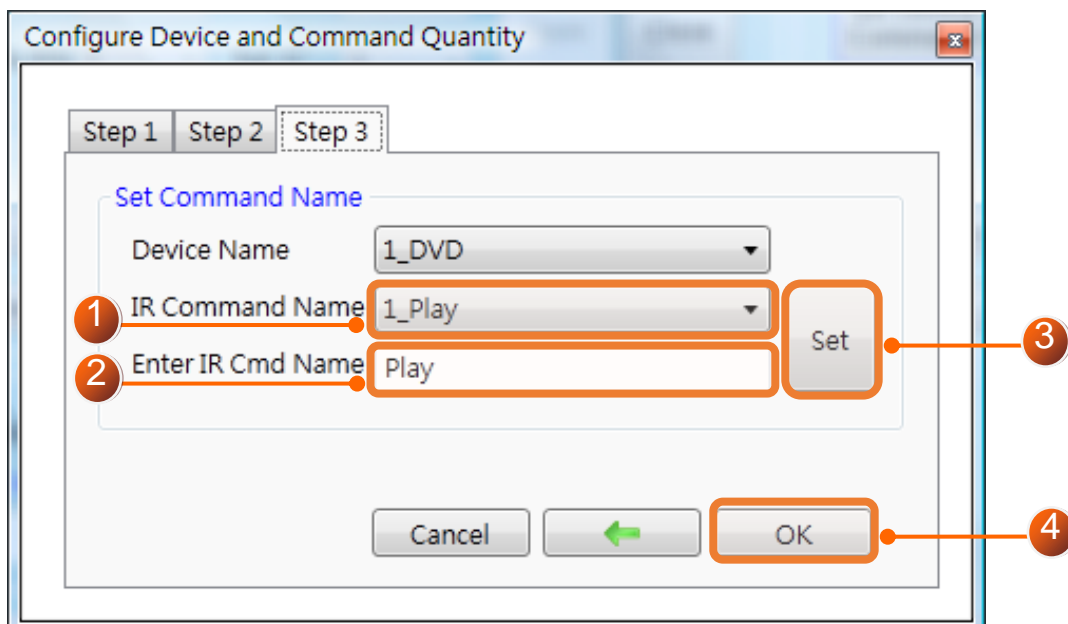


☞ **Step 2: Configure the IR device names and its IR command quantity.**

- (1) Enter Device Name and IR Command Quantity.
- (2) Press the “Set” button.
- (3) Press the Next (right arrow) button.



☞ **Step 3: Set each IR command name. The prefix number (e.g. 1_Play) is the number of an IR command stored in the IR-712A. Click OK button to go back to main window of the IR-712A utility.**



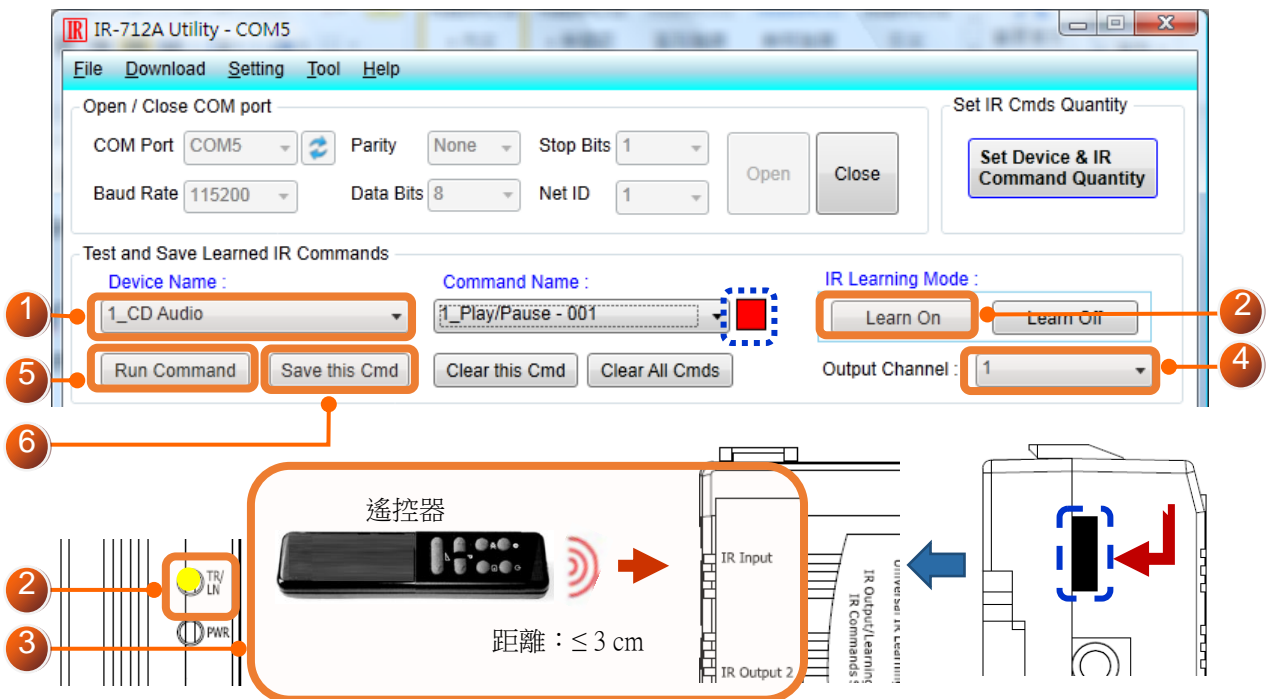
8 Learn IR Commands

In the section “Test and Save Learned IR Commands” of the IR-712A utility:

- (1) Select the item in “Device Name” and “Command Name” combobox.
- (2) Click “Learn On” button to enable IR learning mode (TR/LN LED is ON).
- (3) Aim the emitter head of the remote control (RC) to the “IR Input” hole on IR-712A (distance less than 3 cm) and press the remote control button which is to be learned in a short time. After IR learning is finished, the TR/LN LED is OFF.
- (4) Select IR Output 1 in the output channel combobox.
- (5) Aim the IR emitter, which is plugged in IR Output 1 jack, to the IR receiver of the controlled device. Click “Run Command” button to check the effectiveness of the IR learning command. Repeat (2) and (3) if no action on the device.
- (6) Click “Save this Cmd” button.
- (7) Repeat the above (1)~(6) to finish IR learning.

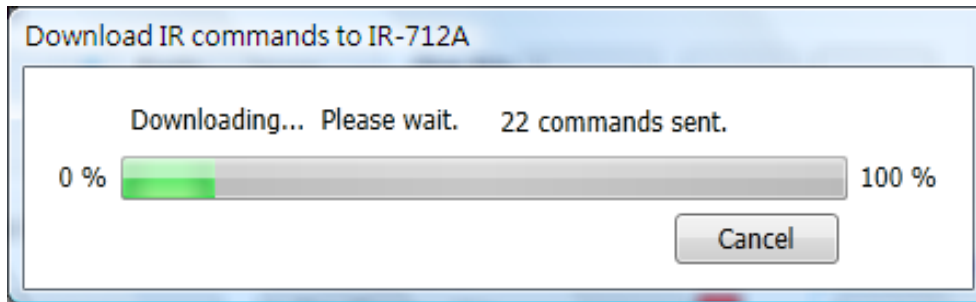
Besides, the color rectangle (marked a blue dotted frame) means:

- **Red**: Learning data is saved in the item of “Command Name”.
- **Yellow**: Get learning data form IR-712A. The data is buffered and lost when selecting other item of “Command Name”.
- **White**: No learning data saved in the current item of “Command Name”.



9 Download IR Commands to the IR-712A

After IR learning finishes, click Menu [Download]-> [Download IR Commands to IR-712A] to download the IR commands to the IR-712A.



10 Test IR Commands in IR-712A

Go to the “Test IR Commands in IR-712A” section:

- (1) Select IR Command No.
- (2) Select Output Channel to 1. Aim the IR emitter head to the appliance.
- (3) Press “Transmit from IR-712A” button. The appliance reacts means success.

