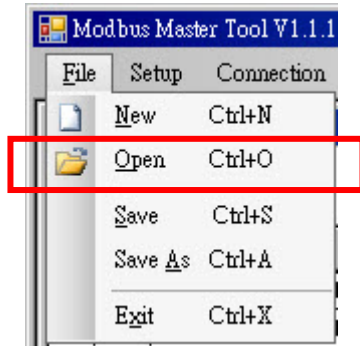
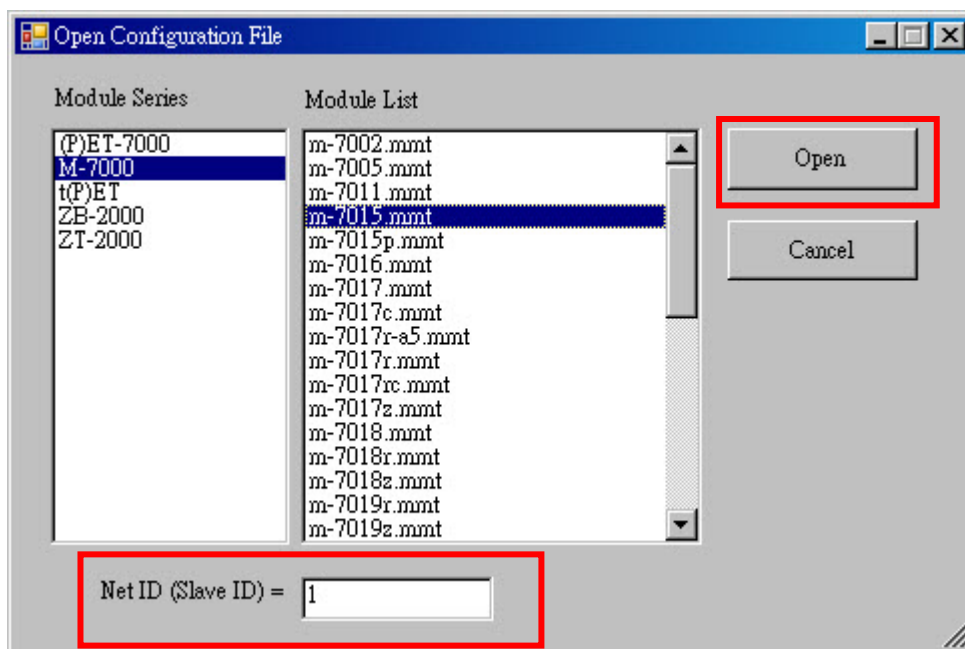


Quick Start for Modbus Master Tool (PC)

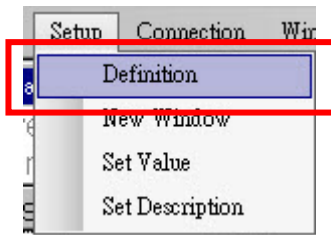
Step1. Select [Open] from [File] menu to open a configuration file from the module list. The module list is deposited in the folder named "Configuration File".



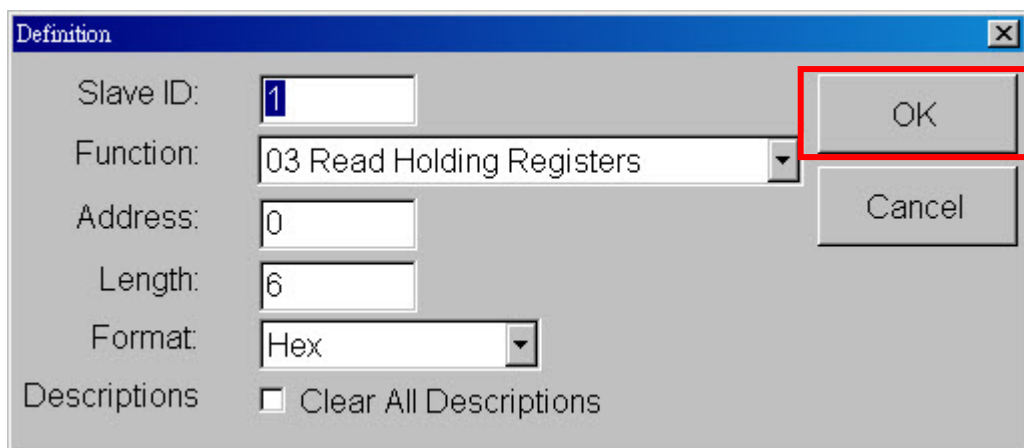
Step2. Select Module Series and Module List, and enter the slave ID (default is 1), and then click [Open]. If there is no module that want to be opened, go to step1 and select [New] to create a new configuration file.



Step3. If the definitions have to be set, select [Definition] from [Setup] menu to set parameter and then click [OK]

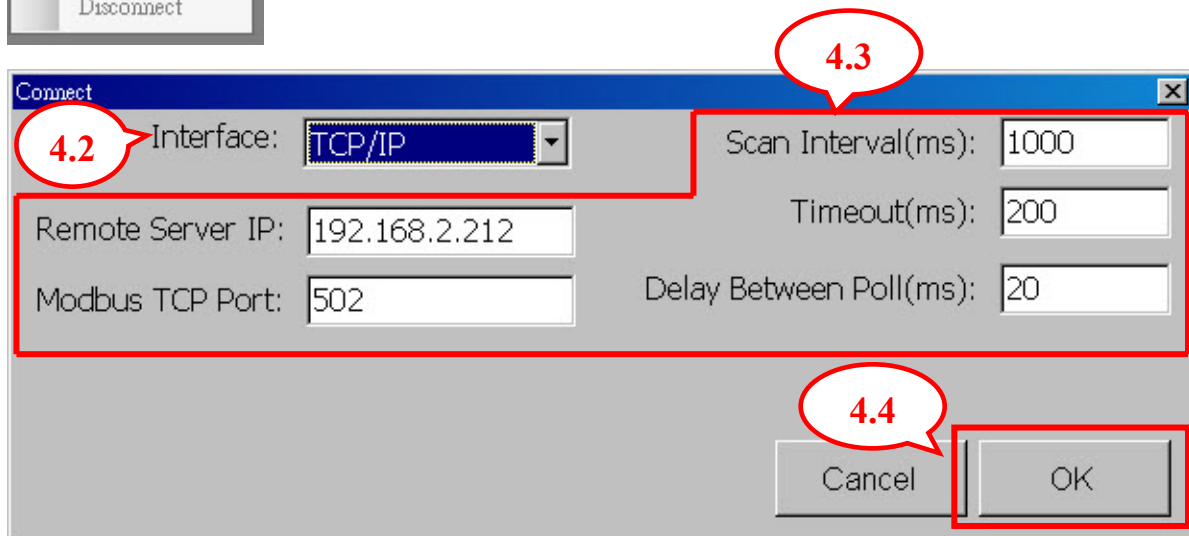
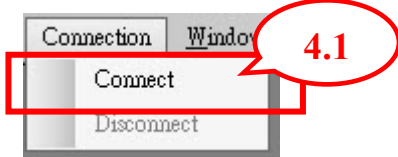


Note: If the [Clear All Descriptions] is checked, all the descriptions will be erased for the window.



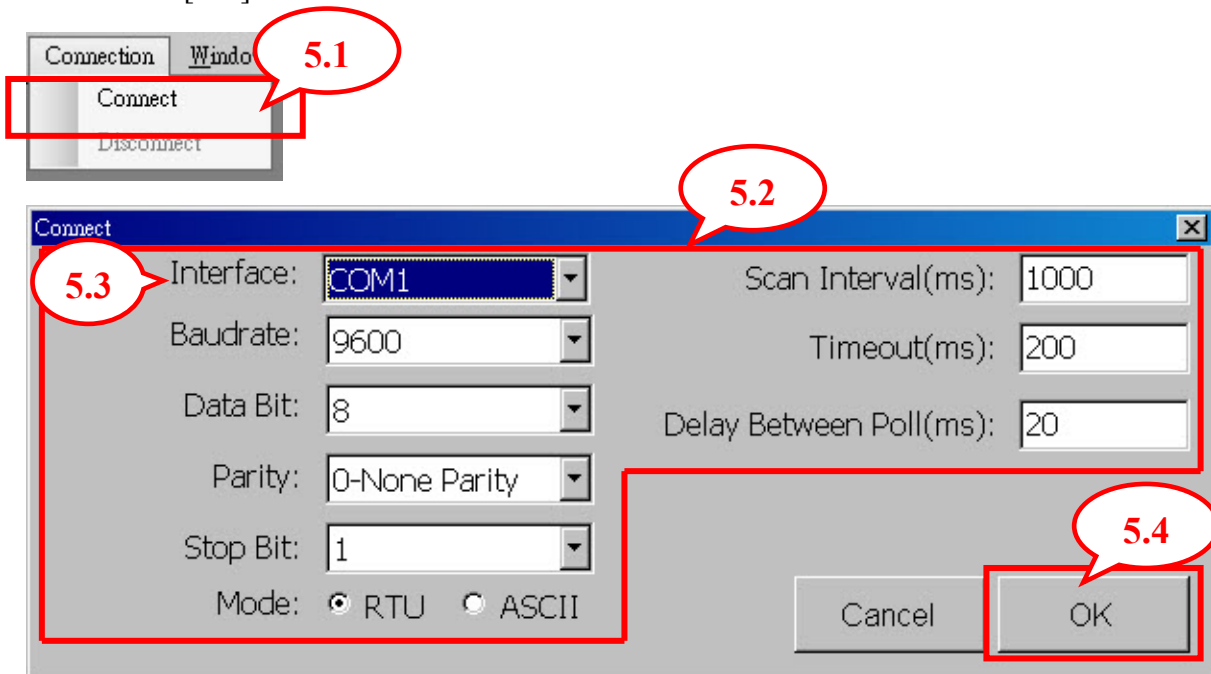
Step4. Set TCP connection.

- 4.1 Select [Connect] from [Connection] menu.
- 4.2 Select [TCP/IP] from [Interface] drop-down list to connect.
- 4.3 Set the other parameters of connection.
- 4.4 Click [OK] to start connection.



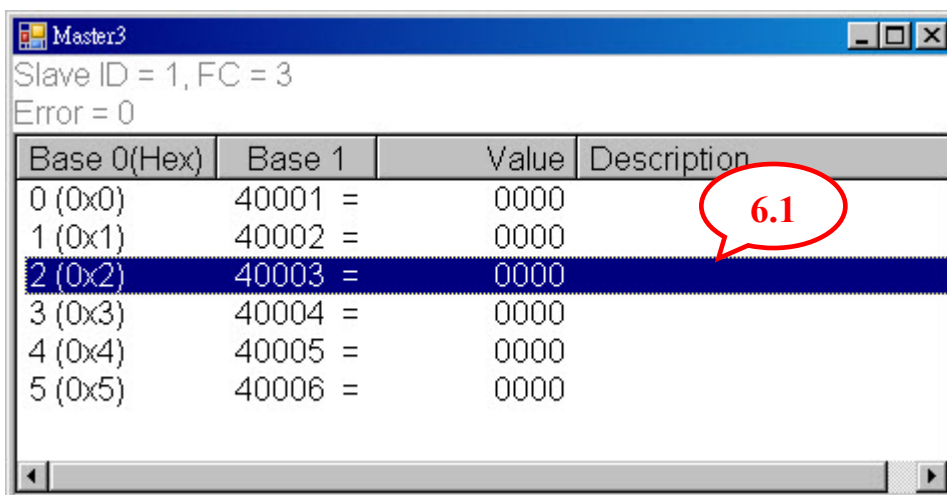
Step5. Set Serial connection.

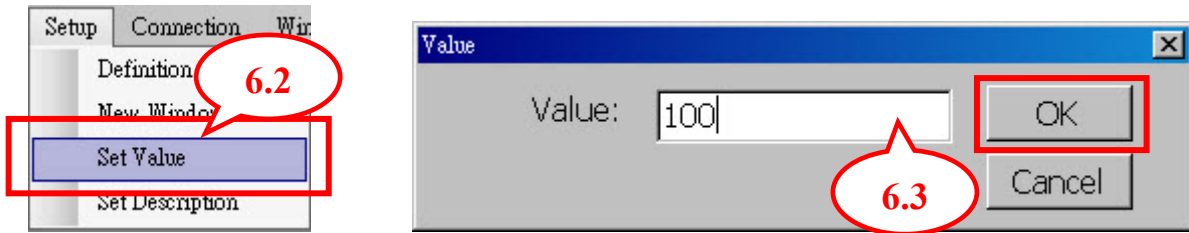
- 5.1 Select [Connect] from [Connection] menu.
- 5.2 Select [COM] from [Interface] drop-down list to connect.
- 5.3 Set the parameters of connection.
- 5.4 Click [OK] to start connection.



Step6. Set [Holding Register] and [Coil Status] value.

- 6.1 Select the address
- 6.2 Click [Set Value] from [Setup] menu.
- 6.3 Enter the value and then click [OK].





Step7. Save configuration settings to the file or save as another configuration file.

7.1 Select [Save] from [File] menu to save the configuration.

7.2 Select [Save As] from [File] menu to save the configuration to another file.

