

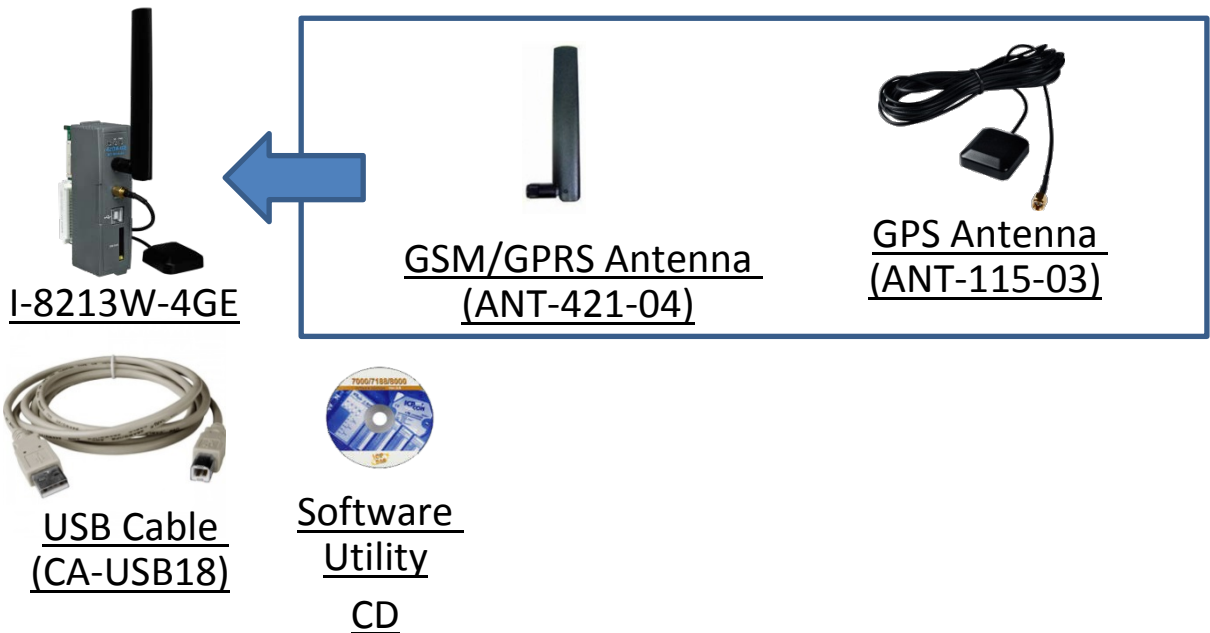


I-8213W-4G Quick Start

Version 1.0 March 2017

Product Content

In addition to this Quick Start, this product also includes these accessories:



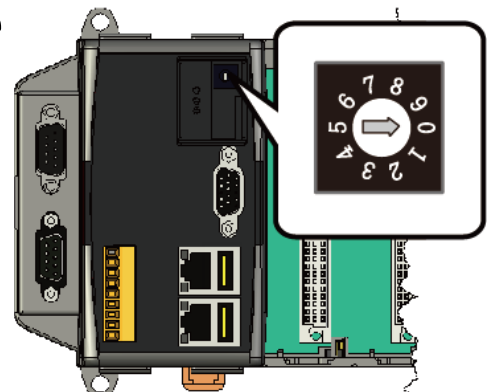
Technical Support

I-8213W-4G User Manual and USB Driver

http://ftp.icpdas.com/pub/cd/usbcd/napdos/gprs_gsm_modem/i-8213w-4g

1 Configuring the boot mode

Before starting at the first time, be sure that the switch is placed in the "0" position.



2 Install SIM Card and Antenna

Step1: Press the button to pull out the SIM card

Step 2: Place the SIM card into the slot

Step 3: Connect the GSM / GPRS antenna

Step 4: Connect the GPS antenna

Step 5: Connect the USB cable to the PAC



3 Install on XP-8000

Step 1: Install the module hardware on the XP-8000

Step 2: Switch to "2", Close EWF

Step 3: Reboot XP-8000

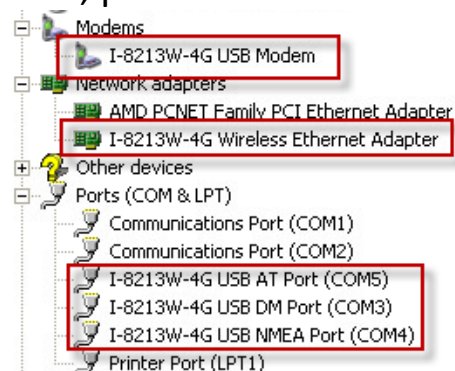
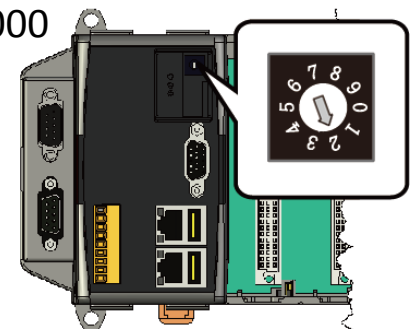
Step 4: After Reboot, Install USB Driver(I-8213W-4G USB driver

V1.00.exe)

Step 5: Finish the USB Driver Installation, please check the USB

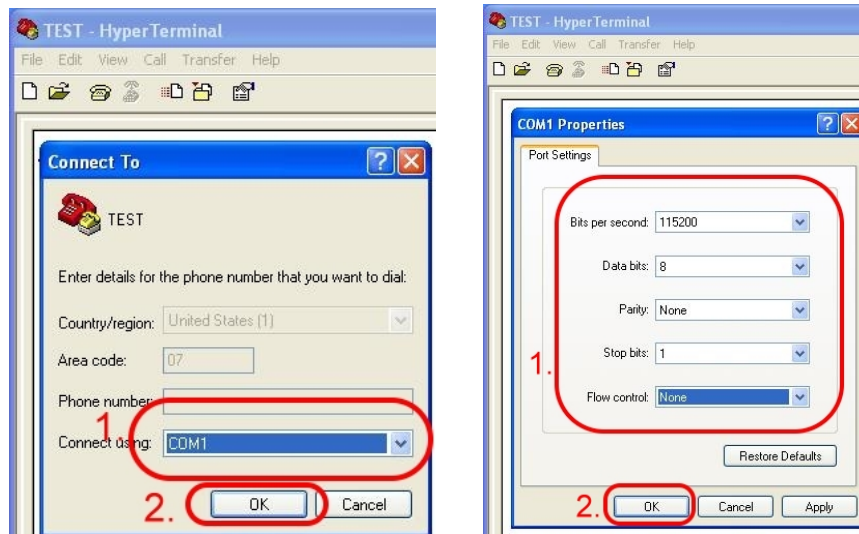
Com Port

Step 6: Switch to "0", Open EWF

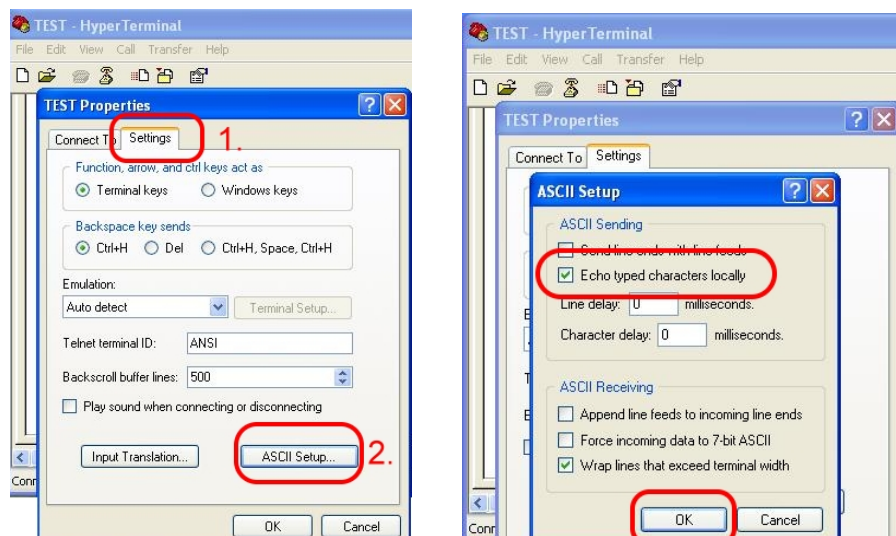


4 Quick Test

Step 1: Start → All Programs → Accessories → Communications → Hyper Terminal → Input new connection name → Click “OK” → Select USB Interface “I-8213W-4G AT command Port” → Click “OK”



Step 2: File → Properties → Settings → Click “ASCII Setup...” → Select “Echo typed character locally” → “OK”



Step 3: Input “AT” and press “Enter”, then you will receive “AT OK”

5 Technical Support

If you have any questions about I-8213W-4G, please contact us

Email: Service@icpdas.com

I-8213W-4G Product Website:

http://m2m.icpdas.com/i-8213w-4g_TC.html