



Industrial Quad-band GPRS/GSM Modem

GTM-201-USB

Quick Start Manual

Package Checklist

The package includes the following items:

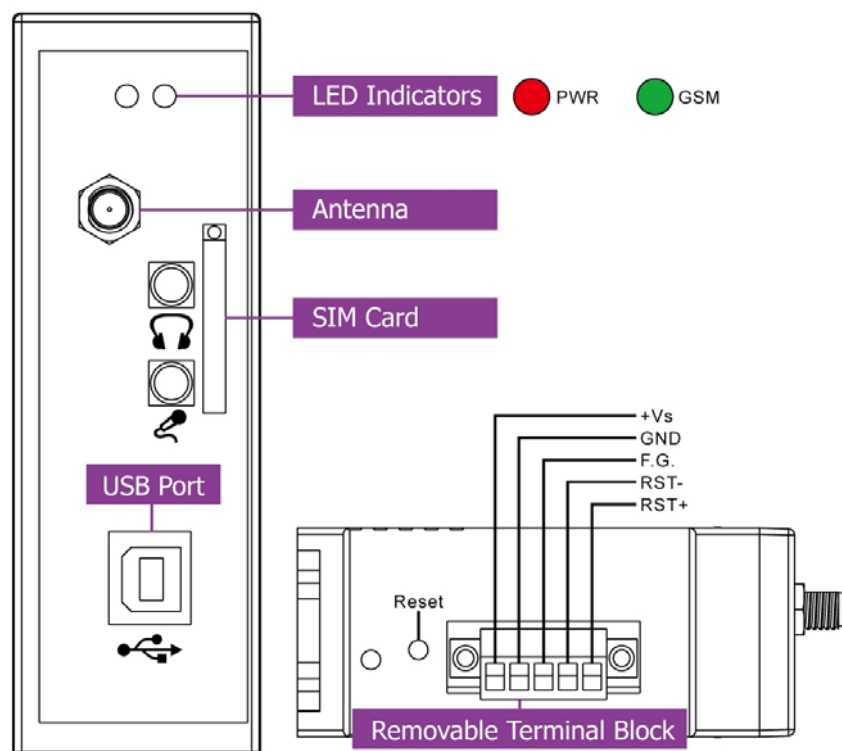
- One GTM-201-USB hardware module
- One Quick Start Manual (this manual)
- One companion CD
- One USB Type A to Type B connector cable (CA-USB18)
- One GPRS antenna

Related Documents and Software Utilities

Documents

- User manual: GTM-201_User_Manual
- Quick Start Manual: GTM-201-USB_QuickStart_Manual
- CD: \napdos\GPRS_GSM_Modem\GTM-201_Modem\Manual
- http://ftp.icpdas.com/pub/cd/usbcd/napdos/gprs_gsm_modem/gtm-201_modem/manual/

➤ View of the GTM-201-USB Panel

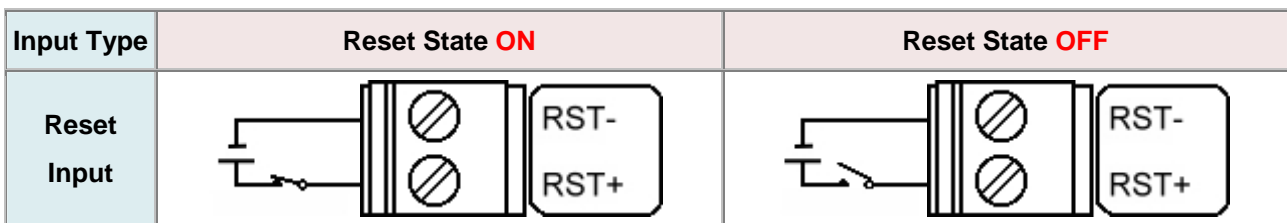


Pin Assignments

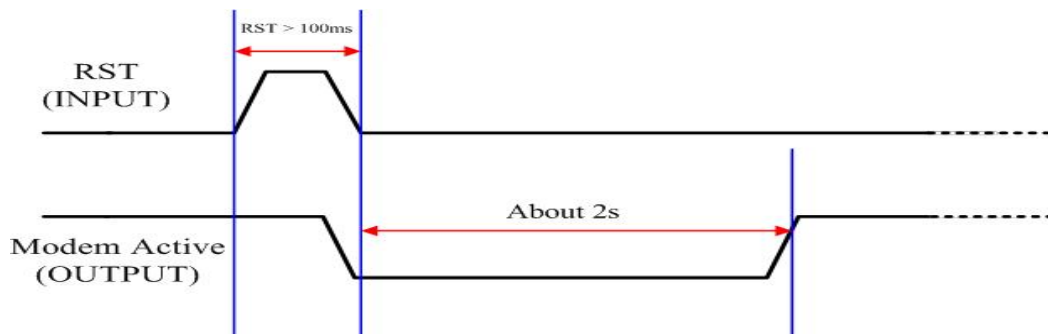


| | |
|---|--------|
| RESET | RST+ |
| | RST- |
| Frame Ground | F.G. |
| Power Input: +10 ~ 30V _{DC} | DC.GND |
| | DC.+VS |

➤ Reset Wire Connection

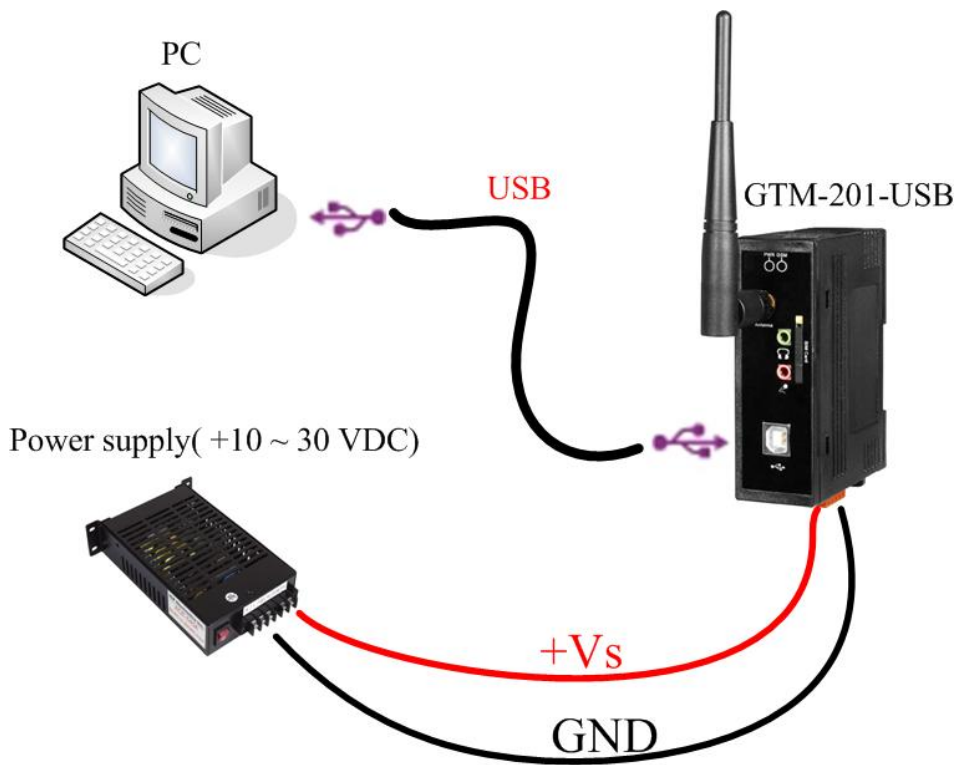


| | |
|--------------------------|--|
| Reset Input | |
| ON Voltage Level | +3.5 V _{DC} ~ +30 V _{DC} |
| OFF Voltage Level | +1 V _{DC} max. |



Timing of restart Modem

➤ **Connect the GTM-201-USB to power and PC**



➤ **SIM card and Antenna Installation**



➤ USB Driver Installation(XP)

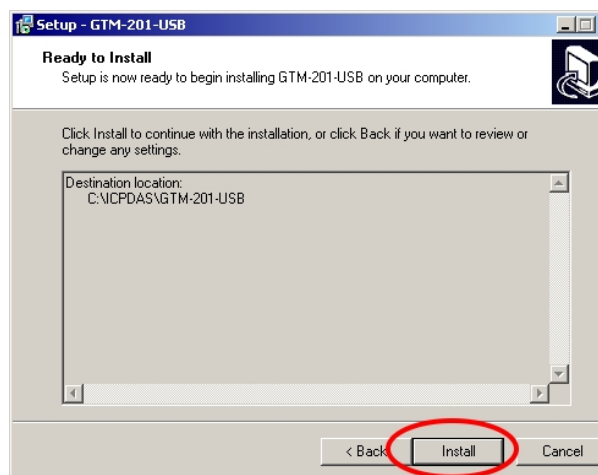
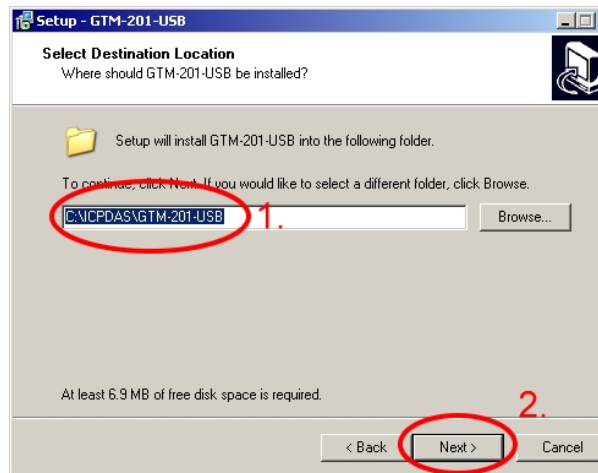
Step1. Connect the GTM-201-USB and XPAC hardware with the USB cable , then power on.

Step2. If pop up a new window that “Found New Hardware Wizard”, please select “Cancel”

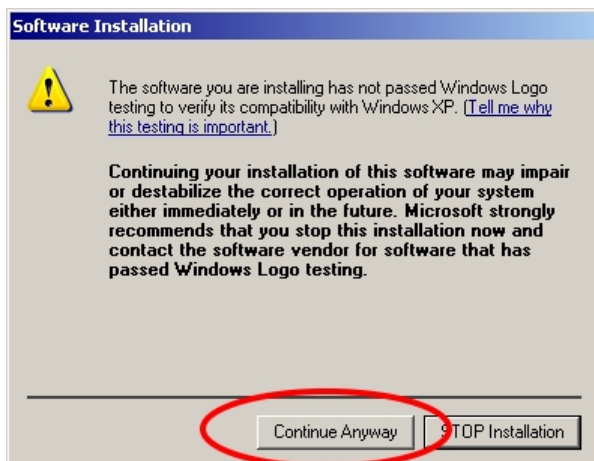


Step3. Double-click GTM-201-USB driver that “GTM-201-USB_v1.00.exe”.

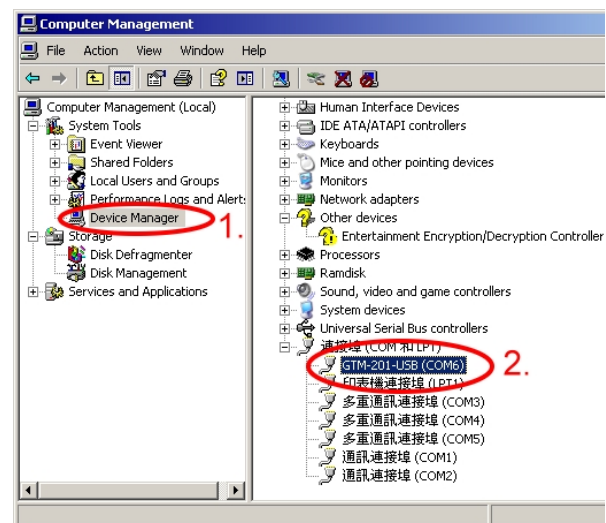
Step4. Select “Next” → Select install folder → Select “Next”



Step5. If the installation process has popped up new window that “Software Installation”, please select “Continue Anyway”



Step6. Please open “Device Manager” to check com port (GTM-201-USB (COMx)).



➤ Quick Test (Hyper Terminal)

Step1. Start → All Programs → Accessories → Communications → Hyper Terminal → Input new connection name → Click “OK” → Select your PC serial port → Click “OK”



Step2. Please refer to the following settings

| | |
|-----------------|--------|
| Bits per second | 115200 |
| Data bits | 8 |
| Parity | None |
| Stop bits | 1 |
| Flow control | None |

Step3. File → Properties → Settings → Click “ASCII Setup...” → Select “Echo typed character locally” → OK

Step4. Input “AT” and press “Enter”, then you will receive “AT OK”

➤ Create a new modem connection on PC

Step1. Control Panel → Double-click “Phone and Modem Options” → Modem → Click “Add”

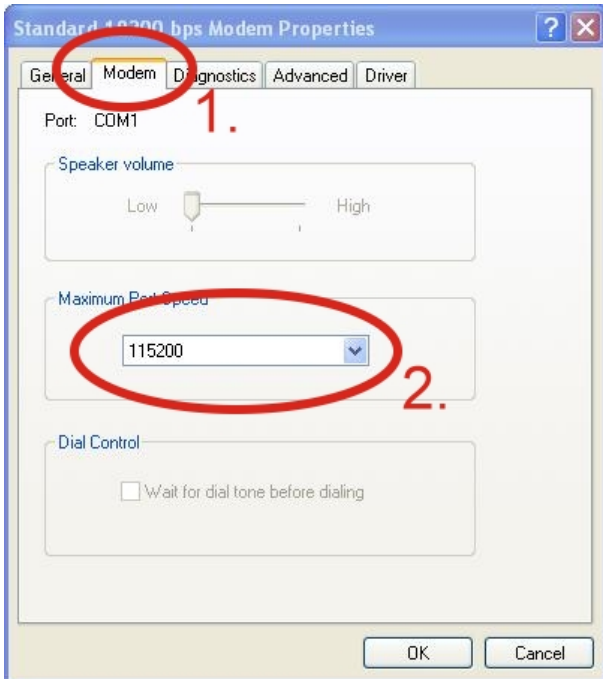
Step2. Select “Standard Modem Types” → Select “Standard 19200 bps Modem” → Click “Next”

Step3. Select your COM Port to connect the modem → Click “Next” → Click “Finish”



Step4. Control Panel → Double-click “Phone and Modem Options” → Modem → Select “Standard 19200 bps Modem” → Click “Properties”

Step5. Control Panel → Double-click “Phone and Modem Options” → Modem → Select “Standard 19200 bps Modem” → Click “Properties” → Modem → Maximum Port Speed → 115200



Step6. Advanced → Extra initialization commands:

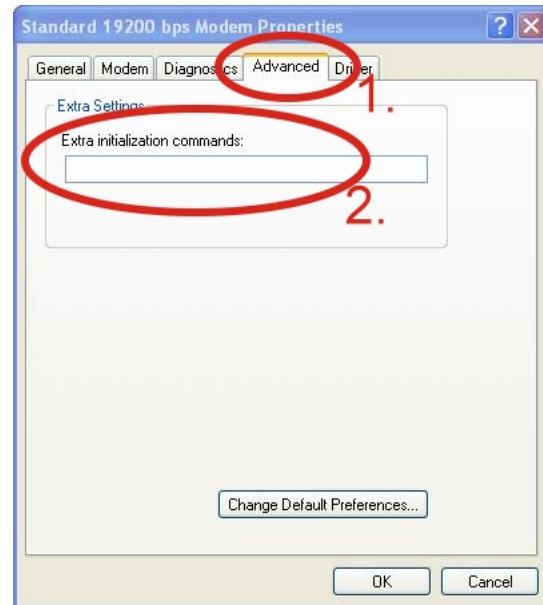
Note: GPRS’s APN must be provided from your Telecom. CO., LTD.

For example in Taiwan:

AT+CGDCONT=1,“IP”,“INTERNET”

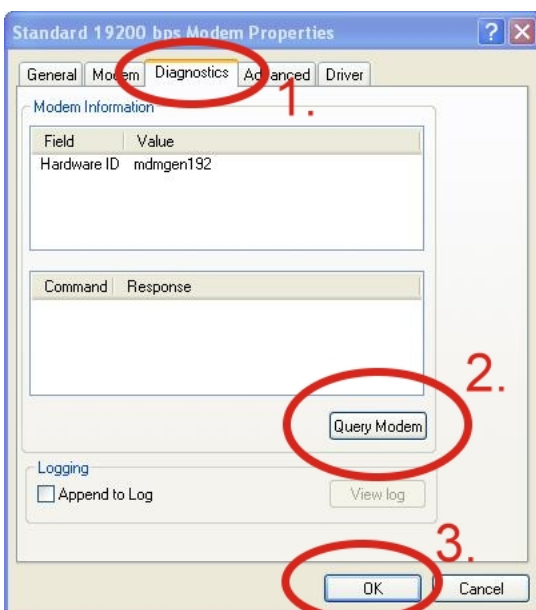
For example in China:

AT+CGDCONT=1,“IP”,“CMNET”

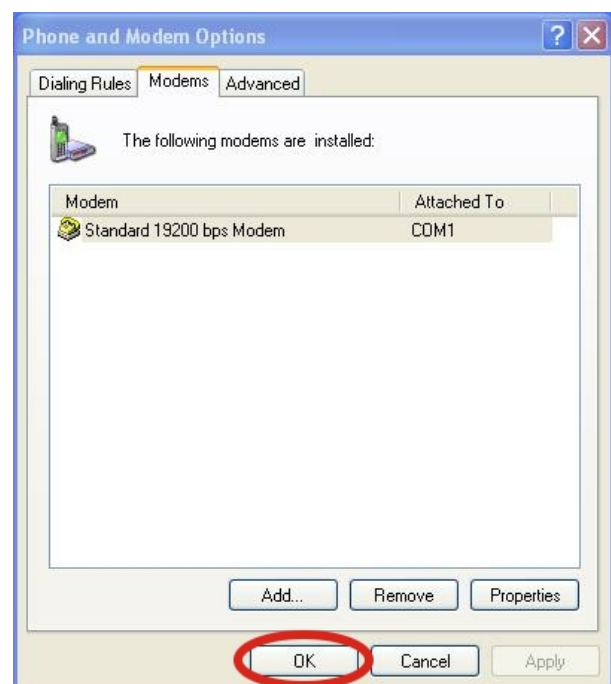


Step7. Diagnostics → Query Modem → Click “OK”

Note: If user queries modem that gets a Error, please try again.

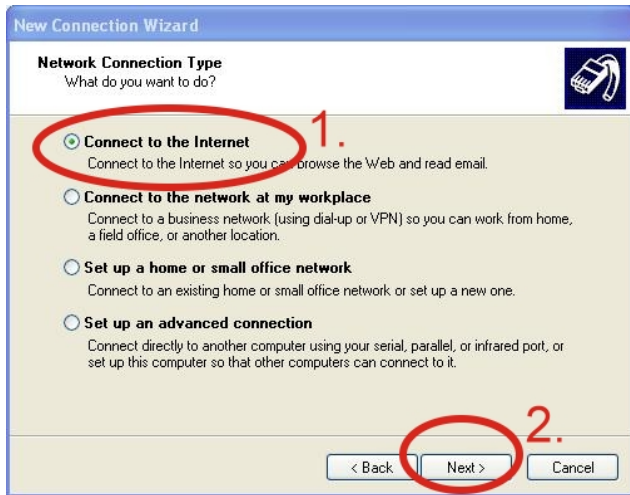


Step8. Click “OK”

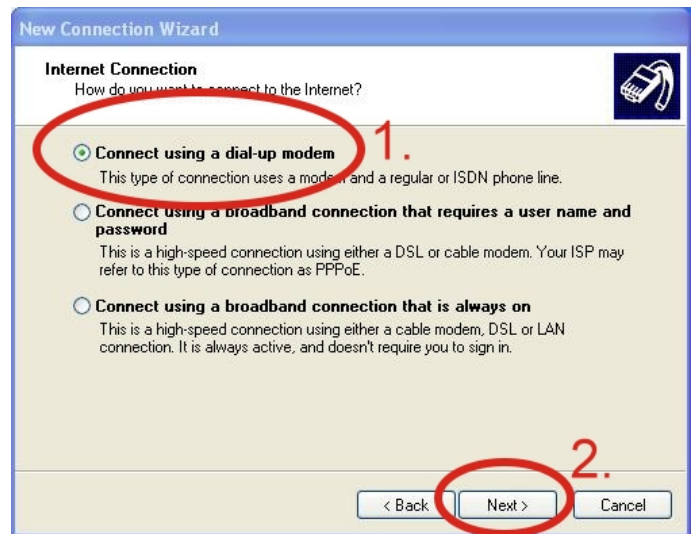


➤ **Create a new dial-up on a PC**

Step1. Control Panel → Network Connections → Click “Create a new connection” → Click “Next” → Select “Connect to the Internet” → Click “Next”



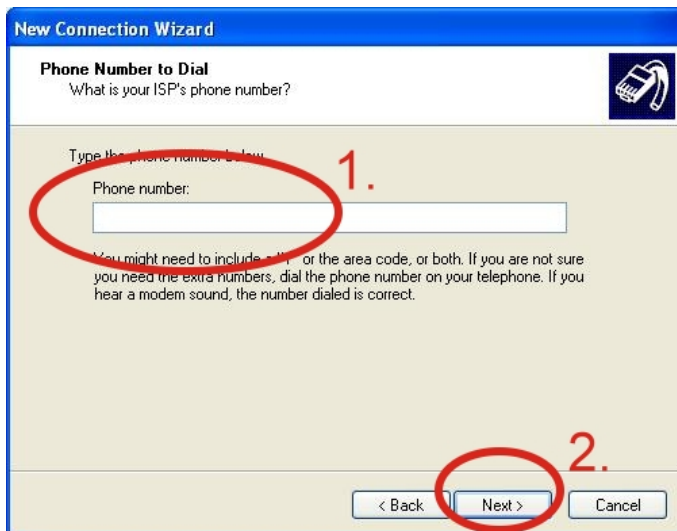
Step2. Select “Connect using a dial-up modem” → Click “Next”



Step3. Your GPRS's name → Click “Next” → Phone Number: → Click “Next”

Note: Phone Number must be provided from your Telecom. CO., LTD.

For example in Taiwan: *99***1#

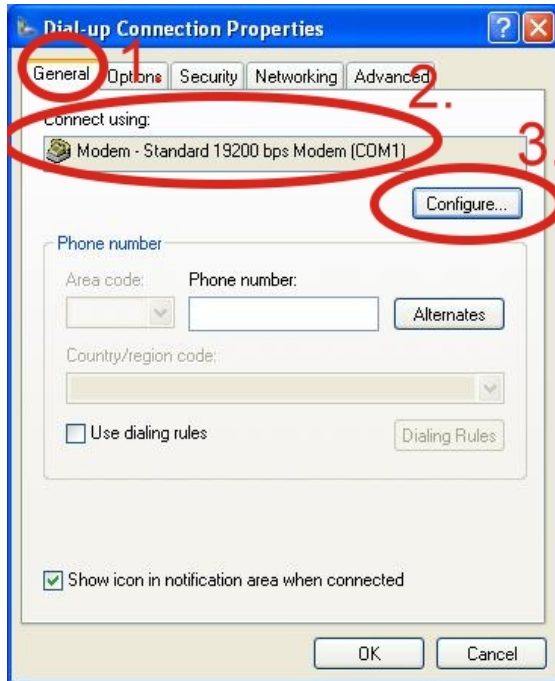


Step4. GPRS's User name and GPRS's Password → Click “Next” → Click “Finish”

Note: GPRS's User name and GPRS's Password must be provided from your Telecom. CO., LTD.



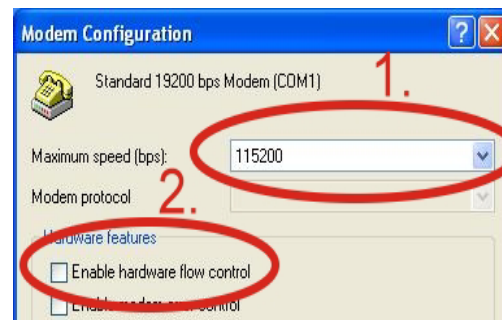
Step5. Contral Panel →
 Network Connections →
 Click “Your GPRS’s name” → File
 → Properties → General →
 Select ”Standard 19200 bps Modem”
 → Click “Configure”



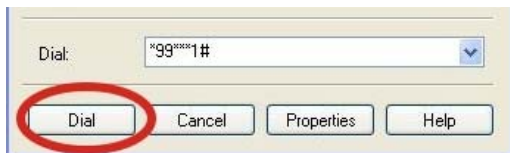
Step6. Maximum speed(bps) →
 Select ”115200” →
 Enable hardware flow control (Note)
 → Click “OK”

Note :

| | |
|------------------------------------|--|
| GTM-201-RS232 “RTS/CTS” mode | Please select “Enable hardware flow control” |
| GTM-201-USB | Please don't select “Enable hardware flow control” |



Step7. Contral Panel → Network
 Connections → Double-Click “Your
 GPRS’s name” → Click “Dial”



Step8. If you connect to internet
 successfully, your toolbar have
 new logo



➤ Technical Support

1. ICP DAS Service : service@icpdas.com

2. GTM-201-USB software Website:

[http://www.icpdas.com./products/GSM_GPRS/wireless/
 GTM-201.htm](http://www.icpdas.com./products/GSM_GPRS/wireless/GTM-201.htm)